



# **MINING & CONSTRUCTION PRODUCT GUIDE**



**बी ई एम एल**

**bhel**

NEW FRONTIERS. NEW DREAMS

[www.bhelindia.in](http://www.bhelindia.in)

# BEML LIMITED

**BEML LIMITED** is a leading manufacturer of mining & construction equipment in Asia serving core sector of economy for the past five decades.

The company has pioneered new technologies and introduced new products in the market. The other two vertical business of BEML are (a) Defence & Aerospace Business and (b) Rail & Metro Business.

BEML Limited offers a comprehensive and diverse range of mining & construction equipment for both opencast and underground mines. BEML produces equipment such as Walking Dragline, Electric Rope Shovels, Hydraulic Excavators, Bulldozers, Wheel Loaders, Wheel Dozers, Dump Trucks, Motor Graders, Pipe Layers, Tyre Handler and Water Sprinklers. Besides, BEML has ventured into underground mining with products such as Side Discharge Loader, Load Haul Dumper, Granby Car, Diesel Mine Cruiser and Battery operated Loco.

Its nationwide network of service centres, parts depots ensures total customer satisfaction. Maintenance and Repair Contract (MARC), Annual Maintenance Contract (AMC), GPCC, as per customer needs ensures Equipment availability.

With the opening up of private sector for mining in a big way BEML is gearing up towards consolidating its leadership position in the mining & construction equipment industry. BEML is making continuous efforts in expanding its global market reach and widening the market network through its dedicated International Business Division (IBD). BEML is focussing to enhance its export business in all the 3 business verticals mainly Mining & Construction, Defence & Aerospace, Rail & Metro, with special focus on Africa, Asean, Middle East, SAARC and other neighbouring Countries.

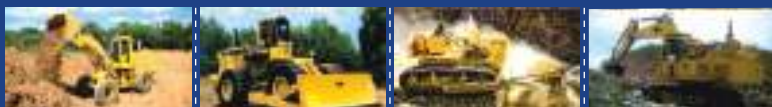
Commensurate with Govt. policy of *"Make in India"*, BEML has indigenously designed and manufactured BH150E (136 Metric Tonne) & BH205E (186 Metric Tonne) Electric Rear Dump Trucks, BE1800E (180 Ton class) Electric Hydraulic Excavator, BE1800D (180 Ton class) Hydraulic Excavator and BD475 (850 HP class) Crawler Dozer.



## CONTENTS

|                                   |    |                                     |    |
|-----------------------------------|----|-------------------------------------|----|
| <b>MINING EQUIPMENT</b>           |    | <b>TYRE HANDLER</b>                 |    |
| <b>REAR DUMPERS</b>               |    | BL14TH                              | 26 |
| BH205E-AC                         | 05 | <b>UNDERGROUND MINING EQUIPMENT</b> |    |
| BH150E                            | 06 | BL10C-SDL                           | 28 |
| BH100                             | 07 | Mine Cruiser                        | 29 |
| BH60M                             | 08 | Battery Operated Mine Locomotive    | 30 |
| Bh35-2                            | 09 | Granby Car                          | 30 |
| <b>CRAWLER &amp; WHEEL DOZERS</b> |    | <b>CONSTRUCTION EQUIPMENT</b>       |    |
| BD475-2                           | 11 | <b>CRAWLER DOZERS</b>               |    |
| BD355                             | 12 | BD85                                | 31 |
| BD155                             | 13 | BD80                                | 32 |
| BD30W-1                           | 14 | BD65-1                              | 33 |
| BD14W                             | 14 | BD50                                | 34 |
| <b>HYDRAULIC EXCAVATORS</b>       |    | <b>HYDRAULIC EXCAVATORS</b>         |    |
| BE1800E                           | 16 | BE300LC                             | 35 |
| BE1800D                           | 17 | BE220G                              | 36 |
| BE1000-1                          | 18 | BE75                                | 37 |
| BE700                             | 19 | <b>WHEEL LOADER</b>                 |    |
| <b>WHEEL LOADER</b>               |    | BL30-1                              | 39 |
| BL40                              | 21 | BL200-1                             | 40 |
| <b>MOTOR GRADER</b>               |    | <b>MOTOR GRADERS</b>                |    |
| BG825                             | 23 | BG405A                              | 41 |
| <b>PIPE LAYERS</b>                |    | BG605A                              | 42 |
| BP100                             | 24 | BG605I                              | 42 |
| BP70                              | 24 | <b>WATER SPRINKLERS</b>             |    |
| BP41                              | 24 | BWS70                               | 25 |
| <b>WATER SPRINKLERS</b>           |    | WS28-2                              | 25 |

Materials and specifications are subject to change without notice, Illustrations may include optional equipment & accessories.



# MINING EQUIPMENT

## REAR DUMP TRUCKS

### SALIENT FEATURES

**Performance:** High Power BEML / Cummins engine, rugged transmission with automatic lock-up clutch and heavy-duty planetary axle provide optimum combination of speed and tractive efforts. BEML Rear Dump Trucks are provided with ABS (Anti lock Braking System) and ASR (Automatic Spin Regulator system). For 60 UST and 100 UST Rear Dump Truck it is standard. For 35 UST Rear Dump Truck is fitted with traction sensing differential as a standard feature. BEML Rear Dump Trucks are fitted with In-Board Parking brake part of Rear Axle from 60 UST to 100 UST. BEML launched 150 UST and 205 UST Rear Dump Trucks with Electrical drive system which are designed and developed with in-house R&D efforts.

**Productivity:** High power to weight ratio gives ample reserve power for faster cycle time.

**Reliability:** Adjustment-free wet multiple disc brakes for rear and dry calliper disc brakes for front axle offer longer life.

**Serviceability:** Low maintainability and repair-ability index, evaluated through SAE J 817A, compared to any other dumper in its class.

**Manoeuvrability:** Orbitrol Power steering with a good combination of steering, steering angle, turning circle, tread and wheel base provide high degree of manoeuvrability.

**Control:** Ideally located spacious cabin with ergonomically designed operator seat and control offer maximum comfort and operational ease.

**Safety:** Features include integral ROPS/FOPS cabin, emergency steering, dual brake system to meet relevant safety standards.

### STANDARD ACCESSORIES

**General:** Integral ROPS/FOPS cabin, electronic dashboard system, vandalism protection cap (fuel tank), head and tail lights, horn, turn signal lights, alternator, electric starter, key switch, wiper motor, engine shut-off switch, manual emergency steering, wind shield washer, rear view mirror, portable fire extinguisher, tool kit, parking brake valve, tiltable steering wheel and column, central warning lamps & buzzer, battery cut-off-switch, dump brakes, backup alarm, catwalk, mud flaps, body lock rope, and ejectors, cabin floor mat, safety seat belt, co-operator seat, front brake cut off switch and emergency brake, centralised lubrication system, exhaust heater body, twin fresh air fan.

**Gauges:** ammeter, voltmeter, air pressure, engine oil pressure, water temperature, transmission oil temperature & pressure, brake oil temperature, air cleaner restriction, speedometer, tachometer, electrical hour meter and fuel level.

**Guards:** engine belly guard, cab spill guard, drive line protector, rock guard, radiator fan guard (meets ISO 3457 requirement).

**Indicators:** Hi-beam, reverse, turn signal, body up, lube oil pressure, water temperature, parking brake and emergency steering "on", alternator warning, transmission temperature & pressure, fuel level, air pressure & hydraulic oil temperature.

**Alarms:** Air pressure, water temperature, transmission oil temperature, lube oil pressure, hydraulic oil temperature, transmission filter clogging, body-up and parking brake "on".

### OPTIONAL ACCESSORIES:

Tyre inflation kit, tachograph, suspension charging kit, auto emergency steering, air conditioner and heater unit, exhaust muffler, fast fill system for fuel, cold starting kit (aps), fog lights & radial tyres.



# BH205E-AC



|                              |                              |                  |                               |
|------------------------------|------------------------------|------------------|-------------------------------|
| Max. Payload :               | <b>186 MT (205 U.S. Ton)</b> | Operating Mass : | <b>342500kg</b>               |
| Body capacity :              | <b>111 m<sup>3</sup></b>     | Fly wheel Power: | <b>2300hp(1716kW)@1900rpm</b> |
| Overall Dimension (LxBxH)mm: | <b>13636 x 8260 x 6672</b>   |                  |                               |

|                      |   |   |  |
|----------------------|---|---|--|
| ENGINE               | CUMMINS QSK60C (TIER II/TIER I COMPLIANCE)                                  |   |  |
|                      | Diesel 4 stroke, Turbo-charged, After Cooled Direct injection, Water Cooled |   |  |
|                      | Displacement: 60ltrs, Max. Torque : 9055Nm@1500rpm                          |   |  |
| ELECTRIC DRIVE       | GE MAKE 5GTA41, AC Current Alternator                                       |   |  |
| TRAVEL SPEEDS (km/h) | 65.0 Max.   |   |  |
| SUSPENSION           | Front-Rear  | Hydro-Pneumatic                             |  |
| HYDRAULIC SYSTEM     | Hoist time  | 22± 2 sec                                   |  |
| BRAKES               | Front   | Caliper on a 46" O.D. single disc per wheel |  |
|                      | Rear  | 25"/635mm dual disc-2 caliper/disc.         |  |
|                      | Parking   | Spring applied, hydraulically released      |  |

|                    |                |                  |             |
|--------------------|----------------|------------------|-------------|
| WORKING DIMENSIONS | Loading height | Full Dump Height | Tyre        |
|                    | 5.613 m        | 12.906 m         | 40R57 (STD) |

|            |                 |                    |                   |         |
|------------|-----------------|--------------------|-------------------|---------|
| VOLUMETRIC | Min turn radius | Heaped             | Struck            | Fuel(l) |
|            | 14±0.25 m       | 111 m <sup>3</sup> | 77 m <sup>3</sup> | 3550    |

|       |   |  |  |  |
|-------|---|--|--|--|
| FRAME | Box type section made of high tensile strength alloy steel with integral front bumper and rail, beams are with variable section. Steel casting's at critical stress transition zones. |  |  |  |
|-------|---|--|--|--|



# BH150E



|                              |                            |                  |                               |
|------------------------------|----------------------------|------------------|-------------------------------|
| Max. Payload :               | <b>1,36,000kg</b>          | Operating Mass:  | <b>240,000 Kg</b>             |
| Body capacity :              | <b>82cum</b>               | Fly wheel Power: | <b>1875hp(1398kW)@1900rpm</b> |
| Overall Dimension (LxBxH)mm: | <b>12155 x 7707 x 6526</b> |                  |                               |

|                      |  |                                   |                   |         |
|----------------------|--|-----------------------------------|-------------------|---------|
| ENGINE               | CUMMINS  | QSK50C-EPA (Tier II Compliant)    |                   |         |
|                      | IC-Diesel 4 stroke turbocharged, After cooled, Direct injection, Electric Engine   |                                   |                   |         |
|                      | Displacement: 50.3 ltrs    Max. Torque : 7871Nm@1500 rpm   |                                   |                   |         |
| DRIVE SYSTEM         | 5GTA22 AC Drive Alternator 5GEB23 Wheel Motors   |                                   |                   |         |
| TRAVEL SPEEDS (km/h) | 64 Max.  |                                   |                   |         |
| SUSPENSION           | Front-Rear   | Hydro-Pneumatic                   |                   |         |
| HYDRAULIC SYSTEM     | Hoist time   | 22±2 sec                          |                   |         |
| BRAKES               | Front  | Single Disc, 3-Calipers           |                   |         |
|                      | Rear   | Dual Disc, 2 caliper / Disc       |                   |         |
|                      | Parking  | Spring applied hydraulic released |                   |         |
| WORKING DIMENSIONS   | Loading height   | Full Dump Height                  | Tyre              |         |
|                      | 5400 mm  | 11816 mm                          | 33 R51 (Std)      |         |
| VOLUMETRIC           | Min turn radius  | Heaped                            | Struck            | Fuel(l) |
|                      | 13.35 ± 0.25m  | 82 m <sup>3</sup>                 | 56 m <sup>3</sup> | 3000    |
| FRAME                | Special alloy steel with integral front bumper, rear tubular cross member continuous frame rail beam with variable section and rugged continuous horse collar. |                                   |                   |         |

|  |  |  |  |  |
|--|--|--|--|--|
|  |  |  |  |  |
|  |  |  |  |  |
|  |  |  |  |  |
|  |  |  |  |  |
|  |  |  |  |  |
|  |  |  |  |  |
|  |  |  |  |  |
|  |  |  |  |  |
|  |  |  |  |  |
|  |  |  |  |  |



|                    |   |  |   |       |       |       |       |       |
|--------------------|---|--|---|-------|-------|-------|-------|-------|
| Max. Payload       | <b>91000 kg</b>   | Operating Mass:  | <b>165000 kg</b>  |       |       |       |       |       |
| Body capacity :    | <b>60 Cum</b>   | Overall Dimension (LxBxH)mm:                                 | <b>10520 x 6315 x 5250</b>  |       |       |       |       |       |
| ENGINE Make/Model  | <b>Cummins / QST30C</b>   |  | <b>MTU / 16V2000C12</b>   |       |       |       |       |       |
| Type               | 12 V type, IC-Diesel, 4 stroke, Turbo-charged, after cooled Electronic injection Tier 2 |  | 16 V type, IC-Diesel, 4 stroke, Turbo-charged, after cooled Electronic injection Tier 2 |       |       |       |       |       |
| DISPLACEMENT       | 30.5 ltrs   |  | 31.84 ltrs  |       |       |       |       |       |
| MAX. TORQUE        | 4870 Nm @ 1500 rpm  |  | 4461 Nm @ 1350 rpm  |       |       |       |       |       |
| FLYWHEEL POWER     | 1032 HP @ 2100 rpm  |  | 990 HP @ 2100 rpm   |       |       |       |       |       |
| GROSS POWER        | 1082 HP @ 2100 rpm  |  | 1050 HP @ 2100 rpm  |       |       |       |       |       |
| TRANSMISSION MAKE  | <b>BEML</b>   |  | <b>ALLISON</b>  |       |       |       |       |       |
| MODEL              |   |  | H8610A  |       |       |       |       |       |
| TYPE               | Power Shift   |  | Power Shift   |       |       |       |       |       |
| TRAVEL SPEED       | 7F / 1R   |  | 6F / 1R   |       |       |       |       |       |
|                    | 1   | 2  | 3   | 4     | 5     | 6     | 7     | R     |
| BEML               | 8.59  | 12.09  | 16.28   | 21.92 | 29.51 | 40.28 | 56.43 | 10.24 |
| ALLISON            | 9.5   | 17.4   | 23.8  | 30.9  | 40.3  | 55.4  | —     | 5.8   |
| SUSPENSION         | Front : Hydro-Pneumatic   |  | Rear : Hydro-Pneumatic  |       |       |       |       |       |
| HYDRAULIC SYSTEM   | Hoist time  |  | 12.5±1.5 sec  |       |       |       |       |       |
| BRAKES             | Front   | Air over hydraulics Dry Caliper Disc                         |   |       |       |       |       |       |
|                    | Rear  | Air over hydraulics Wet multiple Disc                        |   |       |       |       |       |       |
|                    | Parking   | Spring applied hydraulically released inboard parking Brakes |   |       |       |       |       |       |
| WORKING DIMENSIONS |   |  |   |       |       |       |       |       |
| Loading height     | 4382 mm   |  |   |       |       |       |       |       |
| Full Dump Height   | 10305 mm  |  |   |       |       |       |       |       |
| Tyre               | 27X49-48PR-bias / 27R49 (optional)  |  |   |       |       |       |       |       |
| VOLUMETRIC         |   |  |   |       |       |       |       |       |
| Min. turn radius   | 10.8m   |  |   |       |       |       |       |       |
| Heaped             | 60 Cum  | Struck   | 41.73 Cum   |       |       |       |       |       |
| Fuel tank capacity | 1400 ltrs   |  |   |       |       |       |       |       |
| FRAME              | Box section of High tensile steel with integral castings                                |  |   |       |       |       |       |       |



# BH60M



|                              |  |   |                      |          |      |     |      |
|------------------------------|--|---|----------------------|----------|------|-----|------|
| Max. Payload                 | <b>54500kg</b>   | Operating Mass:                               | <b>98000kg</b>       |          |      |     |      |
| Body capacity :              | <b>36.4cum</b>   | Fly wheel Power:                              | <b>650hp@2100rpm</b> |          |      |     |      |
| Overall Dimension (LxBxH)mm: | <b>9180 x 5420 x 4740</b>  |   |                      |          |      |     |      |
| <hr/>                        |  |   |                      |          |      |     |      |
| ENGINE                       | Model & Type <b>KTTA 19C</b>   |   |                      |          |      |     |      |
|                              | Diesel, 4 stroke 2-stage turbocharged, after cooled direct injection water cooled. |   |                      |          |      |     |      |
|                              | Displacement:19 ltrs. Max. Torque: 2659 Nm @ 1400 rpm                              |   |                      |          |      |     |      |
| TRANSMISSION                 | AVTEC M6610A   |   |                      |          |      |     |      |
| TRAVEL SPEEDS (km/h)         | 6F/2R  |   |                      |          |      |     |      |
| 1                            | 2  | 3   | 4                    | 5        | 6    | R1  | R2   |
| 9.5                          | 14.2   | 18.2  | 28.2                 | 38.1     | 56.7 | 7.4 | 12.1 |
| <hr/>                        |  |   |                      |          |      |     |      |
| SUSPENSION                   | Front-Rear   | Hydro-Pneumatic                               |                      |          |      |     |      |
| HYDRAULIC SYSTEM             | Hoist time   | 13±2 sec                                      |                      |          |      |     |      |
| BRAKES                       | Front  | Hydraulically actuated Dry caliper disc brake |                      |          |      |     |      |
|                              | Rear   | Hydraulically actuated multiple disc brake    |                      |          |      |     |      |
|                              | Parking  | In board parking brake                        |                      |          |      |     |      |
| <hr/>                        |  |   |                      |          |      |     |      |
| WORKING DIMENSIONS           | Loading height   | Full Dump Height                              | Tyre                 |          |      |     |      |
|                              | 3730 mm  | 8445 mm                                       | 24.00X35 48PR(E-4)   |          |      |     |      |
| VOLUMETRIC                   |  | Heaped  | Struck               | Fuel (l) |      |     |      |
|                              |  | 36.4 m <sup>3</sup>                           | 26.0 m <sup>3</sup>  | 790      |      |     |      |
| FRAME                        | Box section of High tensile steel with integral castings                           |   |                      |          |      |     |      |
| STEERING                     | Min. turn radius 10.5m   |   |                      |          |      |     |      |
| OPTIONAL                     | Engine   | QSK 19C TIER III                              |                      |          |      |     |      |
|                              | Transmission   | BEML make AT GEMS Powershift                  |                      |          |      |     |      |
|                              | Coal Body  | Struck  | Heaped               |          |      |     |      |
|                              |  | 36.00 m <sup>3</sup>                          | 45.46 m <sup>3</sup> |          |      |     |      |
|                              | Tyre   | 24.0-R35Radial                                |                      |          |      |     |      |



## BH35-2



|                              |  |  |                              |          |       |   |      |
|------------------------------|--|--|------------------------------|----------|-------|---|------|
| Max. Payload                 | 31,752kg   | Operating Mass:                                  | 59,560kg                     |          |       |   |      |
| Body capacity :              | 22.5cum  | Fly wheel Power:                                 | 375hp@2100rpm                |          |       |   |      |
| Overall Dimension (LxBxH)mm: | 7747x4300 x 3995   |  |                              |          |       |   |      |
| ENGINE                       | Model & Type   | Cummins NTA-855-C BIG CAM III                    |                              |          |       |   |      |
|                              | Diesel, 4 stroke, turbo-charged, after cooled, direct injection water cooled |  |                              |          |       |   |      |
|                              | Max. Torque : 1627 Nm @ 1400 rpm   |  |                              |          |       |   |      |
| TRANSMISSION                 | AVTEC CLT754 Powershift with Auto lockup clutch                              |  |                              |          |       |   |      |
| TRAVEL SPEEDS (km/h)         | 5F/1R  |  |                              |          |       |   |      |
|                              | 1  | 2  | 3                            | 4        | 5     | - | R    |
|                              | 7.74   | 12.57  | 19.85                        | 29.06    | 40.11 | - | 3.94 |
| SUSPENSION                   | Front-Rear   | Hydro-Pneumatic                                  |                              |          |       |   |      |
| HYDRAULIC SYSTEM             | Hoist time   | 16±1.5 sec                                       |                              |          |       |   |      |
| BRAKES                       | Front  | Air over hydraulics Dry Caliper Disc             |                              |          |       |   |      |
|                              | Rear   | Air over hydraulics Oil Cooled wet multiple Disc |                              |          |       |   |      |
|                              | Parking  | Dry Caliper Disc                                 |                              |          |       |   |      |
| WORKING DIMENSIONS           | Loading height   | Full Dump Height                                 | Tyre                         |          |       |   |      |
|                              | 3000 mm  | 7495mm   | 18.00X25 32PR (E-4)-tubeless |          |       |   |      |
| VOLUMETRIC                   | Turn radius  | Heaped   | Struck                       | Fuel (ℓ) |       |   |      |
|                              | 8.75 m   | 22.5 m <sup>3</sup>                              | 16 m <sup>3</sup>            | 540      |       |   |      |
| FRAME                        | Box section of High tensile steel with integral castings                     |  |                              |          |       |   |      |
| STEERING                     | Turn radius : 8.75m  |  |                              |          |       |   |      |
| OPTIONAL                     | Engine:  | BEML BS6D140-1                                   |                              |          |       |   |      |
|                              | Transmission :   | BEML make power shift transmission               |                              |          |       |   |      |
|                              | Coal Body  | Struck   | Heaped                       |          |       |   |      |
|                              |  | 23.0m <sup>3</sup>                               | 29.0m <sup>3</sup>           |          |       |   |      |
|                              | Tyre   | 18.00X25, 36 PR (E-4) tubeless                   |                              |          |       |   |      |
|                              |  | 18.00 x 25, 40 PR (E-4) tubeless                 |                              |          |       |   |      |

# CRAWLER BULLDOZERS

## Outstanding Productivity

- Engine features a generous power to weight ratio for dynamic dozing and ripping performance.
- Conveniently located armchair steering control for enhanced operator comfort with hexagonal sound suppression Cabin (BD65-1, BD85, BD155 & BD355).
- Pilot operated hydraulic system offers effortless fine control blade & Ripper through Joystick (BD65-1, BD85, BD155 & BD355).
- Hydraulically inter linked Wet multiple disc steering clutch and brakes provide excellent manoeuvrability during gradual and pivot turns.
- Engine, Radiator, fuel tank, floor frame and cabin are mounted on anti vibration cushions to reduce vibration and noise levels (BD155 & BD355).
- Durable work attachment with High tensile steel blades of different configurations available for varying types of working conditions and applications. The attachment is sturdy in construction to withstand adverse ground conditions.
- Bolt-on type segmented sprocket permits quick on site replacement. Special grooved type floating seals and unique dust seals provide extended undercarriage life (BD65-1, BD85, BD155 & BD355).
- Groove-type Floating Seals: These special seals are used in the idlers, track and carrier rollers to keep dirt out and lubricant in for extended undercarriage life as well as reduced maintenance cost.
- **Optionally, Electronic Transmission with Joystick control for Steering & Transmission is available (BD155 & BD355).**
- **Electronic Governed Engine is available (BD155 & BD355).**

## Standard accessories

- Decelerator Pedal
- Floor frame
- Alternator
- Track roller guard
- Back-up alarm
- Final drive case wear guard (BD65-1, BD155 & BD355)
- Hydraulic track adjuster
- Fire extinguisher
- Dry type air cleaner with dust ejector
- Extreme service single grouser shoes
- Master link Sealed and lubricated tracks (BD155 & BD355)
- Master pin dry type tracks (BD50, BD65-1, BD80 & BD85)
- Fully adjustable Operator's Seat with seat belt.
- Lighting system sufficient to work in dark condition
- Lever operated steering and transmission controls
- (Optional Joystick control for steering and transmission for BD155 & BD355)
- Power shift Transmission (BD65-1, BD85, BD155 & BD355)
- Mechanical direct drive Transmission (BD50 & BD80)
- Bolt on type Segmented Sprocket for easy serviceability (BD65-1, BD85, BD155 & BD355)
- ROPS-FOPS Cabin (BD65-1, BD85, BD155 & BD355)
- Canvas Canopy (BD50 & BD80)
- Semi-U Blade (BD355), Straight Blade (BD85 & BD155) & Angle Blade (BD50, BD65-1 & BD80)

## Optional Accessories

- Air Conditioner with heater (BD65-1, BD85, BD155 & BD355)
- Giant Ripper with pin puller arrangement (BD155 & BD355)
- Multi shank Ripper
- Coal Blade
- Rake dozer (BD65-1, BD155 & BD355)
- Auto fire detection and suppression system (AFDSS)
- Auto lubrication system (ALS)
- Rear Vision system
- Warning system for operator's fatigue

# BD475-2



|   |  |  |                         |                   |          |                          |
|---|--|--|-------------------------|-------------------|----------|--------------------------|
| Operating mass (Standard equipment with Semi-U-dozer) |  | 95420 kg   |                         |                   |          |                          |
| Fuel tank Capacity litre                              |  | 1520   |                         |                   |          |                          |
| Overall Dimensions (Std.) (LxBxH) mm                  |  | 9273 x 5265 x 4585   |                         |                   |          |                          |
| ENGINE  | Model  | Cummins QST30 EPA Tier II  |                         |                   |          |                          |
|   | Type   | Electronic, Diesel, 4 Stroke, water cooled V-type, turbo charged & Charge Air cooled |                         |                   |          |                          |
|   | Flywheel Power   | 634 kW (850 hp) @ 2100 rpm   |                         |                   |          |                          |
|   | Max. draw bar pull   | 1577 kN (Usable pull will depend upon traction and weight of equipped tractor)       |                         |                   |          |                          |
| TRAVEL SPEEDS (kmph)                                  | 1st  | 2nd  | 3rd                     |                   |          |                          |
|   | Forward  | 0 - 3.5  | 2.0 - 6.5               | 3.0 - 11.6        |          |                          |
|   | Reverse  | 0 - 4.5  | 2.0 - 8.3               | 3.0 - 14.8        |          |                          |
| TORQUE CONVERTER                                      | PTM 44650 DM/3 element, single stage, single phase with lockup clutch  |  |                         |                   |          |                          |
| TRANSMISSION  | Planetary power shift, electronically operated 3 forward, 3 reverse  |  |                         |                   |          |                          |
| STEERING CLUTCH                                       | Wet multiple disc, spring loaded hydraulically released  |  |                         |                   |          |                          |
| FINAL DRIVE   | Spur & Planetary gear double reduction   |  |                         |                   |          |                          |
| BRAKE   | Wet multiple disc, spring loaded hydraulically released  |  |                         |                   |          |                          |
| UNDERCARRIAGE   | Pitch  | Ground Pressure  | Shoe Width & Nos        |                   |          |                          |
|   | 2770 mm  | 157.51 kPa (Std.Dozer)   | 710 mm & 39 (each side) |                   |          |                          |
| DIMENSIONS (in mm) - Blade                            |  |  |                         |                   |          |                          |
| DOZER:  | Length   | Height   | Lift above ground       | Drop below ground | Max Tilt | Blade cap.m <sup>3</sup> |
| Semi-U  | 5265   | 2610   | 1630                    | 894               | 1250     | 25.6                     |
| U   | 6205   | 2610   | 1630                    | 894               | 1475     | 34.4                     |
| Standard  | Hydrostatic fan drive, Tilttable floor frame, Pilot operated Joystick for blade, Electronic joystick for steering & brake, counter weight with drawbar, Fatigue monitoring system, Rear view camera, Fully adjustable pneumatic suspension operator seat, AFSS & ALS |  |                         |                   |          |                          |
| Optional:   | ROPS Canopy, Variable Giant Ripper, U blade  |  |                         |                   |          |                          |

# BD355



|   |                               |
|---|-------------------------------|
| Operating mass (Standard equipment with Semi-U-dozer) | 46550 kg                      |
| Fuel tank refill capacity                             | 760ltrs                       |
| Overall Dimension                                     | 7163 x 4315 x 3695 mm (LxBxH) |

|                      |   |   |                        |        |
|----------------------|---|---|------------------------|--------|
| ENGINE               | Model & Type                                | <b>BEML BS6D 170-1</b>                                      |                        |        |
|                      |   | 6 inline, Diesel, 4 stroke, turbo-charged, direct injection |                        |        |
|                      | Flywheel Power                              | 310 kW (416 hp) @ 2000 rpm                                  |                        |        |
|                      | Max. draw bar pull                          | 82,000 Kg*  |                        |        |
| TRAVEL SPEEDS (kmph) | 1st   | 2nd   | 3rd                    | 4th    |
| Forward              | 0-3.3                                       | 0-5.1   | 0-8.5                  | 12.7   |
| Reverse              | 0-3.2                                       | 0-5.0   | 0-8.47                 | 0-12.6 |
| TORQUE CONVERTER     | TCS46-1A                                    | 3 element, single stage, single phase                       |                        |        |
| TRANSMISSION         | Planetary power shift, 4 forward, 4 reverse |   |                        |        |
| STEERING CLUTCH      | Wet, multiple disc, hydraulically actuated  |   |                        |        |
| FINAL DRIVE          | Spur & Planetary gear, Double reduction     |   |                        |        |
| BRAKE                | Wet Contracting band with Hydraulic Booster |   |                        |        |
| UNDERCARRIAGE        | Pitch                                       | Ground Pressure   | Shoe Width & Nos       |        |
|                      | 2260mm                                      | 0.85 kg/cm <sup>2</sup>                                     | 610mm, 39nos Each side |        |

| DIMENSIONS (in mm) - Blade |        |        |            |            |            |                          |
|----------------------------|--------|--------|------------|------------|------------|--------------------------|
| DOZER:                     | Length | Height | Lift above | Drop Below | Max Tilt   | Blade cap.m <sup>3</sup> |
| Straight                   | 4315   | 1875   | 1545       | 700        | 1000       | 11.6                     |
| Angle                      | 5230   | 1350   | 1640       | 720        | 550        | 5.9                      |
| Semi-U                     | 4315   | 1955   | 1545       | 700        | 1000       | 13.0                     |
| U                          | 4715   | 1875   | 1545       | 700        | 1000       | 15.6                     |
| Coal                       | 5530   | 2125   | 1565       | 650        | (optional) | 24.5                     |

Std. Semi-U dozer with Joystic controls for work attachment, Electronic display & ROPS Cabin

Optional:  BD355 with electronic engine and automatic transmission with single joystick control for steering and transmission

Electronic Engine is also available, MSR, GR, AFSS, ALS, AC with heater

\*NOTE : Usable Pull will depend upon traction & weight of equipped tractor



|  |                               |
|--|-------------------------------|
| Operating mass (Standard equipment with straight tilt dozer) | 39105 kg                      |
| Fuel tank refill capacity                                    | 620 ltr                       |
| Overall Dimension  | 6555 X 4130 X 3745 mm (LxBxH) |

|                           |   |                         |                            |
|---------------------------|---|-------------------------|----------------------------|
| <b>ENGINE</b>             | Model & Type <b>BEML BS6D 170-1</b>                         |                         |                            |
|                           | 6 inline, Diesel, 4 stroke, turbo-charged, direct injection |                         |                            |
|                           | Flywheel Power  |                         | 242 kW (324 hp) @ 2000 rpm |
|                           | Max. draw bar pull  |                         | 59,000kg*                  |
| <b>TRAVEL SPEEDS kmph</b> | 1st   | 2nd                     | 3rd                        |
| Forward                   | 0-3.7   | 0-6.8                   | 0-11.8                     |
| Reverse                   | 0-4.5   | 0-8.2                   | 0-13.7                     |
| <b>TORQUE CONVERTER</b>   | 3 element, single stage, single phase                       |                         |                            |
| <b>TRANSMISSION</b>       | Planetary power shift, 3 forward, 3 reverse                 |                         |                            |
| <b>STEERING CLUTCH</b>    | Wet, multiple disc, hydraulically actuated                  |                         |                            |
| <b>FINAL DRIVE</b>        | Spur gear & Double reduction                                |                         |                            |
| <b>BRAKE</b>              | Wet Contracting band with Hydraulic Booster                 |                         |                            |
| <b>UNDERCARRIAGE</b>      | Pitch   | Ground Pressure         | Shoe Width & Nos           |
|                           | 2140mm  | 0.86 kg/cm <sup>2</sup> | 560mm, 41nos Each side     |

| DIMENSIONS (in mm) Blade |        |        |            |            |          |                          |
|--------------------------|--------|--------|------------|------------|----------|--------------------------|
| DOZER:                   | Length | Height | Lift above | Drop Below | Max Tilt | Blade cap.m <sup>3</sup> |
| Straight                 | 4130   | 1590   | 1560       | 560        | 1000     | 7.9                      |
| Angle                    | 4850   | 1140   | 1475       | 625        | 400      | 4.2                      |
| Semi-U                   | 4130   | 1790   | 1560       | 560        | 1000     | 9.7                      |
| U                        | 4225   | 1590   | 1560       | 560        | 1020     | 10.1                     |
| Coal                     | 5260   | 1795   | 1625       | 545        | -        | 17.4                     |

Std. Straight-Tilt dozer with Joystick controls for work attachments, Electronic display & ROPS Cabin

Optional : | BD155 with electronic engine and automatic transmission with single joystick control for steering and transmission.

| Electronic Engine is also available

Optional : | MSR, GR, AC with Heater, AFSS, ALS.

\*Note : Usable pull will depend upon traction & weight of equipped tractor.

## Wheel Dozers



| EQUIPMENT                             | <b>BD30W-1</b>    | <b>BD14W</b>            |
|---------------------------------------|-------------------|-------------------------|
| OPERATING MASS(kg)                    | 30000             | 15000                   |
| OVERALL DIMENSION                     | 8700x4500x4090 mm | 7120x3655x3330 mm       |
| ENGINE                                | BEML              | BEML                    |
|                                       | <b>BS6D140-1</b>  | <b>BS6D105-1</b>        |
| POWER (fhp/rpm(kW))                   | 300/2100(224)     | 126/2000(94)            |
| HYD. SYSTEM TYPE                      | Gear Pump         | Vane Pump               |
| RELIEF PRESSURE (kg/cm <sup>2</sup> ) | 140               | 140                     |
| TRAVEL SPEEDS                         | 3F / 3R           | 4F / 3R                 |
| SPEED (kmph) Min F/R                  | 6.67/6.4          | 6.28 / 6.61             |
| Max F/R                               | 24.75 / 23.72     | 31.4 / 22.34            |
| TURNING RADIUS (mm)                   | 9400              | 7200 (min)              |
| MAX RIMPULL (kg)                      | 22000             | 10200                   |
| TRANSMISSION                          | Powershift        | Powershift              |
| FRONT AXLE                            | Fixed             | Fixed                   |
| REAR AXLE                             | Oscillating       | Oscillating             |
| REAR OSCILLATION                      | 15° (Both side)   | ±10°                    |
| BRAKES                                | Wet Multi disc    | Wet Multi disc          |
| FUEL TANK (litres)                    | 445               | 185                     |
| TYRE(F/R)                             | 29.5X29-28PR      | 18X25, 24PR (Tube less) |
| BLADE (mm)                            | Straight          | Angling & Tilting       |
| Blade size (LxH)                      | 4500 X 1470       | 3655 X 965              |
| Max Lift above ground                 | 1440              | 1050                    |
| Max Drop below ground                 | 415               | 660                     |
| Max tilt adjustment                   | 800               | 400                     |
| Blade angle                           | 35°               | 22.5°                   |
| Blade Capacity (cum)                  | 4.7 (Std.)        | 2.4 (Std)               |

# HYDRAULIC EXCAVATORS

## Salient Features :

### Efficient hydraulic System :

- Positive control main pumps hydraulic system with advance optimum hydraulic control system assures easy & smooth independent and simultaneous feature makes full use of engine output power for maximum productivity with faster cycle time.

### Powerful economic engine:

- BEML diesel turbo charged engine, 4 stroke, water cooled, overhead valve, direct injection system, provides reduced fuel consumption and assures high operational economy. The turbo charger with after cooler allows engine to attain high performance even on high altitude job sites.

### Electrical drive :

- AC Induction motor option available with 3.3 / 6.6 kV for BE1000E-1 and BE1800E

### Effort free operation:

- Work equipment controls are simple and light touch due to the hydraulically assisted control system.

### Maximum working performance:

- Mode selection switch provided in the operator's cabin can be used for high excavation efficiency. Depending on the operations like general digging, slope finishing etc., the mode can be selected for a particular application.

### Easy maintenance:

- Centralised monitoring system within the operator's cab allows fast daily checks and also keeps the operator constantly informed of any abnormality during operation.

### Operator comfort:

Specially designed cab provides plenty of work space and excellent visibility and mounted with cabin dampers.

## STANDARD EQUIPMENT

- Starting Motor
- Alternator
- 2/4 Batteries
- Dry type air cleaner with turbo Pre-cleaner
- PPC hydraulic control
- Track shoe
- Hydraulic Track adjuster (BE700, BE1000-1, BE1000E-1, BE1800D & BE1800E)
- Grease filling type Track adjuster (BE75, BE210, BE220G & BE300LC)
- Fully hydrostatic drive for Swing & Travel
- Suction type fan
- Radiator, Oil cooler & CAC (wherever applicable)
- Front light
- Electric horn
- Counter weight
- Rear view mirror
- All weather steel cab (with safety glass windows, lockable door, window wiper, room lamp and adjustable seat with seat belt & remainder)
- Tool kit
- Portable fire extinguisher
- FOPS structure - (BE700, BE1000-1 & BE1000E-1)
- FOPS Integrated Cabin for BE1800E & BE1800D with Viscous mounts
- ROPS cabin - (BE220G, BE300LC)
- High rise cabin (BE1000-1, BE1000E-1, BE1800D & BE1800E)
- Front windshield protective guard
- AFDSS (Automatic fire detection and suppression system)
- Rear Vision system
- Warning system for operator's fatigue.
- Travel alarm
- Cabin heater / air conditioner with defrosting

## OPTIONAL ACCESSORIES

- Windshield washer
- High rise cabin (BE220G, BE300LC & BE700)
- Track shoes
- Long arm
- Extra long arm
- Short arm
- Super long front reach (BE220G)
- Wide range of backhoe / Face shovel buckets
- Auto lubrication system
- Electronic monitoring system



# BE1800E



|                                |                     |                     |
|--------------------------------|---------------------|---------------------|
| Equipment                      | LOADING SHOVEL      | BACKHOE             |
| Operating mass (Std equipment) | 175,000kg           | 175,000 kg          |
| Overall Dimension (LxBxH)mm    | 13235 X 6197 X 6750 | 17300 X 6197 X 7100 |
| Gross Horse Power              | 2 X 300kW@1500rpm   |                     |

|                  |   |                                      |  |  |
|------------------|---|--------------------------------------|--|--|
| MOTOR            | TYPE  | <b>Squirrel cage Induction motor</b> |  |  |
|                  | Output  | 2 x 300kW                            |  |  |
| HYDRAULIC SYSTEM | Unique four pump system, and independent swing function |                                      |  |  |
| HYDRAULIC PUMP   | 4 variable capacity piston pumps                        |                                      |  |  |

|                              |                                |                      |            |            |
|------------------------------|--------------------------------|----------------------|------------|------------|
| RELIEF PRESSURE              | Boom/Arm/Bucket                | Swing                | Travel     | Pilot      |
| (kg/cm <sup>2</sup> )        | 320                            | 320                  | 320        | 35         |
| HYD. CYLINDER (Dia X length) | Boom                           | Arm                  | Bucket     |            |
|                              | BH                             | 2X280X2660           | 2X250X2180 | 2X200X2170 |
|                              | LS                             | 2X280X2110           | 2X225X1830 | 2X225X1870 |
| TRAVEL SPEED                 | 2.7kmph                        | Swing Speed : 4.5rpm |            |            |
| DRIVE TYPE                   | Fully Hydrostatic drive system |                      |            |            |

|               |              |       |                        |               |
|---------------|--------------|-------|------------------------|---------------|
| UNDERCARRIAGE | Track Length | Gauge | Shoe Width & Nos       | Draw bar pull |
|               | 5780         | 4350  | 810mm, 49nos Each side | 105000 kgf    |

|                    |                |      |      |         |
|--------------------|----------------|------|------|---------|
| STANDARD EQUIPMENT |                | Boom | Arm  | Bucket  |
|                    | Loading Shovel | 5900 | 4400 | 10.2cum |
|                    | Backhoe        | 9100 | 4100 | 10.5cum |

|                |    |        |         |           |           |
|----------------|----|--------|---------|-----------|-----------|
| MAX WORK RANGE |    | Dig ht | Dump ht | Dig reach | Dig Depth |
| (mm)           | LS | 14110  | 10230   | 13140     | 4050      |
| (mm)           | BH | 13550  | 8730    | 16450     | 10000     |

|                   |                    |  |                    |  |  |
|-------------------|--------------------|--|--------------------|--|--|
| FORCES LS/BH (kN) | Dig Force: 716/571 |  | Arm Force: 716/535 |  |  |
|-------------------|--------------------|--|--------------------|--|--|

|                 |  |  |  |  |  |
|-----------------|--|--|--|--|--|
| WORK ATTACHMENT | Soft touch joystick pilot controls with accumulator system |  |  |  |  |
|-----------------|--|--|--|--|--|

|          |   |  |  |  |  |
|----------|---|--|--|--|--|
| OPTIONAL | Heater, Trackshoe 1010mm, FOPS, Air conditioner |  |  |  |  |
|----------|---|--|--|--|--|





|                                |                       |                     |
|--------------------------------|-----------------------|---------------------|
| Equipment                      | LOADING SHOVEL        | BACKHOE             |
| Operating mass (Std equipment) | 175,000kg             | 175,000kg           |
| Overall Dimension (LxBxH)mm    | 13235 X 6000 X 6750   | 17300 X 6000 X 7100 |
| GROSS HORSE POWER              | 2 X 354 kw @ 2000 rpm |                     |

|                  |  |                           |  |  |
|------------------|--|---------------------------|--|--|
| ENGINE           | Model  | <b>2XBEML BSAA6D140EG</b> |  |  |
|                  | Gross Horse Power  | 2 X 354kW@2000 rpm        |  |  |
| HYDRAULIC SYSTEM | Unique four pump system, and Independent Swing Operation |                           |  |  |
| HYDRAULIC PUMP   | 4 nos variable Displacement piston pump                  |                           |  |  |

|                              |                                |                      |            |            |
|------------------------------|--------------------------------|----------------------|------------|------------|
| RELIEF PRESSURE              | Boom/Arm/Bucket                | Swing                | Travel     | Pilot      |
| (kg/cm <sup>2</sup> )        | 320                            | 320                  | 320        | 35         |
| HYD. CYLINDER (Dia X length) | Boom                           | Arm                  | Bucket     |            |
|                              | BH                             | 2X280X2660           | 2X250X2180 | 2X200X2170 |
|                              | LS                             | 2X280X2110           | 2X225X1830 | 2X225X1870 |
| TRAVEL SPEED                 | 2.7kmph                        | Swing Speed : 4.5rpm |            |            |
| DRIVE TYPE                   | Fully Hydrostatic drive system |                      |            |            |

|                    |  |        |                       |               |           |
|--------------------|--|--------|-----------------------|---------------|-----------|
| UNDERCARRIAGE      | Track Length   | Gauge  | Shoe Width & Nos      | Draw bar pull |           |
|                    | 5780   | 4350   | 810mm, 49nos Eachside | 105000 kgf    |           |
| STANDARD EQUIPMENT |  |        | Boom                  | Arm           | Bucket    |
|                    | Loading Shovel   |        | 5900                  | 4400          | 10.2cum   |
|                    | Backhoe  |        | 9100                  | 4100          | 10.5cum   |
| MAX WORK RANGE     |  | Dig ht | Dump ht               | Dig reach     | Dig Depth |
| (mm)               | LS   | 14110  | 10230                 | 13140         | 4050      |
| (mm)               | BH   | 13550  | 8730                  | 16450         | 10000     |
| FORCES LS/BH (kN)  | Dig Force: 716/571   |        | Arm Force: 716/535    |               |           |
| WORK ATTACHMENT    | Soft touch joystick pilot controls with accumulator system |        |                       |               |           |
| OPTIONAL           | Heater, Trackshoe 1010mm                                   |        |                       |               |           |

# BE1000-1



|                                |   |   |                                 |                      |
|--------------------------------|---|---|---------------------------------|----------------------|
| Equipment                      | LOADING SHOVEL  | BACKHOE   |                                 |                      |
| Operating mass (Std equipment) | 98,000kg  | 95,000kg  |                                 |                      |
| Overall Dimension (LxBxH)mm    | 10715 X 4610 X 5770   | 15790 x 4610 x 5800                                     |                                 |                      |
| Net Power (FHP)                | 404kW(542 FHP)@1700 rpm   |   |                                 |                      |
| ENGINE                         | Model   | <b>BEML BSA6D170 EG</b>                                 |                                 |                      |
|                                |   | 6 inline, Diesel, 4 stroke, Turbo charged, after cooler |                                 |                      |
|                                | Flywheel Power  | 404kW(542 FHP)@1700 rpm                                 |                                 |                      |
| HYDRAULIC SYSTEM               | Unique three pump system, Independent closed loop swing                       |   |                                 |                      |
| HYDRAULIC PUMP                 | 2nos variable Displacement tandem pump  |   |                                 |                      |
|                                | 1 No variable Displacement piston pump  |   |                                 |                      |
| RELIEF PRESSURE                | Boom/Arm/Bucket   | Swing   | Travel                          | Pilot                |
| (kg/cm <sup>2</sup> )          | 320   | 300   | 320                             | 35                   |
| HYD. CYLINDER                  | Boom  | Arm   | Bucket                          | Bottom Dump Cylinder |
| (Qty-Bore x Stroke mm)         | LS 2-φ225 x 1805  | 2-φ180 x 1765   | 2-φ200 x 1530                   | 2-φ140 x 435mm       |
|                                | BH 2-φ225 x 2200  | 1-φ250 x 2015   | 1-φ225 x 1630                   | -                    |
| TRAVEL SPEED                   | High - 3.4 kmph.  |   | Swing Speed : 4.5 rpm           |                      |
| DRIVE TYPE                     | Fully hydrostatic drive   |   |                                 |                      |
| UNDERCARRIAGE                  | Track Length  | Track Gauge   | Shoe Width & Nos                | Draw bar pull        |
|                                | 5030 mm   | 3900 mm   | 710 mm, 51 nos. Each side       | 62000 kgf            |
| STANDARD EQUIPMENT             |   | Boom  | Arm                             | Bucket               |
|                                | Loading Shovel  | 5100mm  | 3800 mm                         | 6.1 m <sup>3</sup>   |
|                                | Backhoe   | 7900mm  | 3415 mm                         | 5.0 m <sup>3</sup>   |
| MAX WORK RANGE (mm)            | Dig ht  | Dump ht   | Dig reach                       | Dig Depth            |
|                                | LS  | 12170   | 8780                            | 11380                |
|                                | BH  | 12700   | 8400                            | 13900                |
| FORCES LS/BH (kg)              | Budget Dig Force : 58500/37000  |   | Arm crowding Force: 56000/34000 |                      |
| WORK ATTACHMENT                | Soft touch joystick pilot controls with accumulator system                    |   |                                 |                      |
| OPTIONAL                       | LS: Bottom dump m <sup>3</sup> (4.5, 5.5 & 7.0)                               |   |                                 |                      |
|                                | BH: boom (9.25) Arm(4.6, 5.7) Bucket m <sup>3</sup> (3.1, 3.7, 4.3, 5.4, 5.5) |   |                                 |                      |

**BE1000E-1 : Electric version models with 6.6kv / 3.3kv, 400kW@1477rpm, with 3 phase Induction motor are also available**



|                                |   |  |                       |                       |
|--------------------------------|---|--|-----------------------|-----------------------|
| Equipment                      | LOADING SHOVEL  |  | BACKHOE               |                       |
| Operating mass (Std equipment) | 70,000 kg   |  | 69,500 kg             |                       |
| Overall Dimension (LxBxH)mm    | 9540x3910x5050  |  | 12880x3910x4910       |                       |
| Net Power (FHP)                | 309kW (415 FHP) @ 1800 rpm  |  |                       |                       |
| ENGINE                         | Model   | <b>BEML BSA6D140-1</b>   |                       |                       |
|                                |   | 6 inline, Diesel, 4-stroke, Water cooled, Turbo charged, After cooled & direct injection |                       |                       |
|                                | Flywheel Power  | 309kW (415 FHP) @ 1800 rpm   |                       |                       |
| HYDRAULIC SYSTEM               | Unique three pump system, Independent closed loop swing   |  |                       |                       |
| HYDRAULIC PUMP                 | 2 nos Variable Capacity piston pumps with positive controls,<br>1 no Variable capacity piston pump for swing with closed loop |  |                       |                       |
| RELIEF PRESSURE                | Boom/Arm/Bucket   | Swing  | Travel                | Pilot                 |
| (kg/cm <sup>2</sup> )          | 320   | 300  | 275                   | 35                    |
| HYD. CYLINDER                  | Boom  | Arm  | Bucket                | Bottom Dump Cylinder  |
| (Qty-Bore x Stroke, mm)        | LS 2- $\phi$ 180 x 1490   | 2- $\phi$ 225 x 1530   | 2- $\phi$ 180 x 1300  | 2- $\phi$ 140 x 435mm |
|                                | BH 2- $\phi$ 200 x 1892   | 1- $\phi$ 200 x 2250   | 2- $\phi$ 180 x 1540  | -                     |
| TRAVEL SPEED                   | High - 4.6 kmph   | Low - 2.7 kmph   | Swing speed : 7.5 rpm |                       |
| DRIVE TYPE                     | Fully hydrostatic drive with two speeds   |  |                       |                       |
| UNDERCARRIAGE                  | Track Length  | Track Gauge  | Shoe Width & Nos      | Draw bar pull         |
|                                | 4500 mm   | 3300 mm  | 610mm, 47 each side   | 56000 kgf             |
| STANDARD EQUIPMENT             |   | Boom   | Arm                   | Bucket                |
|                                | Loading Shovel  | 4600 mm  | 3400 mm               | 4.5 m <sup>3</sup>    |
|                                | Backhoe   | 7100 mm  | 2870 mm               | 4.0 m <sup>3</sup>    |
| MAX WORK RANGE (mm)            | Dig ht  | Dump ht  | Dig reach             | Dig Depth             |
|                                | LS 10840  | 7710   | 10130                 | 3530                  |
|                                | BH 11040  | 7300   | 12080                 | 8070                  |
| FORCES LS/BH (kg)              | Bucket Dig Force : 44000/30300 Arm Crowding Force: 45000/29755  |  |                       |                       |
| WORK ATTACHMENT                | Soft touch joystick pilot controls with accumulator system  |  |                       |                       |
| OPTIONAL                       | LS : Bottom dump m <sup>3</sup> (3.1 & 3.8)   |  |                       |                       |
|                                | BH : Boom (8.4) Arms (3.6, 5.1), Bucket m <sup>3</sup> (2.4, 2.8, 3.3, 3.5, 4.5)  |  |                       |                       |

**BE700E : Electric version models with 6.6kv/ 3.3kv, 300 kw@1477rpm, with 3 phase induction motor are also available.**

# WHEEL LOADERS

## SALIENT FEATURES :

Powerful Turbo-charged engine for fuel economy. Optimum power to weight ratio for wide range of loading applications complying with Bharat Stage III(CEV) emission norms.

Pilot operated hydraulic system with joystick offers effortless work attachment control.

Orbitrol steering system provides excellent manoeuvrability during gradual and sharp turns with enhanced operator comfort.

Engine and Transmission are mounted on anti-vibration rubber cushions to isolate vibration and to maintain low noise level.

## STANDARD EQUIPMENT

Engine starter, Alternator  
Head Lights  
Rear Working Lights  
Brake Lamp  
Coolant Temperature  
Service Meter  
Voltmeter  
Engine Oil Pressure  
Dust Indicator  
Cabin Fan  
General Purpose Bucket  
Front Light  
Counter Weight  
Rear View Mirror  
Electronic Monitoring System  
All Weather Steel Cab  
Safety Glass for Windows  
Lockable Door  
Window Wiper  
Cabin Lamp  
Suspension Seat  
Tool Kit  
Portable Fire Extinguisher  
Wind Shield & Washer

## OPTIONAL ACCESSORIES

ROPS/FOPS Cabin  
Air Conditioner with Heater and Defroster  
Boom Kick out  
Rear view Camera  
Bucket Positioner  
Cold Starting kit  
Auto fire detection and suppression system  
Auto lubrication system  
Operator fatigue monitoring system  
Payload monitoring system  
Operator seat belt warning  
Optional Buckets of varying size  
Cabin interiors with ABS panels



|                            |          |  |       |       |
|----------------------------|----------|--|-------|-------|
| <b>EQUIPMENT</b>           |          | <b>BL40</b>  |       |       |
| OPERATING MASS             |          | 28000 kg   |       |       |
| NET POWER fhp/rpm(kW)      |          | 300@2100rpm (224)  |       |       |
| OVERALL DIM (LxBxH) (mm)   |          | 9470 X 3510 X 4090   |       |       |
| BUCKET CAPACITY            |          | 4.7 cum (std)  |       |       |
| ENGINE BEML                |          | BS6D140-1  |       |       |
|                            |          | Turbocharged, Water Cooled direct injection  |       |       |
| TRANSMISSION               |          | Powershift 3F / 3R   |       |       |
| TRAVEL SPEED (kmph)        |          | I  | II    | III   |
| Forward                    |          | 6.67   | 12.9  | 24.75 |
| Reverse                    |          | 6.4  | 12.57 | 23.72 |
| TURNING RADIUS             |          | 8900 mm  |       |       |
| HYD. SYSTEM CAPACITY       |          | 181 lts.   |       |       |
| RELIEF PRESSURE            |          | 210 bar  |       |       |
| HYD. CYLINDERS             | Lift     | 2X200X805 mm   |       |       |
| (Dia X Length)             | Dump     | 1X225X526 mm   |       |       |
|                            | Steering | 2X110X547.5 mm   |       |       |
| TYRES                      |          | 29.50X29-28PR (L-3)  |       |       |
| FUEL TANK                  |          | 445 lts.   |       |       |
| LOADER Dump clearance (mm) |          | 3265   |       |       |
| Operating height (mm)      |          | 6095   |       |       |
| Dump angle                 |          | 45°  |       |       |
| ARTICULATION               |          | 35° each side  |       |       |
| BREAKOUT FORCE             |          | 23500 kg (With Std. Bucket)  |       |       |
| Optional Bucket            |          | 5 cum (light duty), 6 cum (extra light), 2.8 cum<br>3.2 cum (Iron one), 3.5 cum, 4.0 cum |       |       |

# MINING & CONSTRUCTION EQUIPMENT

## MOTOR GRADERS

### SALIENT FEATURES

**Performance :** High Power BEML/Ashok Leyland BS-III Emission norms engine, Hydro Shift/ Power shift transmission with automatic lock-up clutch and heavy-duty Final drive with differential lock/unlock system to provide optimum combination of speed and tractive efforts. All graders comes with Chain driven Tandem axle for better manoeuvrability.

BEML launched BG405A Motor Grader with Automatic Power Shift transmission and Full Hydraulic brake system for construction segment which is designed and developed with in-house R&D Effort.

**Productivity:** High Power engine coupled with high performance blade ensures high productivity. Finger tip control of transmission gear shifting provides high manoeuvrability.

**Reliability:** Adjustment-free wet multiple disc brakes for Tandem axle offer better reliability. Comes with Air over Hydraulic brake system for complete equipment control.

**Serviceability:** Low maintainability and repair-ability index, evaluated through SAE J 817A, meeting global standard.

**Manoeuvrability:** Orbitrol Power steering with a good combination of steering, steering angle, tread and wheel base provide high degree of manoeuvrability. Frame articulation and Wheel leaning for quick and short vehicle turning on congested work sites.

**Control:** Ideally located spacious cabin with ergonomically designed operator seat and control offer maximum comfort and operational ease.

**Safety:** Features include integral ROPS/FOPS cabin, emergency steering, dual brake system to meet relevant safety standards, Engine ignition interlock to ensure transmission is in neutral condition.

### STANDARD ACCESSORIES

**General:** Integral ROPS/FOPS cabin, electronic dashboard system, vandalism protection cap (fuel tank), head and tail lights, horn, turn signal lights, alternator, electric starter, key switch, wiper motor, engine shut-off switch, manual emergency steering, wind shield washer, rear view mirror, portable fire extinguisher, tool kit, parking brake Switch, tilt-able steering Console and work-adjustment control levers, Pilot Check valve for blade lift, Blade tipping, Front wheel leaning, Drawbar side shift, Frame Articulation cylinder, Front & Rear working lamps, Front Pull Hook, central warning lamps & buzzer, battery cut-off-switch, backup alarm, cabin floor mat, safety seat belt, emergency brake, fresh air fan, Tungsten carbide tipped cutting edge.

**Gauges:** Ammeter, Voltmeter, air pressure, engine oil pressure, water temperature, transmission oil temperature, air cleaner restriction, speedometer, tachometer, electrical hour meter and fuel level, Transmission gear range & diagnostics.

**Guards:** Engine Cover, Transmission belly guard, Radiator fan guard (meets ISO 3457 requirement).

**Indicators:** Hi-beam, reverse, turn signal, lube oil pressure, water temperature, parking brake "on", alternator warning, transmission temperature & pressure, fuel level, air pressure.

**Alarms:** Air pressure, water temperature, Vehicle over-speed, transmission oil temperature, lube oil pressure, transmission filter clogging, parking brake "on", Operator fatigue.

### OPTIONAL ACCESSORIES:

Front Dozer attachment, Ripper Attachment, Scarifier Attachment, ROPS Cabin, Tyre inflation kit, auto emergency steering, Auto Lubrication system, Auto Fire Suppression system, Manual blade down system, air conditioner and heater unit, fast fill system for fuel, cold starting kit, fog lights, Operator fatigue monitoring system, Auto Blade levelling system, G-3 Rock type tyres.

## Motor Graders



|                          |   |
|--------------------------|---|
| EQUIPMENT                | <b>BG825</b>  |
| OPERATING MASS           | 28,000 kg   |
| ENGINE BEML              | BS6D140EG   |
| POWER                    | 209kW(280hp)@2100rpm  |
| FRAME                    | Articulated   |
| TRANSMISSION             | BEML Hydroshift   |
| TRAVEL SPEEDs            | 8F / 8R   |
| SPEED(Kmph) max (F/R)    | 44.9 / 47.9   |
| min(F/R)                 | 4.0 / 4.3   |
| DRAW BAR PULL (kg)       | 14420   |
| STEERING ANGLE           | 50° each side   |
| TURNING RAIDUS (mm)      | 7900  |
| MOULD BOARD (LHT) in mm  | 4876 x 692 x 25   |
| CUTTING EDGE (LHT) in mm | 2438 x 203 x 19   |
| BLADE max lift above     | 490 mm  |
| max drop below           | 680 mm  |
| Max shoulder reach (L/R) | 2400 / 2400   |
| Max bank cut angle       | 90°   |
| TYRES                    | 18.00 x 25 - 12 PR (L-3)<br>Rock type tubeless tyres                                |
| BRAKES                   | Foot operated, oil discbrakes<br>air actuated on 4 rear wheels                      |
| OVERALL DIM. (LWH),mm    | 10010 x 3050 (tyre end to end) x 4000   |
| OPTIONAL                 | Rear mtd. Ripper, Push plate, type inflation kit, AC cabin<br>Auto lub., Auto fire. |
|                          |   |
|                          |   |
|                          |   |



| Equipment                               |   | <b>BP100</b>                 | <b>BP70</b>                  | <b>BP41</b>                                  |
|---|---|------------------------------|------------------------------|--|
| LIFT CAPACITY (kg)<br>(As per ISO 8813) |   | 100000                       | 70000                        | 41000  |
| DIMENSION, mm (LXW)                     |   | 5917X4931                    | 5660X3760                    | 4890X3425                                    |
| ENGINE                                  | BEML  | <b>BS6D170-1</b>             | <b>BS6D170-1</b>             | <b>B6D125</b>                                |
| POWER fhp/rpm(kW)                       |   | 416/2000(310)                | 324/2000(242)                | 180/1850(134)                                |
| OPERATING WEIGHT (kg)                   |   | 62000                        | 46000                        | 29870  |
| TRANSMISSION (BEML)                     |   | Powershift<br>Planetary gear | Powershift<br>Planetary gear | Helical gear<br>Constant mesh, hand operated |
| GEAR F/R                                |   | 4F/4R                        | 3F/3R                        | 5F/4R  |
| TRAVEL SPEED (Kmph)                     |   | 3.3-12.7/3.2-12.6            | 3.7-11.8/4.5-13.7            | 2.4-10.0/3.1-9.6                             |
| ROPE BREAK STRENGTH                     |   | 48114 kg                     | 27400 kg                     | 21400 kg                                     |
| BOOM                                    | Overhang  | 1.4 - 8.0m                   | 1.2 - 6.2m                   | 1.22 - 5.5m                                  |
|   | Length  | 8000                         | 6200                         | 5500   |
| HOOK SPEED                              | Raise   | 2.8/6                        | 6.5 / 13.5                   | 6.5 / 13.5                                   |
| (m/min)                                 | Lower   | 2.8/6                        | 6.5 / 13.5                   | 6.5 / 13.5                                   |
| TRACK GUAGE (mm)                        |   | 2700                         | 2380                         | 2200   |
| COUNTER WEIGHT (kg)                     |   | 15587                        | 9500±6%                      | 4680±6%                                      |
| WINCH TYPE                              | Two Speed Hydraulically operated reversible, with Automatic braking system & built in planetary system.   |                              |                              |  |
| STANDARD ACCESSORIES                    |   |                              |                              |  |
| <b>BP41</b>                             | Hook & Boom winch, 5.5m boom with cable counter weight mechanism hydraulic track adjusters, Adequate lifting system, under guards   |                              |                              |  |
| <b>BP70</b>                             | Hook & Boom winches, counter wt. mechanism 6.2m boom with cables, hydraulic track adjusters, bottom guards (3 pieces), adequate lifting   |                              |                              |  |
| <b>BP100</b>                            | Hook and Boom Winches, Counter weight mechanism with 8.0m boom with wire cables. Hydraulic track adjusters, Adequate lighting system Integrated Hexagonal ROPS Cabin, Boom Angle Indicator, Boom Kick-out mechanism |                              |                              |  |



## Water Sprinklers



| Equipment             | <b>BWS70</b>   | <b>WS28-2</b>                         |
|-----------------------|--|---------------------------------------|
| Operating mass        | 1,34,000kg   | 53,700kg                              |
| Overall Dimension,mm  | <b>9710 X 5650 X 6470</b>                            | <b>7995 X 4344 X 3946</b>             |
| ENGINE Cummins        | <b>KTA38C</b>  | <b>BS6D140-1</b>                      |
| NET POWER (FHP)       | 883 HP @ 2050 rpm<br>(659 kW)                        | 375 HP @ 2100 rpm<br>(280 kW)         |
| CAPACITY(litres)      | 70000  | 28000                                 |
| TRANSMISSION          | BEML   | AVTEC CLT 754                         |
| TRAVEL SPEED(F/R)     | 5/1  | 5 /1                                  |
| FUEL TANK (litres)    | 1240   | 540                                   |
| BRAKES                | Front  | Air over hydraulics Dry Caliper Disc  |
|                       | Rear   | Air over hydraulics wet multiple Disc |
| WATER SYSTEM Capacity | 180cum/hr  | 110cum/hr                             |
|                       | Head   | 85m                                   |
|                       | Piping(S/D)  | 100/80                                |
|                       | Sprinkling   | Pressurised                           |
|                       | Spreading  | 21m                                   |
| GRAVITY SPRINKLING    | Through perforated manifold connected to tank bottom |                                       |
| NOZZLES               | Fish Tail type                                       | Fish Tail type                        |
| OPTIONAL              | Engine : QST30C                                      | Cummins NTA855C BIGCAM III            |
|                       | Mist System on BWS70                                 | Mist System                           |
|                       | Fire fighting attachment                             | Hose reel assembly                    |
|                       |  | Water Monitor assembly                |
|                       |  | Front sprinkling                      |

## Tyre Handler - BL14TH



|                                     |                       |  |                              |                  |
|-------------------------------------|-----------------------|--|------------------------------|------------------|
| Operating mass (Standard equipment) |                       | 20,250 kg                                |                              |                  |
| Overall Dimension (LxBxH)mm         |                       | 8360 X 2781 X 3330                       |                              |                  |
| ENGINE                              | Model & Type          | <b>BEML BS6D105-1</b>                    |                              |                  |
|                                     | Flywheel Power        | 94kW(126hp)@2000rpm                      |                              |                  |
| HYD. SYSTEM CAPACITY 195 ltrs       |                       | Relief Pressure(kg/cm <sup>2</sup> ) 140 |                              |                  |
| TRANSMISSION :                      |                       | Power Shift                              |                              |                  |
| Max. Speed :                        |                       | 31 kmph                                  |                              |                  |
| MAX WORK RANGE                      | Tyre Lift             | Tyre size                                | Height                       | Clamping         |
|                                     | (mm)                  | 3500kg                                   | 18X25-36X51                  | 3200mm 1420-3380 |
| Articulation                        | 25° each side         |  | Outer Turning radius: 7200mm |                  |
| Rotation                            | Hand Axial:360° cont. |  | Lateral:350° non cont.       |                  |

# **UNDERGROUND MINING EQUIPMENT**



## Side Discharge Loader



DGMS APPROVAL NO : 532 OF 2005 (Standard version)

DGMS APPROVAL NO : 650 OF 2012 (With Cable Reeler Drum)

|                              |   |                         |
|------------------------------|---|-------------------------|
| Description                  | <b>BL10C - SDL, BL10C - SDL (with Cable Reeler Drum)</b>                                  |                         |
| Operating Weight             | 8600 kg, 9200 kg (with Cable Reeler Drum)   |                         |
| Bucket Capacity              | 1.1 cum   |                         |
| Electrical System            |   |                         |
| Engine Motor                 | FLP Induction Motor DGMS Approved.  |                         |
| Rated Power                  | 48 kW, 55kW (with Cable Reeler Drum)  |                         |
| Rated Voltage                | 525 V +/-10%, 3 Phase, 50 Hz +/-5%  |                         |
| Rated Speed                  | 1485 rpm  |                         |
| Cables                       |   |                         |
| Trailing Cable               | FT7   |                         |
| Lighting and control         | PLC4  |                         |
| Control System               |   |                         |
| Head Lamp                    | 24 V AC   |                         |
| Audio-Visual Alarm           | 12 V DC   |                         |
| Fire Extinguisher            | Class of fire - B&C   |                         |
| Effective Jet Length         | 2-2.5 m   |                         |
| Hydraulic System             |   |                         |
| Hydraulic Pump               | Gear Triple pump  |                         |
| Capacity                     | 100 + 100 + 45 Lpm  |                         |
| Hydraulic Motor              |   |                         |
| Travel Drive                 | Axial Piston Motors with built-in Counter Balance Values and Planetary Reduction Gear Box |                         |
| Fan Drive                    | Gear Motor  |                         |
| Bucket Chain Drive           | Bi-directional Gerotor Motor  |                         |
| Under Carriage               |   |                         |
| Track Shoe Width             | 330mm (Type : Single / Triple Grouser)  |                         |
| Gradient                     | ± 14° (1 in 4) longitudinal ± 9.5° (1 in 6) lateral                                       |                         |
| Final Drive                  |   |                         |
| Drive Type                   | Hydraulic with Axial Piston Motor and Planetary Reduction Gear Box for each Track         |                         |
| Maximum Travel Speed         | 0.83 m/sec  |                         |
| Overall Dimensions mm        |   |                         |
| Overall Height               | 1900-2100 Overall Length - 4949±50 (5500 with Cable Reeler Drum)                          |                         |
| Minimum Discharge Height, mm | 490±10  | Overall Width - 1825±10 |
| Maximum Discharge Height, mm | 1984±10   |                         |



## Mine Cruiser



|  |  |                                       |
|--|--|---------------------------------------|
| Engine   | <b>Make / Model Perkins 1104C-44T</b>  |                                       |
| Cooling  | Liquid Cooled  |                                       |
| Power  | 63kW@2300rpm (Max. Gross Power : 74.5kW@2300rpm)   |                                       |
| Performance  | Speed 9 Km/Hr Low Speed / 23 Km/Hr High Speed  |                                       |
|  | Braking Speed on good road : 0.4g (depending on road surface)  |                                       |
| Weights : Payload :  | 2,000 Kg   |                                       |
| Machine weight,  | 7,000 Kg (Approx)  |                                       |
| GVW  | 9,000 Kg   |                                       |
| Overall Dimensions   | Length   | 6,807 mm                              |
|  | Width  | 2,000 mm                              |
|  | Max height-driver's cab  | 2,120 mm                              |
|  | Min. Ground clearance  | 250 mm                                |
| Turning Radius   | Cornerability 5 x 5 m  |                                       |
| Transmission   |  |                                       |
| Type   | Hydrostatic (Pump & Motor(s))  |                                       |
| Flame Proofing   | Dry Scrubber System, SABS and GME approved   |                                       |
| Intake manifold  | Steel, custom made, with cylinder head adaptor plate & flametrap   |                                       |
| Exhaust manifold & exhaust   | St. Steel (316) water-cooled system.   |                                       |
| Discharge Temperature  | 150 max Degr. C  | Surface Max. Temp. : 150 max. Degr. C |
| Starting system  | Hydraulic, with manual recharge of accumulator   |                                       |
| Alternator   | 12 Volt, Self exciting, fully flameproofed with SABS approval.   |                                       |
|  | 12 Volt, flameproof lights with 20 lux. at 10m, each   |                                       |
| Axles  | Planetary  |                                       |
| Front :  | Steer  |                                       |
| Rear :   | Rigid/Steer to achieve 5 x 5m cornerability  |                                       |
| Suspension   |  |                                       |
| Front :  | Coil springs with shocks   |                                       |
| Rear :   | Coil springs with shocks   |                                       |
| Tyres  | Front & Rear Tube (3 piece rim), Size 9.00 x 20  |                                       |
| Brakes   |  |                                       |
| Service - Axles  | All Wheel Brakes, totally enclosed internal Wet-Multi-Disc,<br>Hydraulic Pressure Applied with Accumulator Back-up |                                       |
| Emergency  | Spring Applied / Hydraulic Pressure Release (SAHR)   |                                       |
| Parking  | Same as Emergency  |                                       |
| Automatic brake applicator (ABA)-Neutral Brake - Hydrostatic braking |  |                                       |

## Battery Operated Mine Locomotive



|                    |  |
|--------------------|--|
| Description        | Battery Operated Mine Locomotive                         |
| Operating Capacity | 2, 3, 4, 6, 8 & 12 Tonne (Against Requirement)           |
| Track Gauge (mm)   | 610, 1005  |
| Locomotive type    | FLP / Non - FLP  |
| Suitable for       | Degree 3 Coal Gassy Mines & Metal Ferrous Mines          |
| Battery            | High Density C2 / C5 rating                              |
| Controls           | State - of - the - art PWM controls                      |
| Chassis            | Robust design with High Strength Steel split type design |
| Wheel & Axle       | High strength Alloy Steel                                |

## Granby Car



|             |   |
|-------------|---|
| Description | Granby Car                                      |
| Capacity    | 5, 5.4, 7.5 & 10 tonne (Other sizes on request) |
| Track Gauge | 610 mm, (for 5T), 1005 mm                       |

# CONSTRUCTION EQUIPMENT



## BD85



|  |   |                        |                            |            |           |                             |
|--|---|------------------------|----------------------------|------------|-----------|-----------------------------|
| Operating mass (Standard equipment with straight tilt dozer) | <b>24340kg</b>  |                        |                            |            |           |                             |
| Fuel tank refill capacity                                    | <b>420 Ltrs</b>   |                        |                            |            |           |                             |
| Overall Dimension (LxBxH) mm                                 | 5915 x 3460 x 3395 (Exhaust pipe)   |                        |                            |            |           |                             |
| ENGINE   | Model & Type  |                        | <b>BEML BS6D 125-1</b>     |            |           |                             |
|  | 6 inline, Diesel, 4 stroke, turbo-charged, direct injection, water cooled                       |                        |                            |            |           |                             |
|  | Flywheel Power  |                        | 172 kW (230 hp) @ 2000 rpm |            |           |                             |
|  | Max. draw bar pull  |                        | 40,000kg*                  |            |           |                             |
| TRAVEL SPEEDS (kmph)   | 1st   | 2nd                    | 3rd                        |            |           |                             |
| Forward  | 0-3.6   | 0-6.7                  | 0-11.8                     |            |           |                             |
| Reverse  | 0-4.2   | 0-8.1                  | 0-14.2                     |            |           |                             |
| TORQUE CONVERTER   | 3 element, single stage, single phase   |                        |                            |            |           |                             |
| TRANSMISSION   | Planetary power shift, 3 forward, 3 reverse   |                        |                            |            |           |                             |
| STEERING CLUTCH  | Wet, multiple disc, hydraulically actuated  |                        |                            |            |           |                             |
| FINAL DRIVE  | Spiral bevel gear, Double reduction   |                        |                            |            |           |                             |
| BRAKE  | Wet Contracting band, foot operated   |                        |                            |            |           |                             |
| UNDERCARRIAGE  | Grouser ht  | Ground Pressure        | Shoe Width & Nos           |            |           |                             |
|  | 65mm  | 0.67kg/cm <sup>2</sup> | 560mm, 41nos Each side     |            |           |                             |
| DIMENSIONS in mm   | Blade   |                        |                            |            |           |                             |
| DOZER BLADE TYPE   | Length  | Height                 | Max. Lift above            | Drop below | Max. tilt | Blade cap (m <sup>2</sup> ) |
| Straight tilt blade  | 3460  | 1380                   | 1350                       | 620        | 860       | 4.5                         |
| Angle blade  | 4260  | 1125                   | 1040                       | 740        | 600       | 4.31                        |
| Coal blade   | 4450  | 1540                   | 1625                       | 545        | -         | 10.10                       |
| SEMI-U   | 3810  | 1550                   | 1385                       | 620        | 860       | 7.5                         |
| STD :  | Straight tilt dozer with Joystick controls for work attachment, Electronic Display & ROPS Cabin |                        |                            |            |           |                             |
| OPTIONAL :   | AC with Heater, Multi Shank Ripper, ALS, AFSS, SU-Blade, Coal blade                             |                        |                            |            |           |                             |

NOTE : Usable pull will depend upon traction & weight of equipped tractor



|  |                |
|--|----------------|
| Operating mass (Standard equipment with angle dozer canvas canopy) | <b>21550kg</b> |
| Fuel tank refill Capacity  | <b>420ltrs</b> |
| Overall Dimensions (LxBxH) mm 5890 x 4260 x 3240 (Exhaust pipe)    |                |

|                      |                    |  |       |       |       |        |
|----------------------|--------------------|--|-------|-------|-------|--------|
| ENGINE               | Model & Type       | BEML BS6D 125-1  |       |       |       |        |
|                      |                    | 6 inline, Diesel, 4 stroke, turbo-charged, direct injection water cooled |       |       |       |        |
|                      | Flywheel Power     | 134 kW (180 hp) @ 1850 rpm   |       |       |       |        |
|                      | Max. draw bar pull | 19,600kg*  |       |       |       |        |
| TRAVEL SPEEDS (kmph) | 1st                | 2nd  | 3rd   | 4th   | 5th   |        |
|                      | Forward            | 0-2.4  | 0-3.4 | 0-5.2 | 0-7.4 | 0-10.0 |
|                      | Reverse            | 0-3.1  | 0-4.5 | 0-6.7 | 0-9.6 | NA     |

|                 |  |                         |                        |
|-----------------|--|-------------------------|------------------------|
| TRANSMISSION    | Helical gear, constant mesh, hand operated, 5 Forward, 4 Reverse |                         |                        |
| FINAL DRIVE     | Spur gear & Double reduction                                     |                         |                        |
| STEERING CLUTCH | Wet, multiple disc, hydraulic together with spring type Booster  |                         |                        |
| BRAKE           | Wet Contracting band   |                         |                        |
| UNDERCARRIAGE   | Pitch  | Ground Pressure         | Shoe Width & Nos       |
|                 | 2000mm   | 0.58 kg/Cm <sup>2</sup> | 560mm, 38nos Each side |

|                        |                         |        |            |            |            |                            |
|------------------------|-------------------------|--------|------------|------------|------------|----------------------------|
| DIMENSIONS in mm BLADE |                         |        |            |            |            |                            |
| DOZER TYPE             | Length                  | Height | Lift above | Drop Below | Max. tilt  | Blade cap(m <sup>3</sup> ) |
| Angle blade            | 4260                    | 1080   | 1260       | 530        | 500        | 3.55                       |
| Straight               | 3460                    | 1280   | 1175       | 610        | 735        | 4.10                       |
| Coal                   | 4450                    | 1540   | 1275       | 535        | (optional) | 10.10                      |
| STD :                  | Angle Dozer with Canopy |        |            |            |            |                            |
| Optional               | Multi Shank Ripper      |        |            |            |            |                            |

\* Note : Usable pull will depends upon traction weight of equipment.





|   |   |  |  |
|---|---|--|--|
| STD :   | Angle dozer with Joystick controls for work attachment, Electronic display & ROPS Cabin |  |  |
| Operating mass (Standard equipment with Angle dozer & ROPS Cabin) | <b>18830kg</b>  |  |  |
| Fuel tank refill capacity   | <b>320 Ltrs</b>   |  |  |
| Overall Dimensions  | 5360 x 3970 x 3050 mm (LxBxH)   |  |  |

|        |                    |  |  |
|--------|--------------------|--|--|
| ENGINE | Model & Type       | <b>BEML B6D125-1</b>                                       |  |
|        |                    | 6 inline, Diesel, 4 stroke, Water cooled, direct injection |  |
|        | Flywheel Power     | 123 kW (165 hp) @ 1850 rpm                                 |  |
|        | Max. draw bar pull | 28,000kg *   |  |

|                      |       |         |         |
|----------------------|-------|---------|---------|
| TRAVEL SPEEDS (kmph) | Range | Forward | Reverse |
|                      | 1st   | 0-3.9   | 0-5.0   |
|                      | 2nd   | 0-6.8   | 0-8.6   |
|                      | 3rd   | 0-10.9  | 0-13.7  |

|                  |  |                 |                        |
|------------------|--|-----------------|------------------------|
| TORQUE CONVERTER | 3 element, single stage single phase         |                 |                        |
| TRANSMISSION     | Planetary power shift, 3 forward, 3 reverse  |                 |                        |
| STEERING CLUTCH  | Wet, multiple disc, hydraulically actuated   |                 |                        |
| FINAL DRIVE      | Spur gear & Double reduction                 |                 |                        |
| BRAKE            | Wet, Contracting band with Hydraulic Booster |                 |                        |
| UNDERCARRIAGE    | Pitch  | Ground Pressure | Shoe Width & Nos       |
|                  | 1880mm                                       | 0.70kg/sq.cm    | 510mm, 39nos Each side |

|          |                                      |  |  |
|----------|--------------------------------------|--|--|
| CONTROLS | Joystick control for work attachment |  |  |
|          | Arm chair steering control           |  |  |

|                  |        |        |            |            |           |                            |
|------------------|--------|--------|------------|------------|-----------|----------------------------|
| DIMENSIONS in mm |        |        |            |            |           |                            |
| DOZER TYPE       | Length | Height | Lift above | Drop Below | Max. tilt | Blade cap(m <sup>3</sup> ) |
| Straight         | 3400   | 1150   | 1162       | 642        | 890       | 4.5                        |
| Angle            | 3970   | 1050   | 1250       | 545        | 400       | 3.24                       |
| Coal             | 4450   | 1540   | 1230       | 705        | –         | 10.10                      |
| SU               | 3400   | 1370   | 1344       | 584        | 830       | 5.0                        |

OPTIONAL : Multi Shank Ripper, AC with Heater, AFSS, Coal Blade, SU Blade

\*NOTE : Usable Pull will depend upon traction & weight of equipped tractor



## BD50



|   |         |
|---|---------|
| Operating mass (Standard equipment with Angle dozer)            | 12170kg |
| Fuel tank refill capacity                                       | 240ltrs |
| Overall Dimension (L xBxH) mm 4700 X 3350 X 2870 (Exhaust pipe) |         |

|                      |   |                         |         |
|----------------------|---|-------------------------|---------|
| <b>ENGINE</b>        | <b>Model &amp; Type</b> <b>BEML BS6D105-1</b>               |                         |         |
|                      | 6 inline, Diesel, 4 stroke, turbo-charged, direct injection |                         |         |
|                      | Flywheel Power  | 67 Kw (90hp) @ 1750 RPM |         |
|                      | Max. draw bar pull  | 8280 kg*                |         |
| <b>TRAVEL SPEEDS</b> | Range   | Forward                 | Reverse |
| km/h                 | 1st   | 0-2.5                   | 0-3.2   |
|                      | 2nd   | 0-3.5                   | 0-5.2   |
|                      | 3rd   | 0-5.5                   | 0-8.0   |
|                      | 4th   | 0-9.4                   | -       |

|                        |   |                 |                        |
|------------------------|---|-----------------|------------------------|
| <b>TRANSMISSION</b>    | Spur Gear, Selective Sliding, hand operated |                 |                        |
| <b>STEERING CLUTCH</b> | Dry, multiple disc, Spring Booster type     |                 |                        |
| <b>FINAL DRIVE</b>     | Spur gear, Double reduction                 |                 |                        |
| <b>BRAKE</b>           | Dry Contracting Band, Hand operated         |                 |                        |
| <b>UNDERCARRIAGE</b>   | Pitch                                       | Ground Pressure | Shoe Width & Nos       |
|                        | 1600mm                                      | 0.73kg/sqcm     | 400mm, 38nos Each side |

### DIMENSIONS in mm

|                   |  |        |            |            |          |                |
|-------------------|--|--------|------------|------------|----------|----------------|
| <b>DOZER TYPE</b> | Length                                 | Height | Lift above | Drop Below | Max Tilt | Blade cap (m³) |
| Straight          | 2760                                   | 990    | 930        | 445        | 250      | 2.0            |
| Angle             | 3350                                   | 865    | 1050       | 380        | 250      | 2.19           |
| <b>STD</b>        | Angle dozer with Canopy                |        |            |            |          |                |
| <b>OPTIONAL :</b> | Multi Shank Ripper, Steel Cabin, Winch |        |            |            |          |                |

\*NOTE : Usable Pull will depend upon traction & weight of equipped tractor



|                                |  |
|--------------------------------|--|
| Operating mass (Std equipment) | 30,800kg   |
| Overall Dimension (LxBxH)mm    | 10860 x 3190 x 3320 (Overall height Top of boom) |
| Net Power (FHP)                | 147kW(197HP) @1550rpm                            |

|  |   |                        |                        |               |
|--|---|------------------------|------------------------|---------------|
| ENGINE                                   | Make & Model <b>BEML BS6D125</b>                                |                        |                        |               |
|  | 6 inline, Diesel, 4 stroke, Turbocharged, Direct Injection      |                        |                        |               |
|  | Flywheel Power  | 147kW(197HP) @ 1550rpm |                        |               |
| HYDRAULIC SYSTEM                         | Positive control system with two modes                          |                        |                        |               |
| HYDRAULIC PUMP                           | Variable Displacement piston type double pump                   |                        |                        |               |
| RELIEF PRESSURE<br>(kg/cm <sup>2</sup> ) | Boom/Arm/Bucket   | Swing                  | Travel                 | Pilot         |
|  | 320   | 275                    | 320                    | 30            |
| HYD. CYLINDER<br>(Nos. x Dia x length)   | Boom  | Arm                    | Bucket                 |               |
|  | 2X140X1480  | 160x1645               | 140X1290               |               |
| TRAVEL SPEED                             | 3.2kmph   |                        | Swing Speed : 9.4rpm   |               |
| DRIVE TYPE                               | Fully hydrostatic with two stage planetary reduction            |                        |                        |               |
| UNDERCARRIAGE                            | Track Length  | Track Gauge            | Shoe Width & Nos       | Draw bar pull |
|  | 4045 mm   | 2580 mm                | 610mm, 51nos Each side | 21,500kg      |
| STANDARD EQUIPMENT                       | Boom  | Arm                    | Bucket                 |               |
|  | 6470 mm   | 3130 mm                | 1.57cum                |               |
| MAX WORK RANGE                           | Dig ht  | Dump ht                | Dig reach              | Dig Depth     |
|  | 10150   | 7100                   | 10920                  | 7320          |
| FORCES (kg)                              | Dig Force: 17200  |                        | Arm Force: 13000       |               |
| WORK ATTACHMENT                          | Soft touch joystick pilot controls with accumulator system      |                        |                        |               |
| OPTIONAL                                 | Arms (2.2, 2.55 & 4.02) m                                       |                        |                        |               |
|  | Buckets (0.5-2cum), Trapezoidal (0.9cum) slope finish (0.35cum) |                        |                        |               |
|  | Ripper Bucket (0.9cum), Clamshel Bucket, Hyd. Rockbreaker       |                        |                        |               |
|  | Lightduty bucket and narrow bucket                              |                        |                        |               |



|                                     |   |
|-------------------------------------|---|
| Operating mass (Standard equipment) | 22,800kg                                  |
| Net Power (FHP)                     | 110kW(148HP) @2000rpm                     |
| Overall Dimension (LxBxH)mm         | 10000X2990X3200 (Overall ht. Top of boom) |

|                               |  |                            |                             |                      |
|-------------------------------|--|----------------------------|-----------------------------|----------------------|
| <b>ENGINE</b>                 | <b>Make &amp; Model</b>  | <b>BEML BS6D105-1</b>      |                             |                      |
|                               | 6 inline, Diesel, 4 stroke,  | Turbocharged, Water Cooled |                             |                      |
|                               | Flywheel Power   | 110kW(148HP) @ 2000rpm     |                             |                      |
| <b>HYDRAULIC SYSTEM</b>       | Two mode system  |                            |                             |                      |
| <b>HYDRAULIC PUMP</b>         | 2nos variable Displacement axial piston pump                         |                            |                             |                      |
| <b>RELIEF PRESSURE</b>        | <b>Boom/Arm/Bucket</b>   | <b>Swing</b>               | <b>Travel</b>               | <b>Pilot</b>         |
| (kg/cm <sup>2</sup> )         | 320  | 297                        | 320                         | 30-36                |
| <b>HYD. CYLINDER</b>          | <b>Boom</b>  | <b>Arm</b>                 | <b>Bucket</b>               |                      |
| (Nos X Dia X length)          | 2X130X1234   | 140X1628                   | 130X989                     |                      |
| <b>TRAVEL SPEED</b>           | 3.0km/hr   | Swing Speed : 13rpm        |                             |                      |
| <b>DRIVE TYPE</b>             | Hydrostatic with two stage planetary reduction                       |                            |                             |                      |
| <b>UNDERCARRIAGE</b>          | <b>Track Length</b>  | <b>Track Gauge</b>         | <b>Shoe Width &amp; Nos</b> | <b>Draw bar pull</b> |
|                               | 3445 mm  | 2380 mm                    | 610mm, 47 nos Each side     | 16145kg              |
| <b>STANDARD EQPT</b>          | <b>Boom</b>  | <b>Arm</b>                 | <b>Bucket</b>               |                      |
|                               | 5850 mm  | 2500 mm                    | 1.0cum (backhoe)            |                      |
| <b>MAX WORK RANGE</b>         | <b>Dig ht</b>  | <b>Dump ht</b>             | <b>Dig reach</b>            | <b>Dig Depth</b>     |
| (mm)                          | 8970   | 6200                       | 9510                        | 6170                 |
| <b>FORCES (kN)</b>            | Dig Force: 125   |                            | Arm Force: 120              |                      |
| <b>WORK ATTACHMENT</b>        | Feather touch joystick pilot controls with accumulator system        |                            |                             |                      |
| <b>OPTIONAL Arms(m)</b>       | Long(3.045), Extra long(3.5), Short(2.0)                             |                            |                             |                      |
| <b>Buckets(m<sup>3</sup>)</b> | Clamshell(0.6 & 1.2) Trapezoidal (0.5), Slope finishing (0.35)       |                            |                             |                      |
|                               | Ripper (0.56), Super long (0.64 & 0.44), Light duty (1.14 & 1.26)    |                            |                             |                      |
| <b>Others:</b>                | Single shank ripper, Three shank ripper, Hydraulic rock breaker,     |                            |                             |                      |
|                               | Track shoes 500, 710 & 810, A/C, Heater, High rise cabin,            |                            |                             |                      |
|                               | Front windshield Guard, Superlong fronts (for 12.2 m & 18.3 m reach) |                            |                             |                      |



# BE75



|                                     |                  |
|-------------------------------------|------------------|
| Operating mass (Standard equipment) | 7500kg           |
| Fuel tank refill capacity           | 122ltrs          |
| Overall Dimension (LxBxH)mm         | 5850X 2280X 2615 |

|  |   |   |                        |               |
|--|---|---|------------------------|---------------|
| <b>ENGINE</b>                              | <b>Model &amp; Type</b>   | <b>KOEL 4R 1040NA</b>   |                        |               |
|  |   | 4 inline, Diesel, 4 stroke, Naturally Aspirated, Water Cooled |                        |               |
|  | Flywheel Power  | 41.9kW(57HP) @ 2000rpm  |                        |               |
| <b>HYDRAULIC SYSTEM</b>                    | CLSS  | Capacity: 100ltrs   |                        |               |
| <b>HYDRAULIC PUMP</b>                      | Variable displacement axial piston pump + gear pump                         |   |                        |               |
| <b>RELIEF PRESSURE (kg/cm<sup>2</sup>)</b> | Boom/Arm/Bucket   | Swing   | Travel                 |               |
|  | 250   | 130   | 250                    |               |
| <b>HYD. CYLINDER</b>                       | Boom  | Arm   | Bucket                 |               |
| (Dia X Length)                             | 120X830   | 100X885   | 90X685                 |               |
| <b>TRAVEL SPEED</b>                        | 4.4kmph   | Swing Speed : 11.8rpm   |                        |               |
| <b>DRIVE TYPE</b>                          | Two speed hydrostatic with axial piston motor                               |   |                        |               |
| <b>UNDERCARRIAGE</b>                       | Track Length  | Gauge   | Shoe Width & Nos       | Draw bar pull |
|  | 2060  | 1700  | 450mm, 40nos Each side | 5680 kg       |
| <b>STANDARD EQUIPMENT</b>                  | Boom  | Arm   | Bucket                 |               |
|  | 3710  | 1650  | 0.3cum (backhoe)       |               |
| <b>MAX WORK RANGE</b>                      | Dig ht  | Dump ht   | Dig reach              | Dig Depth     |
| (mm)                                       | 7120  | 4995  | 6225                   | 4090          |
| <b>FORCES (kN)</b>                         | Dig Force: 48.3   |   | Arm Force: 37.4        |               |
| <b>WORK ATTACHMENT</b>                     | Feather touch hand operated joystick pilot controls with accumulator system |   |                        |               |
| <b>OPTIONAL</b>                            | Hydraulic rock breaker, Front cab guard                                     |   |                        |               |

## Attachments

---

**BE75**  
With Rock Breaker

---



---

**BE220G**  
With Clamshell Bucket

---



---

**BE220G**  
With Highrise Cabin  
for all round visibility

---



---

**BE220G**  
With Short boom  
for tunnel Applications

---



---

**BE220G**  
With Longreach boom & arm  
L: 12.2m & 18.3m

---





|                                     |                           |
|-------------------------------------|---------------------------|
| Equipment                           | BL30-1                    |
| Operating Mass (Standard equipment) | 18000 kg                  |
| Gross Power                         | 165 kW (225 hp)@ 2300 rpm |
| Overall Dimension (LxBxH)mm         | 8000X3086X3458            |
| Bucket Capacity                     | 3.1 cum                   |

|                               |  |                           |                   |               |
|-------------------------------|--|---------------------------|-------------------|---------------|
| ENGINE                        | Make & Type  | Ashok Leyland BS- IV      |                   |               |
|                               | 6 inline, Diesel, 4 stroke, Turbocharged, Intercooled CRS engine                   |                           |                   |               |
|                               | Gross Power  | 165 kW (225 hp) @ 2300rpm |                   |               |
| TRANSMISSION                  | Powershift   | 4F / 3R                   |                   |               |
| TRAVEL SPEED                  | First  | Second                    | Third             | Fourth        |
|                               | F/R  | 6/7                       | 12/13             | 24/25<br>37/- |
| HYD. SYSTEM                   | Pump Cap. 240l/min   | RELIEF PRESSURE : 230 bar |                   |               |
| HYD. CYLINDER<br>(DiaXlength) | Lift   | Dump                      | Steering          |               |
|                               | 2X140X769  | 1X200X485                 | 2X90X442          |               |
| TYRES                         | 23.5X25-20 PR,Tubeless   |                           |                   |               |
| FUEL TANK                     | 300 lts  |                           |                   |               |
| LOADER                        | Dump clearance   | Operating height          | Dig depth         | Dump angle    |
|                               | 2782   | 5430                      | 385               | 45°           |
| ARTICULATION                  | 38 +/- 2 deg Each side   |                           |                   |               |
|                               | Traction : 175 kN  |                           | Breakout : 198 kN |               |
| CABIN                         | Steel Cabin, spacious  |                           |                   |               |
|                               | with 2 doors and safety glass all around   |                           |                   |               |
| OPTIONAL                      | Bucket 2, 2.5, 2.7and 3.4 cum capacities<br>(based on density of material handled) |                           |                   |               |



|                                     |   |                           |           |            |
|-------------------------------------|---|---------------------------|-----------|------------|
| Equipment                           | BL200-1   |                           |           |            |
| Operating Mass (Standard equipment) | 10500 kg  |                           |           |            |
| Overall Dimension (LxBxH) mm        | 6975 X 2438 X 3325  |                           |           |            |
| Bucket Capacity                     | 1.7 cum   |                           |           |            |
| ENGINE                              | Make & Type   | Ashok Leyland-BSIV        |           |            |
|                                     | 6 inline, Diesel, 4 stroke, Turbocharged, Water Cooled, direct injection                        |                           |           |            |
|                                     | Gross Power   | 99kW(133HP) @ 2300rpm     |           |            |
| TRANSMISSION                        | Powershift  | 2F / 1R                   |           |            |
| TRAVEL SPEED                        | First   | Second                    |           |            |
|                                     | F/R   | 6/22                      | 36        |            |
| HYD. SYSTEM                         | Pump Cap. 150l/min  | RELIEF PRESSURE : 210 bar |           |            |
| HYD. CYLINDER                       | Lift  | Dump                      | Steering  |            |
| (DiaXlength)                        | 2X120X700   | 1X130X474                 | 2X70X450  |            |
| TYRES                               | 14X25-20PR (L3) Tubeless  |                           |           |            |
| FUEL TANK                           | 170 l   |                           |           |            |
| LOADER                              | Dump clearance  | Operating height          | Dig depth | Dump angle |
|                                     | 2600<br>(upto cutting edge)   | 4775                      | 250       | 45°        |
| ARTICULATION                        | 38° Each side   |                           |           |            |
|                                     | Traction : 9880 kg  | Breakout : 9900 kg        |           |            |
| CABIN                               | Steel Cabin, spacious, comfortable<br>with 2 doors and safety glass all around                  |                           |           |            |
| OPTIONAL                            | Bucket 1.2, 1.5, 2.3, 2.5, 3.0 and 3.2 cum capacities<br>(based on density of material handled) |                           |           |            |
|                                     |   |                           |           |            |
|                                     |   |                           |           |            |
|                                     |   |                           |           |            |
|                                     |   |                           |           |            |





|                             |   |
|-----------------------------|---|
| EQUIPMENT                   | <b>BG405A</b>   |
| OPERATING MASS              | 11500 kg  |
| ENGINE                      | ASHOK LEYLAND BSIV  |
| GROSS POWER                 | 96KW( 133 hp)@2300rpm   |
| FRAME                       | Articulated   |
| TRANSMISSION                | ZF  |
| TRAVEL SPEEDs               | 6F/3R   |
| SPEED (kmph) max (F/R)      | 48 / 32   |
| min (F/R)                   | 5.6 / 5.9   |
| DRAW BAR PULL (kg)          | 6256  |
| STEERING ANGLE              | 40° each side   |
| TURNING RADIUS(mm)          | 6500  |
| MOULD BOARD (L x H x T), mm | 2970 X 540 X 20   |
| BLADE max lift above        | 400 mm  |
| max drop below              | 400 mm  |
| Max shoulder reach(L/R)     | 1600 / 1650 mm  |
| Max bank cut angle          | 90°   |
| TYRES                       | 11.00 X 20 - 18PR   |
| BRAKES                      | Foot operated, Wet multiple disc<br>Accumulator assisted hyd. disc. |
| OVERALL DIM. (LWH),mm       | 7835X2000 (Tyre end to end) x 3400                                  |
|                             |   |
|                             |   |
|                             |   |
|                             |   |
|                             |   |



| EQUIPMENT                    | BG605A   | BG605I   |
|------------------------------|--|--|
| OPERATING MASS               | 15,500 kg  | 13,630kg   |
| ENGINE                       | ASHOK LEYLAND- BSV   | ASHOK LEYLAND- BSIV                                      |
| GROSS POWER                  | 118 kW @2200 rpm   | 118 kW @2200 rpm   |
| FRAME                        | Articulated  | Rigid  |
| TRANSMISSION                 | Power Shift  | Power Shift  |
| TRAVEL SPEEDs                | 6F/3R  | 6F/3R  |
| SPEED (kmph)max (F/R)        | 48.5/ 48.2   | 48.5/ 48.2   |
| min (F/R)                    | 7.2 / 7.6  | 7.2 / 7.6  |
| DRAW BAR PULL (kg)           | 7500   | 7210   |
| STEERING ANGLE               | 40° each side  | 40° each side  |
| TURNING RADIUS (mm)          | 7400   | 11000  |
| MOULD BOARD (L x H x T), mm  | 3665 X 540 X 20  | 3665 X 540 X 20  |
| CUTTING EDGE (L x H x T), mm | 914 X 152 X 27   | 914 X 152 X 27   |
| BLADE max lift above,mm      | 400  | 400  |
| max drop below,mm            | 500  | 570  |
| Max shoulder reach(L/R),mm   | 1670/1955  | 1670/1955  |
| Max bank cut angle           | 90°  | 90°  |
| TYRES                        | 14.00 X 24 - 16PR(Tube Type)   | 14.00 X 24 - 16PR(Tube Type)                             |
|                              | Traction type  | Traction type  |
| BRAKES                       | Foot operated, Oil disc brakes                                       | Foot operated, Shoe type                                 |
|                              | Air actuated on 4 rear wheels  | Air over Hydraulic Brakes actuated on all 4 rear wheels. |
| OVERALL DIM. (L x W x H), mm | 8980 x 2524 (Tyre end to end) x 3679                                 | 9060x2375 (Tyre end to end) x3420                        |
| OPTIONAL: BG605A<br>BG605I   | Scarifier, Front Dozer Blade, ROPS Cabin, Tyre Inflation Kit, Ripper |  |

# AFTER SALES SERVICE

BEML Limited has nationwide marketing network for sales and service of Mining & Construction Equipment and parts spread all over India. Apart from the domestic market, BEML has presence in more than 68 countries covering Asia, Africa, Middle East, SAARC, Latin America and other neighboring countries. A dedicated International Business Division is working tirelessly to cater to the need of the global customers.

## APPLICATION ENGINEERING

BEML offers application engineering to its customers, which includes preparation of pre feasibility reports, equipment selection studies, total fleet optimization solutions and customization of equipment.

## MAINTENANCE CONTRACTS

BEML offers various maintenance contracts such as MARC, AMC/FMC, ASC, Guaranteed Spares Contract, Cost Cap Contract to cross section of customers who derive the following advantages:

- Improved Reliability
- Higher Equipment Availability
- Pre-determined Expenditure over the Contract Period
- Reduces unscheduled breakdown
- Availability of expertise at site

## MAINTENANCE AND REPAIR CONTRACT (MARC)

It is recommended for green field projects. BEML shall supply parts and maintain the equipment duly conducting running Repairs, schedule maintenance, major repairs and overhauls during the contract period. Predictive maintenance for major aggregates shall be carried out, as required.

## ANNUAL MAINTENANCE CONTRACT (AMC) / FULL MAINTENANCE CONTRACT (FMC)

It is recommended for the existing/running projects. BEML shall supply parts and supervise maintenance & repair of equipment. BEML staff will supplement the Customer by providing expertise.

## ANNUAL SERVICE CONTRACTS (ASC)

BEML has been offering Annual Service Contracts, in which customers can avail specific number of Service Engineer's visit each year, depending upon the fleet of equipment. These visits can be planned on specific dates to suit the customer requirement to ensure better performance and availability of equipment.

In addition to the above, BEML also offers Guaranteed Spares contract & Cost Cap contracts to suit to the specific requirement of customers.

## REHABILITATION

BEML Service network has been executing a variety of flexible, custom-made Rehabilitation of equipment, after their reliability starts deteriorating with lesser productive hours or at the end of first-life when most of the components need overhaul. As required by customers varieties of rehabilitation programs are in vogue such as mid-life overhaul, reliability-improvement-repairs, major & minor rehabilitation, Extended life program etc. BEML offers Rehabilitation Services either at Customer's site or at BEML's Service Centres as per the requirement of customers.

## REGIONAL OFFICES

### Bangalore

4<sup>th</sup> Floor, Unity Building, J.C. Road  
Bangalore - 560002  
Karnataka

T + 91 9741351588  
E-mail : mg@beml.co.in

### Bilaspur

1-A, Industrial Area, Sector-C, Sirgitti  
Bilaspur 495 223  
Chhattisgarh

T + 91 7752 252745, 252598  
F + 91 7752 252065  
E-mail : mv@beml.co.in

### Neyveli

F-4, Rajendraprasad Road,  
Block-27, Neyveli - 607 803  
Tamil Nadu

T/F + 91 4142 268517  
T + 91 4142 265517 / 229392  
E-mail : ma@beml.co.in

### Dhanbad

Mouza-Kangalo, Amaghata  
Govindpur, KG Ashram Post, Dhanbad  
Jharkhand - 828 109

T + 91 94711 92023  
E-mail : mf@beml.co.in

### Hyderabad

3-6-114, Street No. 18, Himayat Nagar  
Hyderabad - 500 029  
Telangana

T + 91 40 2322 7032 / 94907 93117  
F + 91 40 23221794  
E-mail : m.hyderabad@beml.co.in

### Kolkata

35/1A, Taratala Road  
Kolkata - 700 088  
West Bengal

T + 91 33 24015285 / 87 / 98 / 99  
F + 91 33 24015288  
E-mail : m.kolkata@beml.co.in

### Mumbai

32A, Bazar Road  
Near Jain Mandir, Bandra (West), Mumbai  
Maharashtra - 400 050

T + 91 22 26431875 / 26435675  
F + 91 22 26423929  
E-mail : rm.mumbai@beml.co.in

### Nagpur

No. 33, Cement Road,  
Shivaji Nagar,  
Nagpur - 440 010, Maharashtra

T + 91 712 2248435, 2248343  
F + 91 712 2249997  
E-mail : mn@beml.co.in

### New Delhi

Flet E,F,G,H, 'Vendana' 11th Floor  
11, Tolstoy Marg, Connaught Place  
New Delhi - 110 001

T + 91 11 23443511/23443528 / 2331 6500  
F + 91 11 2332 5085  
E-mail : nr@beml.co.in

### Ranchi

208/D-1, Bhagirethi, (Behind NCC Campus)  
Rameshwaram Colony, Bariatu Road  
Ranchi, Jharkhand - 834 009

T + 91 651 2540710 / 94311 08531  
E-mail : mr@beml.co.in

### Sambalpur

BEML Complex, NH-6, Panchagachhia  
Baraipalli Post, Sambalpur 768 006  
Odisha.

T + 91 663 2521604 / 2521389  
E-mail : mb@beml.co.in

### Singrauli

PB No.5, Jhingurdha Colliery,  
Singrauli - 486 889,  
Madhya Pradesh.

T + 91 7805 272668 / 272318  
F + 91 7805 272282  
E-mail : rm.singrauli@beml.co.in

[www.bemlindia.in](http://www.bemlindia.in)



## DISTRICT OFFICES

|  |   |
|--|---|
| <b>Ahmedabad</b><br>99/100, BEML HOUSE, 2nd Street, Azad Society,<br>Ambawadi, Ahmedabad - 380 015, Gujarat                            | T + 91 79 26445523 / 94264 13620<br>F + 91 79 26423950<br>E-mail : m.ahmedabad@beml.co.in |
| <b>Asansol</b><br>3, Burnpur Road, Asansol - 713 304<br>West Bengal  | T + 91 341 2252480<br>F + 91 341 2250601<br>E-mail : mca@beml.co.in                       |
| <b>Bacheli</b><br>Behind Central Stores of NMDC Ltd., Depot 5,<br>Bacheli - 494 553, Chhattisgarh,                                     | T/F + 91 7857 230005<br>E-mail: rm.bacheli@beml.co.in                                     |
| <b>Bhilai</b><br>Room No. 22/C, BSP Expansion Building,<br>Near Ispat Bhavan, Bhilai - 490 001 Chhattisgarh,                           | T + 91 788 2223880<br>F + 91 788 2221652<br>E-mail : rmb@beml.co.in,                      |
| <b>Bhubaneswar</b><br>252/A, Lewis Road<br>Bhubaneswar - 751 014, Odisha   | T + 91 674 2434427 / 99373 83950<br>E-mail : mbb@beml.co.in                               |
| <b>Chandrapur</b><br>Memidwar, Tiles Factory Compound,<br>Ghugus Road, Padoli,<br>Chandrapur - 442 406 Maharashtra.                    | T + 91 7172 287230<br>F + 91 7172 287560<br>Email : mnc@beml.co.in                        |
| <b>Chennai</b><br>Flat No. 10, Supriya Estates<br>No. 3, Sterling Road, Nungambakkam<br>Chennai - 600 034, Tamil Nadu                  | T + 91 44 28220844<br>F + 91 44 28257319<br>E-mail : rm.chennai@beml.co.in                |
| <b>Guwahati</b><br>No. 11, Ward 43, Hengrabari Road<br>Ganesh Puri, Dispur<br>Guwahati - 781 006, Assam                                | T + 91 361 2232966<br>F + 91 361 2232967<br>E-mail: rm.guwahati@beml.co.in                |
| <b>Hospet</b><br>No. 1431, Manjunatha Complex<br>Bhegar Singh Nagar, Opp. KSSIDC Indl. Estate<br>Dam Road, Hospet - 583 203, Karnataka | T / F + 91 8394 230172<br>E-mail:rm.hospet@beml.co.in                                     |
| <b>Jammu</b><br>62C, Block D/C, Gandhi Nagar,<br>Jammu Tawi - 180 004, Jammu and Kashmir.  | F + 91 191 2459437<br>F + 91 191 2430447<br>E-mail: mjj@beml.co.in                        |
| <b>Kothagudem</b><br>Old Project Planning Department,<br>Near SCCL Corporate Office,<br>Kothagudem - 507 101, Telangana                | T + 91 8744 245572<br>F + 91 8744 245530<br>E-mail: rm.kothagudem@beml.co.in              |
| <b>Leh</b><br>174-B, (Near Royal Enfield Showroom)<br>Housing Colony, Leh, Ladakh - 194 101  | T + 91 1982 258828 94198 71008<br>E-mail: mli@beml.co.in                                  |
| <b>Ramagundam</b><br>Near SSCL TTC, Jawahar Nagar<br>Behind CISF Camp, Godavarihani - 505 209<br>Peddapalli Dist., Telangana           | T + 91 8728 248299 / 94408 58441<br>E-mail : mhr@beml.co.in                               |
| <b>Udaipur</b><br>20-B, Uchhab Bhavari, Bedla Road<br>Fatehpura, Udaipur - 313 001, Rajasthan.   | T + 91 294 2452054<br>E-mail : mwu@beml.co.in   |
| <b>Visakhapatnam</b><br>No.8-45-11, 4th Lane, Vidyanagar<br>Chinna Waltair Colony<br>Visakhapatnam - 530 003, Andhra Pradesh           | T/F + 91 891 2754608 / 83320 54590<br>E-mail : rm.vizag@beml.co.in                        |

## ACTIVITY CENTRES

### **Bhopal**

Ground Floor, Hall No. 1, Chittod Complex,  
Zone-1, Maharanapratap Nagar (MP Nagar)  
Bhopal - 462 011, Madhya Pradesh

T + 91 755 2550711 / 8989458753

E-mail: [mnh@beml.co.in](mailto:mnh@beml.co.in)

---

### **Panjim**

BEML Limited, 5/4, Victor Building, Fontanhas  
Mala, Panjim - 403 001, Goa

T + 91 832 2225135 / 7798687178

---

### **Itanagar**

C/o. Tobom Riba, H-Sector, Papum  
Itanagar - 791 113, Arunachal Pradesh

T + 91 94029 34205 / 88372 15852

E-mail: [mcgi@beml.co.in](mailto:mcgi@beml.co.in)

---

### **Kochi**

No. 39/2122, Chittoor Road,  
Ernakulam South, Kochi - 682 016

T + 91 484 2375138

E-mail: [rm.kochi@beml.co.in](mailto:rm.kochi@beml.co.in)

---

### **Maihar**

Maihar, Madhya Pradesh

T + 91 79875 53768

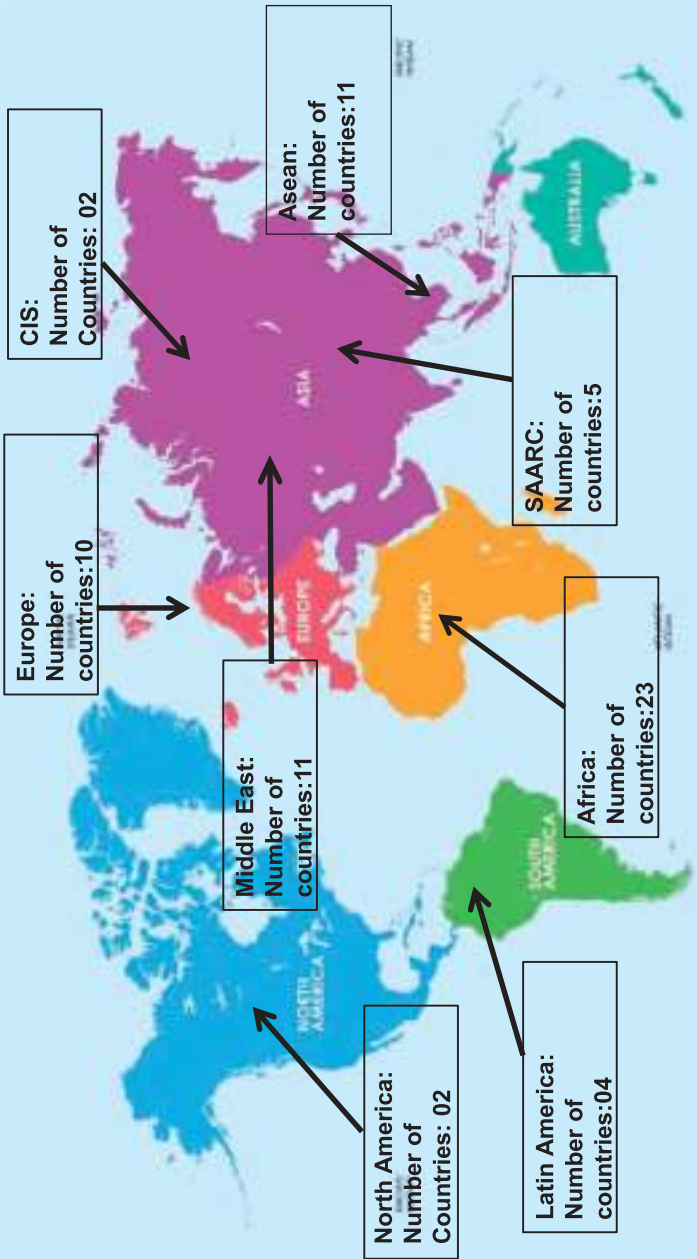
---

### **Silapathar**

Surya Valika, Amritpur, Silapathar,  
Assam - 787 059

---

# BEML's Global Presence



- Exported over 1200 equipment to 68 countries
- Defence Products Exported to Israel, Suriname, Honduras & Bhutan.
- Railway Products exported to Sri Lanka and Bangladesh
- Mining & Construction products across the globe

# बी ई एम एल लिमिटेड

## BEML LIMITED

Schedule 'A' Company under Ministry of Defence, Govt. of India.

### BUSINESS NETWORK

#### CORPORATE OFFICE

BEML Soudha, 23/1, 4th Main,  
S.R. Nagar, Bangalore-560 027  
T + 91 80 22963240, 22963250  
F + 91 80 22963279/516/280/164  
E-mail : office.cpd@beml.co.in  
corpcomm@beml.co.in

#### MARKETING DIVISION

5th Floor, Unity Building  
J C Road, Bangalore - 560 002  
T + 91 80 22963501/02/07/510/540  
F + 91 80 22963541  
Email : m@beml.co.in  
mmd@beml.co.in

#### INTERNATIONAL BUSINESS DIVISION

Flat No. E,F,G,H, "Vandana" 11th Floor  
11, Tolstoy Marg, Connaught Place  
New Delhi - 110 001  
T + 91 11 23316500  
F + 91 11 23325085  
Email : mx@beml.co.in



- ★ Corporate Office
- ★ Manufacturing Plants
- Regional Offices
- ▲ District Offices
- ★ Activity Centres
- International Business Division

- ★ Engineers at Pit Head
- ★ Mother depots at KGF and Mysore
- ★ Parts Depot at Regional and District Offices
- ★ Service Centers at Delhi, Bilaspur, Kolkata, Singrauli, Hyderabad

2020