

DISD

Wheel Loaders

SD300E / SD300 / SD200



DISD

No. 1088, Xincheng Street, Muping Economic Developing Zone
Yantai Shandong 264100 China
Tel: +86-535-638-2000 Fax: +86-535-638-2004

<https://www.tractormanualpdf.info/>

Exceeding Expectations while Bearing High-load

SD300E/SD300/SD200 has set out to perfectly integrate world class technologies with a new low-speed engine creating a higher level of efficiency to save fuel while maintaining a level of power that will exceed your expectations.

Features of DISD wheel loader

- Stronger breakout force and tractive force, reflecting excellent performance in a high-load working environment.
- Ideal operating speed and 40° steering angle, sharply improving work efficiency.
- Low-speed engine, saving more fuel for the device.

- Reasonable matched top-end technology, ensuring a more reliable, durable and efficient device.
- Noise reduction technology in line with international standards, providing operator with physical and mental protection, while bolstering work efficiency.
- Industry leading cooling system, offering a guarantee for continuous and uninterrupted work under high temperatures.
- Streamlined appearance and wide operating room, representing an international brand standard.

SD300E

- Doosan DE08TIS engine is mounted. Excellent performance and good quality.
- Smoother gear shift with ZF 4 shift transmission. Very well proven and best quality transmission.
- SD300E has an optional tropical high quality 1 layer aluminum radiator.

<https://www.tractormanualpdf.info/>

High Efficiency & Super Operating Performances

Fast Operating Speed
Significantly improved work progress, reduced work time, and reached excellent perfectly balanced for optimal work efficiency.



ZF transmission (optional)
Full automatic transmission for streamlined speed change with four forward gears and three backward gears. (SD300E)



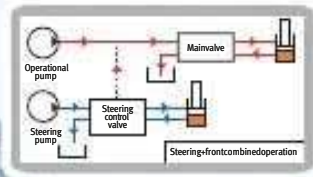
Excellent Performance for The Best Job

SD300E / SD300 / SD200 features powerful performance under poor working conditions with high efficiency and fuel saving operation. Well integrated high quality main components make it possible.

Tippling load
Tipping load of Doosan equipment greater than products from competitors for realizing stable digging work.



Tropical radiator
Tropical radiator applied to SD300E for allowing operation in tropical zones such as deserts in the Middle East, and keeping its performance high.



Combined Loop
Reducing oil consumption and improving cooling performance. (SD300E, SD300)



Features of DISD wheel loader

Fuel saving and environment friendly low-speed engine, satisfying Tier-II emission standards.

- * Doosan DE08TIS engine (SD300E) ▶
- * Weichai engine (SD300, SD200) ▶▶



Strong Breakout Force
Released through the best combination of hydraulic systems, under any working conditions, to create outstanding results.



Traction force
Traction force far more excellent than products from competitors allowing exercise of powerful force during operation.

<https://www.tractormanualpdf.info/>



Rearward Visual Field broadened by 20%

The rear end of the device adopts streamline design which largely broadens the rearward visual field of the operator, improving not only the work efficiency but also safety.

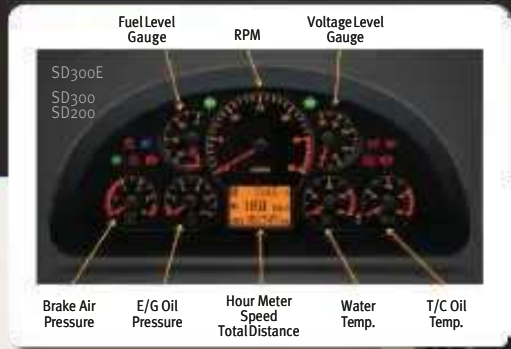


Rear Wiper
In case of rain, a lot of dust in the work environment, improving rearvisibility. (SD300E only)



Sight in order to improve the design part

Cabin with Ergonomic Design



New Operator Panel
The instrument panel has been changed to improve operator comfort and convenience.



Cabin
- Enough space.
- Wide visual field.
- Noise inside cabin is lower than comparative units.
- Comfortable operating space.
- Multi-angle adjustable steering wheel.



Universal Cabin Features
Human oriented design
- High grade appearance of international standards.
- Wide operating space with low noise.

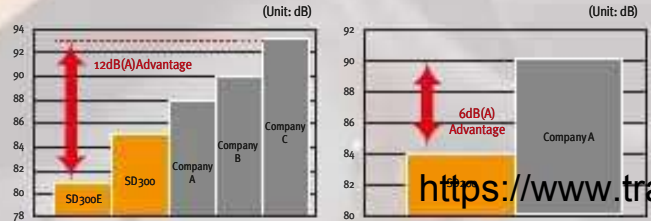


Adjustable Steering Wheel
Complying with ergonomic principles
Adjusting angle.
- Backward: 21°

Air Flow Increased by 30%
Excellent air-conditioning system and air circulation function as well as perfect defrost system provide operator a more comfortable operating environment and more easy controlling methods to benefit from the above functions.



Lower Noise
Offering a quiet and comfortable working environment and improving efficiency. (SD300E - Indoor noise levels : 81dB, The noise level of the equipment outside : 112dB)



<https://www.tractormanual.pdf.info/>



Preheat
A starter designed for the actuation at low temperature in winter with mighty battery capacity, now starts the engine at low temperature with one key.

Easy Controlled Rocker Switches
All the switches are arranged in concentrated and combined ways, easy to operate, and complying with ergonomic principles.

High-quality Sound System
Relieving long time operating fatigue, equipped with USB port which can be connected with MP3 music player or mobile phone charging device.



Solid Frame Structure

The most advanced 3D CAD and FEM technologies are adopted in the analysis of technical design, greatly improving the strength, durability and reliability of the device.

Reliability

The highly reliable components and anti-abrasive material not only improved the durability of the device, but also enhanced its work efficiency and extended its service life. (Well proven, high quality Doosan engine D808TIS / World best quality ZF transmission (optional) / High quality DISD transmission (optional) / Well proven, high quality DISD axle / Reliable 1 layer aluminium radiator / Embedded rear lamp)

Transmission Shaft : Double Bearing Drive Shaft (SD300E, SD300)

- Double bearing supporting propeller shaft in dual configuration for improving reliability of propeller shaft.
- Lubricating oil can be infused easily, enhancing the durability of the transmission shaft.



Aluminum Radiator

Aluminum radiator is stronger and better in quality than copper radiator. Aluminum radiator enhances reliability of the machines.



Improved Quality & Reliability

Doosan engine (SD300E)

- Doosan engine with well proven and stable quality provides high reliability and quality of the wheel loader.
- Doosan in house engine ensures faster and stable engine parts supply and reduces down time.



ZFtrans mission (SD300E optional)

Transmission from ZF featuring stable quality and reliability for enhancing reliability of power train.

Durability

SD300E / SD300 / SD200's working attachments and articulated pin are matched properly in size so as to position the force bearing area accordingly, increase diameters of the articulated pin roll and front and back frame

DISD in house axle

Axles developed by DISD proven of high quality and durability. In-house axle allowing rapid and stable part supply. (SD300E)



Doosan in house transmission (SD300E, optional)

In-house transmission developed by DISD proven of high quality and durability. In-house transmission allowing rapid and stable part supply.



Rear Lamp

Embedded in count weight and protected from external impact (SD300E)



With radiator to condenser assembled

- No electric fan motor for air conditioning condenser.
- Air conditioning condenser is integrated with radiator assembly and has less quality problems caused by electric fan motor.



Convenient Top-end Maintenance Management System

Open-end Hood

The hood can be opened completely not only to refill oil/gas and replace inner parts but also for the daily maintenance of the engine its adjacent devices. (SD300E, SD300, SD200)



Quickly Changeable Brake Disc
Brake disc can be replaced quickly and easily without disassembling tires, deeply shortening the maintenance time and saving time and labor cost.



High Efficiency Cooling Fan

The cooling fan of non-isometric blades can reduce noise and increase air flow.



Maintenance

The replacement cycle of vulnerable parts are substantially extended. Spacious maintenance space makes the maintenance work done more quickly and conveniently.



Easy and Quick Adjustable Maintenance Window
The 180°side-opened maintenance window provides a quick and direct view for inspection, largely saving daily monitoring and maintenance time.



Full Tilting of Engine Cover

With this one body engine cover, it is easy to repair engine and sub parts.

Inspection for High/ Low Hydraulic Oil Level

Used to monitor the hydraulic oil level more easily to reduce maintenance time, improving device service lifetime.



Outdoor Power switch Used to cut off battery power when necessary to enhance maintenance safety and convenience while protecting the battery and extending battery life when the device is parked for a long time. (SD300E, SD300, SD200)



Technical Specifications

ENGINE SYSTEM

SUMMIT S1000 S1000 S1000

		SUMMIT	S1000	S1000
ENGINE	MAKER & MODEL	D 005 an DE08TIS	W 01 dai WD10G220E23	Wei th 01 WP 06S125E22
	RATED HORSE POWER	160 kW/2000 rpm	162 kW/2000 rpm	92 kW/2200 rpm
	MAX. TORQUE	9 02 N.m / 1 30 0 r.p.m	9 00 N.m / 1 30 0 r.p.m	5 00 N.m / 1 40 0 r.p.m
	FUEL CONSUMPTION	215 g/kw.h @ RATED SPEED	225 g/kw.h @ RATED SPEED	215 g/kw.h @ RATED SPEED
	TYPE	TURBO, DIRECT INJECTION	TURBO, DIRECT INJECTION	TURBO, DIRECT INJECTION
	DISPLACEMENT	8071 cc	9726 cc	6754 cc
	NO. OF CYLINDER	6	—	—
	BORE & STROKE	111 X 139 (mm)	126 X 130 (mm)	105 X 130 (mm)
	HIGH IDLE SPEED	2200 ± 50 rpm	2150 ~ 2200 rpm	2376 ~ 2464 rpm
	LOW IDLE SPEED	800 ± 25 rpm	750 ± 20 rpm	750 ± 50 rpm
STARTING MOTOR	24V X 6 kw	24V X 7.5 kw	24V X 6 kw	
ALTERNATOR	VOLTAGE	28 V	—	—
	RATING AMPERES	60 A	55 A	55 A
BATTERY	SYSTEM VOLTAGE	24 V	—	—
	QUANTITY	12 V x 2	—	—
AIR CLEANER	CAPACITY (AMP)	120 AH	120 AH	100 AH
	TYPE	DRY, DOUBLE ELEMENT	DRY, DOUBLE ELEMENT	DRY, DOUBLE ELEMENT
	FILTRATION AREA	9.5 m ² (MAIN), 1.7 m ² (STEER)	6.5 m ² (MAIN), 1.5 m ² (STEER)	5.4 m ² (MAIN), 0.93 m ² (STEER)
	SIZE (DIA. X LENGTH)	Φ 276 mm X 500 mm	Φ 259.5 mm X 400 mm	Φ 215 mm X 395 mm
MUFFLER	DESCRIPTION	SIDE INLET, VERTICAL TAIL PIPE	SIDE INLET, VERTICAL TAIL PIPE	SIDE INLET, VERTICAL TAIL PIPE
	SIZE	Φ 280 mm X 780 mm	Φ 246 mm X 485 mm	Φ 200 mm X 440 mm
FAN	TYPE	INDUCED DRAFT, 8 BLADES, PLASTIC	BLOWING, 7 BLADE, STEEL	BLOWING, 6 BLADE, STEEL
	SIZE RPM @ MAX ENGINE RPM	Φ 860 mm 1500 rpm	Φ 760 mm 1800 rpm	Φ 600 mm 1800 rpm
RADIATOR	TYPE (HEAT REJECTION AREA)	FLAT PLATE FIN, AIR COOL	FLAT PLATE FIN, AIR COOL	FLAT PLATE FIN, AIR COOL
TRANSMISSION OIL COOLER	TYPE (HEAT REJECTION AREA)	PLATE, AIR COOL	PLATE, AIR COOL	PLATE, AIR COOL
HYDRAULIC COOLER	TYPE (HEAT REJECTION AREA)	PLATE, AIR COOL	PLATE, AIR COOL	PLATE, AIR COOL
AIR COOLER	TYPE (HEAT REJECTION AREA)	PLATE, AIR COOL	PLATE, AIR COOL	PLATE, AIR COOL

DRIVE MECHANISM

SUMMIT S1000 S1000

		SUMMIT	S1000	S1000	
TRANSMISSION	TYPE	4 SPEEDS, POWER-SHIFT, COUNTERSHAFT	2 SPEED, POWER-SHIFT, PLANETARY	4 SPEED, POWER-SHIFT, COUNTERSHAFT	
	TORQUE CONVERTER STALL RATIO	2.142	3.907	3.25	
	TORQUE CONVERTERS SIZE	340mm	315mm	315mm	
	CHARGING PUMP FLOW	8 0 l / m i n a t 2 0 0 0 r.p.m	10 0 l / m i n a t 2 0 0 0 r.p.m	60 0 l / m i n a t 2 0 0 0 r.p.m	
	HYDRAULIC PUMP P.T.O RATIO	1.111/1	0.8667/1.022	1.06	
	POWERSHIFT CONTROL PRESSURE	1.1-1.5 MPa	1.1-1.4 MPa	1.1-1.5 MPa	
	CONVERTER SAFETY RELIEF PRESSURE	4.9 bar	10.8 bar	4.9 bar	
	MAX. ROTATING SPEED	2500 rpm	2350 rpm	2500 rpm	
	SHIFT CONTROL	ELECTRONIC TYPE	MECHANICAL TYPE	MECHANICAL TYPE	
	OUTPUT FLANGE	FRONT DISC FLANGE REAR DISC FLANGE	FRONT - 9C MECHANICS REAR - 7C MECHANICS	FRONT DISC FLANGE REAR DISC FLANGE	
AXLE	TYPE	FULLY FLOATING PLANETARY-TYPE HUB DRIVE FIXED MOUNTING	—	—	
	OVERALL REDUCTION RATIO	22.85	22.853	20.26	
	AXLE LOAD (SINGLE CONDITION)	9400 kg	9200 kg	5500 kg	
	AXLE LOAD (BREAKOUT CONDITION)	27,000 kg	27,000 kg	18,500 kg	
	WHEEL BOLT P.C.D	Φ 475 mm	Φ 475 mm	Φ 404 mm	
	BRAKE TYPE	DRY DISC	—	—	
	BRAKE TORQUE @ 0 r.p.m	13050 N.m	13050 N.m	9660 N.m	
	DRIVE FLANGE	Front: 9C MECHANICS Rear: 7C MECHANICS	—	DISC MECHANICS	
	TIRE & WHEEL	TYPE	TUBE Type	—	TUBE Type
		TYPE SPEC.	23.5-25-16PR	—	17.5-25-12 PR
RIM SPEC.		19.5/2.5-25	—	14.0/1.5-25	
DISC OFFSET		206 mm	—	—	
TRAVELLING PERFORMANCE	MAX. SPEED	38.0 KPH	—	—	
	MAX. TRACTIVE EFFORT	17 TON	16 TON	9 TON	
	GRADEABILITY	30° (68%)	—	—	

Technical Specifications

BRAKE SYSTEM

		SP2000	SP2000	SP2000
BRAKEPUMP	TYPE	PISTON AIR	←	←
	MAX. SUPPLY FLOW	145 l/min	←	-
SERVICE BRAKE VALVE(SINGLE)	BRAKE PRESSURE AIR	7,7 bar	←	←
	BRAKE PRESSURE OIL	137 bar 7,7 bar	←	←
	PEDAL FORCE	30 kg at 137 bar	←	←
PARKING BRAKE	TYPE	SPRING-APPLIED AIR RELEASED SLIDING CALIPER DISC BRAKE	←	←
	MAX. PARKING TORQUE	1594 Nm	1550 Nm	907 Nm
SYSTEM & PRESSURE	SYSTEM	AIR PUSH HYDRAULIC, SINGLE LINE	←	←
	SERVICE BRAKE PRESSURE AIR	7,7 bar	←	←
	SERVICE BRAKE PRESSURE OIL	137 bar	←	←
	PARKING BRAKE RELEASE PRESSURE	3,9 bar	←	←
	BRAKE DISTANCE	6,5 m at 38kph	8,7 m at 32kph	6,5 m at 32kph

STEERING SYSTEM

		SP2000	SP2000	SP2000
PUMP	TYPE	GEAR	←	-
	DISPLACEMENT	81,68 cc/rev	80 cc/rev	-
	CONSTANT FLOW	152 l/min	145 l/min	-
STEERING UNIT	TYPE	Coaxial Flow Amplifying	←	Load Sensing
	DISPLACEMENT	1000 cc/rev	←	630 cc/rev
PRIORITY VALVE	TYPE	CONTAINS A SEQUENTIAL VALVE, PRIORITY VALVE, PRESSURE RELIEF VALVE	←	CONTAINS A SEQUENTIAL VALVE, PRIORITY VALVE
	CONTROL PRESSURE	11 bar	←	7 bar
	LS RELIEF VALVE SETTING	137 bar	←	←
	SEQUENTIAL RELIEF VALVE	137 bar	←	←
	MAX OIL FLOW TO STEERING	160 l/min	←	250 l/min

HYDRAULIC SYSTEM

		SP2000	SP2000	SP2000
MAINPUMP	TYPE	FIXED GEAR	FIXED GEAR	FIXED GEAR
	DISPLACEMENT	104,9 cc/rev	100 cc/rev	100 cc/rev
	MAX FLOW RATE	206 l/min	215 l/min	205 l/min
	TANK RESSURIZING DEVICE	SEMI PRESSURISED (AIR BREATHER)	←	←
STEERING & PILOT PUMP	TYPE	TANDEM, FIXED GEAR	TANDEM, FIXED GEAR	FIXED GEAR (Only Pilot)
	DISPLACEMENT (STEER/PILOT)	81,68 / 21,14 cc/rev	80 / 10 cc/rev	10 cc/rev
	MAX FLOW RATE (STEER/PILOT)	152 / 39 l/min	145 / 19 l/min	19 l/min
CONTROL VALVE	TYPE	PILOT CONTROL WITH FLOATSPOOL	←	←
	NO. OF SPOOLS	2	←	←
	SPOOL ARRANGEMENT	BUCKET-LOADER ARM	←	←
	RELIEF VALVE PRESSURE	167 bar	←	←
	OVERLOAD RELIEF VALVE PRESSURE	186 bar	←	←
REMOTE CONTROL VALVE	TYPE	PILOT OPERATED MONO LEVER WITH MAGNETIC COILS (DETENT COILS - ARM RAISE / FLOAT, BUCKET CROWD)	←	←
	PRESSURE/ STROKE CHARACTER	25 bar @ 14 mm STROKE	←	←
PILOTS SUPPLY VALVE	PILOT RELIEF PRESSURE	35 bar	25 bar	25 bar
RESTRICTION VALVE	CRACKING PRESSURE	29 bar	25 bar	29 bar
AIR BREATHER	CRACKING PRESSURE	-4,9/34 KPa	←	←
ACCUMULATOR; BRAKE	CHARGE PRESSURE	7,7 bar	←	←
	VOLUME	34 L	←	←

Dimension & Working ranges

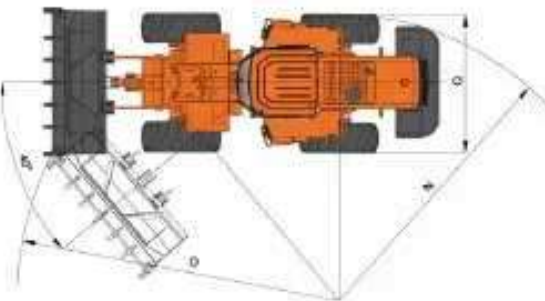
Bucket type	Code	Unit	General purpose						Light material			Heavy duty		High lift		
			SD300E	SD300	SD300	SD300E	SD300	SD300	SD300E	SD300	SD300	SD300E	SD300	SD300E	SD300	SD300
Capacity heaped ISO/SAE		m ³ yd ³	3 3.9	3 3.9	1.7 2.2	2.7 3.5	2.7 3.5	4 5.2	4 5.2	2.2 2.9	2.7 3.5	2.7 3.5	2.7 3.5	2.7 3.5	1.7 2.2	
Operating weight		kg lb	17,300 38,140	16,850 37,148	10,400 22,928	17,250 38,030	16,800 37,038	17,500 38,581	17,020 37,523	10,460 23,060	17,600 38,801	17,130 37,765	17,400 38,360	17,100 37,699	10,420 22,972	
Bucket width		mm ft in	2,992 9'9"	2,992 9'9"	2,506 8'2"	2,992 9'9"	2,992 9'9"	3,092 10'1"	3,092 10'1"	2,506 8'2"	2,960 9'8"	2,960 9'8"	2,992 9'9"	2,992 9'9"	2,506 8'2"	
Breakout force		kN lbf	161 36,194	161 36,194	96 21,582	161 36,194	161 36,194	132 29,675	132 29,675	92 20,682	161 36,194	161 36,194	150 33,721	150 33,721	94 21,132	
Static tipping load (static)		kg lb	13,300 29,322	11,800 26,015	8,000 17,637	13,300 29,322	11,800 26,015	12,618 27,818	11,730 25,860	7,580 16,711	12,513 27,587	11,670 25,728	12,482 27,518	9,670 21,319	7,850 17,306	
Static tipping load (at 40°)		kg lb	11,300 24,912	10,400 22,928	6,400 14,110	11,300 24,912	10,400 22,928	10,978 24,203	10,330 22,774	6,064 13,369	10,887 24,001	10,280 22,663	10,860 23,942	8,520 18,783	6,280 13,845	
Dump height (at 45°) 1)	A	mm ft in	3,085 10'1"	3,127 10'3"	2,800 9'2"	3,085 10'1"	3,127 10'3"	3,012 9'11"	3,092 10'1"	2,780 9'1"	3,097 10'2"	3,097 10'2"	3,384 11'12"	3,320 10'10"	3,110 10'2"	
Dump reach (at 45°) 1)	B	mm ft in	1,297 4'3"	1,215 3'11"	1,470 3'10"	1,297 4'3"	1,215 3'11"	1,246 4'1"	1,237 4'	1,200 3'11"	1,235 4'	1,235 4'	1,366 4'6"	1,340 4'4"	1,065 3'6"	
Digging depth	E	mm ft in	120 5"	105 4"	50 2"	120 5"	105 4"	90 3"	105 4"	50 2"	105 4"	105 4"	155 6"	155 6"	75 3"	
Height at bucket pivot point	F	mm ft in	4,150 13'7"	4,150 13'7"	3,740 12'3"	4,150 13'7"	4,150 13'7"	4,150 13'7"	4,150 13'7"	3,740 12'3"	4,150 13'7"	4,150 13'7"	4,450 14'7"	4,410 14'5"	4,030 13'2"	
Max. tilt angle at capacity	G	Deg	50	50	50	50	50	50	50	50	50	50	50	51	50	
Max. tilt angle at full speed	H	Deg	59	60	60	59	60	59	60	60	60	60	59	60	60	
Max. tilt angle at ground	I	Deg	45	45	45	45	45	45	45	45	45	45	45	45	45	
Max. dump angle at full speed	M	Deg	49	48	45	49	48	49	48	45	48	48	49	49	45	
Extension at tire side	N	mm ft in	5,800 19'	5,900 19'4"	5,250 17'2"	5,800 19'	5,900 19'4"	5,800 19'	5,900 19'4"	5,250 17'2"	5,900 19'4"	5,900 19'4"	5,800 19'	5,900 19'4"	5,250 17'2"	
Extension at bucket edge	O	mm ft in	6,510 21'4"	6,510 21'4"	5,710 18'8"	6,510 21'4"	6,510 21'4"	6,560 21'6"	6,560 21'6"	5,750 18'10"	6,550 21'5"	6,550 21'5"	6,790 22'3"	6,790 22'3"	5,870 19'3"	
Wheel base	P	mm ft in	3,200 10'6"	3,200 10'6"	2,850 9'4"	3,200 10'6"	3,200 10'6"	3,200 10'6"	3,200 10'6"	2,850 9'4"	3,200 10'6"	3,200 10'6"	3,200 10'6"	3,200 10'6"	2,850 9'4"	
Width at tires	Q	mm ft in	2,750 9'2"	2,840 9'4"	2,290 7'6"	2,750 9'2"	2,840 9'4"	2,750 9'2"	2,840 9'4"	2,290 7'6"	2,750 9'2"	2,840 9'4"	2,750 9'2"	2,840 9'4"	2,290 7'6"	
Tread		mm ft in	2,150 7'1"	2,240 7'4"	1,840 6'	2,150 7'1"	2,240 7'4"	2,150 7'1"	2,240 7'4"	1,840 6'	2,150 7'1"	2,240 7'4"	2,150 7'1"	2,240 7'4"	1,840 6'	
Groundclearance	R	mm ft in	420 1'5"	450 1'5"	340 1'1"	420 1'5"	450 1'5"	420 1'5"	450 1'5"	340 1'1"	420 1'5"	450 1'5"	420 1'5"	450 1'5"	340 1'1"	
Overall length	S	mm ft in	8,260 27'1"	8,080 26'6"	6,900 22'7"	8,260 27'1"	8,080 26'6"	8,287 27'2"	8,130 26'8"	6,940 22'9"	8,120 26'7"	8,120 26'7"	8,625 28'4"	8,360 27'5"	7,060 23'2"	
Overall height		mm ft in	3,450 11'4"	3,470 11'4"	3,280 10'9"	3,450 11'4"	3,470 11'4"	3,450 11'4"	3,470 11'4"	3,280 10'9"	3,450 11'4"	3,470 11'4"	3,450 11'4"	3,470 11'4"	3,280 10'9"	

1) Measured to the tip of the bucket teeth or bottom edge.

2) SD 300E / SD 300 All measurements with tyres 23.5-25-16PR (L3)

3) SD 200 All measurements with tyres 17.5-25-12PR

<https://www.tractormanual.pdf.info/>



Optional Equipments

Classification		SD300E	SD300	SD200	Remarks
Bucket	1.7m ³ – General Purpose	X	X	■	
	2.2m ³ – Light material	X	X	●	
	2.7m ³ – General Purpose	●	●	X	
	3.0m ³ – General Purpose	■	■	X	
	2.9m ³ – Cutting Edge	●	●	X	
	3.2m ³ – Cutting Edge	●	●	X	
	2.7m ³ – Rock Version	●	●	X	
	4.0m ³ – Light Material	●	●	X	
Work lever	Mono lever	■	■	■	
	Two lever	●	●	●	
Tire (Tube type)	Xulun	X	X	■	17.5-25-12PR
	Xulun	■	■	X	23.5-25-16PR
	Feng Shen	●	●	X	For Desert, 23.5-35-16PR
	Triangle	●	●	X	23.5-25-16PR
Tire (Tubeless type)	Xulun	●	●	X	23.5-25-16PR
	Triangle	●	●	X	23.5-25-16PR
	Triangle, Radial	●	●	X	23.5R25
Front	Standard	■	■	■	
	High Lift (Long Boom)	●	●	●	Equipped with 2.7m ³ bucket on a 5 ton long boom 3.0m ³ / 4.0m ³ bucket available only for the coal digging bucket.(For SD300E/ SD300)
T/M	LZ ZF - F4 / R3	■	X	X	
	DISD – F2 / R1	●	X	X	
	Hangchi	X	■	X	
	Jingyi	X	X	■	
Cooling	STD	■	■	■	
	Tropical Specification	●	X	X	
Cabin	General grass	■	■	■	
	Tinted Glass	●	●	●	

* STANDARD : ■ / OPTION : ● / NONE : X

<https://www.tractormanualpdf.info/>

