



THE VERSION OF 2015



Address: Room 314, Building 1, State Fair Fortune Plaza, No.18 Qinling Road, Qingdao, China
Tel: 0086-532-88976317
Fax: 0086-532-88976327
Email: info@everun.cc
Facebook: [everunmachinery](https://www.facebook.com/everunmachinery)
Youtube: [everunmachinery](https://www.youtube.com/everunmachinery)
Website: www.everun.cc

Qingdao Everun Machinery Co., Ltd



Qingdao Everun Machinery Co., Ltd

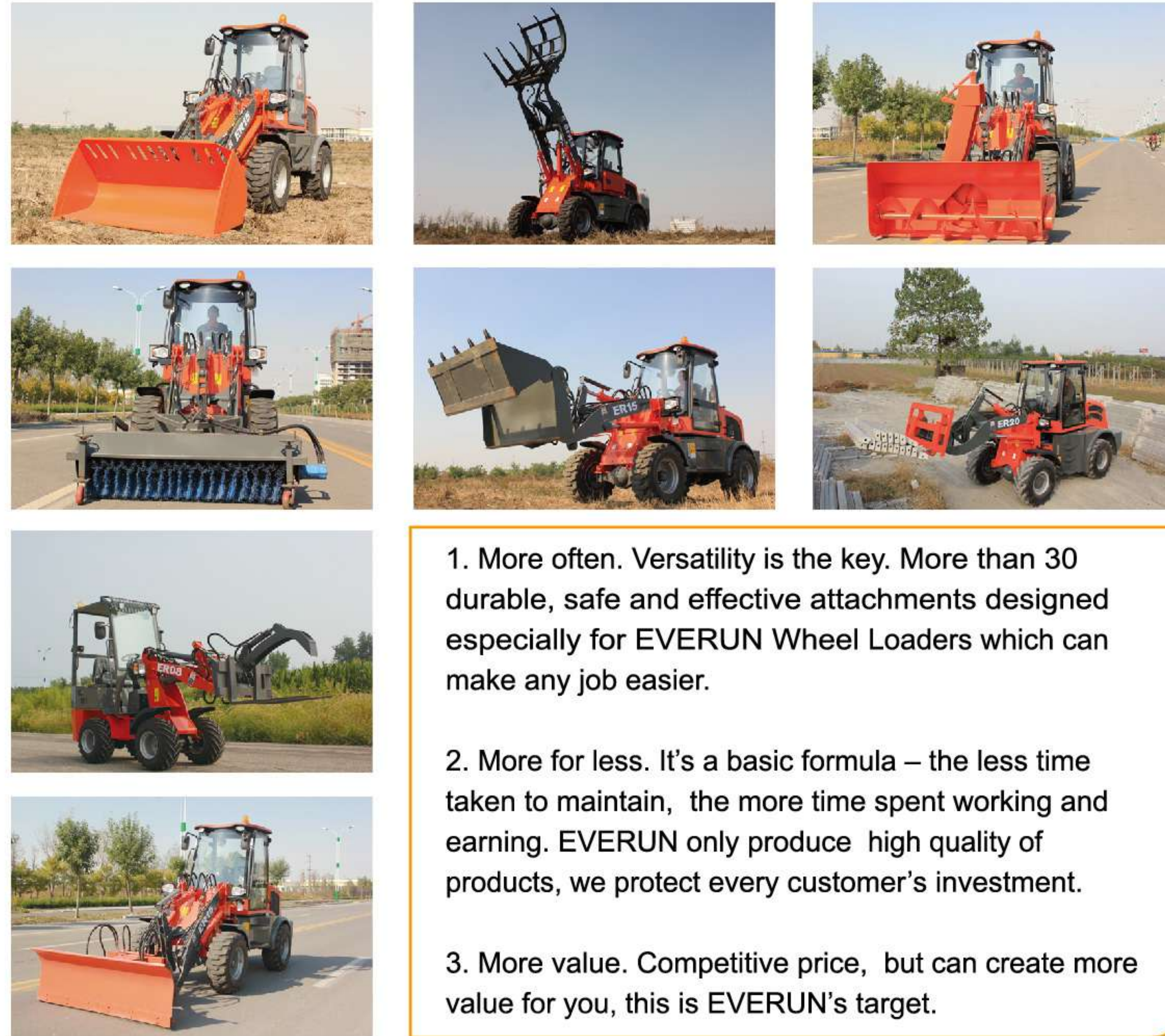


Qingdao Everun Machinery Co., Ltd is a company which has more than 10 years' exporting experiences of wheel loaders and farming machinery. We have very much learned about the strengths and weaknesses of these machines. In 2012, we started to produce these machines ourselves under the help of our European customer. Most of our products are designed on the basis of European customers' suggestion. Now EVERUN products can be found working in more than 30 countries.

Product research and development is always one of the most important factors in EVERUN's success, now we are specializing in producing and exporting of wheel loaders, tractors, tillers etc. EVERUN has adopted ISO 9001: 2000, the international quality management system, and most of our products have also passed CE, SGS, TUV certificate.

Excellent after-service can earn more market; this will always be first principle in Everun's culture. In order to make a good service for our European customers, we have set up a warehouse for spare parts in Germany, which could guarantee European customer a better after-service. Also registering Everun European Company is in an orderly way now. Choose Everun, excellent service will be guaranteed.

We hope our professional experience and skills can bring you prosperity, and we look forward to establishing good, long-term business relationships with all of our customers. Everun, run together with you forever.



1. More often. Versatility is the key. More than 30 durable, safe and effective attachments designed especially for EVERUN Wheel Loaders which can make any job easier.
2. More for less. It's a basic formula – the less time taken to maintain, the more time spent working and earning. EVERUN only produce high quality of products, we protect every customer's investment.
3. More value. Competitive price, but can create more value for you, this is EVERUN's target.



1. Safety, All of EVERUN wheel loaders are produced under the rule of CE,
2. Comfortable, Ergonomic design, Ideal operator position, big space even for larger operators.
3. Easy to drive, Our brief at every stage of development is to make the operator's life easier, and therefore more productive. All of EVERUN wheel loader can be equipped with quick hitch, joystick etc., the operator can control everything inside of cabin.



Excellent after-service can earn more market; this will always be first principle in EVERUN's culture. We have one year warranty for EVERUN wheel loader, and guarantee you can receive the spare parts within 5 working date. In order to make a good service for our European customers, we have set up a warehouse for spare parts in Germany, which could guarantee European customer a better after-service.



1. Strict Management for material purchase
EVERUN adopt best materials and components for every machine, ensure quality at every stage and then to guarantee long life and reliability.
2. Strict Management for inspection
EVERUN pay attention to every process of production, when wheel loaders leave factory, we know they're the best they can be.
3. Strict Management for Details.
We put more time, effort and attention to detail into every machine we make.

ER08

Standard Equipments:

Hydrostatic Transmission System, 3 Cylinder Engine, Standard Bucket, Luxury Cabin, E-Mark Seat, Adjustable Steering Wheel, Lock for Lifting and Steering Cylinder, Hydraulic-pressure Check System, Tipping Cabin, Floating Function, Joystick Easy-damaged, Spare Parts.

Optional Equipments:

EuroIII Engine, LED Working Lamp, Quick Hitch, E4 Lamp, Extra Hydraulic Line, Varta Anti-free Battery, Electric Joystick etc.



ER06 Wheel Loader

Standard Equipments:

CE Certificated Engine, Original Italy Hydrostatic System, American Eaton Steering Unit, Bucket, Quick Hitch, E-Mark, Seat, Adjustable Steering Wheel, 220 V Engine Heater, Lock for Lifting and Steering Cylinder, Tipping Cabin, Floating Function, Electric Joystick, Easy-damaged Spare Parts.



Optional Equipments:

Cabin, E4 Lamp, Extra Hydraulic Line, Varta Anti-free Battery, Perkins Engine.

ER06

1.0 Engine Details

Model: KD388
Rated Power: 19.6KW
Rated Speed: 2200 r/min (rpm)
Max. Torque: 90/1800N.m/min
Fuel Consumption ratio in standard working condition: 252g /kw. H

2.0 Operating Specifications

Bucket Capacity: 0.26 m³
Loading Capacity: 600-800KG
Operation Weight: 1700KG
Lifting Time: ≤8.0s
Driving Speed: 0-12km/h
Min. Turning Radius: 1989mm
Max. Turning Angle: ±40°

3.0 Overall Dimensions

Overall Length (Bucket on ground position): 3690mm
Overall Width: 1020mm/970mm
Overall Height: 2300mm
Dumping Height: 2000mm
Dumping Reach: 600mm
Min. Ground Clearance: 200mm
Wheel Base: 1340mm

4.0 Brake System

Service Brake: Four Wheel Hydraulic spread-shoed brake
Parking Brake: Hand operated

5.0 Tyre: 27*8.5-15TL or 26*12-12

ER08 Wheel Loader without Cabin

ER08

Wheel Loader without Cabin

Standard Equipments:

Hydrostatic Transmission System, 3 Cylinder Engine, Standard Bucket, Luxury Cabin, E-Mark Seat, Adjustable Steering Wheel, Lock for Lifting and Steering Cylinder, Hydraulic-pressure Check System, Floating Function, Tipping Cabin, Joystick, LED Working Lamp, Easy-damaged Spare Parts

Optional Equipments:

Quick Hitch, E4 Lamp, Extra Hydraulic Line, Varta Anti-free Battery, Electric Joystick etc.

Specifications:

1.0 Engine Details

Model: Laidong 3T30
 Rated Power: 22.1KW
 Rated Speed: 2350r/min(rpm)
 Max. Torque: 110/1762N.m/min
 Fuel Consumption: 1.617L

2.0 Operating Specifications

Bucket Capacity: 0.48 m³
 Loading Capacity: 800-1000 KG
 Operation Weight: 2000KG
 Lifting Time: ≤8.0s
 Driving Speed: 0-12km/h
 Min. Turning Radius: 1989mm
 Max. Turning Angle: 38°

3.0 Overall Dimensions

Overall length: 4600mm
 Overall Height: 2520mm
 Overall width: 1420mm
 Dumping Height: 2000mm
 Dumping Reach: 1100mm
 Min. Ground Clearance: 240mm
 Lifting Height: 3400mm
 Lifting Distance: 1360mm
 Wheel Base: 2170mm

4.0 Brake System

Service Brake: Four wheel hydraulic spread-shoed brake
 Breakout Force: 28KN

5.0 Tyre 10-16.5



ER10 Wheel Loader

Standard Equipments:

Standard Bucket, Luxury Cabin, CE Certificated Engine, E-Mark Seat, Adjustable Steering Wheel, 130W Heater, 220 V Engine Heater, Lock for Lifting and Steering Cylinder, Backward Imagine, Tipping Cabin, Mechanical Joystick, LED Lamp, Hydraulic-pressure Check System, Blinking Lamp without Key, Floating Function, and Easy-damaged Spare Parts.



Optional Equipments:

EuroIII Engine, Hydraulic Joystick, Electric Joystick, E4 Lamp, Extra Hydraulic Line, Quick Hitch, Varta Anti-free Battery, 12-16.5 Tyre, 14-17.5 Tyre, 31.5x15-15 Tyre, Tyre Chain

ER10

1.0 Engine Details

Model: Xichai 4DW91-45
 Engine type: In-line arrangement, water-cooled, four-cycle diesel Engine
 Rated Power: 37KW
 Rated Speed: 2200 r/min (rpm)
 Fuel Consumption ratio in standard working condition: 230g /kw. H

2.0 Transmission System

Type: Fixed-spindle Power shift
 Shift gear control oil pressure: 1.2~1.5MPa
 Rated input speed: 2500 (rpm)

3.0 Bucket

Bucket Capacity: 0.6 m³
 Bucket width: 1800mm
 Bucket type: Heavy-duty bolt on teeth
 Rated Load: 1000kg
 Operating Weight: 3300kg

4.0 Overall Dimensions

Overall Length (Bucket on ground position): 4750mm
 Overall Height
 Ground to Cab Top: 2500mm
 Dumping Height: 2600mm
 Min. Base to the Ground: 230mm
 Overall Width: 1730mm

5.0 Operating Specifications

Steering System: Articulated Frame with hydraulic power steering
 Min Turning Radius: 4500mm
 Driving System: Hydraulic converter

6.0 Brake System

Service Brake: Four Wheel Hydraulic spread-shoed brake
 Parking Brake: Hand operated

7.0 Tyre: 12.00-16

ER12

Standard Equipments:

Standard Bucket, Luxury Cabin, Euroiii Engine, E-Mark Seat, Adjustable Steering Wheel, 130W Heater, 220 V Engine Heater, Lock for Lifting and Steering Cylinder, Backward Imagine, Tipping Cabin, Mechanical Joystick, Disc-Brake, Floating Function, Hydraulic-pressure Check System, Blinking Lamp without Key, and Easy-damaged Spare Parts.

Optional Equipments:

Hydraulic Joystick, Electric Joystick, E4 Lamp, Extra Hydraulic Line, Quick Hitch, LED Light, Varta Anti-free Battery, 12-16.5 Tyre, 14-17.5 Tyre, 31.5×15-15 Tyre, Tyre Chain

Specifications:

- 1.0 **Engine Details**
 Model: Xinchai 490 Engine(Euroiii and EPA Certificate)
 Engine type: In-line arrangement, water-cooled, four-cycle diesel Engine
 Rated Power: 37KW
 Rated Speed: 2200 r/min (rpm)
 Fuel Consumption ratio in standard working condition: 230g /kw. H
- 2.0 **Transmission System**
 Type: Fixed-spindle Power shift
 Shift gear control oil pressure: 1.2~1.5MPa
 Rated input speed: 2500 (rpm)
- 3.0 **Bucket**
 Bucket Capacity: 0.6 m³
 Bucket width: 1800mm
 Bucket type: Heavy-duty bolt on teeth
 Rated Load: 1200kg
 Operating Weight: 3300kg
- 4.0 **Overall Dimensions**
 Overall Length (Bucket on ground position): 4750mm
 Overall Height
 Ground to Cab Top: 2500mm
 Dumping Height: 2600mm
 Min. Base to the Ground: 230mm
 Overall Width: 1730mm
- 5.0 **Operating Specifications**
 Steering System: Articulated Frame with hydraulic power steering
 Min Turning Radius: 3900mm
 Driving System: Hydraulic converter
- 6.0 **Brake System**
 Service Brake: Four Wheel Hydraulic spread-shoed brake
 Parking Brake: Hand operated
- 7.0 **Tyre: 12-16.5**



Standard Equipments:

Standard Bucket, Luxury Cabin, Euroiii Engine, E-Mark Seat, Adjustable Steering Wheel, 130W Heater, 220 V Engine Heater, Lock for Lifting and Steering Cylinder, Backward Imagine, Tipping Cabin, Electric Joystick, Disc Brake, Quick Hitch, 12-16.5 Tyre, Floating Function, Hydraulic-pressure Check System, Blinking Lamp without Key, and Easy-damaged Spare Parts.



Optional Equipments:

E4 Lamp, Extra Hydraulic Line, LED Light, Varta Anti-free Battery, 14-17.5 Tyre, 31.5×15-15 Tyre, Tyre Chain

ER15

- 1.0 **Engine Details**
 Model: Xinchai 498BT(Euroiii and EPA Standard)
 Engine type: In-line arrangement, water-cooled, four-cycle diesel Engine
 Rated Power: 37KW
 Rated Speed: 2400 r/min (rpm)
 Fuel Consumption ratio in standard working condition: 230g/kw.h
- 2.0 **Transmission System**
 Type: Fixed-spindle Power shift
 Shift gear control oil pressure: 1.2~1.5MPa
 Rated input speed: 2500 (rpm)
- 3.0 **Bucket**
 Bucket Capacity: 0.75m³
 Bucket width: 1800mm
 Bucket type: Heavy-duty bolt on teeth
 Max. Breakout Force: 36.8KN
 Rated Load: 1500kg
 Operating Weight: 3600kg
- 4.0 **Overall Dimensions**
 Overall Length (Bucket on ground position): 5300mm
 Overall Height
 Ground to Cab Top: 2750mm
 Dumping Height: 2700mm
 Min. Base to the Ground: 260mm
 Overall Width: 1800mm
- 5.0 **Operating Specifications**
 Steering System: Articulated Frame with hydraulic power steering
 Min Turning Radius: 4500mm
 Driving System: Hydraulic converter
- 6.0 **Brake System**
 Service Brake: Four Wheel Hydraulic spread-shoed brake
 Parking Brake: Hand operated
- 7.0 **Tyre**
 Model: 12-16.5
- 8.0 **Wheelbase: 2100mm**
- 9.0 **Track: 1500mm**

ER16

Standard Equipments:

Standard Bucket, Luxury Cabin, Euroiii Engine, E-Mark Seat, Adjustable Steering Wheel, 130W Heater, 220 V Engine Heater, Lock for Lifting and Steering Cylinder, Backward Imagine, Tipping Cabin, Electric Joystick, Air Brake, Quick Hitch, Floating Function, Hydraulic-pressure Check System, Blinking Lamp without Key, and Easy-damaged Spare Parts.

Optional Equipments:

E4 Lamp Extra Hydraulic Line LED Light Varta Anti-free Battery, 14-17.5 Tyre, 31.5x15-15 Tyre, Tyre Chain.

Specifications:

1.0 Engine Details

Model: Xinchai 498BT(Euroiii and EPA Standard)
 Engine type: In-line arrangement, water-cooled, four-cycle diesel Engine
 Rated Power: 37KW
 Rated Speed: 2400 r/min (rpm)
 Fuel Consumption ratio in standard working condition: 230g/kw.h

2.0 Transmission System

Type: Fixed-spindle Power shift
 Shift gear control oil pressure: 1.2~1.5MPa
 Rated input speed: 2500 (rpm)

3.0 Bucket

Bucket Capacity: 0.8 m³
 Bucket width: 2000mm
 Bucket type: Heavy-duty bolt on teeth
 Max. Breakout Force: 36.8KN
 Rated Load: 1600kg
 Operating Weight: 4100kg

4.0 Overall Dimensions

Overall Length (Bucket on ground position): 5300mm
 Overall Height
 Ground to Cab Top: 2750mm
 Dumping Height: 2700mm
 Min. Base to the Ground: 260mm
 Overall Width: 1800mm

5.0 Operating Specifications

Steering System: Articulated Frame with hydraulic power steering
 Min Turning Radius: 4500mm
 Driving System: Hydraulic converter

6.0 Brake System

Service Brake: Four Wheel Hydraulic spread-shoed brake
 Parking Brake: Hand operated

7.0 Tyre

Model: 20.5/70-16

8.0 Wheelbase: 2100mm

9.0 Track: 1500mm



Standard Equipments:

Standard Bucket, Luxury Cabin, CE Approved Engine, E-Mark Seat, Adjustable Steering Wheel, 130W Heater, 220 V Engine Heater, Lock for Lifting and Steering Cylinder, Backward Imagine, Tipping Cabin, Mechanical Joystick, Disc-Brake, Floating Function, Hydraulic-pressure Check System, Blinking Lamp without Key, and Easy-damaged Spare Parts.



Optional Equipments:

Hydraulic Joystick, Electric Joystick, E4 Lamp, Extra Hydraulic Line, Quick Hitch, LED Light, Varta Anti-free Battery, Tyre Chain

ER20

1.0 Engine Details

Model: XiChai 4DX21-72 Engine
 Engine Type: In-line arrangement, water-cooled, four-cycle diesel Engine
 Rated Power: 55KW
 Rated Speed: 2400 r/min (rpm)
 Fuel Consumption ratio in standard working condition: 230g /kw.H

2.0 Transmission System

Type: Fixed-spindle Power shift
 Shift gear control oil pressure: 1.2~1.5MPa
 Rated input speed: 2500 (rpm)

3.0 Bucket

Bucket Capacity: 1.0m³
 Bucket width: 2100mm
 Bucket type: Heavy-duty bolt on teeth
 Rated Load: 2000kg

4.0 Operating Specifications

Steering System: Articulated Frame with hydraulic power steering
 Min Turning Radius: 4600mm
 Driving System: Hydraulic converter
 Operating Weight: 5600kg

5.0 Overall Dimensions

Overall Length: 5800mm
 Overall Height:
 Ground to Cabin Top: 2750mm
 Dumping Height: 3100mm
 Min. Base to the Groud: 350mm
 Overall Width: 2000mm

6.0 Brake System

Service Brake: Four Wheel Hydraulic spread-shoed brake
 Parking Brake: Hand operated

7.0 Tyre: 16/70-20

ER1500

Standard Equipments:

Standard Bucket, Luxury Cabin, Euroiii Engine, E-Mark Seat, Adjustable Steering Wheel, Joystick, Quick Hitch, 12-16.5 Tyre, and Easy-damaged Spare Parts.

Optional Equipments:

Electric Joystick, E4 Lamp, Extra Hydraulic Line, LED Light, Varta Anti-free Battery, 14-17.5 Tyre, 31.5×15-15 Tyre, Tyre Chain

Specifications:

1.0 Engine Details

Model: Chinese Euroiii Xinchai498 Engine
 Engine type: In-line arrangement, water-cooled, four-cylinder Engine
 Rated Power: 37KW (50.32H.P.)
 Rated Speed: 2400 r/p.min (rpm)
 Fuel Consumption ratio in standard working condition: 230g/kw.h

2.0 Transmission System

Hydraulic converter + drive shaft + axles

3.0 Bucket

Bucket Capacity: 0.65 m3
 Bucket width: 1700mm
 Bucket type: Heavy-duty bolt on teeth
 Rated Load: 1500kg including attachment

4.0 Overall Dimensions

Overall Length: 4320mm
 Overall Height: 2670mm
 Overall Width: 1720mm
 Max. lifting Height: 4250mm

5.0 Operating Specifications

Steering System: Articulated Frame with hydraulic power steering
 Min Turning Radius: 4950mm
 Driving System: Hydraulic converter, four wheel drive
 Quick coupling system
 Joystick
 Self levering

6.0 Brake System

Service Brake: Four Wheel Chuck brake
 Parking Brake: Hand operated

7.0 Tyre

Model: 12-16.5, 12ply
 Width: 307mm
 Diameter: 831mm

8.0 Wheel Base: 2400mm

9.0 Track: 1345mm



Standard Equipments:

Standard Bucket, Luxury Cabin, E-Mark Seat, Adjustable Steering Wheel, Heater, CE Engine, Lock for Lifting and Steering Cylinder, Backward Imagine, Tipping Cabin, Easy-damaged Spare Parts.



Optional Equipments:

Hydraulic Joystick, Quick Hitch, Extra Hydraulic Line, LED Light, E4 Lamp, Automatic Lubrication Monitor, Varta Anti-freeze Battery, Rops&Fops Cabin, Floating Function, Loader Weighter etc.

ER35

1.0 Engine Details

Model: Yuchai/DEUTZ/Cummins 6BT5.9
 Engine type: In-line arrangement, water cooled, six-cycle diesel Engine
 Rated Power: 92KW
 Rated Speed: 2200 r/min (rpm)
 Fuel Consumption ratio in standard working condition: 230g/kw.H

2.0 Transmission System

Type: Fixed-spindle Power shift
 Shift gear control oil pressure: 1.2~1.5Mpa
 Rated input speed: 2500(rpm)

3.0 Operating Specifications

Steering System: Articulated Frame with hydraulic power steering
 Min Turning Radius: 5100mm
 Driving System: Hydraulic converter
 Operating Weight: 9700kg
 Dumping Clearance: 2800-3100mm
 Dumping Reach: 1160mm
 Raising Time: <6s
 Total Cycling Time: <11s
 Max. Breakout Force: 96KN
 Articulation Angle: ±36°
 Climbing Ability: 28°
 Wheel Base: 2600mm
 Tread: 1800mm
 Traveling Speed
 1st(F/R): 10/14 km/h
 2nd(F/R): 16/25 km/h
 3rd(F): 21 km/h
 4th(F): 35 km/h

4.0 Bucket

Bucket Capacity: 1.7m3
 Bucket type: Heavy-duty bolt on teeth
 Rated Load: 3000kg

5.0 Brake System

Service Brake: Four Wheel Hydraulic spread-shoed brake
 Parking Brake: Hand operated

6.0 Tyre: 17.5-25

ER2800

Standard Equipments:

Luxury Cabin, EuroIII Engine, Adjustable Steering Wheel, Hydraulic Driving, Forks with 1070mm , 2 Stage of Mast(3.7m)



| Item | Parameter |
|---------------------------------------|-------------------------------|
| Rated Load (KG) | 2800 |
| Load Center (mm) | 565 |
| Lifting Height (mm) | 3000 |
| Free Lift Height (mm) | 150 |
| Mast Tilt Angle Front/Rear (°) | 6/12 |
| Max Lifting Speed (full load) (mm/s) | 372 |
| Running | Advance: I gear/II gear 8/16 |
| Speed (km/h) | Backlash: I gear/II gear 8/16 |
| Max Climbing Gradient (%) (full load) | 50 |
| Max Traction (Kgf) | 2587 |
| Max Steering Angle (°) | ±35 |
| Swinging Angle of Rear Axle (°) | ±12 |
| Min Turning Radius (mm) | 4500 |
| External | Length (mm) 4585 |
| Dimensions | Width (mm) 1700 |
| | Height (mm) 2720 |
| Min Ground Clearance (mm) | 260 |
| Dead Weight (Kg) | 3268 |



Standard Equipments:

EuroIII Engine, Air-Conditioner, Joystick, Side Shifter, Quick Hitch, Adjustable Steering Wheel, Easy-damaged Spare Parts.

ER3500

| Item | Parameter |
|--|------------------------------|
| Rated Load | 3500kg |
| Length | No Fork(mm) 3655 |
| | With the Fork(mm) 5055 |
| Width (mm) | 1725 |
| Height | Height of the Mast(mm) 2120 |
| | Height of the Cab (mm) 2170 |
| | Max Lifting Height (mm) 5150 |
| Wheelbase (mm) | 2080 |
| Front Overhang Distance(mm) | 530 |
| Front Wheel Tread (mm) | 1425 |
| Rear Wheel Tread (mm) | 1425 |
| Ground Clearance | 145 |
| Max Lifting Height (mm) | 4000 |
| Mast Forward Tilting Angle/Mast Rear Tilting Angle (.) | 6/12 |
| Dead Weight no-load (kg) | -- |
| Max Lifting Speed(full-load)mm/s | 425.5 |
| Max Falling Speed(full-load) | 412 |
| Max Falling Speed (no- load) | 300 |
| Min Turning Radius(mm) | 4760 |
| Max Speed (no-load)(km/h) | 37 |
| Max Climbing Degree (full load)% | 20 |
| Max Drawbar Pull(full load)kN | 30 |
| Load Center Distance(mm) | 500 |
| Engine model | Xinchai 498BT1 |

ER5000

Standard Equipments:

CE Approved Engine, Air-Conditioner, Joystick, Side Shifter, Quick Hitch, Adjustable Steering Wheel, Easy-damaged Spare Parts.

| | | | |
|------------------------|------------------------|-----------------------------------|-----------------------|
| Overview | Model of Driving Power | | Diesel |
| | Rated Load | | 5000kg |
| | Load Center Distance | | 500mm |
| | Lifting Height | | 3000mm / 4500mm |
| Performance | Speed | Running Speed (no load) | 22Km/h |
| | | Lifting Speed(full load) | 300 mm/s |
| | Max. Grade Ability | | 20° |
| | Dead Weight | | 9500kg |
| Tyres | Tires | Front Wheel | 11.00-20 |
| | | Rear Wheel | 16/70-20 |
| | Tread | Front Wheel | 1575mm |
| | | Rear Wheel | 1545mm |
| Wheelbase | | 2185mm | |
| Min Ground Clearance | | 285mm | |
| Power and Transmission | Battery | Voltage | 24V |
| | | Model | CUMMINS 4BTA 3.9-C100 |
| | Engine | Place of Origin | Xiangyang Hubei |
| | | Output Power | 74 KW |
| | | Rated Torque | 410 |
| | | Number of Cylinders | 4 |
| | | Fuel Tank Capacity | 40L |
| | | Transmission Gear(front and rear) | 2/2 |
| | Work Pressure | | 16 Mpa |



| | | | |
|------------------------|-----------------------------------|--------------------------|--------------------|
| Overview | Model of Driving Power | | Diesel |
| | Rated Load | | 10000kg |
| | Load Center Distance | | 600mm |
| Performance | Lifting Height | | 3000mm / 4500mm |
| | Speed | Running Speed (no load) | 30Km/h |
| | | Lifting Speed(full load) | 187mm/s |
| | Max. Grade Ability | | 20° |
| Dead Weight | | 14500kg | |
| Tyres | Tires | Front Wheel | 14.00-24 |
| | | Rear Wheel | 17.5-25 |
| | Tread | Front Wheel | 1850mm |
| | | Rear Wheel | 1805mm |
| Wheelbase | | 2745mm | |
| Min Ground Clearance | | 390mm | |
| Power and Transmission | Battery | Voltage | 24V |
| | | Model | DEUTZ / WP6G125E22 |
| | Engine | Place of Origin | Weifang Shandong |
| | | Output Power | 92KW |
| | | Rated Torque | N.a |
| | | Number of Cylinders | 6 |
| | | Cylinder Size X Trip | 90X100mm |
| | | Displacement | 2540cc |
| | Fuel Tank Capacity | | 65L |
| | Transmission Gear(front and rear) | | 3/2 |
| Work pressure | | 16 Mpa | |

Standard Equipments:

CE Approved Engine, Air-Conditioner, Joystick, Side Shifter, Quick Hitch, Adjustable Steering Wheel, Easy-damaged Spare Parts.

ER10000



Run together with you forever.

Adjustable Pallet Forks



Grapple Pallet Forks



Drum Folder



Snow Blade



Pallet Forks



Digger



wooden Forkers



Auger



Hey Forks



Grapple Forks



4 in 1 Bucket



Grapple Bucket



Snow Bucket



Barrel Clamp



Plain Bucket



Sweeper



V Snow Blade



Snow Blower

