

ÇUKUROVA

EXCAVATOR

GTI 723

Turbocharged John Deere Engine

Power 150 hp / 112 kW

Operating Weight 23,0 tons

Bucket Capacity 0,85 m³



Embodiment of POWER



SPECIAL FEATURES



Main Control Valve

Arm, boom and swing movements are obtained by main control valve. Hydraulic power can be increased by main relief valve which can be adjusted as 2 step. Also, installation ports for the hammer or another attachment are available.

Hydraulic Joystick Control

Application of the hydraulic joystick control increase the operator efficiency to the upper level with its sensitive and soft use, give a working opportunity to the operators with lower effort.



Powerful Engine

Powering it with **John DEERE 6068TF275 Stage II** engine provides 112 kW at 2200 rpm. It's a turboc-charged diesel which offers world-class performance and complies with all relevant environmental regulations. Its low fuel consumption and maintenance costs make the CMI 723 even more attractive.



Hydraulic Travel Group

Travel hydromotor is 2 speed axial piston type, speed selection depends on variable load. For stable travel, there is counter balance valve, and heavy-duty type reduction gear used for the hydromotor travel system.

OPERATORS ENVIRONMENT

Cab

- Specially designed FOPS/FOG cab provides perfect operating comfort, excellent visibility, and reliability.

- Control panels are fully equipped with the latest technology, the arrangement of the controls are within easy reach, the audible and visual warning on main function guide warn the operator for failure.

- Front window can be opened by sliding towards to cab ceiling, while superior fresh air circulation is provided in the cab, tinted safety glass improves visibility and sun visor protects operator against strong sunlight and ensures clear vision.



- Operator cab interior low noise level according to ISO standards provides a silent working environment to the operator.

- Radio/CD player is presented as standard.

Seat

Adjustable operator's seat with safety belt can be adjusted to different body weights and heights to obtain comfortable ride and work.

Heating and ventilation

Fresh air heater/blower unit, full heating control system, defroster control with only one switch are existing standard and and air-condition is existing optional.

HYDRAULIC PUMP

Hydraulic pump with 2 variable displacement axial piston pump increases the machine performance and pump life. With a negative control feature, it has capability of flowrate generation according to request. Depends on the load increase, power requirement of pump is balanced as optimum with engine power, and engine stalling is prevented. This, provides high efficiency and long life to the machine.

Hydraulic pump and engine compartment enable operator to access all the necessary maintenance points easily and quickly by spending less time and effort.

All sealed pins and bushings extend the life time of the linkages of the attachments by preventing the entry of dust or blockages and increase the time between service periods.



TECHNICAL SPECIFICATIONS

Engine

- Heavy duty design, high torque capability, powerful JOHN DEERE engine.
- Low fuel consumption and low maintenance cost.
- Environmental, Stage II
- Low noise, smooth and soft engine run with %100 dynamically balanced crankshaft
- Automatic belt tensioner.
- Replacable, wet type cylinder liners.
- Dry type air cleaner with primary and safety elements.

Model	John Deere 6068TF275
Type	4 stroke diesel, turbo charged
Rated power	150 (112) hp/kW
Rated speed	2200 rpm
Displacement	6,8 lt
Bore and Stroke	106x127 mm
No of cylinders	6
Compression Ratio	17,0:1
Max. Torque	609 Nm
Balance	100% Balanced

Electrical System

Battery	24/2x120 V/Ah
Starter	7 kW

Hydraulic System

- Open Centre System.
- With axial piston pump application, softer and sensitive control possibility, low operation cost.
- Power modulated, silent.
- Elastic hydraulic hoses resist high pressure.

Main Pump

Type	2 variable displacement axial piston pumps
Max. Flowrate	243 Lt/min.
Pilot Pump	22 Lt/min.

Working Pressures

Attachments (Boom,Arm,Bucket)	320 kgf/cm ²
Power Boost (Boom,Arm,Bucket)	350 kgf/cm ²
Travel	350kgf/cm ²
Swing Circuit	180 kgf/cm ²
Pilot Circuit	40 kgf/cm ²

Undercarriage

Centre Frame	X-leg Type
Track Frame	Pentagonal Box Type
No. Of Shoes	2x49
No. Of Track Rollers	2x9
No. Of Carrier Rollers	2x2
No. Of Rail Guards	2x2
Track Tensioning	Hydraulic Spring Tensioning

Swing System

Swing Motor	Axial Piston Motor
Swing Reduction	Planetary Gear Reduction
Swing Brake	Hydraulic Disc Type
Swing Speed	9,5 rpm

TECHNICAL SPECIFICATIONS

Cylinders

Boom	125x85x1325 mm
Arm	140x100x1640 mm
Bucket	125x85x1060 mm

Drives and Brakes

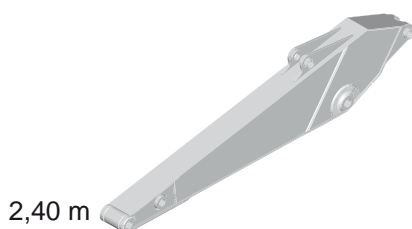
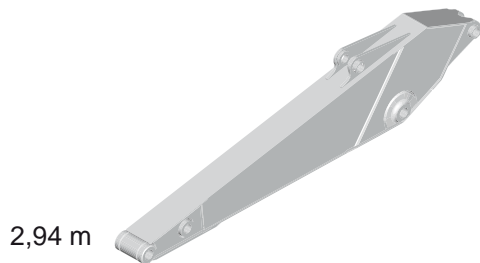
Drive Method	Hydrostatic
Drive Motor	2 Speed Axial Piston Motor
Reduction System	Planetary Reduction Gear
Max Travel Speed (High/Low)	4.8 / 2.8 km/h
Max. Drawbar Pull	19200 kgf
Gradeability	35°(%70)
Parking Brake	Hydraulic, Disc Type

Weights

Operating Weight	23,000 kg
------------------	-----------

Breakout Forces

Arm Length	2940 mm
Bucket Capacity	13110 kgf
Bucket Width	13500 kgf
Bucket Breakout Force	12020 kgf
Bucket Breakout Force(Power Boost)	12910 kgf
Arm Breakout Force	0.85 m ³
Arm Breakout Force(Power Boost)	1170 mm



Cab

- FOPS cab, tinted safety glass giving total visibility, fully opening front window, front windscreen wiper.
- Seat; adjustable acc. to operator weight.
- Heating and ventilation; fresh air heater/blower unit, full heating control system, defroster control with only one switch.
- Control panels equipped with latest technology, visual and audible operator warning functions on main controls.
- Ergonomic controls.

Capacities

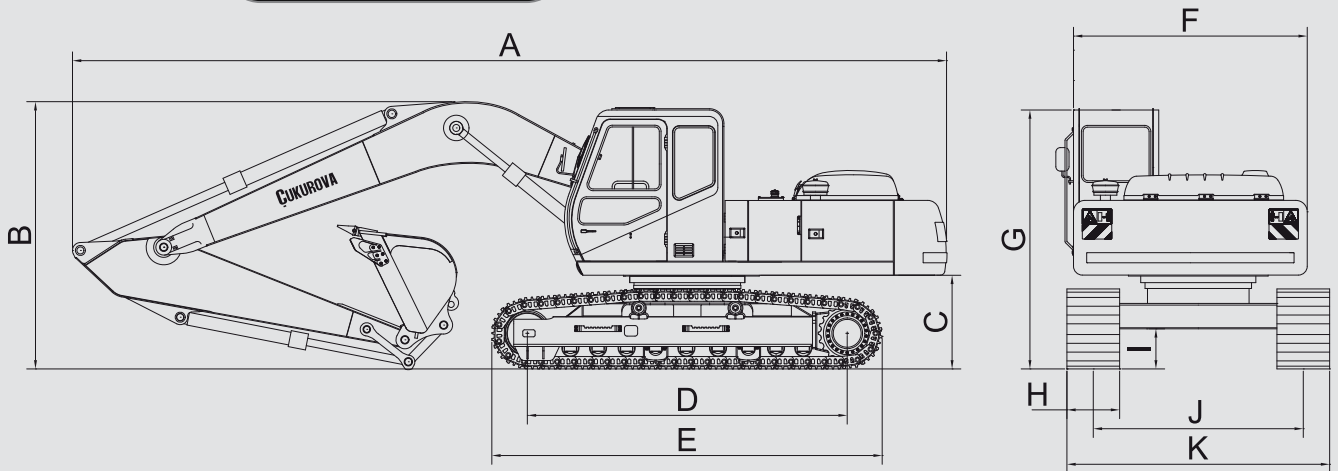
	Liters
Fuel Tank	400
Hydraulic Tank	210
Hydraulic System	355
Travel Reduction	2x3,3
Swing Reduction	6
Engine Oil	19
Radiator	35





DIMENSIONS

EXCAVATOR



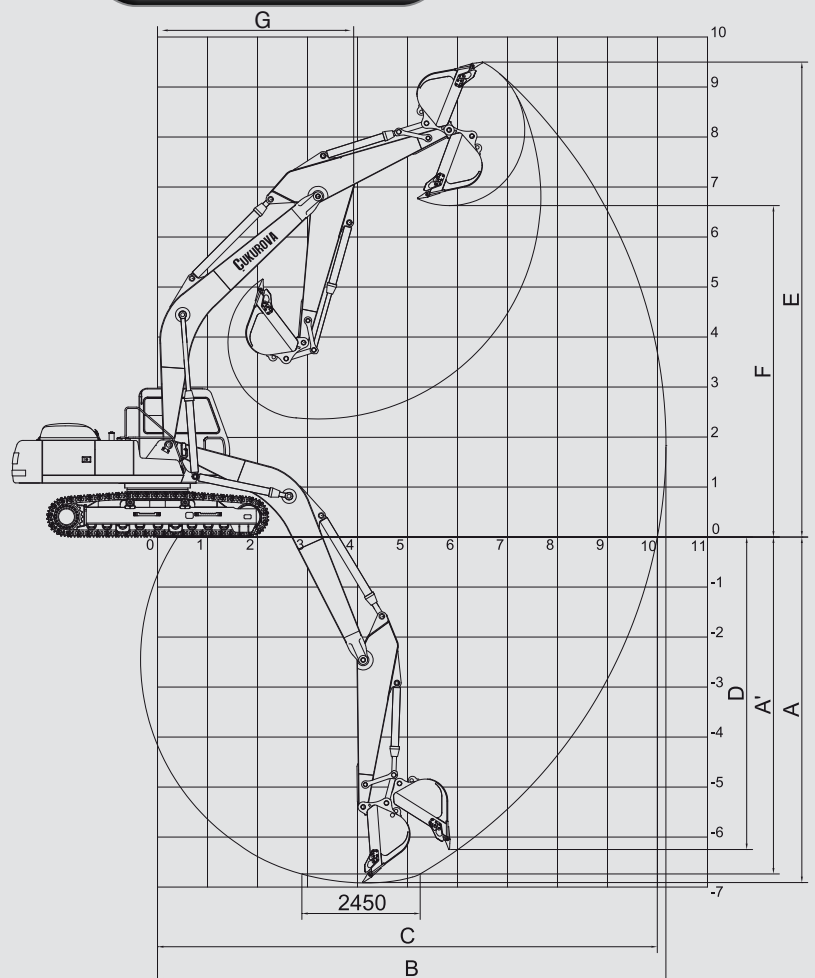
A - Overall Machine Length	9.946 mm
B - Overall Machine Height	3.040 mm
C - Upperstructure Ground Clearance	1.065 mm
D - Centre / Centre (idler to sprocket)	3.640 mm
E - Track Length	4.442 mm
F - Width of Upperstructure	2.660 mm

G - Cab Height	2.946 mm
H - Track Shoes Width (Standard)	600 mm
I - Ground Clearance	456 mm
J - Track Gauge	2.390 mm
K - Track Overall Width (Shoes 0,6 m)	2.990 mm

Operating Dimensions

Boom Length	5.800 mm
Arm Length	2.940 mm
A Max. Digging Depth	6.925 mm
A' Max. Digging Depth (at 2450 mm Distance)	6.750 mm
B Max. Digging Reach	10.170 mm
C Max. Digging Reach On Ground	10.000 mm
D Max. Vertical Wall Digging Depth	6.265 mm
E Max. Digging Height	9.485 mm
F Max. Dumping Height	6.615 mm
G Min. Swing Radius	3.937 mm

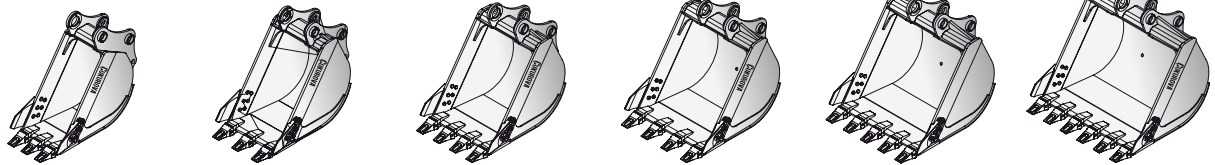
EXCAVATOR



BUCKETS

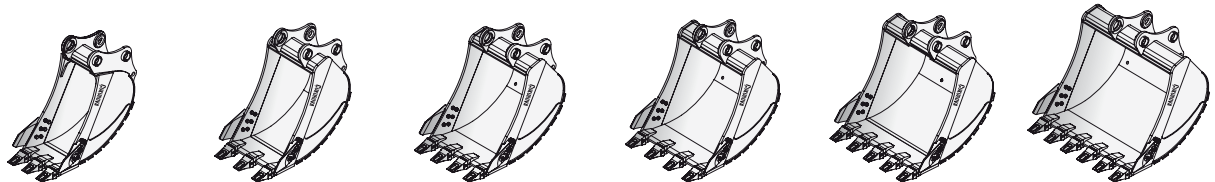


GENERAL PURPOSE



Width	600 mm	750 mm	900 mm	1050 mm	1176 mm	1400 mm
Capacity	0,44 m ³	0,54 m ³	0,65 m ³	0,76 m ³	0,85 m ³	1,00 m ³
Weight	508 kg	575 kg	665 kg	845 kg	950 kg	1185 kg
Arm (m)	2,94	2,94	2,94	2,94	2,94	2,94
	2,40	2,40	2,40	2,40	2,40	2,40

HEAVY DUTY



Width	600 mm	750 mm	900 mm	1050 mm	1176 mm	1400 mm
Capacity	0,44 m ³	0,54 m ³	0,65 m ³	0,76 m ³	0,85 m ³	1,00 m ³
Weight	508 kg	575 kg	665 kg	845 kg	950 kg	1185 kg
Arm (m)	2,94	2,94	2,94	2,94	2,94	2,94
	2,40	2,40	2,40	2,40	2,40	2,40

Max. Material Density 1,900 kg/m³

Max. Material Density 1,600 kg/m³

Max. Material Density 1,200 kg/m³

CAPACITIES

Boom: 5,8 m Arm: 2,94 Bucket: 0,85 m3 Shoe: 600 mm



LOAD POINT HEIGHT (m)		LOAD RADIUS												AT MAXIMUM REACH				
		2		3		4		5		6		7		8		Reach (m)		
6	Kg									3840	3840	4010	3810	2810	2810	2660	2390	9,2
5	Kg							4730	4730	4220	4220	4110	3740	3940	2810	2640	2390	9,3
4	Kg					6490	6490	5220	5220	4710	4710	4390	3640	4230	2800	2670	1980	9,6
3	Kg			10720	10720	8100	8100	6290	6150	5350	4520	4790	3430	4450	2710	2780	1870	9,7
2	Kg			6740	6740	10100	7910	7410	5620	6040	4240	5220	3280	4430	2590	2910	1800	9,7
1	Kg			4620	4620	8000	7350	8300	5270	6670	3980	5420	3140	4310	2450	3080	1810	9,6
0	Kg			4100	4100	7600	6100	8090	5000	6740	3820	5250	2970	4190	2360	3350	1640	9,4
-1	Kg	3320	3320	4100	4100	10500	6900	8780	4810	6510	3630	5000	2860	4080	2290	3520	1960	9,2
-2	Kg	5260	5260	8290	8290	11450	6790	8620	4720	6380	3540	4980	2820	4040	2230	3860	2170	8,7
-3	Kg	9430	9430	13030	11100	11000	6780	8530	4690	6310	3550	4890	2790			4030	2290	7,8
-4	Kg	14040	14040	11850	11090	9800	6780	7920	4720	6220	3520	4850	2790			4670	2670	7,3
-5	Kg	14880	14880	9730	9750	8200	6900	6680	4750	5290	3570					4870	3340	6,2

Boom: 5,8 m Arm: 2,40 Bucket: 0,85 m3 Shoe: 600 mm



LOAD POINT HEIGHT (m)		LOAD RADIUS												AT MAXIMUM REACH				
		2		3		4		5		6		7		8		Reach (m)		
6	Kg							4890	4890	4520	4520	4490	3720			3410	2630	8,5
5	Kg					6110	6110	5060	5060	4770	4770	4670	3680	3770	2760	3350	2310	9,1
4	Kg					7180	7180	5920	5920	5240	4750	4830	3590	4610	2740	3370	2130	9,2
3	Kg					8910	8560	6990	5990	5860	4470	5160	3430	4530	2650	3450	2010	9,3
2	Kg					10310	7790	8050	5490	6480	4170	5540	3250	4410	2560	3470	1960	9,3
1	Kg					7990	7250	8820	5150	6890	3930	5350	3110	4290	2480	3490	1960	9,2
0	Kg			4460	4460	6770	6770	8890	4910	6660	3770	5200	2970	4210	2380	3600	2020	9,1
-1	Kg			4620	4620	7870	6750	8730	4770	6470	3640	5110	2880	4130	2340	3840	2180	8,6
-2	Kg	6030	6030	6870	6870	10850	6760	8580	4740	6410	3580	5070	2830	4060	2310	4250	2410	8,0
-3	Kg	4410	4410	11450	11080	10030	6770	8360	4730	6370	3560	4960	2820			4500	2570	7,6
-4	Kg	2510	2510	10260	10260	8830	6810	7420	4760	6080	3580					4920	3040	6,6
-5	Kg	13280	13280	9300	9310	6920	6830	5700	4810							4540	3960	5,8

SERVICE & MAINTENANCE



Tilt-able Engine Hood And Pump Cover

- Pump cover which can be opened to sideways enables operator to access all the necessary maintenance points related to pump easily and quickly by spending less time and effort
- Tilt-able and pop-up engine hood and control valve upper cover can be opened easily and enables operator to access all necessary maintenance points related to engine, control valve, swing reduction gear and swing motor.

Bolt type cylinder head

- Bolt type cylinder head assembly for cylinders provides quick replacement of cylinder seal kit during the overhaul of the machine keeping the spare parts cost to a minimum.
- All sealed pins and bushings extend the life time of the linkages of the attachments by preventing the entry of dust or blockages and increases the time between service periods.



EQUIPMENT

Standard Equipment

Attachments

- Hydraulic operated joystick control
- 1175 mm standard bucket
- 2.94 m. arm

Electrical System

- Battery, 24 V,120 Ah
- Front head lights
- Visual and audible warning systems on main functions
- Warning horn
- Temperature, air filter clogging indicator

Engine System

- Air cleaner, dry type and radial seal
- Alternator 45 Ah
- Starting system thermal aid
- Turbocharged

FOPS Cab

- Cab recirculating fan
- Defroster
- Front windshield washer and wiper
- Fully equipped instrument panel
- Heater
- Left side door with lock
- Mirrors, exterior (2)
- Adjustable seat with seat belt and armrest
- Tinted glass
- Working lights, 2 front
- Tool box, external
- Cigarette lighter
- Ventilation openers
- Storage compartment
- Radio / CD Player

Optional Equipment *

Attachments

- 2,4 m. arm
- Special buckets
- Hammer Hydraulic circuit

Other

- Air condition
- Fuel transfer pump
- Windscreen protection
- Overload warning device
- Boom and arm safety valves
- Beacon
- Automatic lubrication system
- Extinguisher
- Sun visor
- Customized colors

(* Please contact with your CUKUROVA dealer for other optional equipment.

CE marked - All safety measurements are taken through the Machinery Directives 98/37/EC

-Illustrations and data may differ from standard equipment.
-Specifications are subject to change without notice.
-See your CUKUROVA dealer for available options.



ÇUKUROVA MAKİNA İMALAT ve TİCARET A.Ş.
Adana Yolu PK.61 33470 Tarsus - Mersin/TÜRKİYE
Phone: +90 324 616 26 78 • Fax: +90 324 616 32 20
www.cumitas.com info@cumitas.com

DEALER STAMP