



GARDEN TRACTOR

MT410

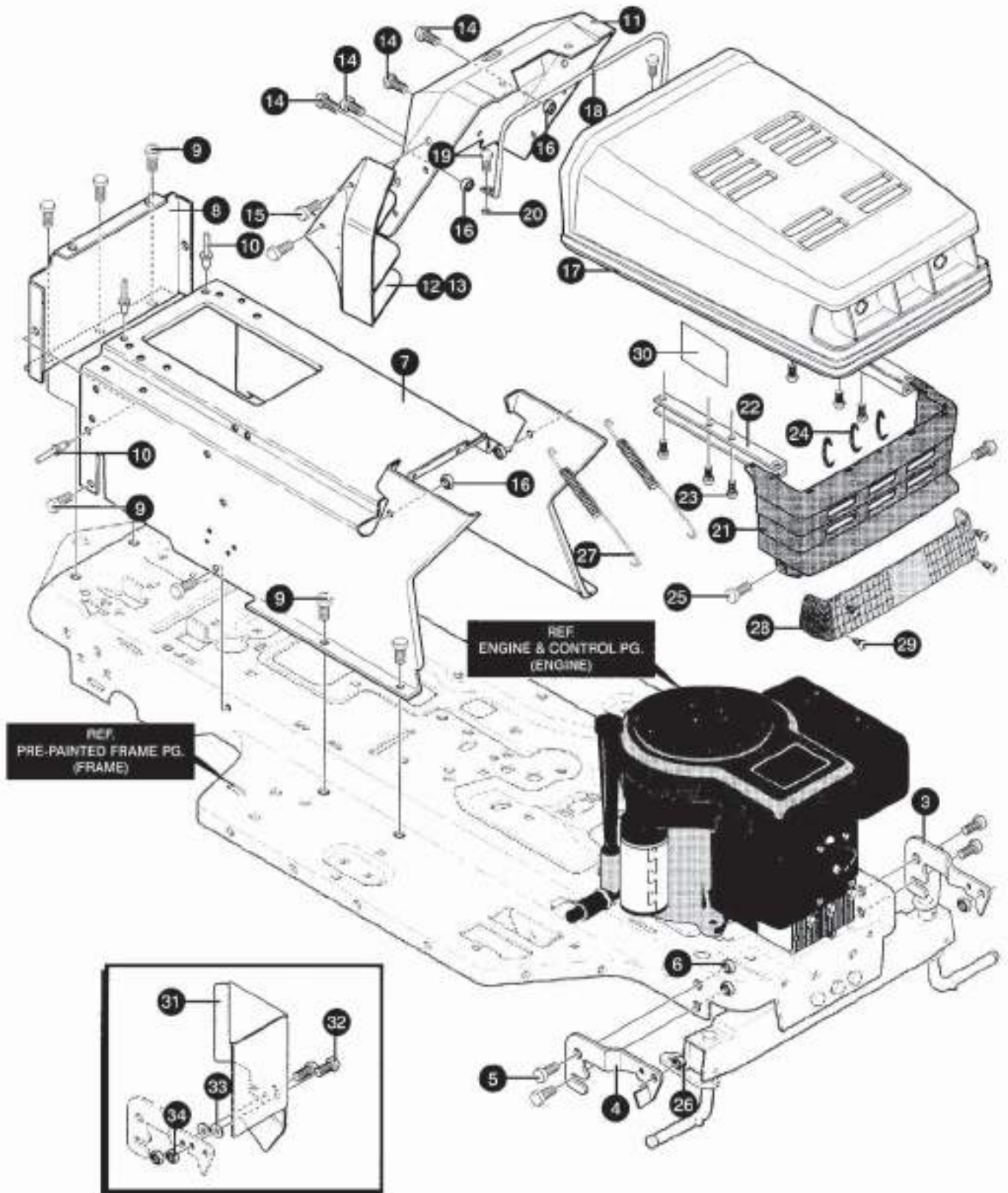
MT422

- A. Chassis & Hood Assembly
- B. Chassis Assembly
- C. Fender Assembly
- D. Frame Assembly
- E. Front Steering Assembly
- F. Mower Suspension Assembly
- G. Motion Drive Assembly
- H. Motion Drive Assembly
- I. Engine & Control Assembly
- J. Pre-Painted Deck Assembly
- K. Final Deck Assembly
- L. Electrical Assembly
- M. Decals Assembly
- N. Decals Assembly
- O. Customer Assembly
- P. Mulching Kit Assembly
- Q. Grass Catcher Assembly

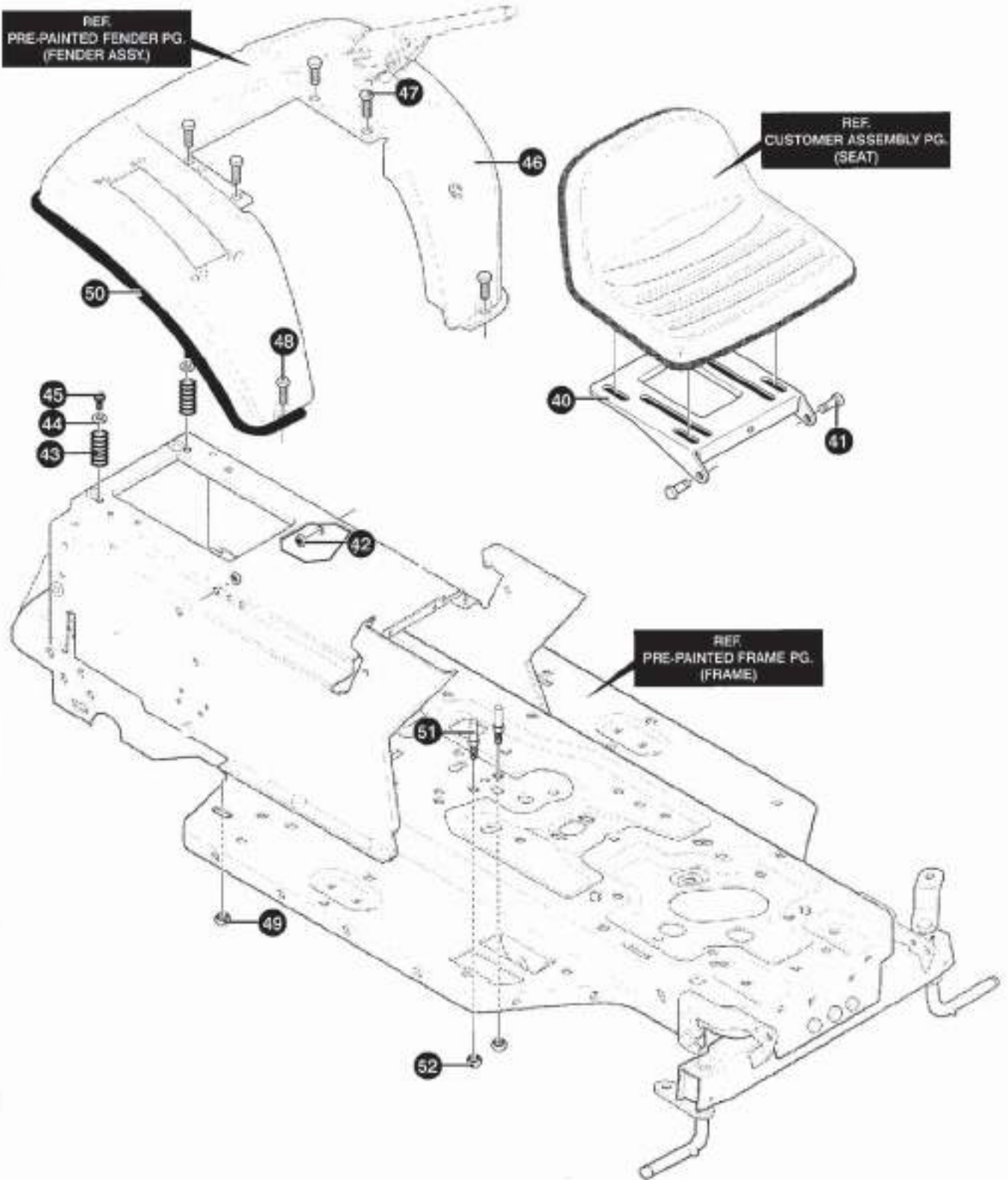
Illustration A

MT410, MT422

Chassis & Hood Assembly



KEY#	PART NUMBER	QTY	DESCRIPTION
3	6121 031 3003	1	BRACKET, GRILLE SUPPORT, RH
4	6121 031 3004	1	BRACKET, GRILLE SUPPORT, LH
5	6121 032 8154	4	SCREW, 5/16-18 X 1.0
6	9220 260 8210	4	NUT, 5/16-18
7	6121 030 9584	1	CONSOLE
8	6121 005 6235	1	CONSOLE, REAR COVER
9	9039 488 9010	11	SCREW, 1/4-20 X .50
10	6121 708 0410	4	RIVET, POP .187 DIA.
11	6121 032 1980	1	DASH
12	6121 030 2723	1	INSERT, DASH, LH
13	6121 030 2724	1	INSERT, DASH, RH
14	6121 071 0264	4	SCREW, 1/4-20 X .50
15	6121 027 4672	4	SCREW, 1/4-20 X .63
16	6121 005 0352	2	NUT, 1/4-20
17	6121 034 0883	1	HOOD
18	6121 030 7278	1	SUPPORT, HOOD
19	6121 030 1542	2	SCREW, 10-24 X 1.00
20	9220 260 8110	2	NUT, #10-24
21	6121 034 0884	1	GRILL
22	6121 000 9783	2	BRACKET, TIE.HOOD
23	6121 003 5055	6	SCREW, 10-24 X .50
24	6121 031 0203	3	CLIP, HOG RING C-SHAPED
25	6121 005 6676	2	BOLT, .375 X .580, 5/16-18
26	9214 320 1701	2	NUT, 5/16-18
27	6121 005 7478	1	SPRING, HOOD LATCH
28	6121 030 5716	1	LENS
29	6121 005 7796	4	SCREW, #6 X .50
30	6121 030 1452	1	FOIL, HEAT REFLECTOR
31	6121 031 2908	1	SHIELD, HEAT
32	9008 319 9046	2	SCREW, 1/4-20 X .75
33	6121 031 1245	2	WASHER, FLAT .250 X .75 X INSULATE
34	6121 005 1335	2	NUT, 1/4-20
	6121 071 1482	1	OPERATOR'S MANUAL MT422
	6121 034 0885	1	OPERATOR'S MANUAL MT410

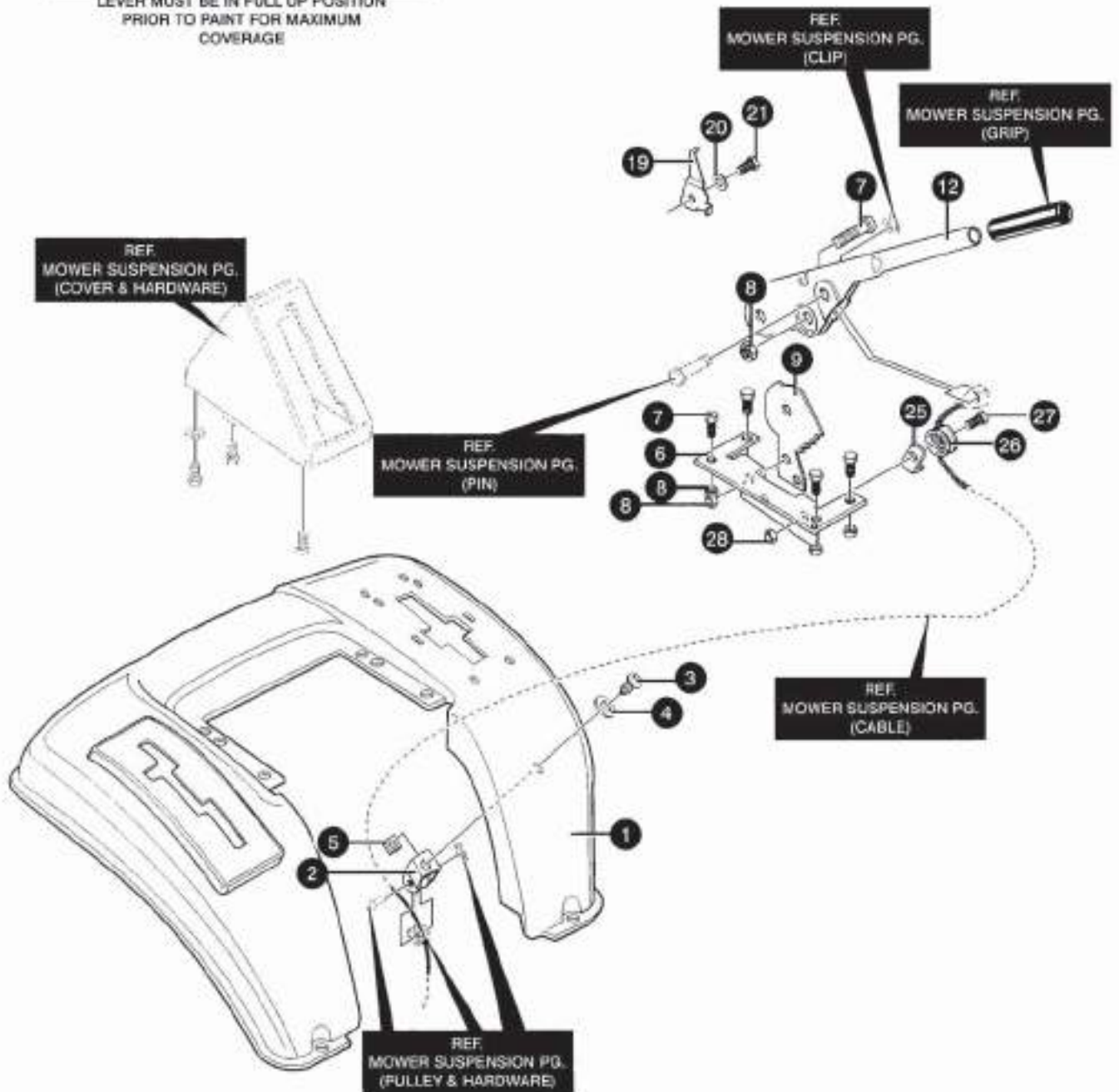


KEY#	PART NUMBER	QTY	DESCRIPTION
40	6121 033 1535	1	PLATE, SEAT
41	6120 703 9070	1	BOLT, .437 X .156, 5/16-18
42	9214 320 1701	2	NUT, 5/16-18
43	6121 033 0463	2	SPRING, SEAT 1.50OD X 2.25LG
44	6121 912 0392	2	WASHER, FLAT .281 X .63 X .065
45	6121 071 0264	2	SCREW, 1/4-20 X .50
46		*	FENDER ASSY
47	9039 488 9010	4	SCREW, 1/4-20 X .50
48	6121 912 6358	2	BOLT, 5/16-18 X 1.00
49	9220 260 8210	2	NUT, 5/16-18
50	6121 706 8100	1	TRIM STRIP MT410
51	6121 005 3446	2	PIN, 5/16-18 HOOD LATCH
52	9220 260 8121	2	NUT, 5/16-18

* ORDER INDIVIDUAL PARTS, SEE FENDER ASSEMBLY.

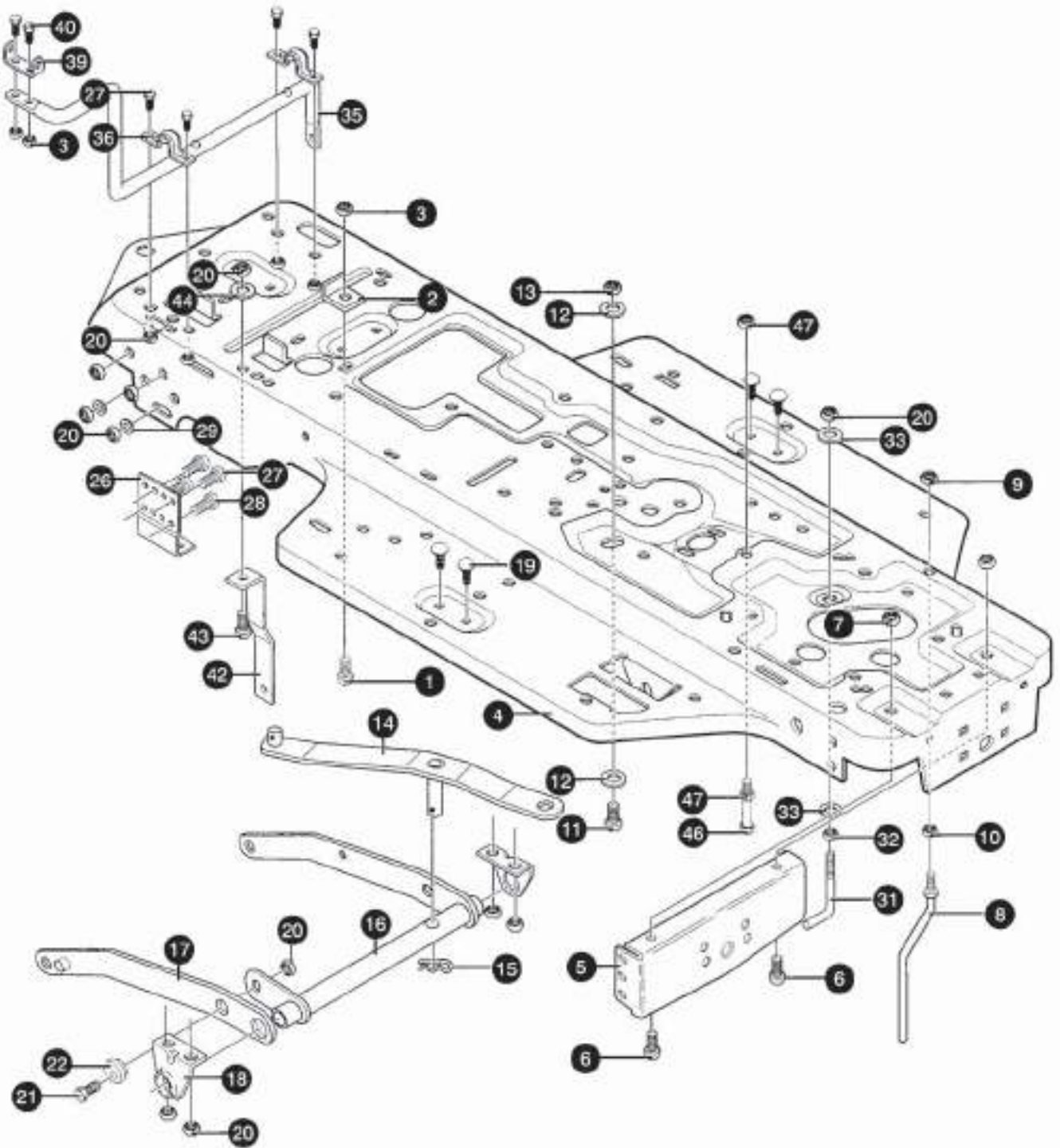
NOTE

LEVER MUST BE IN FULL UP POSITION
PRIOR TO PAINT FOR MAXIMUM
COVERAGE



KEY#	PART NUMBER	QTY	DESCRIPTION
1	6121 032 1156	1	FENDER
2	6121 703 6950	1	CLEVIS
3	9110 313 6010	1	SCREW, 5/16-18 X .56
4	6121 958 0200	1	WASHER, .344 X 1.50 X .09
5	9222 068 5010	1	NUT, 5/16-18
6	6121 703 6960	1	BRACKET, HGT/ADJUST SUPPORT
7	9008 319 9038	*	SCREW, 5/16-18 X .75
8	9214 320 1701	*	NUT, 5/16-18
9	6121 708 6200	1	QUADRANT, HEIGHT ADJUST
10	9008 319 9038	1	SCREW, 5/16-18 X .75
12	6121 703 6700	1	HANDLE, LIFT
19	6121 708 0200	1	POINTER, HEIGHT
20	6121 013 8479	1	WASHER, .195 X .41 X .03
21	9089 340 6010	1	SCREW, 8-32 X 3/8
25	6121 703 6970	1	BRKT, CABLE RETAIN
26	6121 704 2300	1	PULLEY, METAL
27	6121 704 1810	1	BOLT, .375 X .375, 1/4-20
28	6121 000 1502	1	NUT 1/4-20

* AS REQUIRED



KEY#	PART NUMBER	QTY	DESCRIPTION
1	9008 319 9048	1	SCREW, 1/4-20 X .75
2	6121 703 6970	1	LF BRKT, CABLE RETAIN
3	6121 000 1502	3	NUT, 1/4-20
4	6121 033 1173	1	MP FRAME, MAIN
5	6121 005 6362	1	MF BRKT, SUPPORT
6	9025 313 6010	2	SCREW, 5/16-18 X .75
7	9220 260 8210	2	NUT, 5/16-18
8	6121 005 0653	1	GUIDE, BELT
9	6121 004 1529	1	NUT, 3/8-16
10	9220 260 8118	1	NUT, 3/8-16
11	6121 918 0124	1	SCREW, 3/8-16 X 1.25
12	6121 912 0394	2	WASHER, FLAT .406 X .81 X .065
13	6121 994 5171	1	NUT, 3/8-16
14	6121 032 5587	1	WS STRAP ASSY
15	9340 003 0303	1	HAIR PIN .38 DIA. X 1.64L
16	6121 032 6114	1	LIFT ASSY, LH
17	6121 032 5130	1	LIFT ASSY, RH
18	6121 032 5495	2	MP BRACKET, REAR
19	6121 033 0967	4	BOLT, 5/16-18 X 1.00
20	9214 320 1701	*	NUT, 5/16-18
21	9008 319 9040	1	SCREW, 5/16-18 X 1.00
22	6121 995 8247	1	NUT
26	6121 032 6615	2	MP BRACKET, TRANSAXLE
27	9008 319 9038	*	SCREW, 5/16-18 X .75
28	6121 032 7917	4	SCREW, 5/16-18 X 1.50
29	6121 007 3787	4	WASHER, FLAT .330 X .75 X .1793
31	6121 004 9896	1	BELT GUIDE
32	9220 260 8121	1	NUT, 5/16-18
33	6121 012 0393	2	WASHER, FLAT .344 X .69 X .065
35	6121 031 9113	1	LEVER, SHIFT
36	6121 030 2760	2	MS, MF CLAMP .625DIA.
39	6121 931 0356	1	LF BRKT, PIVOT
40	9008 319 9046	2	SCREW, 1/4-20 X .75
42	6121 030 9770	1	MF BRKT, STABILIZER
43	6121 993 5498	1	SCREW, 5/16-18 X .88
44	6121 012 0638	1	WASHER .328 X .60 X .09
46	6121 004 9930	1	SCREW, 3/8-16 X 7.50
47	9214 320 1703	2	NUT, 3/8-16

* AS REQUIRED

Illustration E

MT410, MT422

Front Steering Assembly

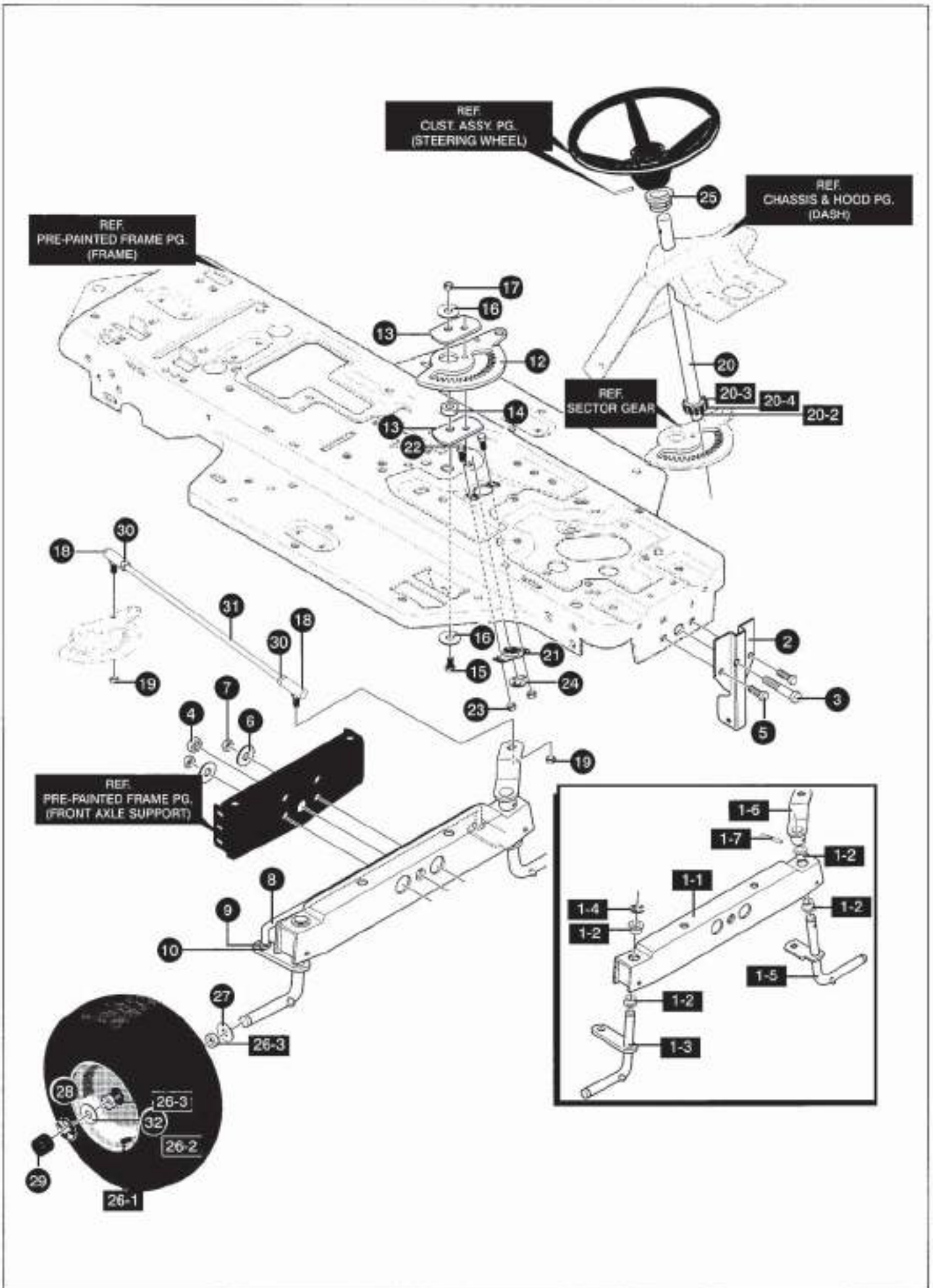


Illustration E

MT410, MT422

Front Steering Assembly

KEY#	PART NUMBER	QTY	DESCRIPTION
1-1	6121 031 2280	1	FRONT AXLE MT410 - MT422
1-2	6121 005 0546	4	BRNG, FL .759 X 1.002 X .75
1-3	6121 031 0368	1	SPINDLE, ASSY, RH LONG
1-4	9460 624 5015	1	E-RING .574ID X .050/.750
1-5	6121 031 0367	1	SPINDLE, ASSY, LH
1-6	6121 032 7619	1	MS ARM ASSY SF 4WS FRNT STRNG
1-7	6121 045 4565	1	PIN, SPRING .250DIA. X 1.25LG
2	6121 033 8083	1	BRACKET, HANGER MT422
3	6121 005 0720	1	BOLT, 1/2-20
3	6121 002 9616	1	BOLT .625 X 1.890
4	6121 927 4654	1	NUT, 1/2-20
5	9007 319 9214	4	SCREW, 3/8-16 X 3.00
6	6121 078 2214	4	WASHER, BELLVILE
7	9214 320 1703	4	NUT, 3/8-16
8	6121 030 2688	1	TIE ROD
9	6121 912 0394	4	WASHER, FLAT .406 X .81 X .065
10	6121 913 7185	2	PIN, COTTER .125DIA X1.00LG
12	6121 032 7399	1	GEAR, SECTOR
13	6121 033 3289	2	PLATE SECTOR
14	6121 033 0021	1	BUSHING, SECTOR GEAR
15	6121 018 1643	1	SCREW, 3/8-24 X 1.50
16	6121 999 9845	2	WASHER, FLAT .390 X 1.25 X .119
17	6121 941 2349	1	NUT, 3/8-24
18	6121 700 4900	2	BALL JOINT 3/8
19	6121 941 2349	2	NUT, 3/8-24
20	6121 032 7395	1	SHAFT, PINION-STEERING
20-2	6121 032 7737	1	PINION-STEERING
20-3	6121 032 7740	1	WASHER, FLAT .755 X 1.17 X .100
20-4	6121 031 3904	1	RING, RETEX
21	6121 032 5692	1	BRNG, FL .50ID X 1.37ODX
22	6121 032 6505	2	SCR 1/4-20X.75
23	6121 004 6931	2	NUT, 1/4-20
24	9460 624 5016	1	RING RET E
25	6121 054 0902	1	BEARING FLANGE
26-1	6121 033 8512	2	VALVE STEM
26-2	6121 033 8172	2	RIM, WHEEL
26-3	6121 033 8513	2	BEARING
27	6121 071 0131	2	WASHER, FLAT .755ID
28	9460 624 5015	2	E-RING .574ID X .050/.750SH
29	6121 004 0394	2	HUB CAP SMALL BLACK
	6120 704 3700	2	HUB CAP LARGE GREY
30	9208 260 6018	2	NUT, 3/8-24
31	6121 005 6190	1	DRAG LINK
32	6121 994 2815	2	WASHER, FLAT .755 X 1.53 X .07

* ORDER INDIVIDUAL PARTS – ASSEMBLY NOT AVAILABLE

Illustration F

MT410, MT422

- Mower Suspension Assembly

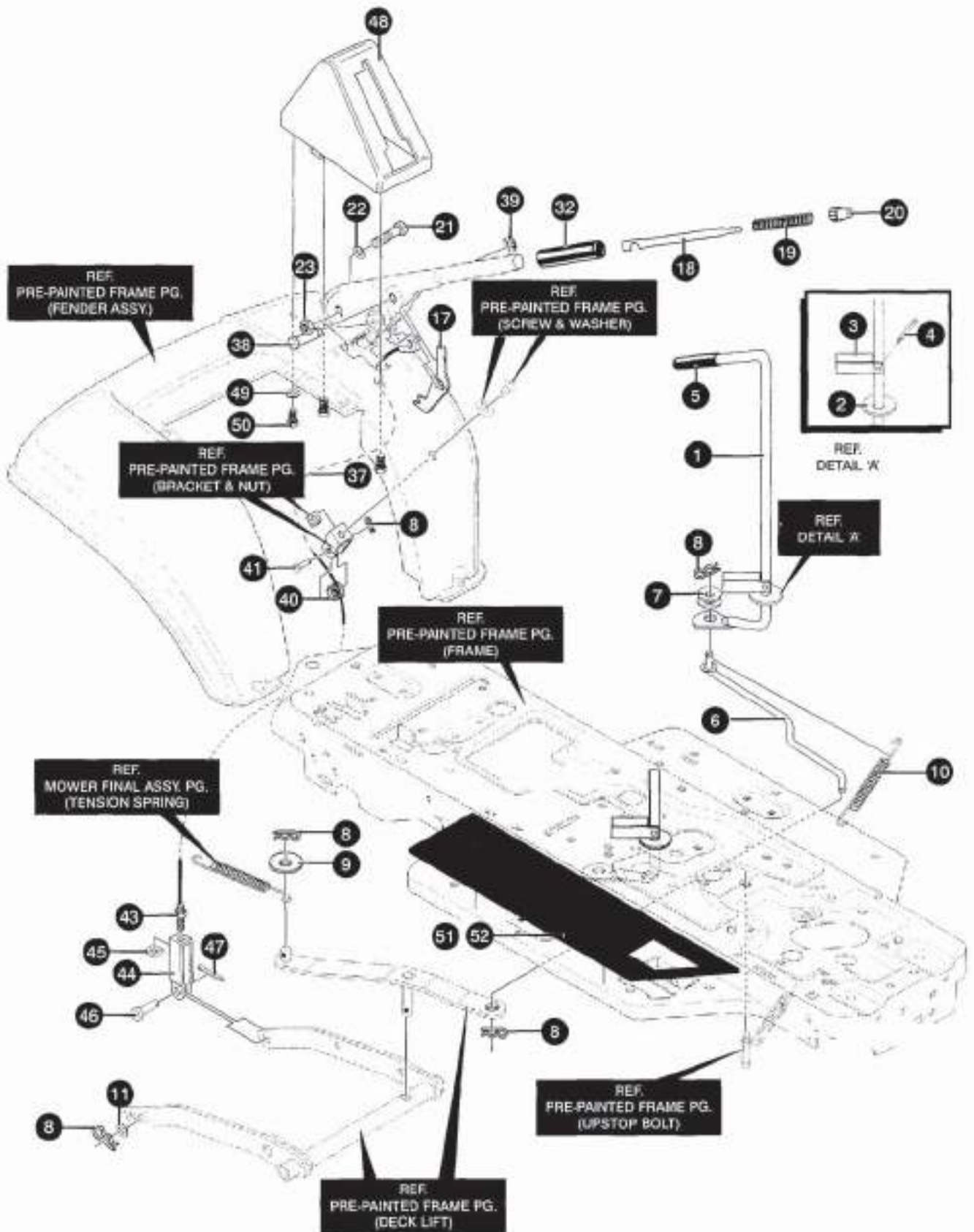


Illustration F

MT410, MT422

Mower Suspension Assembly

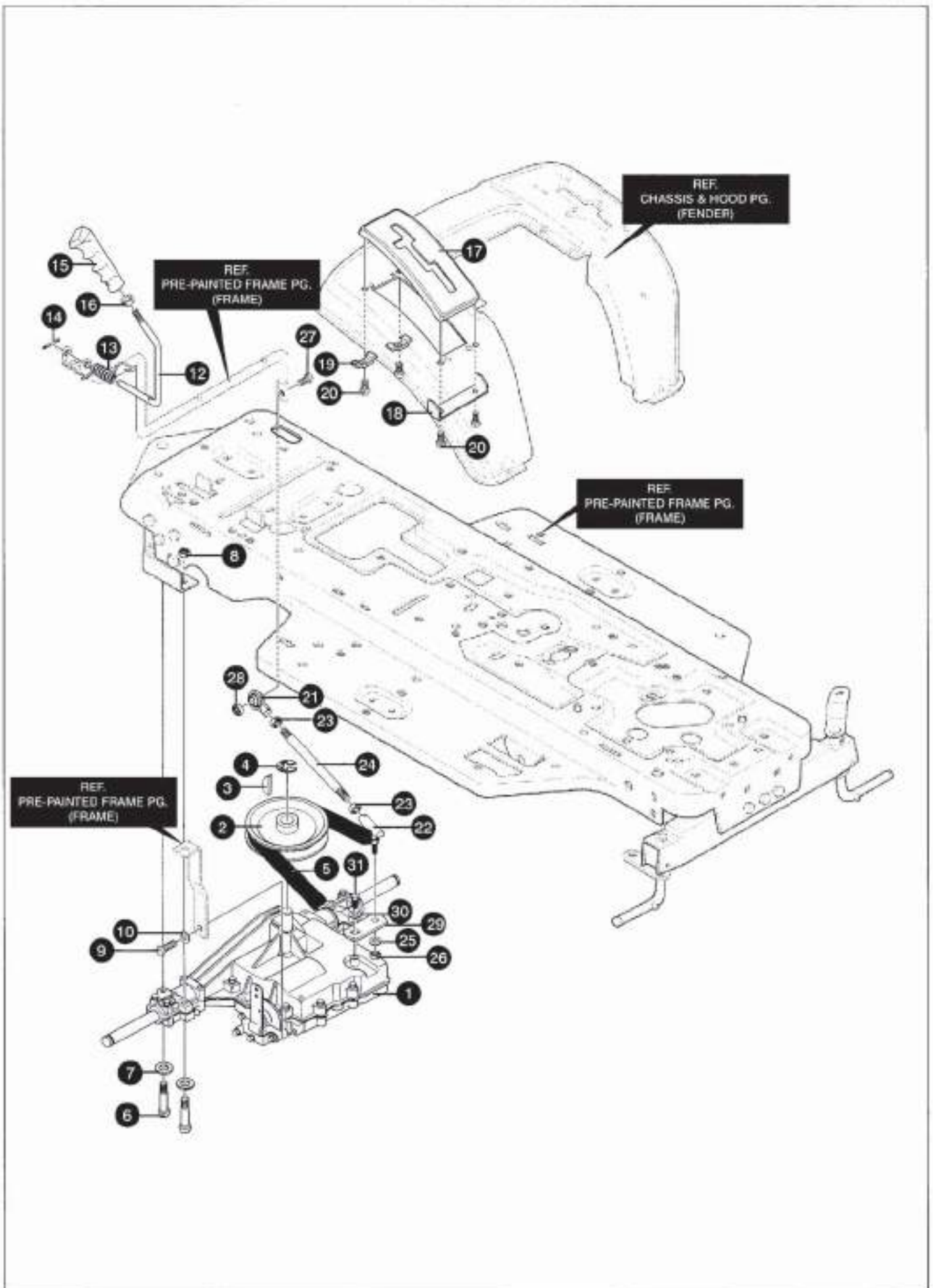
KEY#	PART NUMBER	QTY	DESCRIPTION
1	6121 032 5592	1	LEVER, CLUTCH RH
2	6121 708 9310	1	WASHER, FLAT .515 X 1.38 X 119PL
3	6121 030 5225	1	STOP, PTO ENGAGE
4	6121 032 6386	1	PIN
5	6121 033 1624	1	KNOB, SLIP
6	6121 032 5590	1	ROD, BELCRANK LINK
7	6121 027 4517	2	WASHER
8	9340 003 0303	*	PIN, HAIR .38DIA X 1.64
9	6121 002 5210	1	WASHER, FLAT .386 X 1.25 X .09
10	6121 032 5802	1	SPRING, .69 X 7.75 X .0897 TENSION
11	6121 041 7098	2	WASHER, FLAT .531 X 1.06 X .063
15	9008 319 9038	1	SCREW, 5/16-18 X .75
16	9214 320 1701	1	NUT, 5/16-18
17	6121 708 6210	1	PAWL, SQUARE
18	6121 703 1700	1	ROD, ACTUATOR-SHORT
19	6121 703 6400	1	SPRING, HEIGHT ADJUST
20	6121 708 2000	1	KNOB, HEIGHT ADJUST
21	6121 703 9020	1	BOLT, .500 X .270, 5/16-18
22	6121 708 9311	1	WASHER, FLAT .506 X .75 X .024
23	6121 071 0205	1	NUT, 5/16-18
32	6121 703 1300	1	GRIP, .750OD W/HOLE BLACK
37	6121 005 7511	1	LIFT CABLE
38	6121 703 8400	1	PIN, CLEVIS
39	9460 624 5005	1	RING, RET E
40	6121 704 2300	1	PULLEY, METAL
41	6121 703 6980	1	PIN, CLEVIS
43	9210 260 0772	1	NUT, 1/4-20
44	6121 703 6981	1	LF CLEVIS, LIFT CABLE
45	9222 068 5012	1	NUT, 1/4-20
46	6121 703 8420	1	PIN, CLEVIS .312 X .812
47	9395 021 1140	1	PIN, COTTER .090DIA. X .75
48	6121 033 3903	1	LIFT COVER, BLACK
49	6121 912 0392	1	WASHER, FLAT .281 X .63 X .065
50	9104 007 4350	3	SCREW, #10 X .75
51	6121 033 1834	1	FOOT PAD, RH
52	6121 033 1835	1	FOOT PAD, RH

* AS REQUIRED

Illustration G

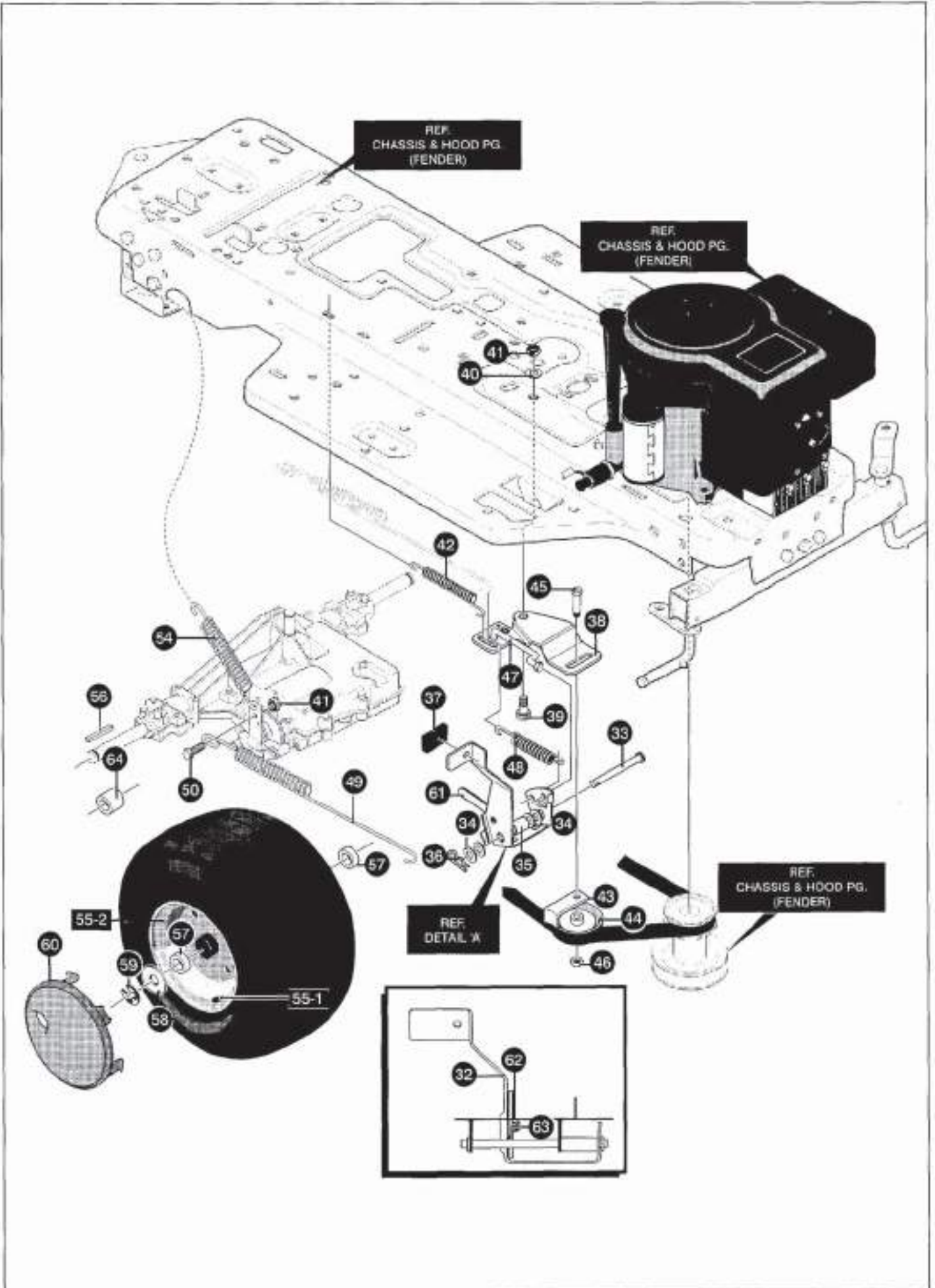
MT410, MT422

Motion Drive Assembly



KEY#	PART NUMBER	QTY	DESCRIPTION
1		*	TRANSAXLE
2	6121 030 3109	1	PULLEY, 6.6 OD V4L
3	6121 995 0795	1	KEY, HI-PRO 606
4	6121 992 2053	1	RING, RETEX .58 X .035
5	6121 033 8017	1	DRIVE BELT, MT410 - MT422
6	6121 918 0091	4	SCREW, 5/16 -18 X 2.50
7	6121 012 0393	4	WASHER, FLAT .344 X .69 X .065
8	9214 320 1701	4	NUT, 5/16-18
9	6121 993 5498	1	SCREW, 5/16-18 X .88
10	6121 012 0638	1	WASHER, .328 X .60 X .09
12	6121 030 9635	1	LEVER, SHIFT UPPER MT410
12	6121 032 4798	1	LEVER, SHIFT UPPER MT422
13	6121 031 0265	1	SPRING, TORS. .56 X .95 X .095
14	6121 913 7185	1	PIN, COTTER .125DIA X 1.00LG
15	6121 930 6690	1	HANDLE
16	6121 912 0238	1	NUT, 1/2-13
17	6121 031 1209	1	COVER PLASTIC LF
18	6121 931 1257	1	BRACKET COVER
19	6121 703 6940	2	CLAMP, SPRG 1.17"ID
20	6121 931 1331	4	SCREW, 1/4-15 X .44/.53
21	6121 930 4260	1	BALL JOINT, RH 3/8-24
22	6121 700 4400	1	BALL JOINT 3/8
23	9208 260 6018	2	NUT, 3/8-24
24	6121 032 9056	1	SHIFT ROD
25	6121 012 0382	1	WASHER, .393 X .68 X .10
26	9210 260 0752	1	NUT, 3/8-24
27	6121 993 9573	1	SCREW, 3/8-24 X 1.00
28	6121 941 2349	1	NUT, 3/8-24
29	6121 930 9637	1	BRKT, SHIFT
30	6121 995 7157	1	WASHER, .750 X .250
31	6121 995 6255	1	SCREW, 1/4-28 X .750

* CONTACT YOUR NEAREST TRANSAXLE DEALER FOR PARTS & SERVICE



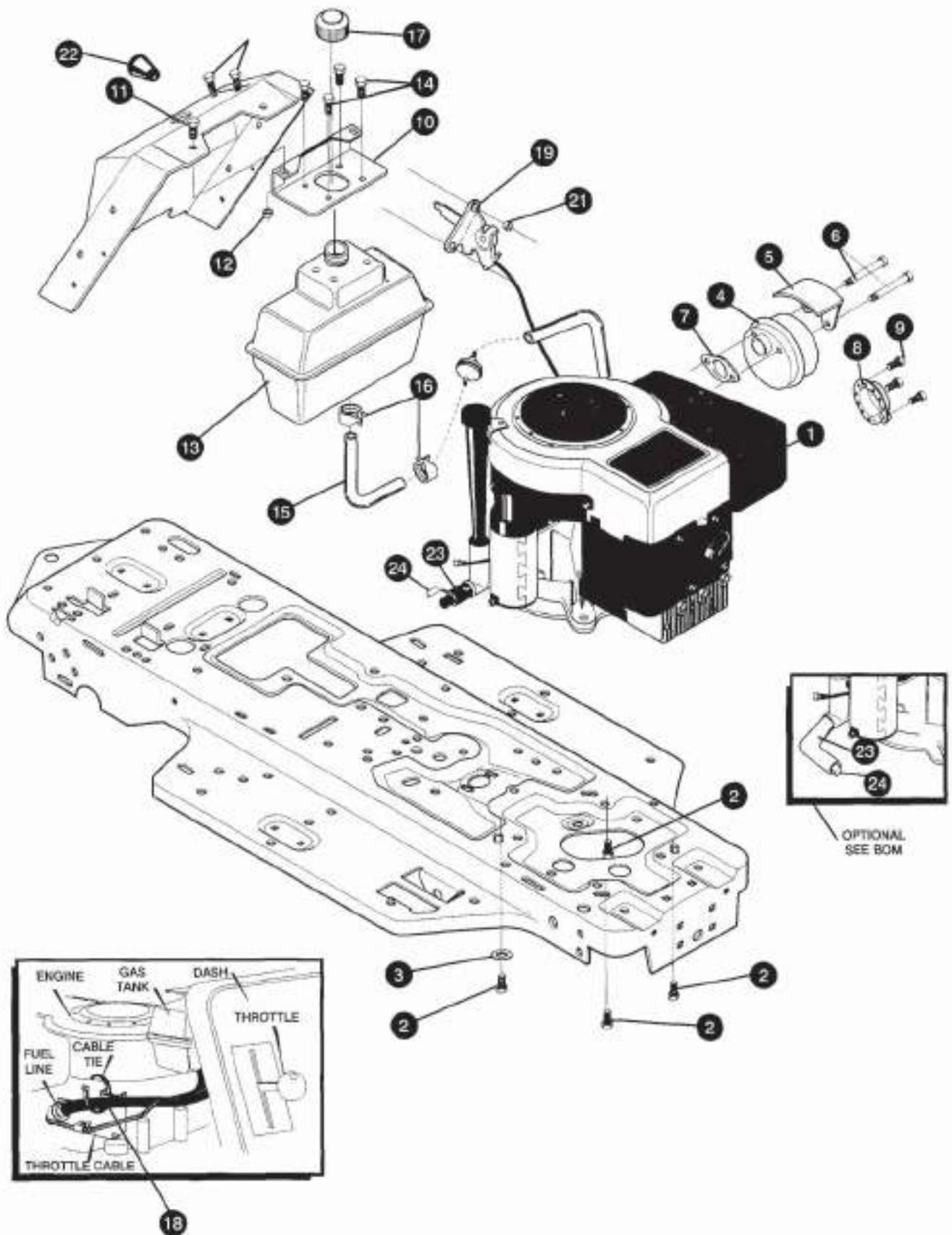
KEY#	PART NUMBER	QTY	DESCRIPTION
32	6121 033 1438	1	PEDAL, BRAKE, CLUTCH
33	6121 031 9676	1	PIN, CLEVIS .500D X 4.87LG
34	6121 999 2968	4	WASHER, FLAT .504 X .75 X .059
35	6121 033 1972	1	SPACER, SLEV .53 X .62 X 1.240
36	6121 995 6180	1	PIN, HAIR .53DIA X 1.62LG
37	6121 004 8761	1	PAD, CLUTCH/BRAKE PEDAL
38	6121 032 1969	1	IDLER ARM BRKT TRACTION
39	6121 932 9989	1	BOLT, .625 X .135, 5/16-18
40	6121 994 5602	4	WASHER, FLAT .333 X .87 X .119
41	9214 320 1701	*	NUT, 5/16-18
42	6121 032 7867	1	SPRING, 3/4OD C 7.75 X .091
43	6121 993 9659	1	RETAINER, BELT
44	6121 993 5374	1	PULLEY, IDLER
45	6121 994 5892	1	BOLT, 3/8-16 X 1.50
46	9214 320 1703	1	NUT, 3/8-16
47	6121 033 3175	1	CLUTCH ROD ASSY
48	6121 032 6780	1	SPRING, 3/8OD X 2.18 X .055
49	6121 033 4175	1	SPRING, BRAKE
50	6121 932 6131	1	BOLT, .495 X .31, 5/16-18
54	6121 078 2223	1	SPRING
55			NOT STOCKED
55-1	6121 033 8512	2	VALVE STEM
55-2	6121 033 8172	2	RIM, WHEEL
55-3			NOT STOCKED
56	6121 995 2928	2	KEY, SQUARE .187SQ X 2.25LG
57	6121 071 0131	4	WASHER, FLAT .755ID
58	6121 994 2815	2	WASHER, FLAT .755 X 1.53 X .07
59	9460 624 5015	2	E-RING .574ID X .050/.750SH 11 X 3
60	6121 930 4441	2	HUB CAP, 1.500ID X 7/8LG
61	6121 000 9016	1	LEVER, PARK BRAKE
62	6121 005 7828	1	SPRING, PARKING BRAKE
63	6121 005 7829	1	RIVET, SHSET
64	6121 071 0352	2	SPACER MT422
64	6121 033 8184	2	SPACER MT410

* AS REQUIRED

Illustration I

MT410, MT422

Engine & Control Assembly

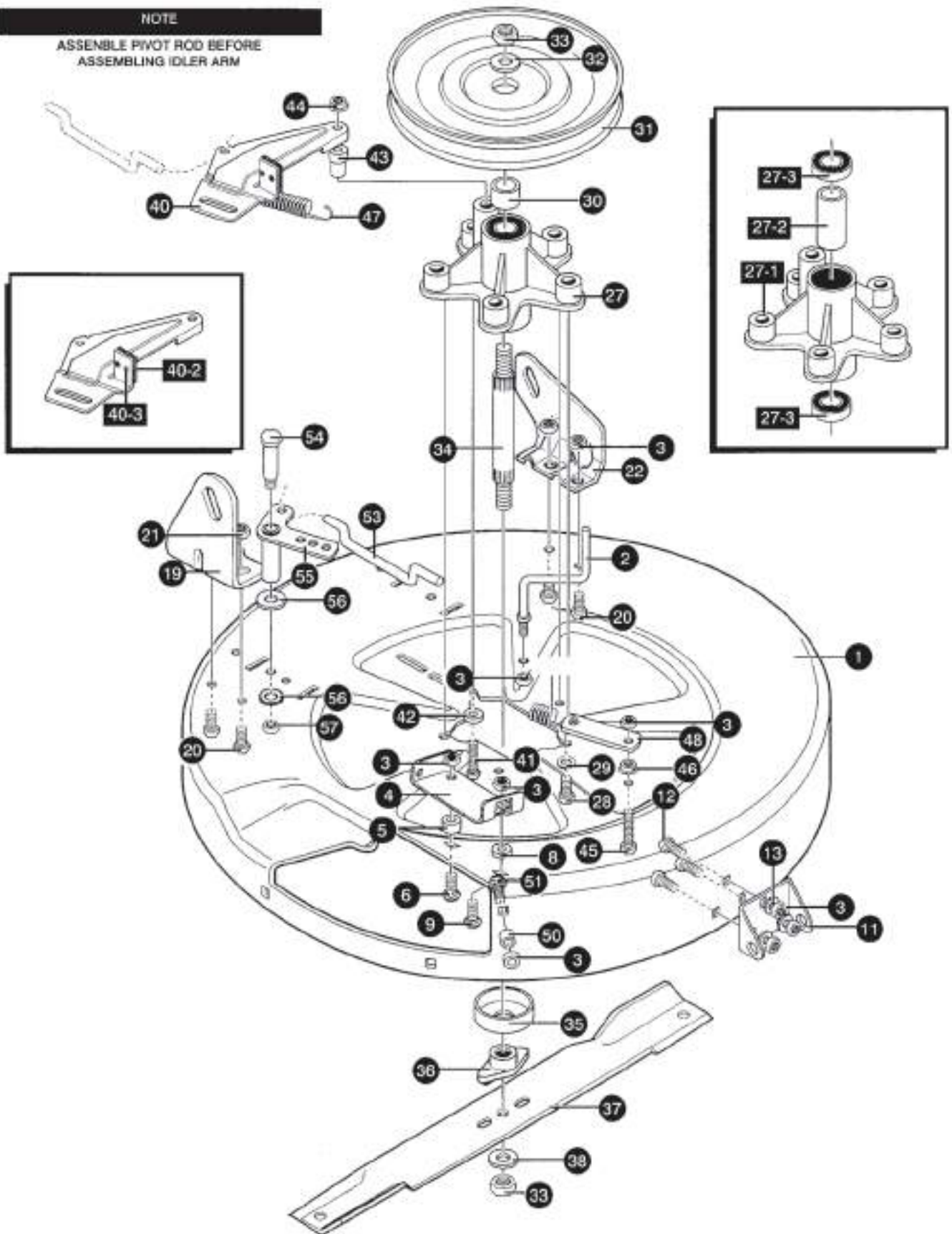


KEY#	PART NUMBER	QTY	DESCRIPTION
1		*	ENGINE, 12HP IC
2	9039 488 9014	4	SCREW, 3/8-16 X 1.25
3	6121 013 8489	1	WASHER, .384 X .69 X .04
4	6121 005 7908	1	MUFFLER-ROUND
5	6121 141 8100	1	SHIELD, HEAT
6	6121 005 4980	2	SCREW, 5/16-18 X 3.50
7	6121 149 0600	1	GASKET, MUFFLER
8	6121 005 6472	1	DEFLECTOR SIDE OUT
9	9089 340 6010	3	SCREW, 8-32 X 3/8
10	6121 030 2814	1	BRACKET, GAS TANK
11	9008 319 9046	2	SCREW, 1/4-20 X .75
12	9214 320 1705	2	NUT, 1/4-20
13	6121 031 4989	1	TANK, FUEL 1 GAL
14	6121 030 0303	4	SCREW, .25 X .75 X 5.1
15	6121 004 1007		TUBING
16	0000 998 9100	2	CLAMP, HOSE SCREW TYPE
17	6121 004 6704	1	CAP, GAS 1-1/2-7
18	0000 988 9200	1	TIE, CABLE BLACK NYLON
19	6121 032 0031	1	THROTTLE CONTROL
20	6121 027 4707	2	SCREW, 10-24 X .50
21	9220 260 8110	2	NUT, #10-24
22	6121 005 0607	1	KNOB, ROUND THROTTLE
23	6121 020 9300	1	OIL DRAIN VALVE
24	6121 021 1500	1	CAP

* SEE ENGINE MANUAL

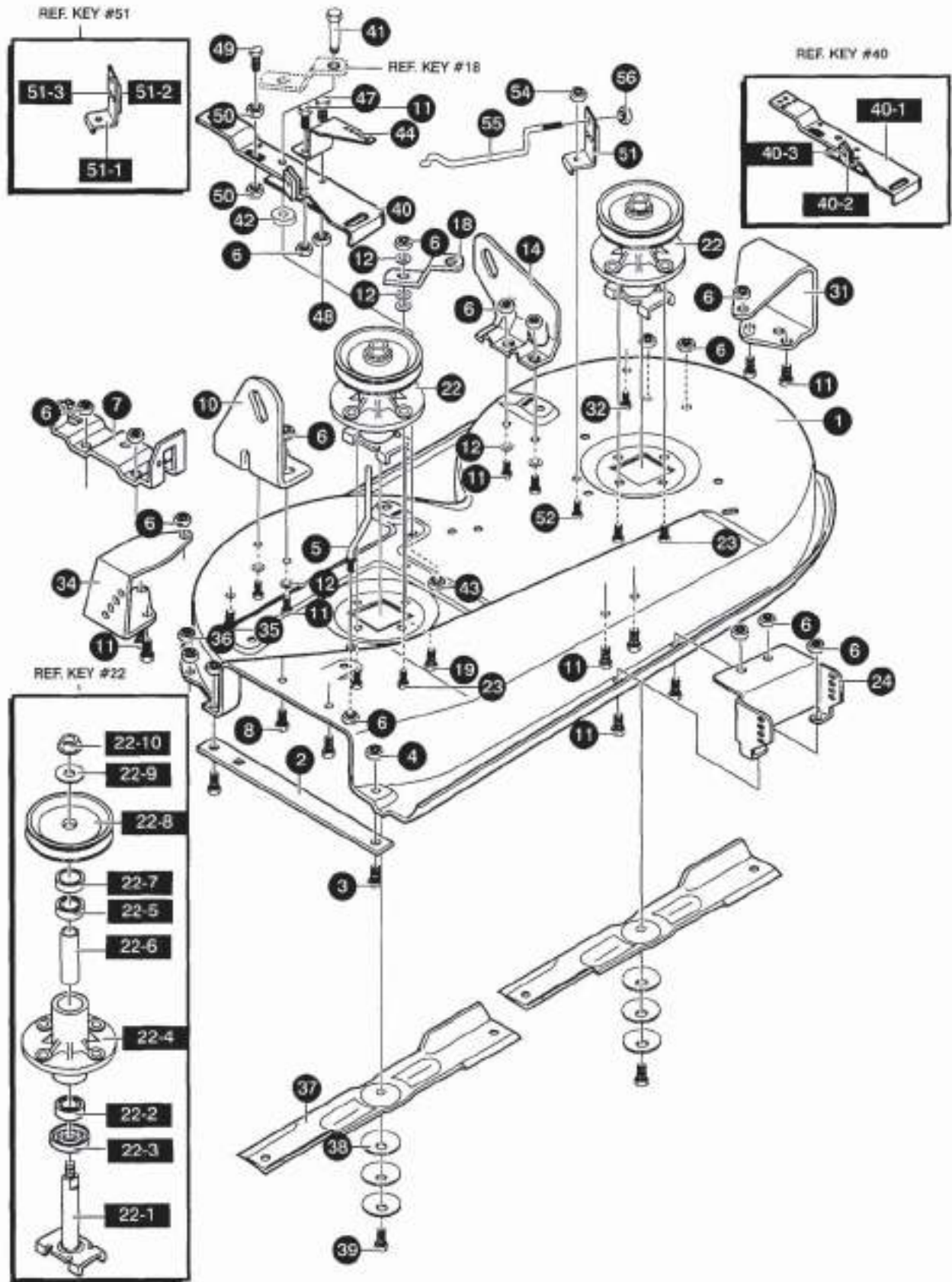
NOTE

ASSEMBLE PIVOT ROD BEFORE
ASSEMBLING IDLER ARM



KEY#	PART NUMBER	QTY	DESCRIPTION
1	6121 032 1982	1	DECK, MOWER 30"
2	6121 005 7318	1	GUIDE, BELT
3	9214 320 1701	*	NUT, 5/16-18
4	6121 931 7017	1	BRACKET CHUTE MOUNT
5	6121 931 4702	1	SPACER, SLEV
6	6121 012 0230	1	BOLT, 5/16-18 X 1.25
8	6121 994 5602	1	WASHER, FLAT .333 X .87 X .119
9	6121 012 6216	1	BOLT, 5/16-18 X .75
11	6121 031 1237	1	BRACKET, MOUNTING, FRONT
12	9027 068 5212	3	BOLT, 5/16-18 X .63
13	6121 012 0393	3	WASHER, FLAT .344 X .69 X .065
19	6121 033 7910	1	BRACKET, DECK LIFT RH
20	9008 319 9038	4	SCREW, 5/16-18 X .75
22	6121 931 0667	1	BRACKET, DECK LIFTREAR LH
27	6121 031 3588	1	QUILL ASSY MT422
27-1	6121 031 4272	1	QUILL HSG
27-2	6121 031 4274	1	TUBE, SPACER
27-3	6121 031 3576	2	BEARING, BALL
28	6121 993 5498	5	SCREW, 5/16-18 X .75
29	6121 013 8485	5	WASHER, .320 X .61 X .03
30	6121 032 1146	1	SPACER, SLEV .790 X 1.250 X .500
31	6121 031 4273	1	PULLEY - QUILL
32	6121 708 9310	1	WASHER, FLAT .515 X 1.38 X .119
33	6121 071 0223	*	NUT, 1/2-13
34	6121 032 1144	1	SHAFT, QUILL
35	6121 031 3577	1	SHIELD, DUST, BEARING
36	6121 031 3584	1	HUB, BLADE ADAPTOR
37	6121 702 1100	1	MOWING BLADE
38	6121 708 9310	1	WASHER, FLAT .515 X 1.38 X .119
40	6121 001 2229	1	BRACKET, IDLER ASSEMBLY
40-2	6121 930 6973	1	BRAKE PAD
40-3	6121 994 1601	2	RIVET
41	6121 918 0113	1	SCREW, 5/16-18 X 3.00
42	6121 994 5602	1	WASHER, FLAT .333 X .87 X .119
43	6121 032 1145	1	SPACER, SLEV .322 X .63 X 2.310
44	6121 071 0205	1	NUT, 5/16-18
45	9008 319 9040	1	SCREW, 5/16-18 X 1.00
46	6121 071 0205	1	NUT, 5/16-18
47	6121 078 2223	1	SPRING
48	6121 030 2357	1	MF LINK
50	6121 005 0520	1	SPACER
51	6121 012 6216	1	BOLT, 5/16-18 X .75
53	6121 033 7628	1	ROD, IDLER PIVOT
54	6121 930 4420	1	BOLT, .500 X 2.15
55	6121 033 7621	1	IDLER PIVOT ASSY
56	6121 099 6416	2	WASHER, FLAT .391 X 1.00 X .125
57	9214 320 1703	1	NUT, 3/8-16

* AS REQUIRED

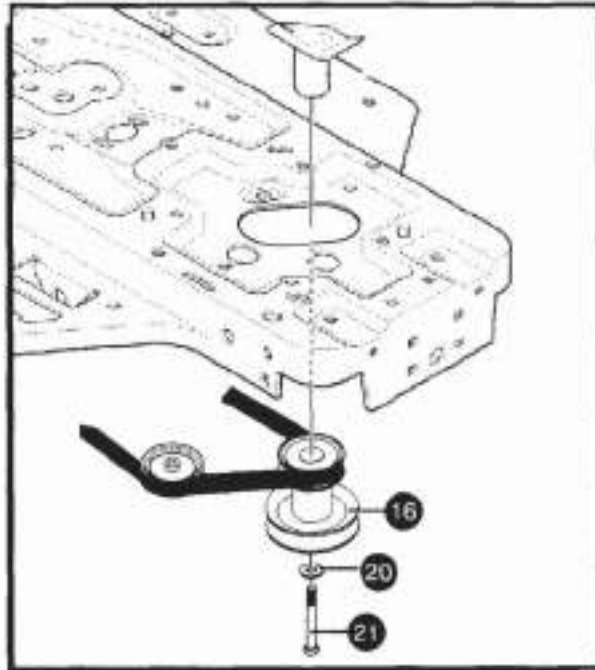


KEY#	PART NUMBER	QTY	DESCRIPTION
1	6121 032 5106	1	38" DECK
2	6121 032 6295	1	BAR, SKID
3	6121 012 6216	2	BOLT, 5/16-18 X .75
4	9220 260 8121	2	NUT, 5/16-18
5	6121 005 7318	1	GUIDE, BELT
6	9214 320 1701	*	NUT, 5/16-18
7	6121 031 3928	1	BRACKET, CHUTE
8	9008 319 9044	2	SCREW, 5/16-18 X .50
10	6121 931 3929	1	BRACKET, RH LIFT REAR
11	9008 319 9038	*	SCREW, 5/16 X .75
12	6121 012 0393	*	WASHER, FLAT .344 X .69 X .065
14	6121 931 0667	1	BRACKET, LH LIFT REAR
18	6121 031 5302	1	BRACKET, IDLER SUPPORT
19	6121 930 0345	1	SCREW, 5/16-18 X 1.38
22	6121 033 7733	2	QUILL ASSEMBLY
22-1	6121 995 6425	1	SHAFT/SADDLE
22-2	6121 000 1255	1	BEARING, BALL
22-3	6121 995 0616	1	DUST SHIELD
22-4	6121 005 0702	1	QUILL CASTING
22-5	6121 000 1255	1	BEARING, BALL
22-6	6121 995 0818	1	SPACER, SLEEVE
22-7	6121 033 1067	1	SPACER, QUILL
22-8	6121 033 3132	1	PULLEY, QUILL
22-9	6121 995 6365	1	WASHER, SPECIAL QUILL
22-10	6121 999 1282	1	NUT, 7/16-20
23	6121 993 5498	7	SCREW, 5/16-18 X .75
24	6121 031 2526	1	SUPPORT, LIFT DECK FRONT
31	6121 031 2477	1	BRACKET, LH WHEEL
34	6121 030 0102	1	WHEEL BRACKET, RH
37	6121 030 9069	2	MOWING BLADE MT410
37-1	6121 030 6932	2	HI LIFT BLADE MT410
37-2	6121 032 6160	2	MULCHER BLADE MT410
38	6121 078 2214	6	WASHER, 391D X 1.25D X .07
39	6121 993 9573	2	SCREW, 3/8-24 X 1.00
40	6121 030 0491	1	IDLER ARM ASSEMBLY
40-1	6121 030 0490	1	IDLER ARM
40-2	6121 930 6973	1	BRAKE PAD
40-3	6121 030 0180	1	BOLT, 50 X 1.88
42	6121 099 6416	1	WASHER, FLAT .391 X 1.00 X 1.25
43	6121 994 5171	1	NUT, 3/18-16
44	6121 932 6249	1	BRACKET, EXTENSION IDLER
47	9008 319 9046	1	SCREW, 1/4-20 X .75
48	6121 000 1502	1	NUT, 1/4-20
49	6121 012 1954	1	SCREW, 1/4-20 X 2.00
50	9220 260 8115	2	NUT, 1/4-20
51	6121 030 3247	1	BLADE BRAKE ASSY
51-1	6121 030 3246	1	BRAKE - ARM
51-2	6121 030 6973	1	BRAKE - PAD
51-3	6121 913 5624	2	BRAKE - RIVET
52	9008 319 9038	1	SCREW 5/16-18 X .75
54	6121 033 6171	1	NUT 5/16
55	6121 030 0316	1	ROD - BRAKE RELEASE
56	6121 000 1502	1	NUT 1/4"

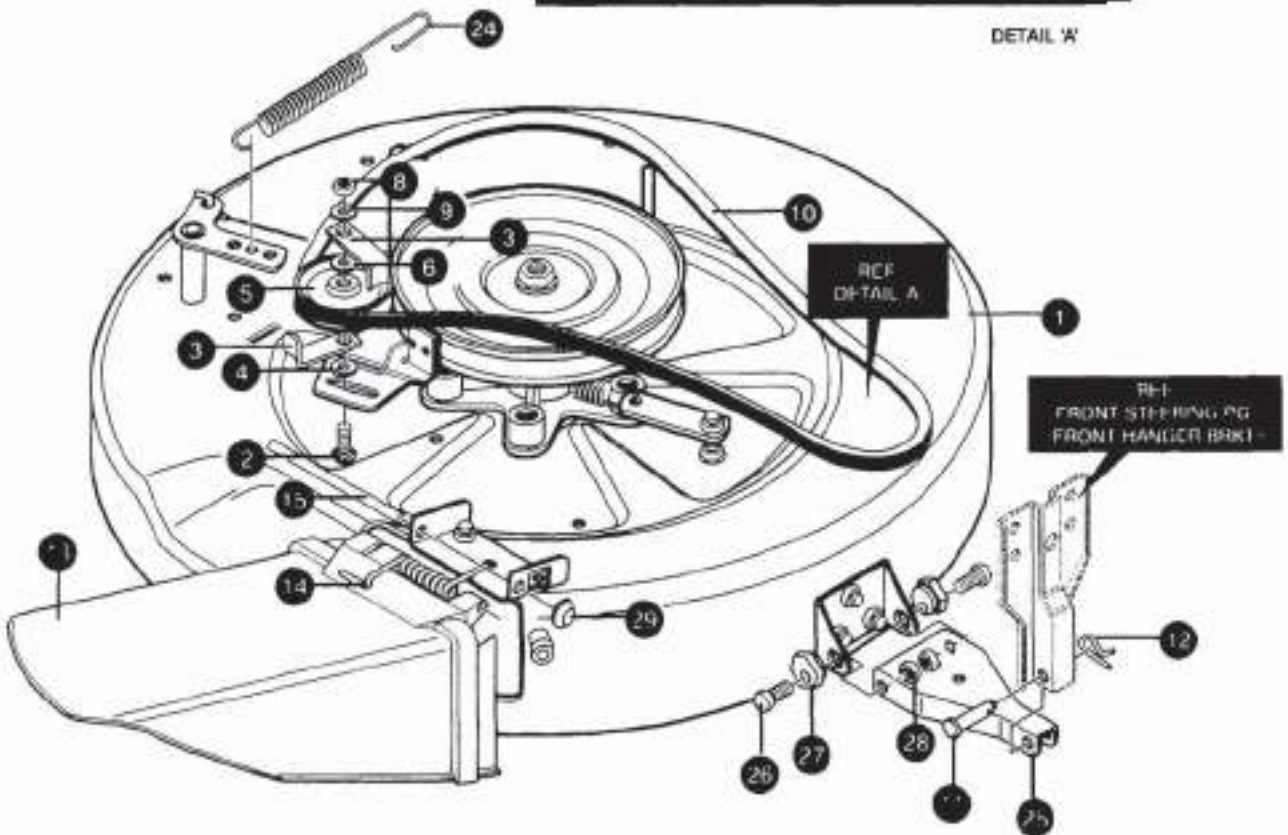
* AS REQUIRED

NOTE

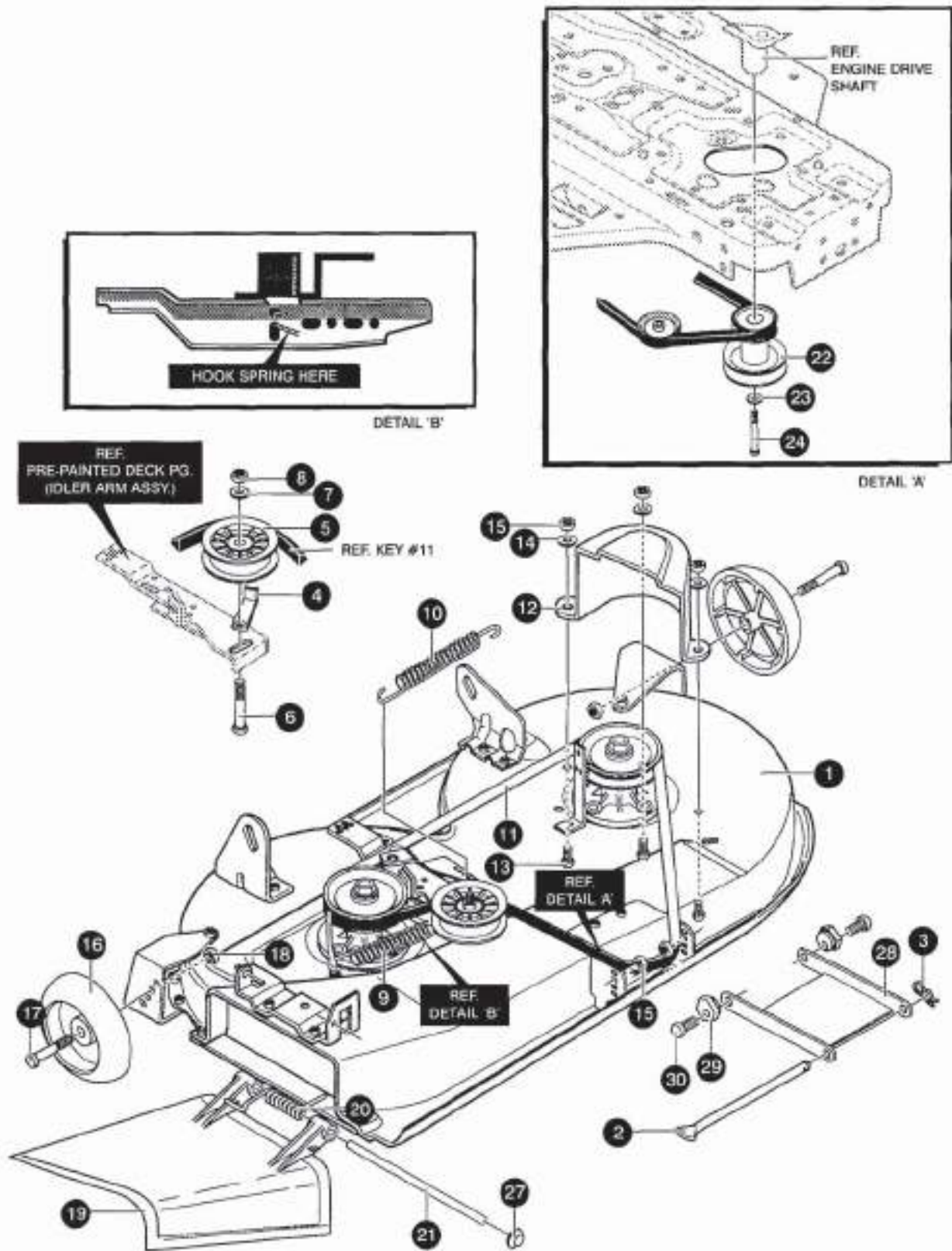
ASSEMBLE PIVOT ROD BEFORE
ASSEMBLING IDLER ARM



DETAIL W



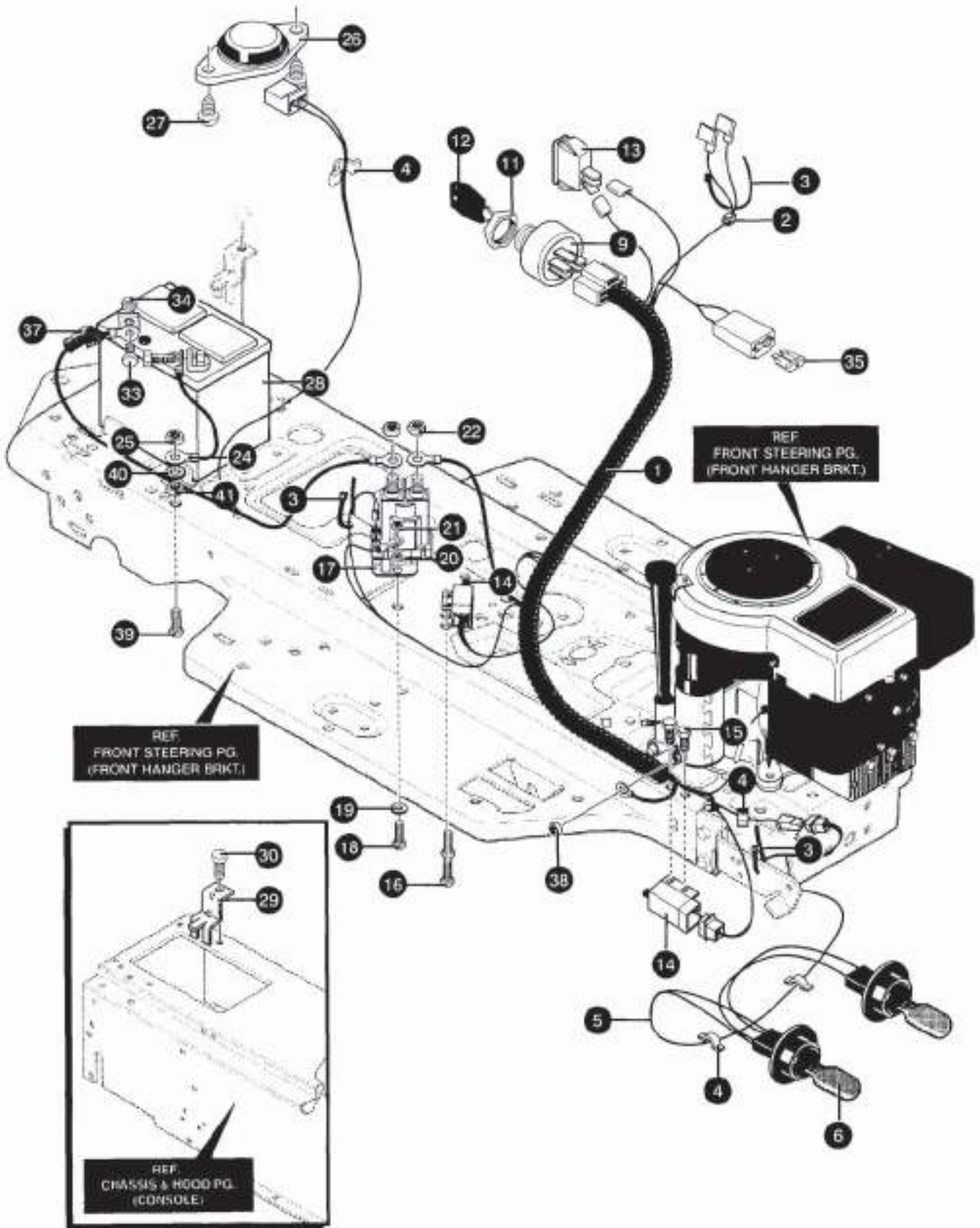
KEY#	PART NUMBER	QTY	DESCRIPTION
1	6121 032 1982	1	DECK 30"
2	9027 068 5211	1	BOLT, 3/8-16 X 2.00
3	6121 993 9659	2	RETAINER, BELT
4	6121 708 9310	1	WASHER, FLAT .515 X 1.38 X .119
5	6121 004 5074	1	PULLEY, IDLER
6	6121 002 5210	1	WASHER, FLAT .386 X 1.25 X .09
8	9214 320 1703	1	NUT, 3/8-16
9	6121 012 0382	1	WASHER, .393 X .68 X .10
10	6121 032 1147	1	DECK BELT MT422
11	6121 004 7817	1	PIN, CLEVIS LONG
12	6121 995 6180	1	PIN, HAIR .53DAI X 1.62LG
13	6121 031 5314	1	CHUTE DEFLECTOR 30" DECK
14	6120 704 3900	1	SPRING, TORSION CHUTE DEFLECTOR
15	6121 703 0910	1	ROD, PIVOT DECK .312D X 7.25
16	6121 034 1236	1	KIT ENGINE PULLEY
20	9321 630 0201	1	WASHER, .459 X .78 X .12
21	6121 018 2764	1	SCREW, 7/16-20 X 3.25
24	6121 033 8333	1	SPRING, .75 X 12.12 X .105
25	6121 031 1236	1	BRACKET, BAR, TOW, FRONT
26	9008 319 9040	2	SCREW, 5/16-18 x 1.00
27	6121 995 8247	2	NUT, ADJUST
28	9214 320 1701	2	NUT, 5/16-18
29	6120 708 7410	1	NUT, PUSH ON CAP .312 OD



KEY#	PART NUMBER	QTY	DESCRIPTION
1	*	1	ASSEMBLY DECK
2	6121 703 0910	1	ROD, DECK HITCH
3	9340 003 0303	1	PIN, HAIR
4	6121 704 1310	1	RETAINER, BELT
5	6121 760 1200	1	PULLEY, IDLER
6	9027 068 5211	1	BOLT, 3/8-16 X 2.00
7	6121 012 0382	1	WASHER, .393 X .68 X .10
8	9210 260 0782	1	NUT, 3/8-16
9	6121 032 2064	1	SPRING
10	6121 032 6256	1	SPRING
11	6121 030 0680	1	DECK BELT MT410
12	6121 706 0810	1	GUARD, BELT LH
13	9008 319 9038	3	SCREW, 5/16-18 X .75
14	6121 012 0393	3	WASHER, FLAT .344 X .69 X .065
15	9214 320 1701	*	NUT, 5/16-18
16	6121 704 9700	2	GAUGE WHEEL
17	6121 704 1830	2	BOLT, .500 X 1.390
18	9214 320 1703	2	NUT, 3/18-16
19	6121 005 7818	1	CHUTE DEFLECTOR
20	6120 704 3900	1	SPRING
21	6121 033 4908	1	KIT FOR 57317 PIVOT ROD
22	6121 032 8034	1	PULLEY, ENGINE
23	9321 630 0201	1	WASHER, .459 X .78 X .12
24	9007 319 9226	1	SCREW, 7/16-20 X 4.25
27	6121 033 2179	1	CAP, PUSH ON
28	6121 031 4070	1	BRACKET, LINK DECK FRONT
29	6121 995 8247	2	NUT, ADJUST
30	9008 319 9040	2	SCREW, 5/16-18 X 1.00

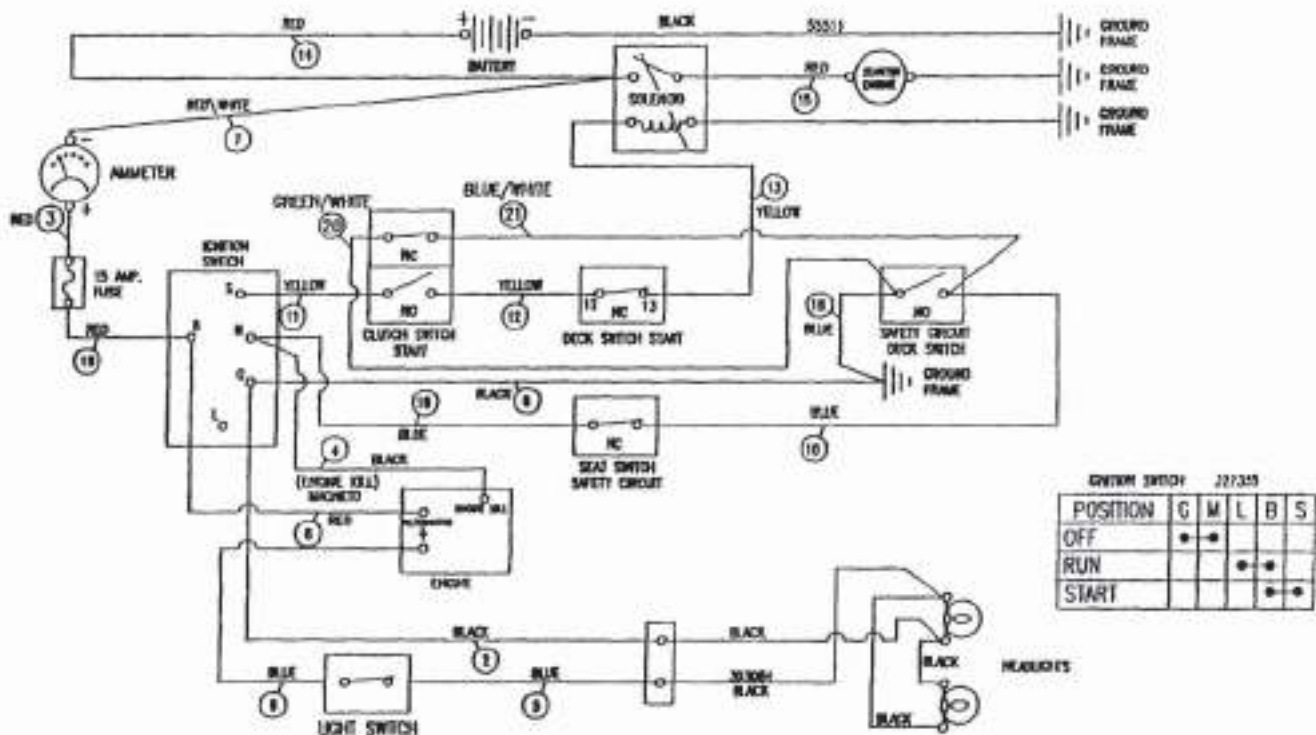
* AS REQUIRED

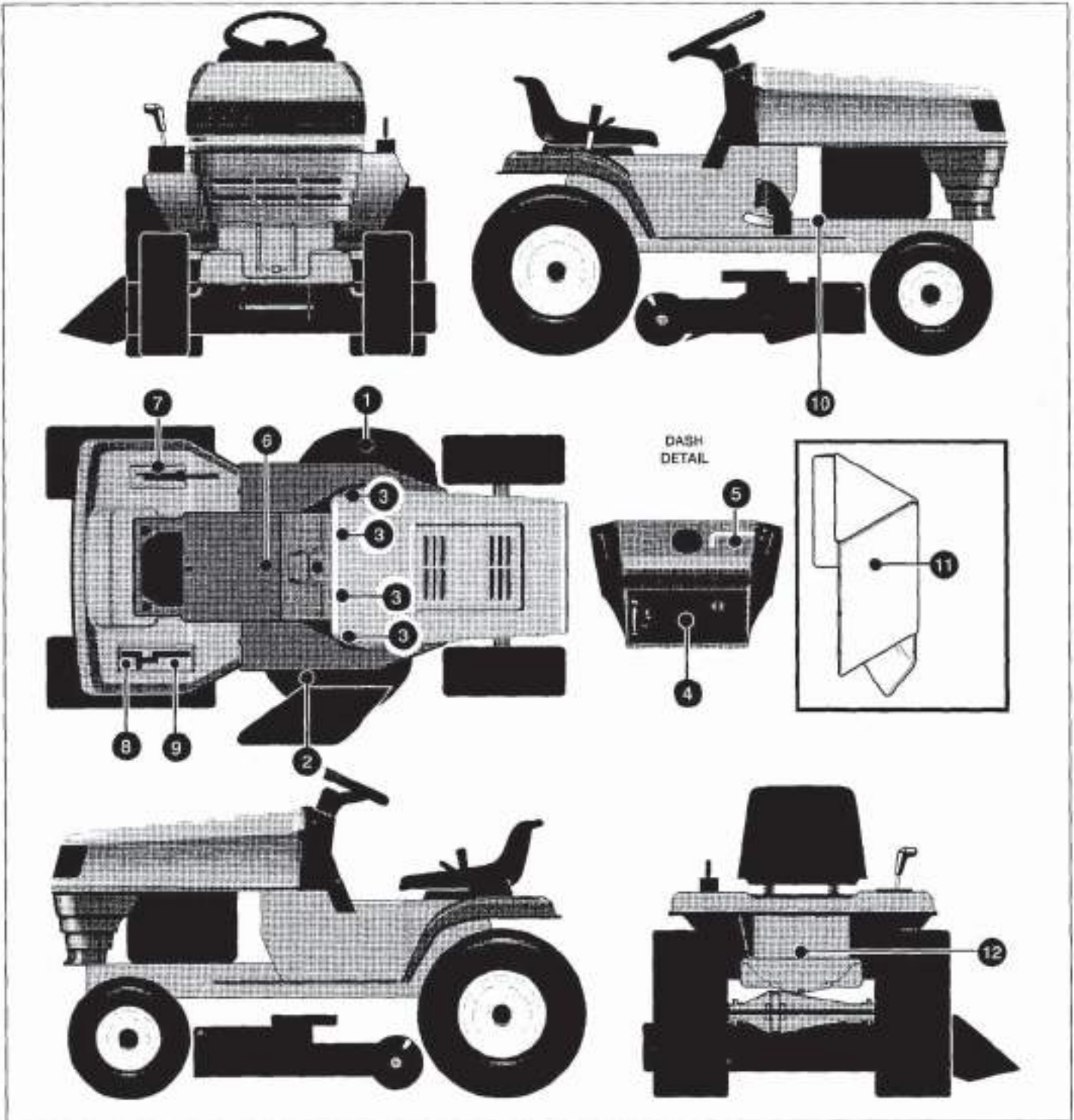
* REFERENCE ONLY



KEY#	PART NUMBER	QTY	DESCRIPTION
1	6121 033 1450	1	WIRE HARNESS
2	6121 009 4779	1	MALE TERMINAL, DOUBLE END 1/4"
3	0000 988 9200	*	TIE, CABLE BLACK
4	6121 448 1200	*	PRESS CLIP, 1 1.380LG .255ID
5	6121 440 2000	1	ASSY, LIGHT WIRE-1/4 TURN
6	6120 405 3000	2	BULB, HEADLAMP
9	6121 430 2400	1	SWITCH-IGN. 3 POSN
11	6120 432 2200	1	NUT, 5/8-8
12	6120 435 0500	1	KEY, IGNITION
13	6121 030 0334	1	LIGHT SWITCH ON/OFF PANEL MNT
14	6120 430 0210	2	SWITCH, SCR MNT
15	6121 030 0302	2	SCREW, #10 X .50
16	9103 021 7050	2	SCREW, #12 X .50
17	6121 078 2966	1	SOLENOID
18	9008 319 9048	2	SCREW, 1/4-20 X .75
19	6121 000 1084	1	WASHER, FLAT .281 X 1.00 X .063
20	6121 000 1502	1	NUT, 1/4-20
21	9220 260 8115	1	NUT, 1/4-20
22	6121 027 1187	2	NUT, 5/16-24
24	6120 440 2200	1	WIRE, GROUND, 12.5"
25	9220 260 8121	1	NUT, 5/16-18
26	6121 430 0240	1	SWITCH, SEAT
27	9110 313 6025	2	SCREW, 1/4-20 X .38
28	6121 400 1100	1	NOT STOCKED
29	6121 032 9175	1	BATTERY BRACKET
30	9039 488 9010	1	SCREW, 1/4-20 X .50
33	9008 319 9046	2	SCREW, 1/4-20 X .75
34	9220 260 8115	2	NUT, 1/4-20
35	6121 030 2031	1	FUSE SPADE TYPE 32V 15A
37	6121 030 8201	1	INSULATOR, BATTERY BOOT
38	6121 012 4818	1	NUT, 1/4-20
39	9008 319 9040	1	SCREW, 5/16-18 X 1.00
40	6121 013 8485	1	WASHER, .320 X .61 X .03
41	9214 320 1701	2	NUT, 5/16-18

* AS REQUIRED



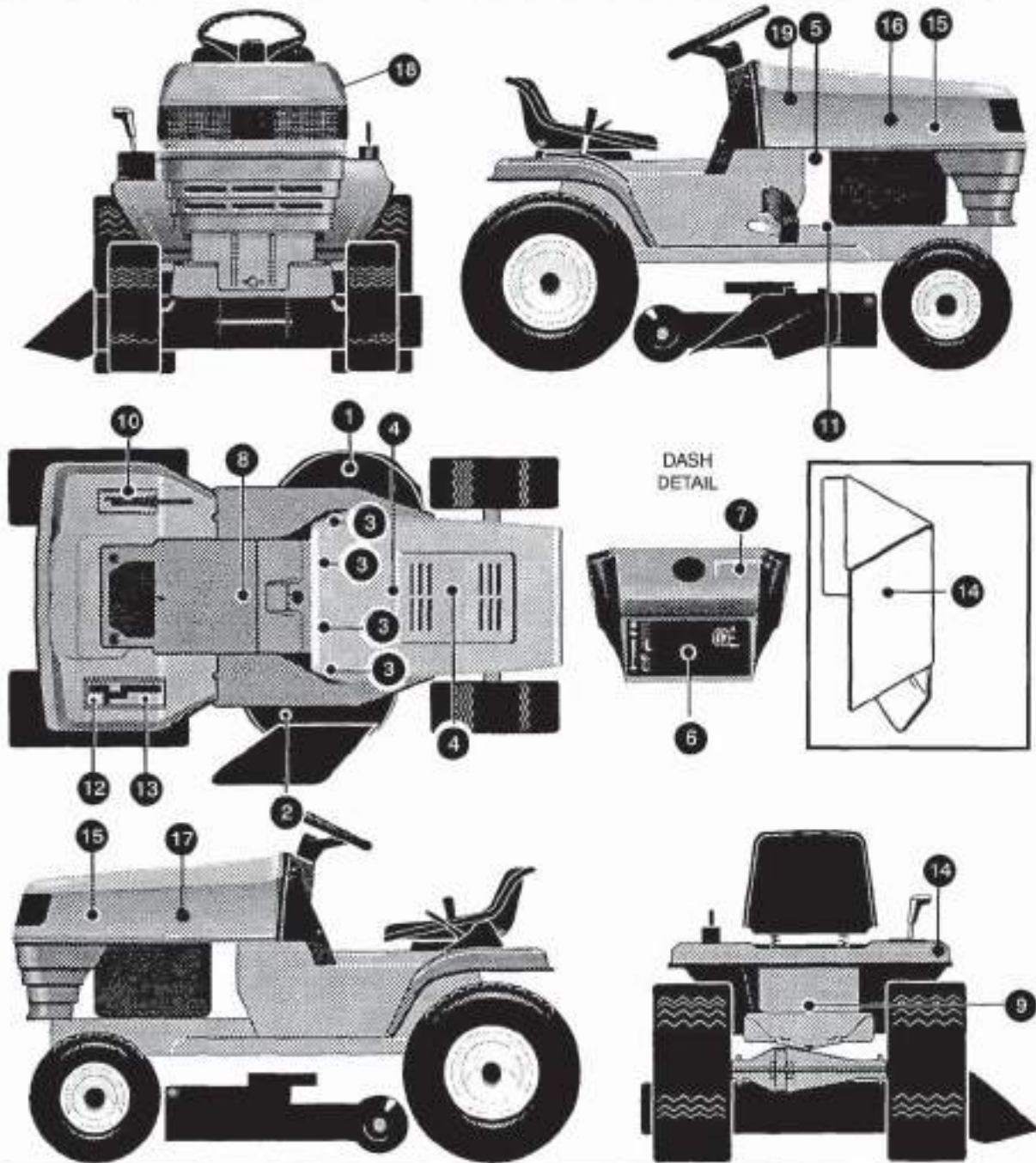


KEY#	PART NUMBER	QTY	DESCRIPTION
1	6121 040 2700	1	DECAL, CAUTION DECK LH
2	6121 040 2701	1	DECAL, CAUTION DECK RH
3	6121 031 8197	4	PAD, ADHESIVE 1.00 X 1.50 X .12
4	6121 032 0717	1	DECAL, DASH PLAIN EXP G.P. DUAL
5	6121 032 7610	1	DECAL, PTO ENGAGEMENT
6	6121 071 0724	1	DECAL, CONSOLE CAUTION "CE"
7	6121 040 2214	1	DECAL, HEIGHT ADJUST
8	6121 031 1394	1	DECAL, SHIFT REV/NEUTRAL
9	6121 033 1013	1	DECAL, SHIFTER POSITION 5SP/SOF
10	6121 040 2702	1	DECAL, BRAKE/CLUTCH PICTOGRAM
11	6121 033 8543	1	DECAL, HOT SURF WARN
12	6121 033 8542	1	DECAL, DRAWBAR WARN

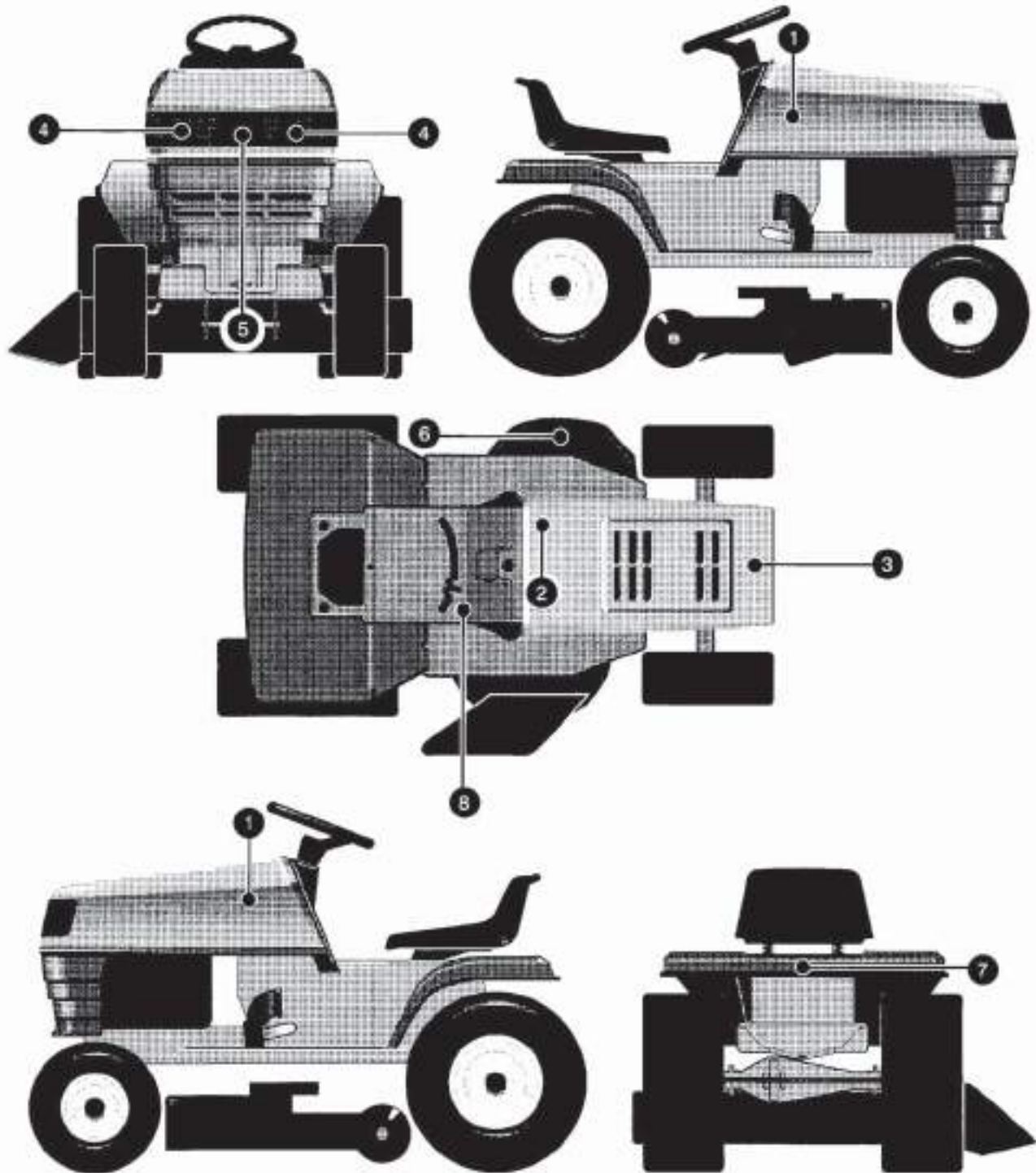
Illustration M

MT410

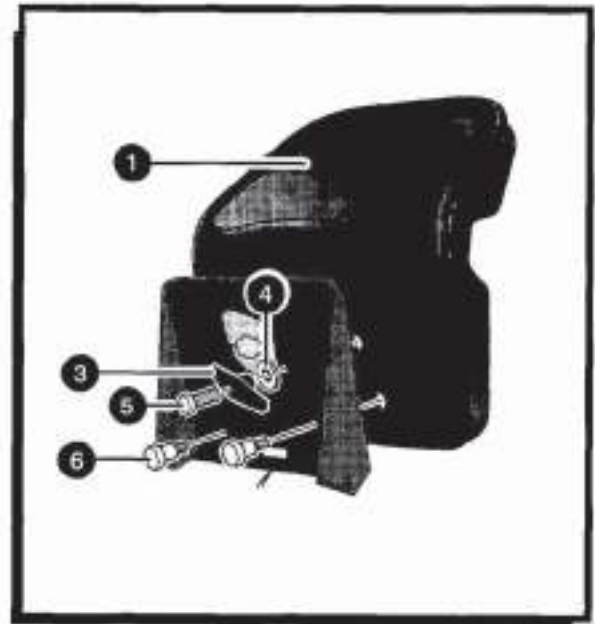
Decals Assembly



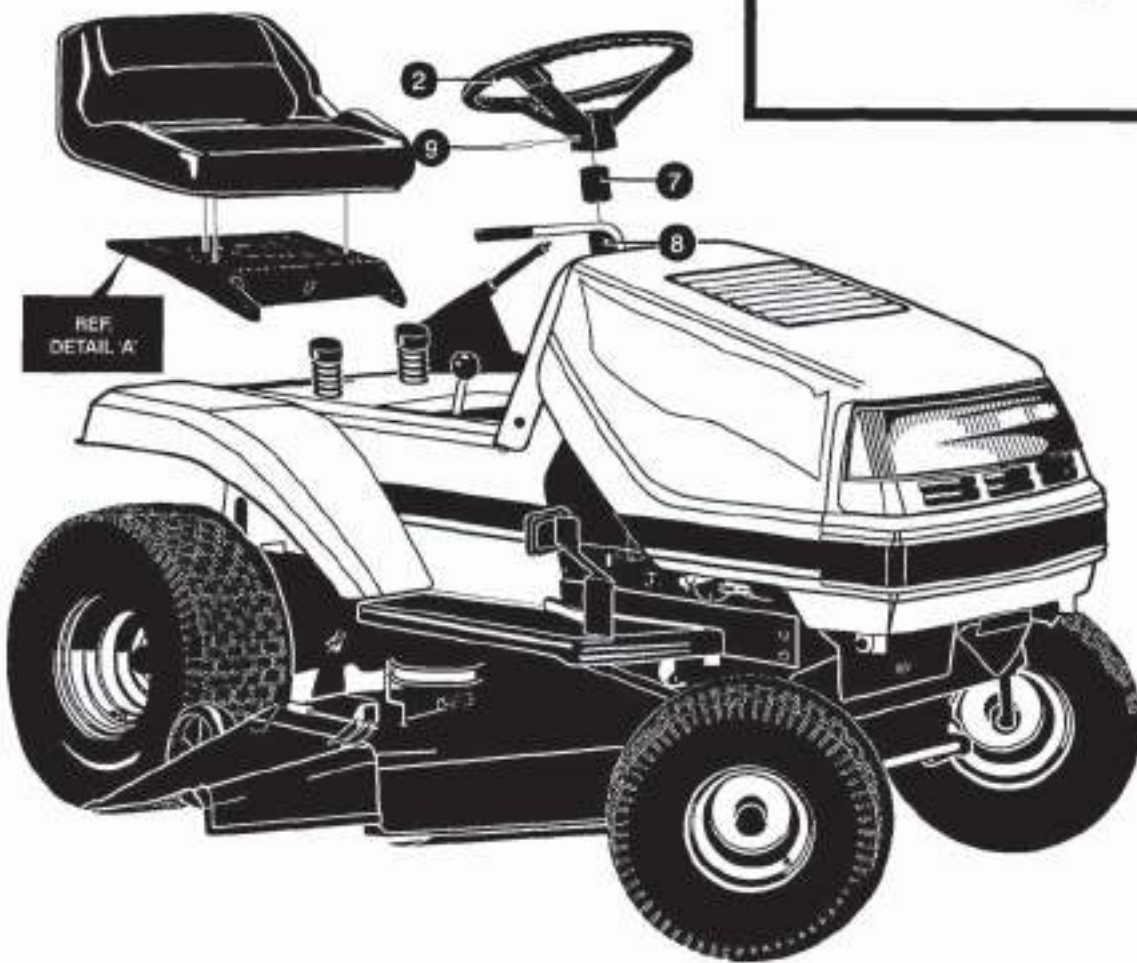
KEY#	PART NUMBER	QTY	DESCRIPTION
1	6121 040 2700	1	DECAL, CAUTION DECK, LH
2	6121 040 2701	1	DECAL, CAUTION DECK, RH, CUT HAND
3	6121 031 8197	4	PAD, ADHESIVE
4	6121 030 5602	2	FOAM, HOOD
5	6121 030 5603	2	PAD, 18 X 6 FOAM HOOD
6	6121 032 0717	1	DECAL, DASH PLAIN
7	6121 032 7610	1	DECAL, PTO ENGAGEMENT
8	6121 033 8540	1	DECAL, CONS CAUTION
9	6121 033 8542	1	DECAL, DRAWBAR WARNING
10	6121 040 2214	1	DECAL, HEIGHT ADJUST
11	6121 040 2702	1	DECAL, BRAKE/CLUTCH
12	6121 031 1394	1	DECAL, SHIFT REV/NEUTRAL
13	6121 033 1013	1	DECAL, SHIFTER POSITION
14	6121 033 8543	1	DECAL, HOT SURFACE WARNING
15	6121 034 0805	2	DECAL, VIKING (HOOD SIDE) GREEN
16	6121 040 2894	1	DECAL, HOOD STRIPE, RH
17	6121 040 2895	1	DECAL, HOOD STRIPE, LH
18	6121 030 4979	2	FOIL, REFLECTOR LENS-BULB
19	6121 040 2577	2	DECAL, CONSOLE SSP
20	6121 040 2893	2	DECAL, HOOD MT410



KEY#	PART NUMBER	QTY	DESCRIPTION
1	6121 071 1496	2	DECAL, 5-SPD/12HP RH/LH HOOD
2	6121 071 1503	1	DECAL, MT422 HOOD
3	6121 071 1507	1	DECAL, HOOD VIKING OVAL GREEN
4	6121 030 4979	2	FOIL, REFLECTOR LENS-BULB
5	6121 030 7732	1	DECAL, LENS CENTRE SMOKED
6	6121 071 1500	1	DECAL, DECK 30" CUT
7	6121 071 1508	1	DECAL, REAR VIKING WHITE/CLEAR
8		1	NON SERVICEABLE PART

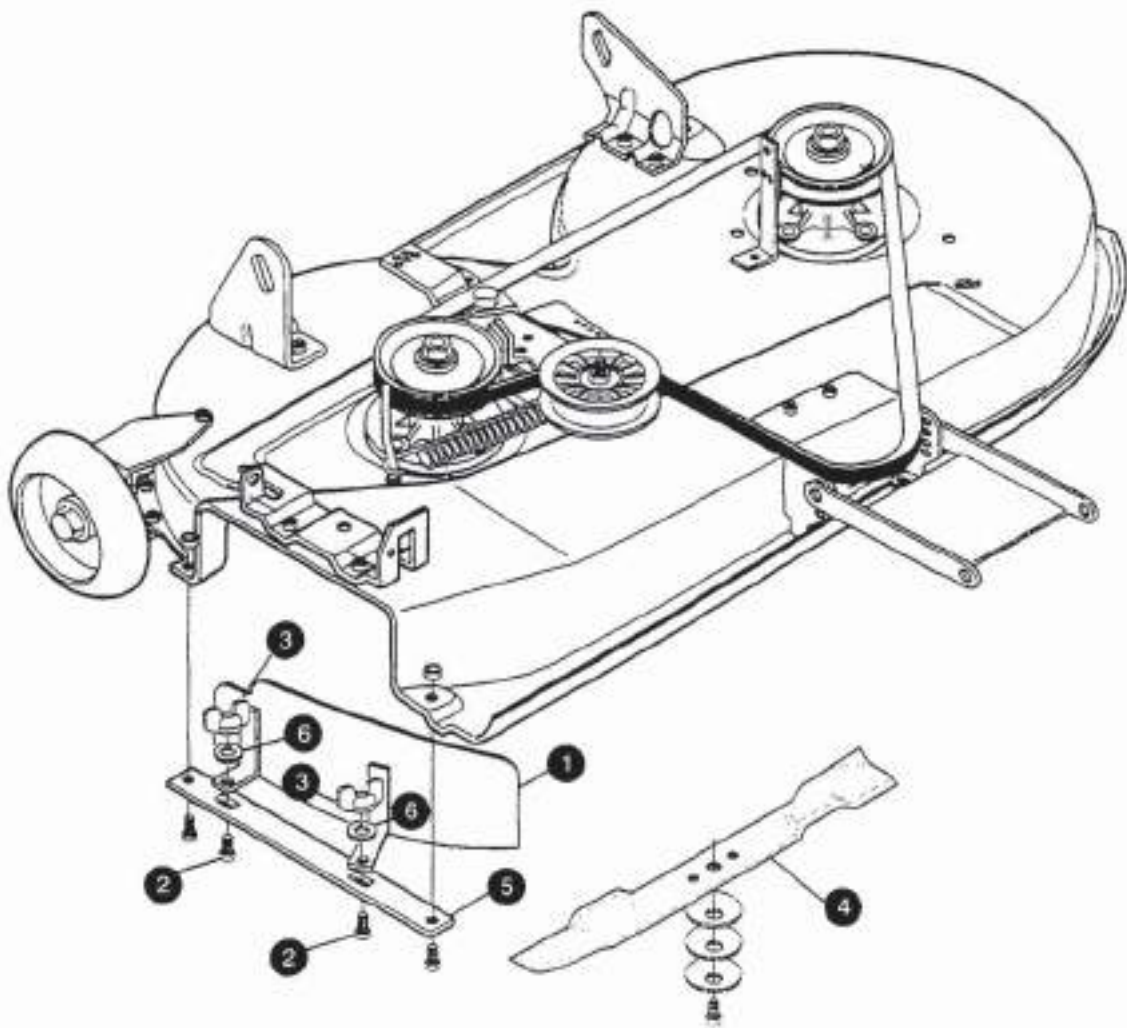


DETAIL W

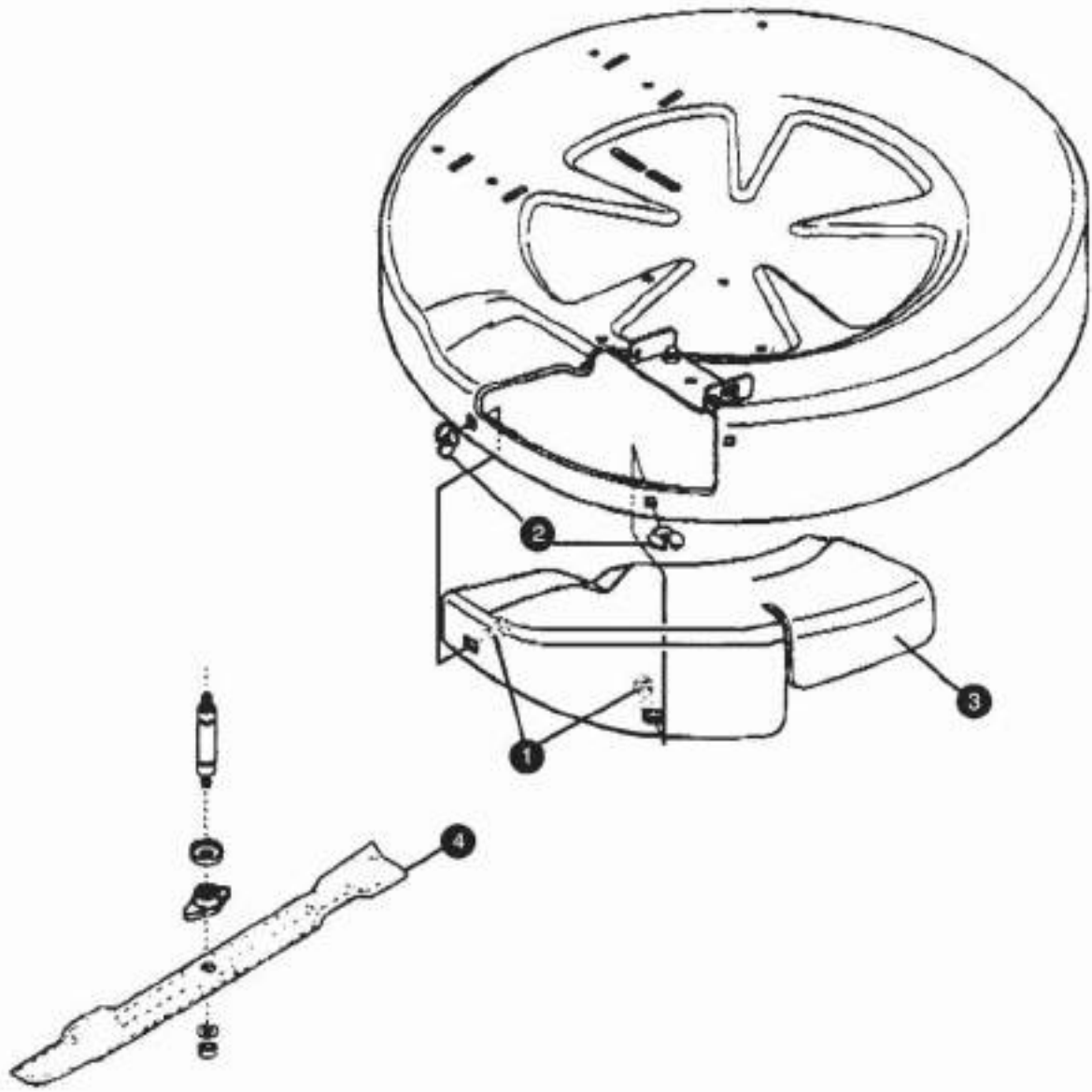


REF.
DETAIL A

KEY#	PART NUMBER	QTY	DESCRIPTION
1	6121 033 1524	1	SEAT
2	6121 033 0510	1	STEERING WHEEL
3	6121 064 3958	1	HANDLE, WING NUT
4	6121 012 0393	1	WASHER, FLAT .334 X .69 X .065
5	9008 319 9040	1	SCREW, 5/16-18 X 1.00
6	6121 033 1637	2	BOLT, SHOULDER SHAFT
7	6121 033 1322	1	COVER, STEERING SHAFT
8	6121 703 2100	1	SPACER, STEERING SHAFT
9	9380 620 9730	1	PIN, SPRING .250DIA X 2.00LG



KEY#	PART NUMBER	QTY	DESCRIPTION
1	6121 032 6279	1	MULCHING PLUG
2	6121 012 6216	2	BOLT, 5/16-18 X .75
3	6121 032 7457	2	NUT, 5/16-18 WING
4	6121 032 6160	1	BLADE, 38" MULCHING
5	6121 032 6295	1	BAR, SKID
6	6121 013 8485	2	WASHER, 320 X .61 X .03



KEY#	PART NUMBER	QTY	DESCRIPTION
1	6121 912 6358	2	CARRIAGE BOLT, 5/16-18 X 1.00
2	6121 032 7457	2	NUT, 5/16-18 WING
3	6121 032 7220	1	MULCHING PLATE
4	6121 032 7224	1	MULCHING BLADE

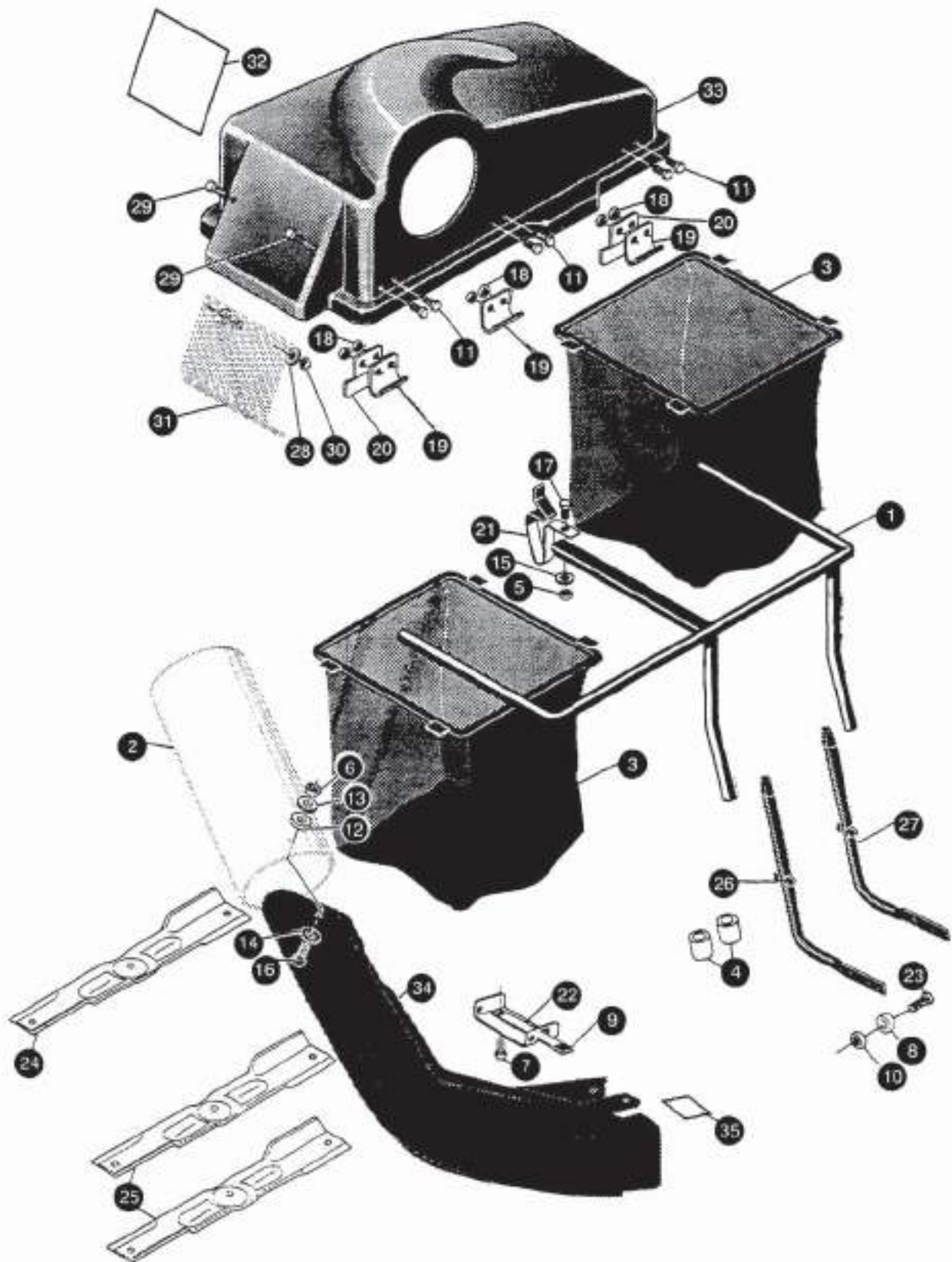


Illustration Q

MT410,MT422

Grass Catcher Assy

KEY#	PART NUMBER	QTY	DESCRIPTION
1	6121 005 8282	1	SUPPORT ASSY
2	6121 005 7667	1	TUBE, UPPER 23 X 6.75 MT410
2	6121 032 3119	1	UPPER TUBE CLEAR MT422
3	6121 005 8283	2	BAG, GRASS COLLECTOR
4	6121 030 2131	1	SPACER
5	9214 320 1701	1	NUT, 5/16-18
6	6121 000 1502	2	NUT, 1/4-20
7	9039 488 9016	1	SCREW, 5/16-18 X .50
8	6121 004 1462	4	SPACER, SLEV .328 X .75 X .312
9	6120 703 6610	1	GRIP-LEVER GRASS COLLECTOR
10	9220 260 8210	4	NUT, 5/16-18
11	9008 319 9060	6	SCREW, 1/4-20 X .63
12	6121 005 7506	2	GROMMET
13	0000 958 0615	2	WASHER, FLAT .281 X 1.25 X .06
14	6121 012 0386	2	WASHER, FLAT .312 X .73 X .065
15	6121 012 0393	1	WASHER, FLAT .344 X .69 X .065
16	9008 319 9046	2	SCREW, 1/4-20 X .75
17	9008 319 9038	1	SCREW, 5/16-18 X .63
18	9220 260 8115	6	NUT, 1/4-20
19	6121 030 0278	3	HINGE, COVER
20	6121 030 0624	2	STRAP, RETAINER
21	6121 030 7981	1	BAGGER LATCH
22	6121 932 2320	1	LEVER ASSY (SHORT)
23	6121 918 0083	4	SCREW, 5/16-18 X 1.50
24	6121 032 3114	1	BLADE, HIGH LIFT MT422
25	6121 030 6932	2	BLADE, HIGH LIFT MT410
26	6121 032 7637	1	ROD-GRASS COLLECTOR "A"
27	6121 032 7638	1	ROD-GRASS COLLECTOR "B"
28	6121 000 1501	2	WASHER, FLAT .203 X .56 X .040
29	6121 005 7034	2	SCREW, 10-24 X .63
30	9220 260 8110	2	NUT, #10-24
31	6121 030 0155	1	SCREEN, GRASS CATCHER
32	6121 030 6490	1	DECAL, COVER TRI-LINGUAL MT410
33	6121 030 6943	1	COVER, GRASS COLLECTOR
34	6121 031 4842	1	CHUTE, TRANSITION DECK 38"
34	6121 032 3120	1	CHUTE, DECK 30"
35	6121 030 6489	1	DECAL, DANGER CHUTE TRI-LINGUAL
36	6121 032 7717	1	OPERATOR'S MANUAL (NOT SHOWN) MT410
	6121 033 8939	1	OPERATOR'S MANUAL (NOT SHOWN) MT422

0451 422 1323

