



GARDEN TRACTOR

MT 444T - 38" 385021x53A

MT 444H - 40" 405604x53A

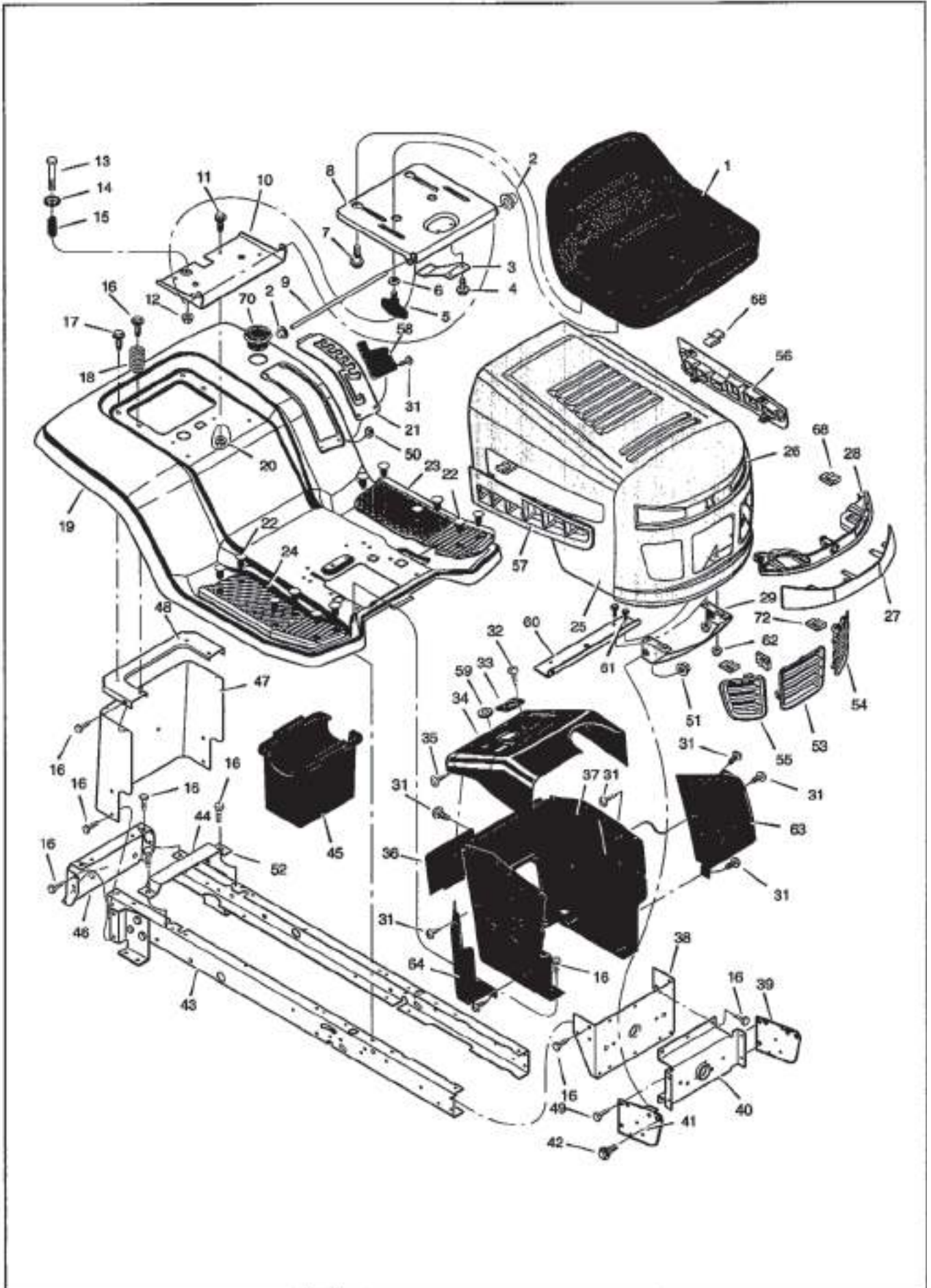
MT 446H - 42" 425621x53A

**2004 - 2005 WM1Bonnet MT 444
WM2Bonnet MT 446**

Silent Trac Transmissions

CHASSIS & HOOD

MT 446H - MT 444H - MT 444T



CHASSIS & HOOD

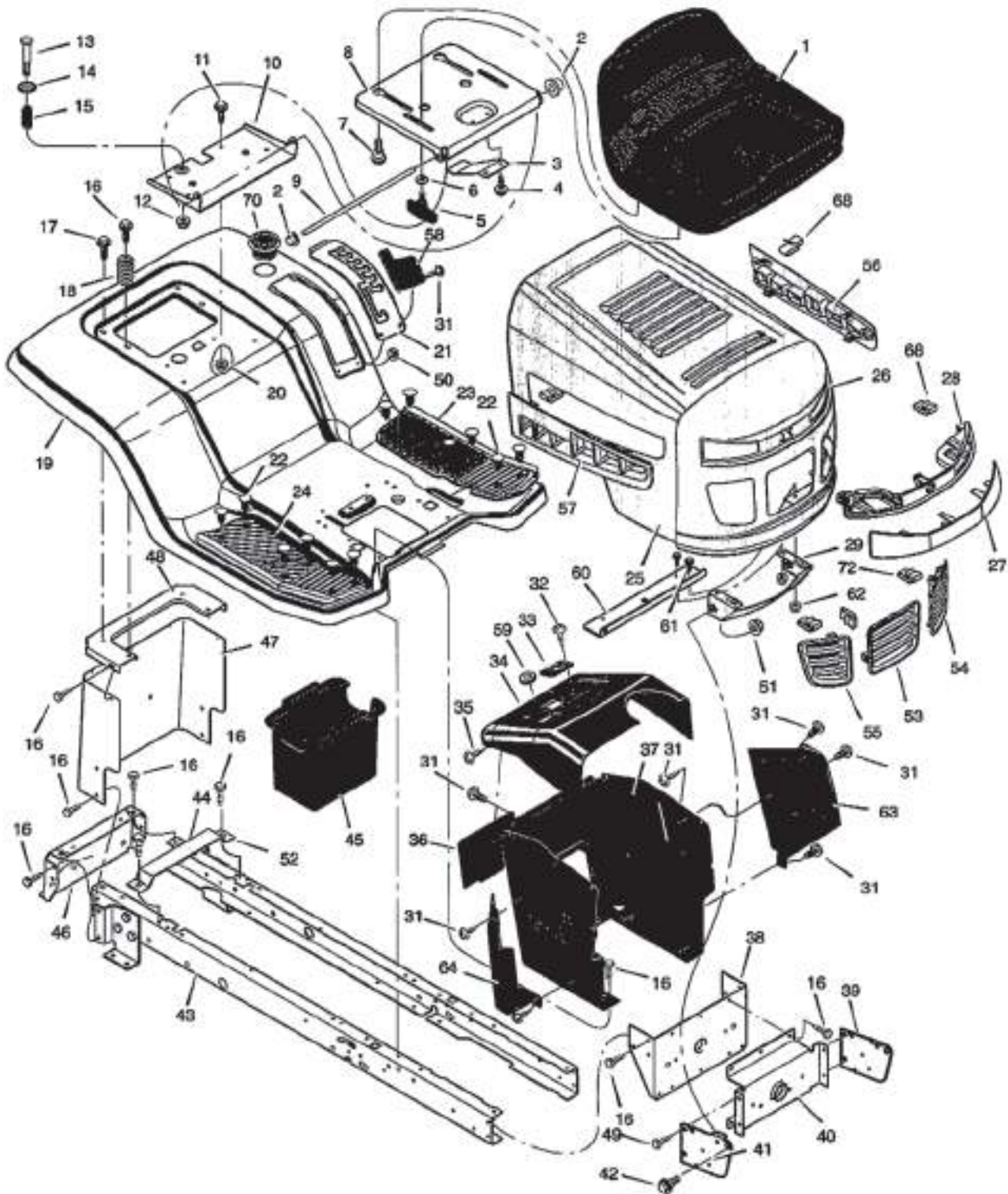
MT 446H - MT 444H - MT 444T



KEY#	PART NUMBER	DESCRIPTION	TO SUIT MODEL
1	7004 872 0846	Seat	
2	7004 872 1222	Cap Push On	
3	7004 872 0662	Spring	
4	7004 872 1200	Screw	
5	7004 872 1246	Bolt Wing	
6	7004 872 1226	Washer	
7	7004 872 0404	Bolt Shoulder	
8	7004 872 0687	Support Seat	
9	7004 872 0816	Rod Pivot	
10	7004 872 0686	Bracket Pivot	
11	7004 872 1208	Bolt	
12	7004 872 1224	Nut	
13	7004 872 1209	Bolt Shoulder	
14	7004 872 0815	Washer	
15	7004 872 1142	Spring	
16	7004 872 1208	Screw	
17	7004 872 1167	Screw	
18	7004 872 1133	Spring	
19	7004 872 1612	Deck Seat - 38"	MT 444T
	7004 872 1613	Deck Seat - 40"	MT 444H
	7004 872 1614	Deck Seat - 42"	MT 446H
20	7004 872 1224	Nut	
21	7004 872 1615	Plate Index	MT 444T-MT 444H
	7004 872 0774	Plate Index	MT 446H
22	7004 872 0420	Plug Panel	
23	7004 872 0844	Mat Left	
24	7004 872 0845	Mat Right	
25	7004 872 1616	Hood	MT 444T-MT 444H
	7004 872 1617	Hood	MT 446H
26	7004 872 1618	Grille	MT 444T-MT 444H
	7004 872 1619	Grille	MT 446H
27	7004 872 1620	Lens	MT 444T-MT 444H
	7004 872 1621	Lens	MT 446H
28	7004 872 1622	Housing Light	MT 444T-MT 444H
	7004 872 1623	Housing Light	MT 446H
29	7004 872 1624	Bracket Lower Pivot	MT 444-MT 446
31	7004 872 1145	Screw	
32	7004 872 0464	Screw	
33	7004 872 1640	Bearing Steering	
34	7004 872 1650	Dash	MT 444T-MT 444H
	7004 872 1653	Dash	MT 446H
35	7004 872 0460	Screw	
36	7004 872 0638	Panel access	
37	7004 872 1659	Support Dash	MT 444T-MT 444H
38	7004 872 1665	Bracket rear Hanger	
39	7004 872 1669	Support Left Grille	MT 444T-MT 444H
	7004 872 1671	Support Left Grille	MT 446H
40	7004 872 0650	Axle Hanger	
41	7004 872 1674	Support Right Grille	MT 444T-MT 444H
	7004 872 1676	Support Right Grille	MT 446H
42	7004 872 1677	Bolt Shoulder	
43	7004 872 1769	Frame Right	
44	7004 872 1681	Frame Left	
45	7004 872 1104	Container Battery	

CHASSIS & HOOD

MT 446H - MT 444H - MT 444T



CHASSIS & HOOD

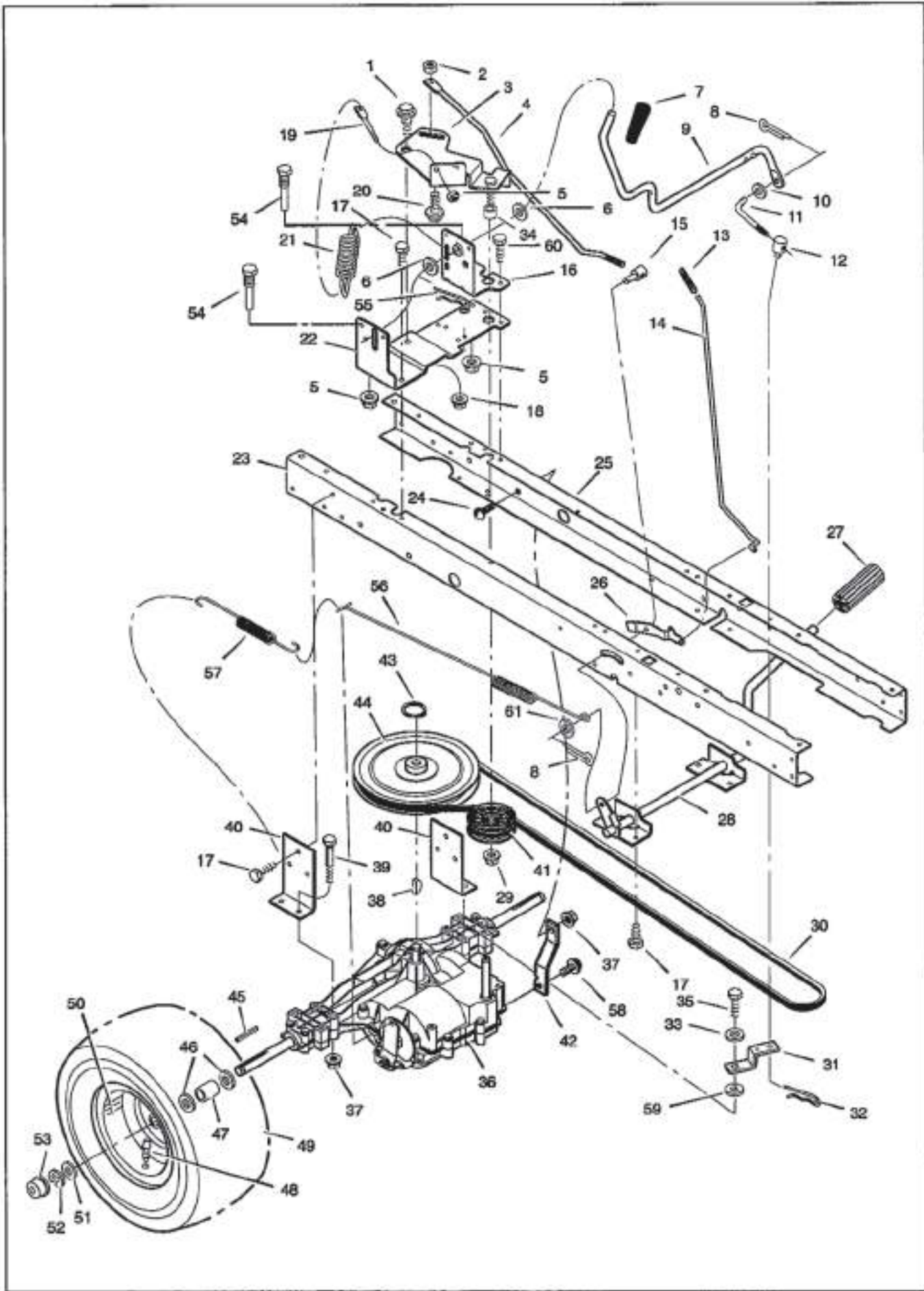
MT 446H - MT 444H - MT 444T



KEY#	PART NUMBER	DESCRIPTION	TO SUIT MODEL
46	7004 872 1310	Plate Hitch	
47	7004 872 1105	Plate Rear	MT 444T-MT 444H
	7004 872 1684	Plate Rear	MT 446H
48	7004 872 1686	Top Rear Plate	MT 444T-MT 444H
	7004 872 1689	Top Rear Plate	MT 446H
49	7004 872 1297	Screw	
50	7004 872 1690	Nut	
51	7004 872 1691	Nut	
52	7004 872 1111	Support Battery	
53	7004 872 1695	Insert Center Grille	MT 444T-MT 444H
	7004 872 1696	Insert Center Grille	MT 446H
54	7004 872 1698	Insert Left Grille	MT 444T-MT 444H
	7004 872 1699	Insert Left Grille	MT 446H
55	7004 872 1703	Insert Right Grille	MT 444T-MT 444H
	7004 872 1704	Insert Right Grille	MT 446H
56	7004 872 1707	Insert Left Hood	MT 444T-MT 444H
	7004 872 1708	Insert Left Hood	MT 446H
57	7004 872 1709	Insert Right Hood	MT 444T-MT 444H
	7004 872 1710	Insert Right Hood	MT 446H
58	7004 872 1714	Cover Detent	
59	7004 872 1717	Grommet Parking Brake	
60	7004 872 1720	Bracket Support	MT 444T-MT 444H
	7004 872 1723	Bracket Support	MT 446H
61	7004 872 0399	Screw	MT 444T-MT 444H
	7004 872 1167	Screw	MT 446H
62	7004 872 1726	Nut	
63	7004 872 1728	Panel Left Side	
64	7004 872 1729	Panel Right Side	
65	7004 872 1731	Parts Bag Assy	MT 444T
	7004 872 1732	Parts Bag Assy	MT 444H
	7004 872 1733	Parts Bag Assy	MT 446H
66	7004 872 1740	Instruction Book/Parts	MT 444T
	7004 872 1741	Instruction Book/Parts	MT 444H
	7004 872 1742	Instruction Book/Parts	MT 446H
67	7004 872 1746	Holder Cup	
68	7004 872 1748	Retainer S-Clip	
70	7004 872 0460	Screw	

MOTION DRIVE SHIFT

MT 444T - 38"



MOTION DRIVE SHIFT

MT 444T - 38*

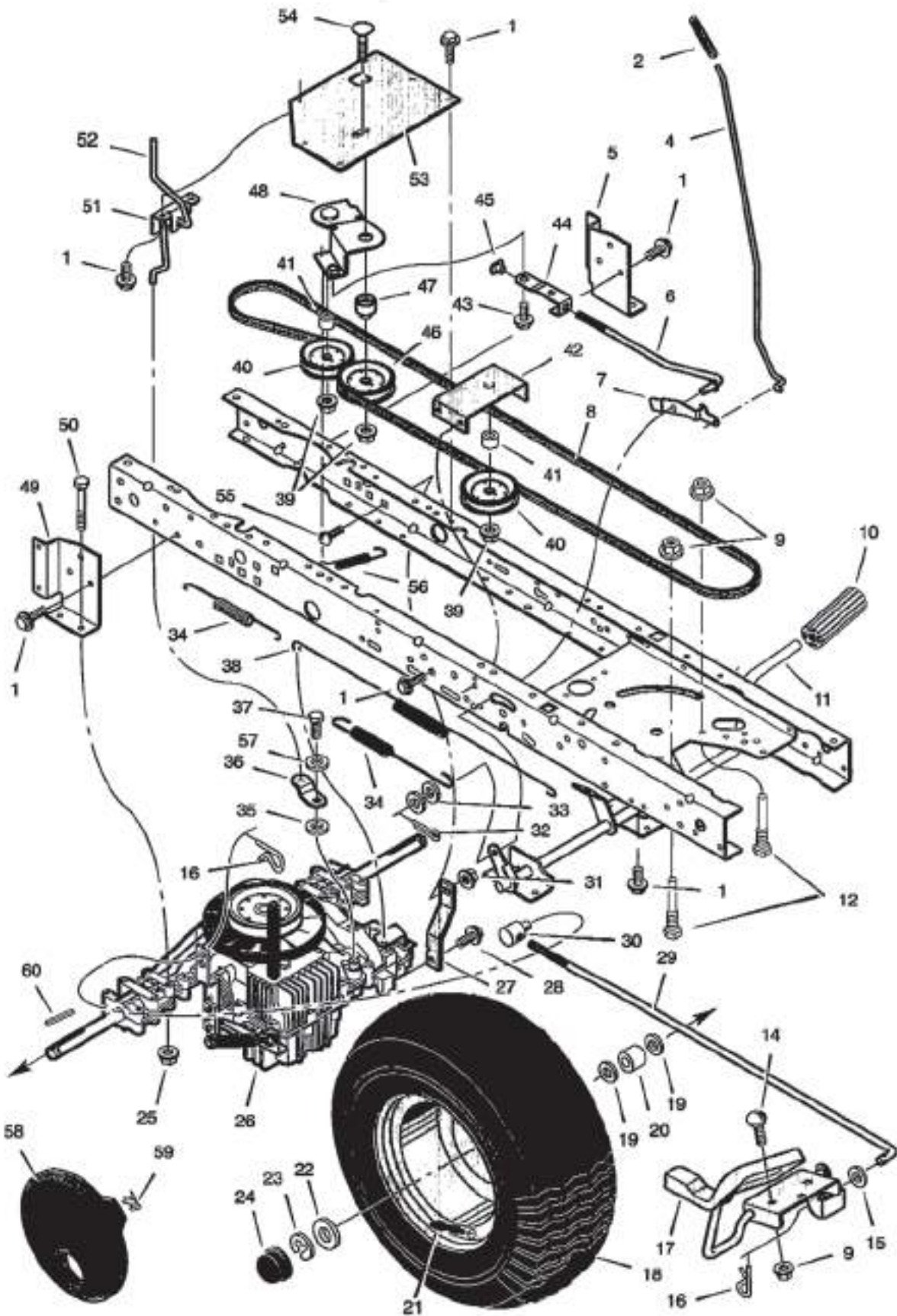


KEY#	PART NUMBER	DESCRIPTION	TO SUIT MODEL
1	7004 872 1211	Bolt Shoulder	
2	7004 872 0472	Nut Hex	
3	7004 872 1089	Arm Idler	
4	7004 872 0811	Rod Clutch	
5	7004 872 1123	Nut	
6	7004 872 1213	Washer	
7	7004 872 0734	Grip	
8	7004 872 1212	Pin Cotter	
9	7004 872 0655	Lever Shift	
10	7004 872 1226	Washer	
11	7004 872 0813	Link Shift	
12	7004 872 0450	Nut Adjuster	
13	7004 872 0522	Grip	
14	7004 872 1757	Rod Parking Brake	
15	7004 872 1204	Nut Adjuster	
16	7004 872 1759	Bracket Shift Pivot	
17	7004 872 1208	Screw	
18	7004 872 1219	Nut	
19	7004 872 0812	Mount Stud Spring	
20	7004 872 1761	Bolt Shoulder	
21	7004 872 1764	Spring Extension	
22	7004 872 1766	Bracket Flight Shifter	
23	7004 872 1769	Frame Right	
24	7004 872 0517	Bolt Carriage	
25	7004 872 1771	Frame Left	
26	7004 872 0814	Latch Parking Brake	
27	7004 872 0448	Pedal	
28	7004 872 1774	Lever Brake/Cutch	
29	7004 872 0470	Nut	
30	7004 872 1176	Belt Motion Drive	
31	7004 872 0810	Yoke Shift	
32	9340 003 0303	Pin Hair	
33	7004 872 0416	Washer	
34	7004 872 1098	Spacer	
35	7004 872 0426	Bolt	
36	HMST-205-527D	Transaxle Peerless *	MT 444T - 38*
37	7004 872 1224	Nut	
38	7004 872 0446	Key Woodruff	
39	7004 872 1775	Bolt	
40	7004 872 0651	Bracket Transaxle	
41	7004 872 1102	Pulley	
42	7004 872 1776	Bracket Transaxle Support	
43	7004 872 1175	E-Fling	
44	7004 872 0787	Pulley Drive	
45	7004 872 0449	Key Square	
46	7004 872 1227	Washer	
47	7004 871 1801	Spacer Transaxle	
48	7004 872 0453	Stem Valve	
50	7004 872 1015	Wheel & Tire Assembly	
51	7004 872 0445	Washer	
52	9460 624 5015	E-Fling	
53	7004 872 0741	Hub Cap	
54	7004 872 0648	Guide Belt	
55	7004 872 1237	Pin Hair	
56	7004 872 1780	Spring Extension	
57	7004 872 0438	Spring Extension	
58	7004 872 0462	Screw	
59	7004 872 1781	Washer	
60	7004 872 1146	Screw	
61	7004 872 1783	Washer	

* PLEASE REFER TO THE MANUFACTURE FOR WARRANTY AND SERVICE

DRIVE ASSEMBLY HYDRO

MT 444H MT 446H



DRIVE ASSEMBLY HYDRO

MT 444H - 40" MT 446H - 42"

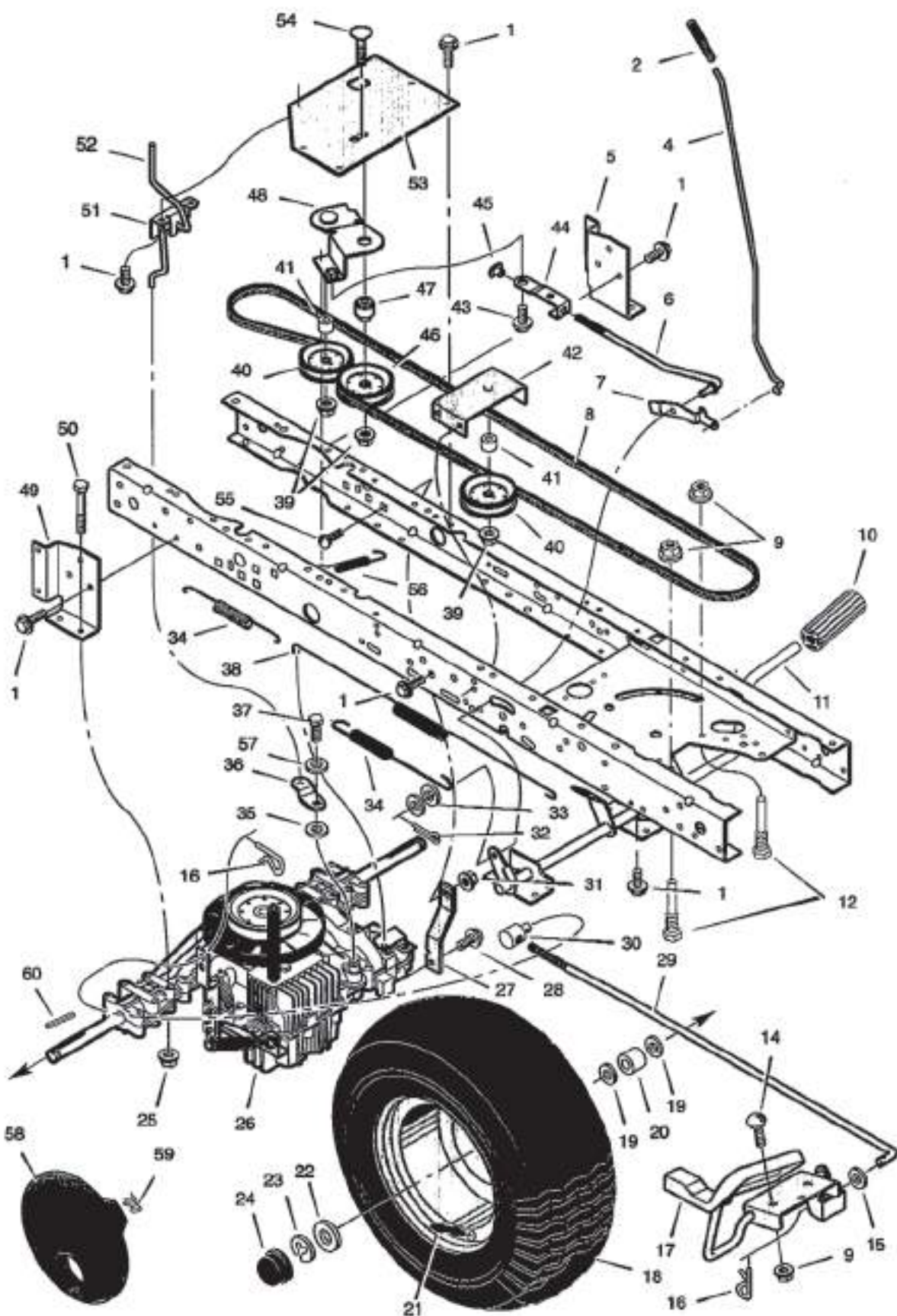


KEY#	PART NUMBER	DESCRIPTION	TO SUIT MODEL
1	7004 872 1208	Screw	
2	7004 872 0522	Grip Parking Brake	
4	7004 872 1757	Rod Parking Brake	
5	7004 872 0651	Bracket Left Transaxle	MT 444H
	7004 872 1788	Bracket Left Transaxle	MT 446H
6	7004 872 1789	Rod Clutch	
7	7004 872 0814	Latch Parking Brake	
8	7004 872 1325	V-Belt Drive	
9	7004 872 1123	Nut Flange	
10	7004 872 0448	Pedal Brake/Clutch	
11	7004 872 1791	Assy Brake Pedal	MT 444H
12	7004 872 1794	Belt Guide	
14	7004 872 0517	Bolt Carriage	
15	7004 872 1161	Washer	
16	7004 872 1237	Pin Hair	
17	7004 872 0789	Pedal Assy Hydro	MT 444H
	7004 872 1796	Pedal Assy Hydro	MT 446H
18	7004 872 1798	Wheel&Tire Assy	MT 444H
	7004 872 1799	Wheel&Tire Assy	MT 446H
19	7004 872 1227	Washer	
20	7004 872 1801	Spacer	
21	7004 872 0453	Stern Valve	
22	7004 872 0445	Washer	
23	9460 624 5015	E-Ring	
24	7004 872 0741	Cap Hub	
25	7004 872 1224	Nut Centrelock	
26	H2000-002B	Transaxle Peerless *	MT 444H - 40"
	H2000-002B	Transaxle Peerless *	MT 446H - 42"
27	7004 872 1804	Strap Torque	MT444H-MT 446H
28	7004 872 0462	Screw	
29	7004 872 1805	Rod Control	
30	7004 872 1002	Nut Adjusting	
31	7004 872 1219	Nut Centerlock	
32	7004 872 1212	Pin Cotter	
33	7004 872 0418	Washer	
34	7004 872 0438	Spring Extension	

* PLEASE REFER TO THE MANUFACTURE FOR WARRANTY AND SERVICE

DRIVE ASSEMBLY

MT 446H - 42" / MT 444H - 40"



DRIVE ASSEMBLY

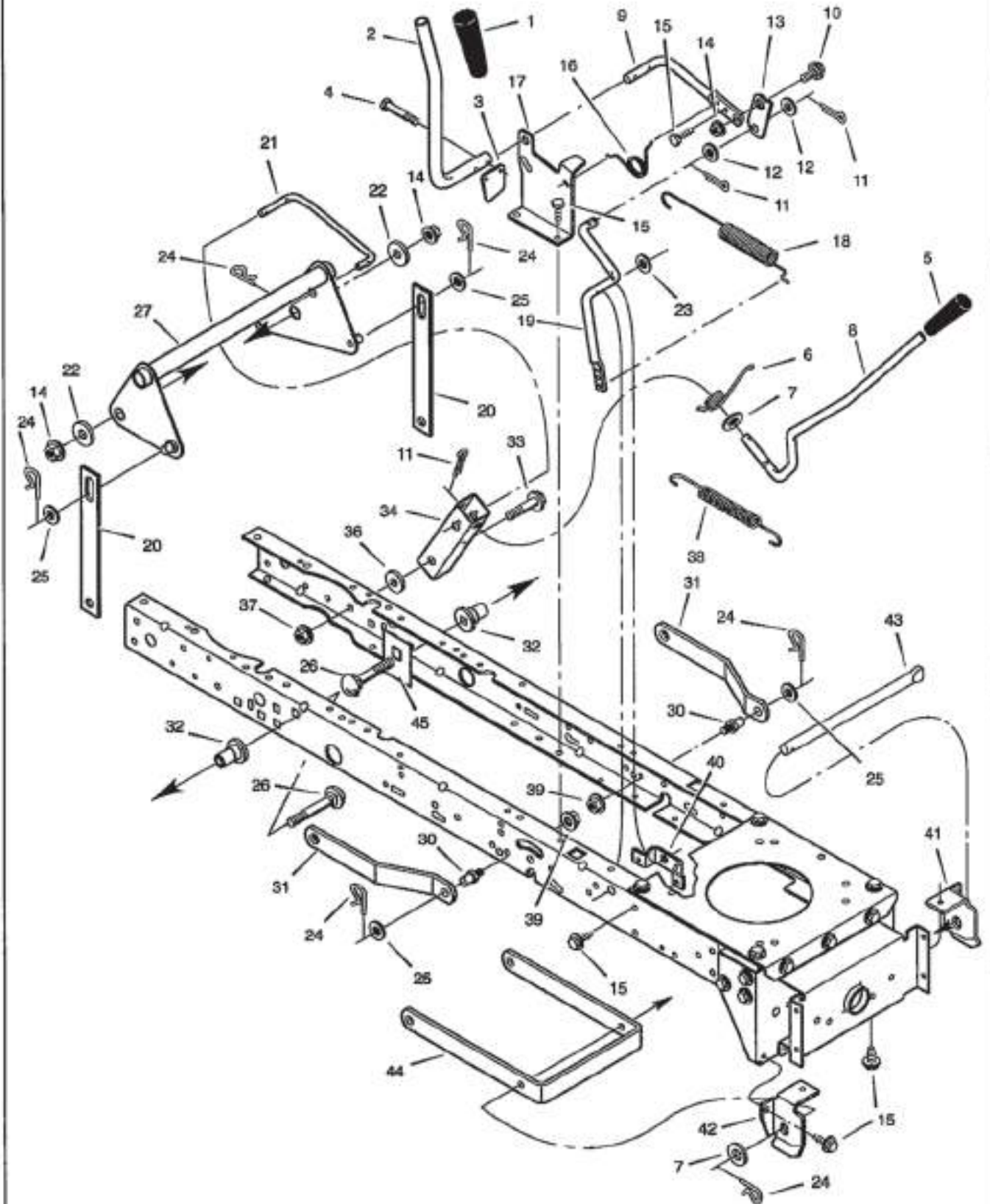
MT 446H - 42" / MT 444H - 40"



KEY#	PART NUMBER	DESCRIPTION	TO SUIT MODEL
35	7004 872 1808	Washer	
36	7004 872 1810	Arm Disconnect	
37	7004 872 0426	Capscrew	
38	7004 872 0858	Spring Brake	
39	7004 872 0470	Locknut Flange	
40	7004 872 1102	Pulley Idler	
41	7004 872 1098	Spacer	
42	7004 872 1311	Bracket Idler Assy	MT 444H-MT 446H
43	7004 872 1812	Bolt Shoulder	
44	7004 872 1813	Link Clutch	
45	7004 872 1815	Nut Tee	
46	7004 872 1103	Pulley Idler	
47	7004 872 1817	Bushing Pivot	
48	7004 872 1819	Arm Assy Idler	
49	7004 872 0651	Bracket Transaxle RH	MT 444H
	7004 872 1820	Bracket Transaxle RH	MT 446H
50	7004 872 1822	Bolt Hex	
51	7004 872 1823	Bracket Disconnect	
52	7004 872 1824	Rod Disconnect	
53	7004 872 1826	Bracket Idler Pivot	MT 444H-MT 446H
54	7004 872 1829	Bolt Carraige	
55	7004 872 1831	Bolt Carraige	
56	7004 872 1832	Spring Clutch	
57	7004 872 0416	Washer	
58	7004 872 1358	Cap Hub	
59	7004 872 1327	Retainer	
60	7004 872 0449	Key Square	
62	NOT STOCKED	Tyre Only	MT 444H
63	NOT STOCKED	Tyre Only	MT 446H
64	7004 872 1044	Tube Only	MT 446H

MOWER HOUSING SUSPENSION

MT 446H - 42" / MT 444H - 40" / MT444T - 36"



MOWER HOUSING SUSPENSION

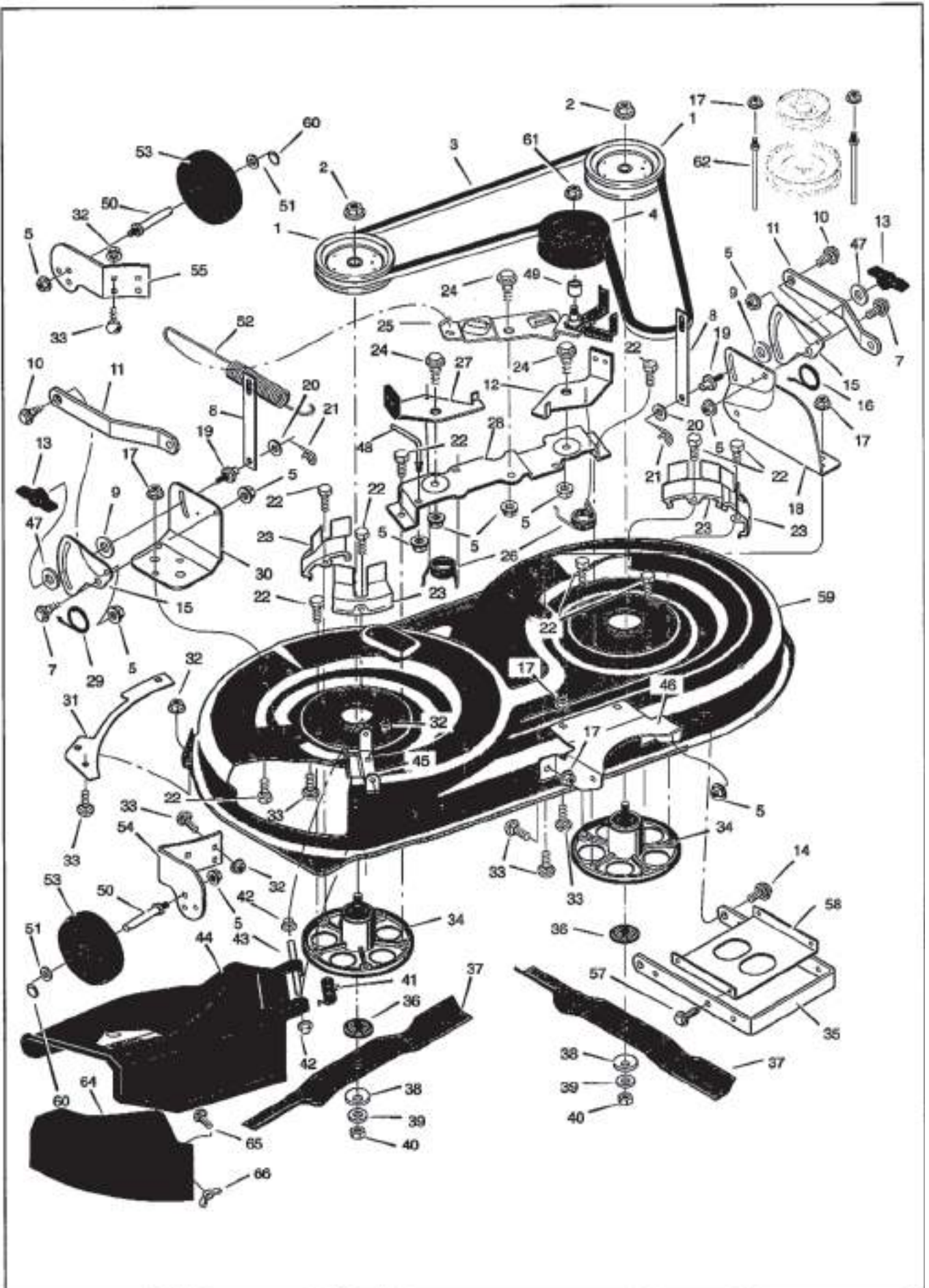
MT 446H - 42" / MT 444H - 40" / MT444T - 38"



KEY#	PART NUMBER	DESCRIPTION	TO SUIT MODEL
1	7004 872 0733	Grip PTO	
2	7004 872 0688	Handle PTO	MT 444T-MT 444H
	7004 872 1919	Handle PTO	MT 446H
3	7004 872 0806	Pad Switch	
4	7004 872 0399	Bolt	
5	7004 872 0734	Grip Lifter	
6	7004 872 1135	Spring	
7	7004 872 1214	Washer	
8	7004 872 1921	Lever Lift	
9	7004 872 0807	Lever PTO	
10	7004 872 1211	Bolt Shoulder	
11	7004 872 1212	Pin Cotter	
12	7004 872 1161	Washer	
13	7004 872 0806	Link PTO	
14	7004 872 1219	Nut Flange	
15	7004 872 1208	Screw	
16	7004 872 1143	Spring	
17	7004 872 1923	Bracket PTO	
18	7004 872 1155	Spring	
	7004 872 1149	Spring	
19	7004 872 1100	Crank PTO	
20	7004 872 1924	Link Lift	
21	7004 872 1927	Link Lift Handle	MT 444H-MT 446H
22	7004 872 1928	Washer	
23	7004-872-1161	Washer	
24	7004-872-1237	Pin Hair	
25	7004-872-1215	Washer	
26	7004 872 1930	Bolt Carriage	
27	7004 872 1932	Lever Assy Lift	
30	7004 872 0665	Pin	
31	7004 872 0661	Bracket Rear Suspension	
32	7004 872 1087	Spacer Lifter	
33	7004 872 1122	Bolt Shoulder	
34	7004 872 1936	Bracket Pivot	MT 444T-MT 444H
36	7004 872 1140	Washer	
37	7004 872 1210	Nut Flange	
38	7004 872 1943	Spring	
39	7004 872 1432	Nut Flange	
40	7004 872 1948	Bracket PTO	
41	7004 872 0654	Hanger Left Deck	
42	7004 872 0653	Hanger Right Deck	
43	7004 872 0817	Rod Hanger	
44	7004 872 1317	Plate Stiffening	
45	7004 872 1951	Plate Stiffening	MT 446H - 42"

MOWER HOUSING

MT 446H - 42° / MT 444H - 40° / MT444T - 36°



MOWER HOUSING

MT 446H - 42" / MT 444H - 40" / MT444T - 38"



KEY#	PART NUMBER	DESCRIPTION	TO SUIT MODEL
1	7004 872 1090	Pulley Jackshaft 38"	MT 444T
	7004 872 0636	Pulley Jackshaft 40"	MT 444H
	7004 872 0822	Pulley Jackshaft 42"	MT 446H
2	7004 872 1144	Nut Hex	
3	7004 872 1145	Belt Mower Drive - 38" Gear	MT 444T
	7004 872 1150	Belt Mower Drive - 40" Hydro	MT 444H
	7004 872 1151	Belt Mower Drive - 42" Hydro	MT 446H
4	7004 872 1099	Pulley Idler	
5	7004 872 1219	Nut Flange	
7	7004 872 1210	Bolt Shoulder	MT 444T-MT 446H
8	7004 872 1924	Link Lift	
9	7004 872 0679	Pad Friction	
10	7004 872 1128	Bolt Shoulder	
11	7004 872 0661	Bracket Suspension	
12	7004 872 0657	Pad Assy Left Brake	
13	7004 872 1205	Knob	
14	7004 872 1210	Bolt Shoulder	MT 444T-MT 444H
	7004 872 0407	Bolt Shoulder	MT 446H
15	7004 872 0674	Plate Suspension	
16	7004 872 1137	Spring	
17	7004 872 1123	Nut	
18	7004 872 0681	Bracket Suspension	MT 444T-MT 444H
	7004 872 0696	Bracket Suspension	MT 446H
	7004 872 1967	Bracket Suspension	MT 444T-MT 444H
19	7004 872 1203	Pin Hanger	
20	7004 872 1215	Washer	
21	7004 872 1237	Pin Hair	
22	7004 872 0400	Bolt	
23	7004 872 0658	Cover Pulley	
24	7004 872 1211	Bolt Shoulder	
25	7004 872 1101	Arm Idler	
	7004 872 1970	Washer (Not Illustrated)	MT 444T Only
26	7004 872 1153	Spring	
27	7004 872 0656	Brake Arm - RH	
28	7004 872 0663	Bracket - Assy Brake 38"	MT 444T
	7004 872 0683	Bracket - Assy Brake 40"	MT 444H
	7004 872 0697	Bracket - Assy Brake 42"	MT 446H
29	7004 872 1136	Spring	
30	7004 872 0659	Bracket Suspension R	MT 444T 38"
	7004 872 1978	Bracket Suspension R	MT 444H 40"
	7004 872 0695	Bracket Suspension R	MT 446H 42"
31	7004 872 0547	Plate 38" - 40"	MT 444T-MT 444H
	7004 872 0611	Plate 42"	MT 446H
32	7004 872 1224	Nut Flange	
33	9027 068 5212	Bolt Carriage	
34	7004 872 1316	Quill Assy HD - 38"/40"/42"	
	7004 872 1730	Upper Seal	NOT SHOWN
35	7004 872 1317	Bracket Suspension	
36	7004 872 1320	Adapter Blade	
37	7004 872 1575	Blade 3-n-1 38"	MT 444T
	7004 872 1574	Blade 3-n-1 40"	MT 444H
	7004 872 1573	Blade 3-n-1 42"	MT 446H

MOWER HOUSING

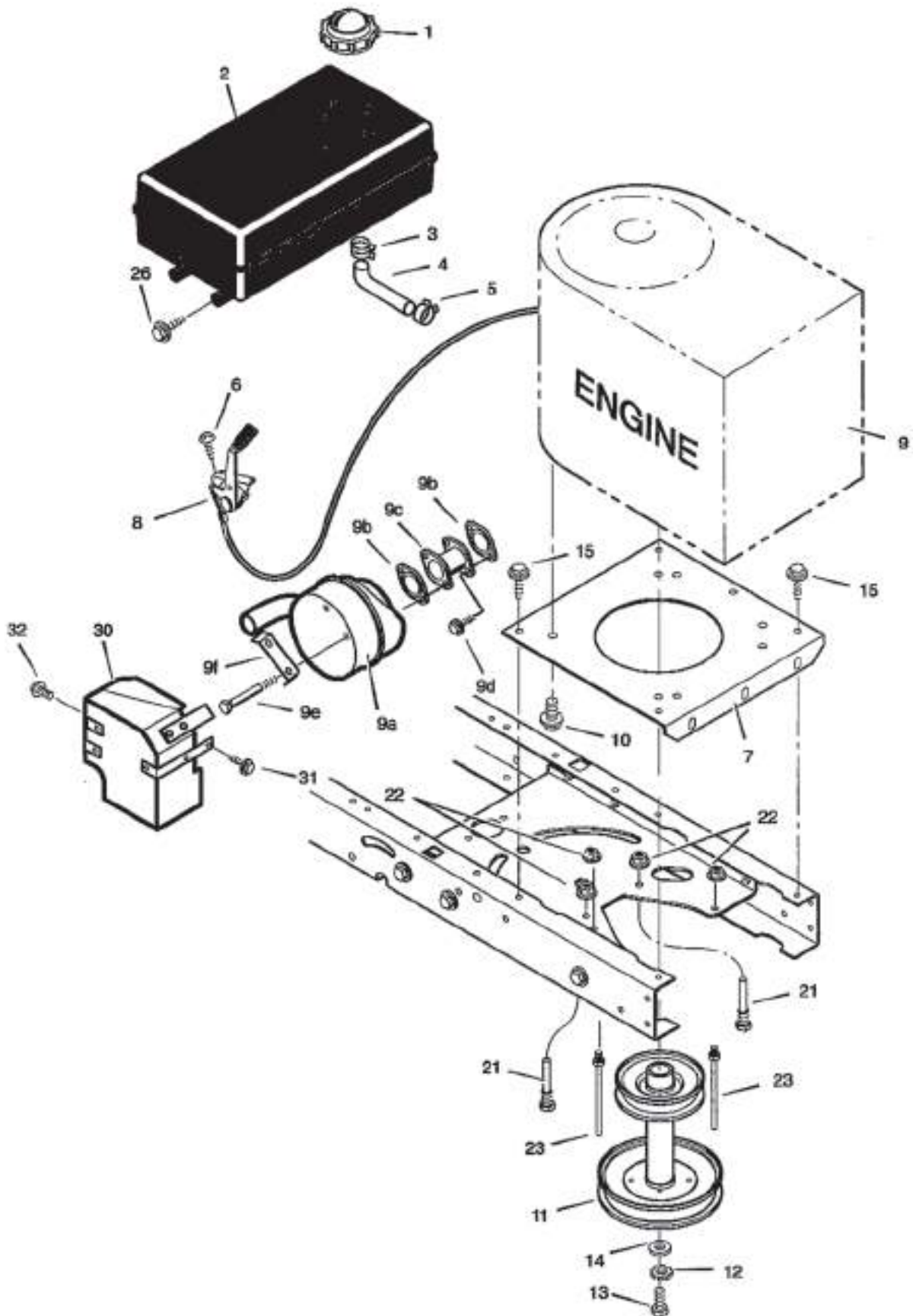
MT 446H - 42" / MT 444H - 40" / MT444T - 38"



KEY#	PART NUMBER	DESCRIPTION	TO SUIT MODEL
38	7004 872 1139	Washer	
39	7004 872 1138	Washer	
40	7004 872 1988	Nut	
41	7004 872 0414	Spring	
42	7004 872 1222	Cap Push On	
43	7004 872 0821	Rod Deflector	
44	7004 872 0756	Deflector Assy	
45	7004 872 0779	Bracket Deflector Hinge	
46	7004 872 1673	Bracket Front Hanger	MT 444T
	7004 872 0682	Bracket Front Hanger	MT 444H
	7004 872 0694	Bracket Front Hanger	MT 446H
47	7004 872 1223	Washer	
48	7004 872 0767	Guide Belt	
49	7004 872 1098	Spacer	
50	7004 872 1245	Bolt Axle	MT 446H
51	7004 872 1215	Washer	MT 446H
52	7004 872 1155	Spring Extension 38" Deck	MT 444T
	7004 872 1149	Spring Extension 40/42"Deck	MT 444H-MT 446H
53	7004 872 0624	Wheel Gage	MT 446H
54	7004 872 0609	Bracket RH Wheel	MT 446H
55	7004 872 0610	Bracket LH Wheel	MT 446H
56	7004 872 1128	Bolt Shoulder	MT 444H - MT 446H
57	7004 872 1208	Screw	MT 444T
58	7004 872 1677	Stiffener	MT 446H Only
59	7004 872 2038	Housing Blade * - 38"	MT 444T
	7004 872 0680	Housing Blade * - 40"	MT 444H
	7004 872 1735	Housing Blade * - 42"	MT 446H
60	7004 872 1251	Ring Locking	MT 446H Only
61	7004 872 0470	Nut Flange	
62	7004 872 0664	Guide Belt	MT 446H
64	7004 872 0784	Cover Mulch Std	MT 444H-MT 446H
65	9027 068 5223	Bolt Carriage	
66	7004 872 1207	Wingnut	
67	7004 872 1967	Bracket Support	MT 444T-MT 444H
*		Includes Key 15-17-18-30-31-32-33-45-46-53-54-55-56	

ENGINE MOUNT

MT 446H - 42" / MT 444H - 40" / MT444T - 38"



ENGINE MOUNT

MT 446H - 42" / MT 444H - 40" / MT444T - 38"



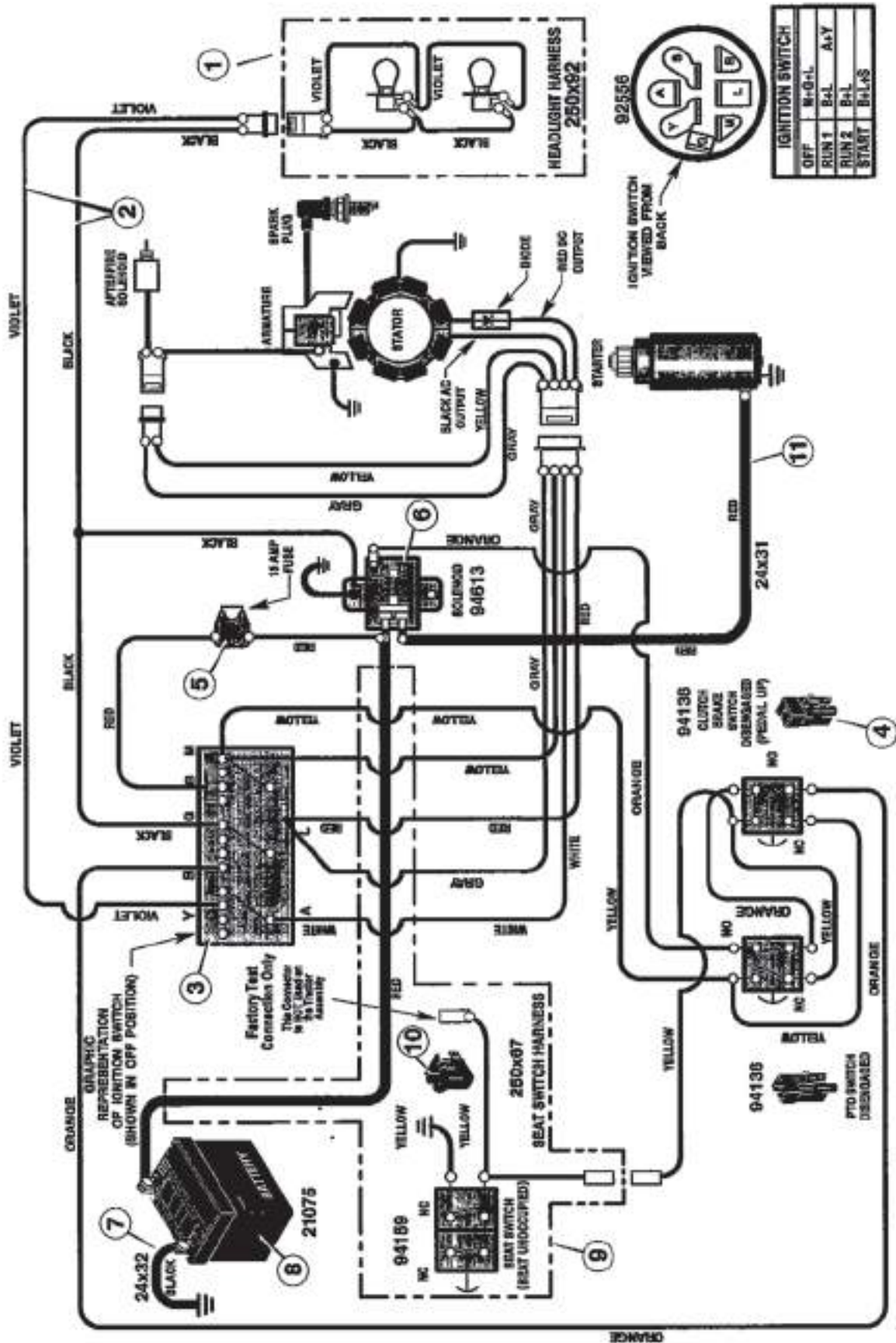
KEY#	PART NUMBER	DESCRIPTION	TO SUIT MODEL
1	7004 872 0595	Fuel cap **	
2	7004 872 1678	Fuel Tank Assy	
3	7004 872 1682	Hose Clamp **	
4	7004 872 1683	Fuel Line Cut to Length	
5	7004 872 1682	Hose Clamp **	
6	7004 872 0460	Screw	
7	7004-872-0649	Plate Engine	
8	7004 872 0730	Throttle Control	
9		Briggs & Stratton	MT 444T - 38"
		Briggs & Stratton	MT 444H - 40"
	Type 0235E1	Code 0403227E	MT 446H - 42"
9a	7004 872 1685	Muffler	
9b	7004 872 0524	Gasket Muffler	
9c	7004 872 0799	Adapter Muffler	
9d	7004 872 1688	Screw Adapter	
9e	7004 872 1687	Bolt Muffler	
9f	7004 872 0604	Lock Plate	
10	7004 872 0400	Bolt Engine Mount	
11	7004 872 1109	Stack Pulley Assy	MT 444H/MT 446H - 40/42" Hydro
12	7004 872 1192	Lockwasher	
13	7004 872 0410	Bolt Hex	
14	7004 872 0444	Washer	
15	7004 872 1208	Screw	
21	7004 871 1794	Guide Belt	
22	7004 872 1123	Nut Flange	
23	7004 872 0664	Guide Belt	
26	7004 872 1692	Screw	
30	7004 872 1693	Shield Heat	
31	7004 872 1167	Screw	
32	7004 872 1694	Screw	

* For information on replacement Parts contact the Engine Manufacturer

** These parts are included with key number 2

ELECTRICAL SYSTEM

MT444T - 38"



ELECTRICAL SYSTEM

MT444T - 38"



KEY#	PART NUMBER	DESCRIPTION	TO SUIT MODEL
1	7004 872 1706	Harness Light Wire	
	7004 872 1902	Socket Light	
	7004 872 1298	Bulb Light	
2	7004 872 1903	Harness Chassis	
3	7004 872 0619	Switch Ignition	
	7004 872 0447	Key Ignition	
	7004 872 0526	Nut Hex	
	7004 872 0525	Cap Ignition	
4	7004 872 0678	Switch Limit	
5	7004 872 0875	Fuse	
	7004 872 1045	Holder Fuse	
6	7004 872 1303	Solenoid	
	7004 872 1200	Screw Mounting	
	9212 259 5020	Locknut	
7	7004 872 1154	Cable Battery Ground	
	7004 872 1200	Screw Ground Cable	
8	7004 872 1711	Boot Battery Positive	
	7004 872 1712	Battery	
	9027 068 5225	Bolt Carriage	
	7004 872 1152	Wingnut	
9	7004 872 1713	Harness Seat Switch Wire	
10	7004 872 0689	Switch Seat Sensor	
11	7004 872 1715	Cable	

ELECTRICAL SYSTEM

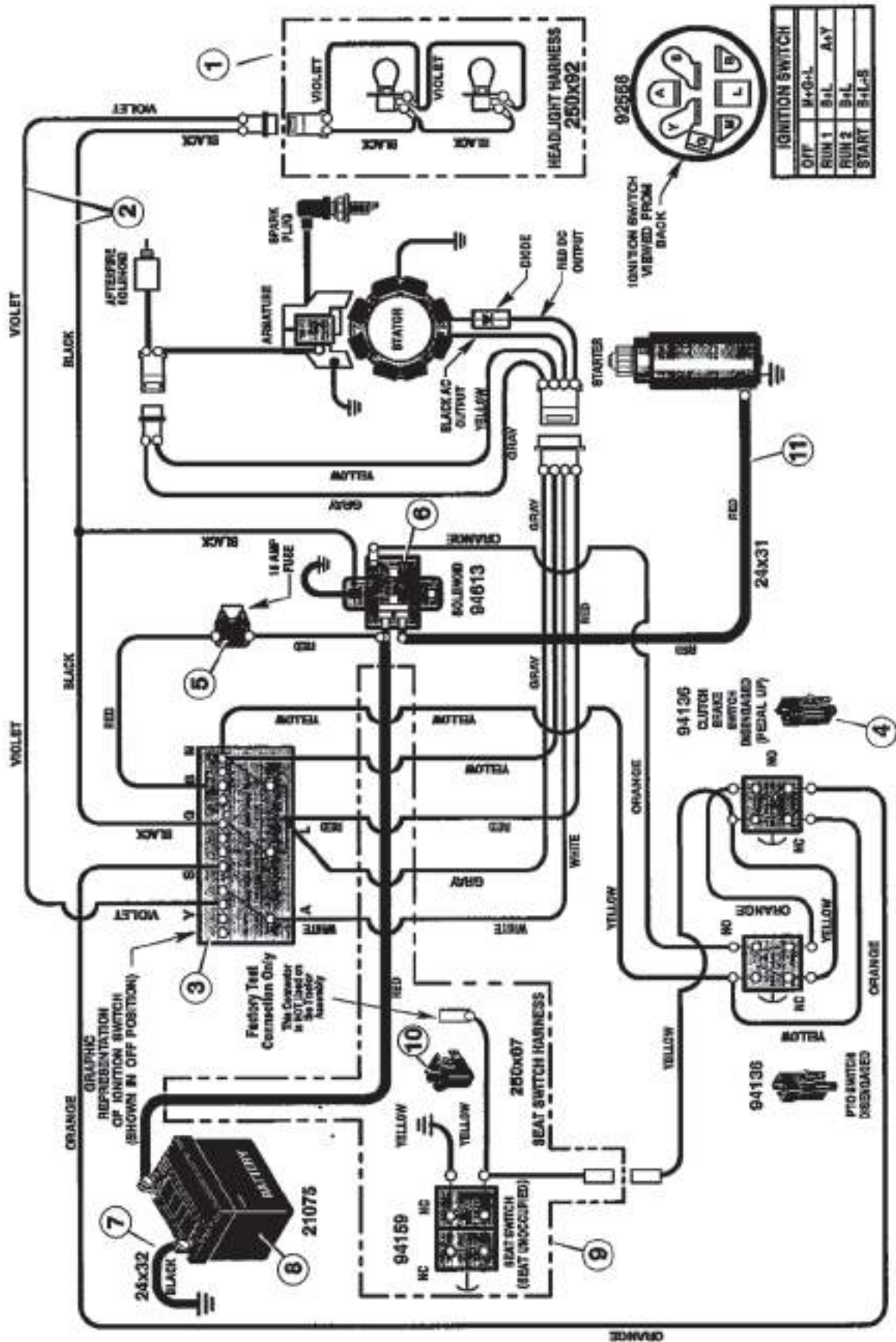
MT444H - 43*



KEY#	PART NUMBER	DESCRIPTION	TO SUIT MODEL
1	7004 872 1706	Harness Light Wire	
	7004 872 1902	Socket Light	
	7004 872 1298	Bulb Light	
2	7004 872 1903	Harness Chassis	
3	7004 872 0619	Switch Ignition	
	7004 872 0447	Key Ignition	
	7004 872 0526	Nut Hex	
	7004 872 0525	Cap Ignition	
4	7004 872 0678	Switch Limit	
5	7004 872 0875	Fuse	
	7004 872 1045	Holder Fuse	
6	7004 872 1303	Solenoid	
	7004 872 1200	Screw Mounting	
	9212 259 5020	Locknut	
7	7004 872 1154	Cable Battery Ground	
	7004 872 1200	Screw Ground Cable	
8	7004 872 1711	Boot Battery Positive	
	7004 872 1712	Battery	
	9027 068 5225	Bolt Carriage	
	7004 872 1152	Wingnut	
9	7004 872 1713	Harness Seat Switch Wire	
10	7004 872 0689	Switch Seat Sensor	
11	7004 872 1715	Cable	

ELECTRICAL SYSTEM

MT446H - 42"



ELECTRICAL SYSTEM

MT446H - 42°



KEY#	PART NUMBER	DESCRIPTION	TO SUIT MODEL
1	7004 872 1706	Harness Light Wire	
	7004 872 1902	Socket Light	
	7004 872 1298	Bulb Light	
2	7004 872 1903	Harness Chassis	
3	7004 872 0619	Switch Ignition	
	7004 872 0447	Key Ignition	
	7004 872 0526	Nut Hex	
	7004 872 0525	Cap Ignition	
4	7004 872 0678	Switch Limit	
5	7004 872 0875	Fuse	
	7004 872 1045	Holder Fuse	
6	7004 872 1303	Solenoid	
	7004 872 1200	Screw Mounting	
	9212 259 5020	Locknut	
7	7004 872 1154	Cable Battery Ground	
	7004 872 1200	Screw Ground Cable	
8	7004 872 1711	Boot Battery Positive	
	7004 872 1712	Battery	
	9027 068 5225	Bolt Carriage	
	7004 872 1152	Wingnut	
9	7004 872 1713	Harness Seat Switch Wire	
10	7004 872 0689	Switch Seat Sensor	
11	7004 872 1715	Cable	

DECALS

MT 446H - 42" / MT 444H - 40" / MT444T - 38"



PART NUMBER	DESCRIPTION	MT 446H-42"	MT 444H-40"	MT 444T-38"
7004 872 5000	Decal - VIKING	X	X	X
7004 872 5001	Decal - Lens cover	X	X	X
7004 872 5002	Decal - Deck Leveling	X	X	X
7004 872 5003	Decal - WARNING	X	X	X
7004 872 5014	Decal - CUTTING HEIGHT	X	X	X
7004 872 5006	Decal - CUT FINGER	X	X	X
7004 872 5007	Decal - NO STEP - LH Deck	X	X	X
7004 872 5008	Decal - Warning Load Limit	X	X	X
7004 872 5004	Decal - Deck Height 7 POS Lge Frame	X		
7004 872 5005	Decal - Deck Height 7 POS Sml Frame		X	X
7004 872 5009	Decal - DUMP VALVE HYDRO	X	X	
7004 872 5010	Decal - CLUTCH / BRAKE			X
7004 872 5011	Decal - BRAKE / PARK BRAKE	X	X	
9212 259 5012	Decal - 5 SPEED			X
7004 872 5013	Decal - HYDRO DRIVE	X	X	
7004 872 5015	Decal - Dash Symbols W1		X	X
7004 872 5016	Decal - Ignition Engage & Park Brake	X		
7004 872 5017	Decal - Throttle Single with Choke	X		
7004 872 5018	Decal - Deck Gauge Wheel Instruction	X		
7004 872 5019	Decal - Deck Gauge Wheel Leveling	X		
7004 872 5020	Decal - Model Hood	X		
7004 872 5030	Decal - Model Hood		X	
7004 872 5040	Decal - Model Hood			X
7004 872 5021*	Decal - 17/42	X		
7004 872 5031*	Decal - 15,5/40		X	
7004 872 5041*	Decal - 14.5/38			X
7004 872 5022	Decal - ENGINE 17hp	X		
7004 872 5032	Decal - ENGINE 15.5hp		X	
7004 872 5042	Decal - ENGINE 14.5hp			X

* FITS RH & LH

AXLE, ASSEMBLY

MT 446H - MT 444H - MT 444T



KEY#	PART NUMBER	DESCRIPTION	TO SUIT MODEL
1	7004 872 1851	Wheel, Steering	MT446H-42"
	7004 872 0794	Wheel, Steering	MT444H-40"
	7004 872 9004	Wheel, Steering	MT444T-38"
2	7004 872 1854	Post, Steering	
3	7004 872 1191	Insert, Steering Wheel	
4	7004 872 0673	Bearing	
5	7004 872 1857	Nut, Flange	
6	7004 872 1180	Bolt, Shoulder	
7	7004 872 1091	Gear, Pinion	
8	7004 872 1129	Ring, Snap	
9	7004 872 0671	Gear, Sector	
10	7004 872 0672	Bearing	
11	9008 319 9040	Bolt	
12	7004 872 1867	Plate, Steering	
13	7004 872 0649	Plate, Engine	
14	7004 872 1224	Nut, Flange	
15	7004 872 1126	Nut, Flange	
16	7004 872 1877	Bracket, Hanger	
17	7004 872 0650	Axle, Hanger	
18	7004 872 0411	Bolt	
19	7004 872 0424	Pin, Cotter	
20	7004 872 1086	Bearing	
21	7004 872 1880	Spindle Assy, LH	
22	7004 872 1881	Bolt	
23	7004 872 1884	Washer	
24	7004 872 1885	Washer	
25	7004 872 1219	Nut, Flange	
26	7004 872 1891	Axle, Assembly	MT446H-42"
	7004 872 9005	Axle, Assembly	MT444H-40"
	7004 872 1890	Axle, Assembly	MT444T-38"
26a	7004 872 9006	Grease Nipple	MT446H-42"
27	7004 872 0825	Drag Link, LH	
28	7004 872 1336	Spindle Assy, RH	
29	7004 872 0824	Drag Link, RH	
30	7004 872 9007	Screw	
31	7004 872 1050	Bearing, Wheel (Set of 4)	
32	7004 872 0453	Stem, Valve	
33	Not Stocked	Tyre	MT446H-42"
	Not Stocked	Tyre	MT444H MT444T
33a	7004 872 1043	Tube	MT446H-42"
	Not Stocked	Tube	MT444H-40"
	Not Stocked	Tube	MT444T-38"
34	7002 872 1907	Wheel & Tyre Assy	MT4446H MT444H
	7002 872 1908	Wheel & Tyre Assy	MT444T-38"
35	7004 872 1249	Washer	
36	7004 872 1249	Washer	
37	7004 872 0440	Washer	
38	7004 872 0741	Dust Cap	
39	7004 872 1913	Screw	
40	7004 872 0580	Bellows	
41	7004 872 0399	Screw	
42	7004 872 0443	Washer	
43	7004 872 1914	Cap, Hub	MT4446H MT444H
44	7004 872 1327	Retainer	MT4446H MT444H

AXLE, ASSEMBLY

MT 440H - MT 444H - MT 444T

VIKING

