

KATO

**SUPER
EXCEED**

**HD1430III
HD1430III-LC**

FULLY HYDRAULIC EXCAVATOR

Bucket capacity: 0.7m³ - 1.8m³(ISO)

*Engine output: 183kW/2,150min⁻¹
(249PS/2,150rpm) (ISO Net)*

*Operating weight: 30,200kg (HD1430III)/
31,100kg (HD1430III-LC)*



**Powerful Machine
Harmonized with Your**

FHD



1430II

Demands



High Power & Speedy Operation

Digging force Arm: 162 kN

Bucket: 223 kN

Improvement in slewing torque: 12% up^{*1}

Reliable Undercarriage

Heavy-duty track guard

Heavy-duty front idler support

Tough track-link & shoe plate

Fatigue Free & Comfortable Cabin

Auto air conditioner

U.V-cut glass

Mono piece big & wide side window

Wide range adjustable seating position

Anti-static-electricity fabric seat

Powerful New Engine

Max. Output: 183 kW/2,150 min⁻¹(ISO Net)

Max. Torque: 831 N·m/1,800 min⁻¹(ISO Net)

Improvement in fuel consumption: up to 15%^{**1}

(general H mode)

Durable Cooling System

High Performance radiator and aluminum oil cooler

Easy access for cleaning

580 liter fuel tank, 18 hours continuous operation.^{2}**

Replacement Interval of Hydraulic Oil : 5000 hours

*1. Based on the comparison with HD1430

**2. Depends on condition of machine and type of work



Technical Specifications



● Track system (left side view)

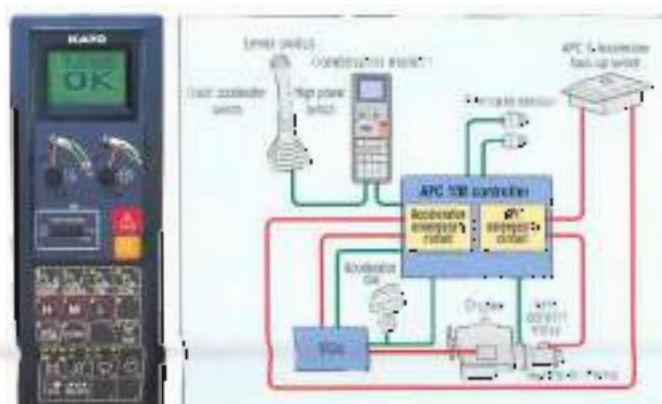


● Hydraulic Control Lever

● Fig. 4-11



● Controller (L&R) ● APC 130 (left)



ENGINE

Model	Mitsubishi 6D16-TLE2A, 4 cycle, intercooler turbo charged diesel engine
Number of cylinders	6
Bore & Stroke	118mm X 115mm
Total displacement	7.54 l
Rated output	183kW/2,150mm (249PS/2,150rpm) (ISO Net)
Max. torque	831N·m/1,600mm (84.7kgf·m/1,600rpm) (ISO Net)
Compression ratio	17.5 : 1
Combustion system	Direct injection
Specific fuel consumption	220g/kWhour (102g/PS hour)
Cooling system	Pressurized water circulated by a centrifugal pump with thermostat
Lubrication system	Pressurized oil fed by a gear pump through full flow and bypass cartridge filter
Starter	Electric, 24V-54W
Generator	Alternator, 24V-35A
Governor	Electric
Air cleaner	Dry type filter

SWING SYSTEM

Drive	Axial piston motor with shockless valve and reduction gear
Brake	A hydraulic parking brake locks automatically when the swing control lever is in the neutral position and a mechanical parking brake which is applied when the safety lock lever is pulled backwards, the engine is turned off or the swing control lever is in the neutral position
Lubrication	Completely housed and grease lubed
Max. swing speed	10.0mm (10.0rpm)
Tail swing radius	3,460mm
Min. front swing radius	4,640mm

BOOM, ARM AND BUCKET

Boom cylinders	Two, double acting
Bore & Stroke	100mm X 1,150mm
Arm cylinder	One, double acting
Bore & Stroke	170mm X 1,810mm
Bucket cylinder	One, double acting
Bore & Stroke	150mm X 1,250mm
Lubrication	Grease ripples, with centralized greasing for remote points
Bucket digging force	223kN (22,800kgf)
(High power)	253kN (23,900kgf)
Arm digging force	162kN (16,500kgf)
(High power)	170kN (17,000kgf)
Note	High power can be used with SHC arm and short arm

TRAVEL SYSTEM

Drive	Independent axial piston motor with reduction for each side
Brakes	Independent disk parking brake for each side, applied automatically when the travel levers are in the neutral position
Track shoes	4P each side HD1430III 51 each side HD1430III-LC
Roller	2 upper, 9 lower (9 for LC)
Track adjustment	Grease cylinders with recoil springs
Lubrication	Sealed-for-life rollers and front idlers with floating seals
Travel speed	High 0 ~ 5.5 km/h Medium 0 ~ 3.7 km/h Low 0 ~ 2.5 km/h
Gradeability	70% (35°)
Max. drawbar pull	254.8 kN (27,000 kgf)
Ground clearance (over grouser bar)	500 mm
Track length	4,640 mm HD1430III 4,970 mm HD1430III-LC

HYDRAULIC SYSTEM

Pumps	Variable double piston pump and gear pump controlled by Automatic Power Control (APC) system
Max. discharge flow	24.361 L/min
Max. discharge pressure	31.1 MPa (320 kgf/cm ²)
Max. discharge pressure (travel circuit only)	32.0 MPa (335 kgf/cm ²)
Oil filtration	Full-flow filter with replaceable element, a drain cartridge filter and a pre-line filter and a suction strainer
Control valves	5+1 section multiple control valves (with one hose sensor circuit)
Pilot pump	Gear type
Cooler	Finned tube forced ventilation
Pressure relief valves	Primary and secondary on each circuit

SERVICE DATA

Fuel tank	580 L
Cooling system	16 L
Engine oil	32 L
Track drives	2 x 4.0 l
Swing drive	11.3 l
Hydraulic oil tank	
level	250 l
(system)	485 l
In standard figure, with the 9.14 m arm, 600 mm grouser shoes and 1.4 m ³ (ISO) bucket.	
Operating weight	30,200 kg HD1430III 31,100 kg HD1430III-LC
Ground pressure	61 kPa (0.62 kgf/cm ²) HD1430III 58 kPa (0.59 kgf/cm ²) HD1430III-LC

CAB & CONTROLS

Type	All weather sound suppressed, 1,000 mm wide pressed steel cab mounted on 6 point viscous mounting
Right hand lever	Controls the boom & bucket
Inner right hand lever (with foot pedal)	Controls the right hand track
Inner left hand lever (with foot pedal)	Controls the left hand track
Left hand lever	Controls the arm & swing
Pilot control	Travel, boom, arm, bucket and swing
Engine throttle	Electric "Accel dial"
Meter & gauges	Hydrometer, water temperature and fuel level
Monitor display	Engine oil pressure, engine coolant, hydraulic oil filter, hydraulic oil temperature, water temperature, water level, fuel level, battery charge, APC monitor and air cleaner
Indicator lamps	Caution lamp & Engine preheater indicator lamp & Engine diagnosis lamp
Working lights	Provided on the boom left side and mounted on the frame
Lubrication chart	Inside the tool box



● 25.0 MPa hydraulic pressure indicator



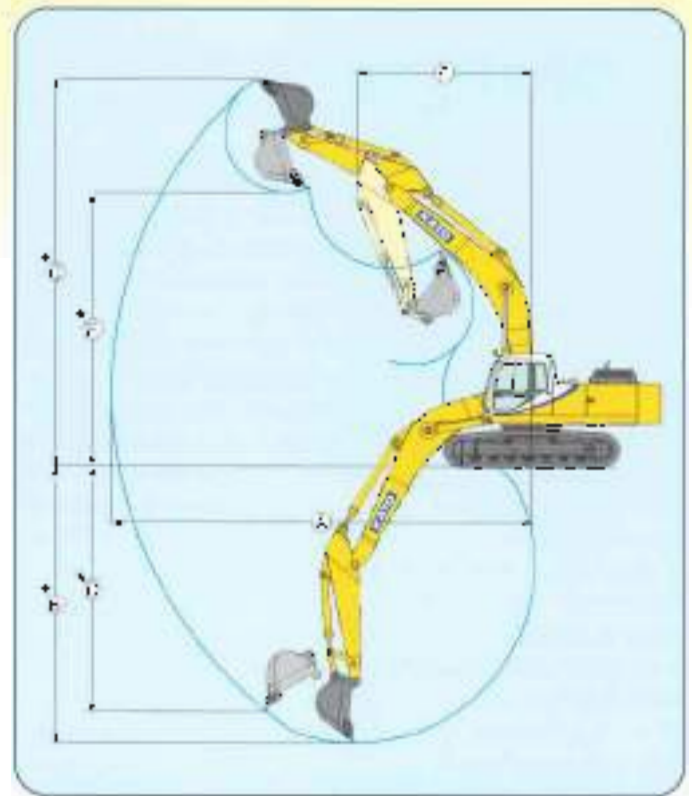
Working Ranges

Extension Arm



Range	Arm	Reach (mm)		
		Short Arm (2.18m)	STD Arm (3.14m)	Long Arm (4.14m)
* A Max digging depth		10,600	11,150	12,170
* B Max digging depth		6,200	7,400	8,600
* C Max digging height		10,140	10,350	10,610
* D Max vertical wall		5,140	6,000	7,480
* E Max compact depth		7,110	7,250	7,570
* F Max swing radius		4,550	4,840	4,880

*A-F to ground line



Bucket

Type of bucket		Backhoe bucket					Slope leveling bucket	Rock bucket	Reaper
Bucket capacity	m ³ ISO	2.7	3.1	3.2	3.6	3.8	—	0.9	—
Bucket width	with side cutters, mm	750	1,100	1,200	1,475	1,600	2,100	—	—
	with side cutters, mm	860	1,210	1,300	1,580	—	1,200	870	—
Bucket weight	kg	820	10,100	1,140	1,250	1,300	260	1,700	600
Number of bucket teeth		3	4	4	6	6	—	5	1
Shape of bucket									
Standard boom	Short arm	●	●	●	●	□	○	○	●
	Standard arm	●	●	●	▲	□	○	○	●
	Long arm	●	●	▲	×	×	○	×	×
	Extendable arm	●	▲	+	×	×	×	×	×

● Standard boom ▲ Long arm + Extendable arm □ Locking ○ Unstable × Unusable

Track Shoes

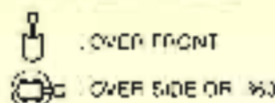
Type of shoe		Grass shoe					Final shoe
Shoe width	mm	600	700	800	911	763	
Overall width	mm	3,200	3,700	3,400	3,510	3,360	
Ground pressure (Pa) (kg/cm ²)	HD (4500)	50 (1.02)	50 (1.01)	47 (1.00)	42 (0.85)	51 (1.02)	
	SD (3500)	55 (1.11)	50 (1.01)	45 (1.00)	40 (0.81)	48 (1.00)	
Net weight (kg) per pair	HD (4500)	1,110	490	480	41,000	41,650	
	SD (3500)	1,110	490	480	11,000	41,640	

● Yellow colored area meets standard

Lifting Capacities



A: REACH FROM SWING CENTERLINE
 B: BUCKET HOOK HEIGHT
 C: LIFTING CAPACITIES



HD1430II 600mm Shoe, 6.15m Boom, 3.14m Arm, 1.4m³ Bucket (1,140kg)

Unit: 1000kg

LIFT POINT HEIGHT B (m)	LIFT POINT RADIUS A (m)																MAXIMUM LIFT POINT RADIUS				
	2.00		3.00		4.00		5.00		6.00		7.00		8.00		9.00		⊥	⊙	m		
7.00																			* 3.05	* 3.00	3.46
6.00																			* 5.27	* 5.11	8.98
5.00																			* 5.75	* 5.75	9.37
4.00																			* 5.96	* 4.91	9.96
3.00																			* 5.96	* 4.93	9.96
2.00																			* 6.44	* 4.65	9.79
1.00																			* 8.11	* 9.11	9.71
0.00																			* 7.03	* 7.03	9.13
-1.00																			* 6.46	* 8.46	9.13
-2.00																			* 9.13	* 7.09	7.80
-3.00																			* 7.01	* 7.01	6.37
-4.00																			* 6.37	* 6.27	5.96
-5.00																			* 5.96	* 4.97	5.75
-6.00																			* 5.96	* 4.97	5.75

HD1430III-LC 600mm Shoe, 6.45m Boom, 3.14m Arm, 1.4m³ Bucket (1,140kg)

Unit: 1000kg

LIFT POINT HEIGHT B (m)	LIFT POINT RADIUS A (m)																MAXIMUM LIFT POINT RADIUS				
	2.00		3.00		4.00		5.00		6.00		7.00		8.00		9.00		⊥	⊙	m		
7.00																			* 5.03	* 5.03	6.46
6.00																			* 5.27	* 5.25	8.98
5.00																			* 5.75	* 5.75	9.37
4.00																			* 5.96	* 4.97	9.96
3.00																			* 5.96	* 4.97	9.96
2.00																			* 6.44	* 4.73	9.79
1.00																			* 8.11	* 9.11	9.71
0.00																			* 7.03	* 7.03	9.13
-1.00																			* 6.46	* 8.46	9.13
-2.00																			* 9.13	* 7.29	7.80
-3.00																			* 7.01	* 7.01	6.37
-4.00																			* 6.37	* 6.27	5.96
-5.00																			* 5.96	* 4.97	5.75
-6.00																			* 5.96	* 4.97	5.75

- NOTE**
1. All capacities are based on Level 1 (L1) lift.
 2. All capacities are based on a maximum lift capacity of 15% of maximum rated lift.
 3. Capacity is limited by lift height. Please refer to the performance specifications.
 4. All capacities are based on a maximum lift height of 20m from the swing centerline.
 5. The maximum lift capacity is limited by the maximum lift height of the machine.
 6. All capacities are based on the weight of the bucket and the weight of the lift. The weight of the lift is based on the above lift capacity.
 7. Capacity is applicable to the machine as shown in the photo, and equipped with the following options: L1C.
 8. The capacity may be reduced with the weight of the lift and the weight of the machine.

Standard Equipment

- New HPC mode
- New auto stop - fine track stop
- Multi-mode display monitor
- Adjustable monitor arm
- 2-speed gear mode
- Shunting mode
- Automatic track speed change
- Spring assist on up/down motion
- Speed, pressure, fuel response
- Multi-position operator's seat
- Adjustable seat suspension
- Adjustable operator's seat
- Rear armrest, escape window
- Safety light monitor in cabin area
- 2-working lights
- Upper track roller set & pin roller set
- Boom roller guide
- Arm roller guide
- Toggling track bracket (high speed)
- Semi-trailless axle
- Automatic swing locking brake
- Automatic road parking brake
- Fuel filter separator (1) (left hand side)
- Fuel air filter (right side)
- Track guide (1) per each side
- Track guide (2) per each side (L1C)
- Heat and noise shield (2) sides
- Tire Wall

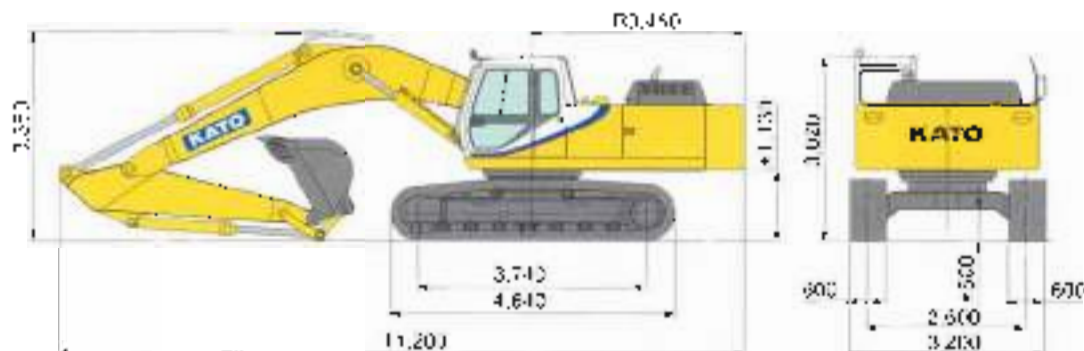
Optional Equipment

- Tire management light
- Seat belt
- Automatic emergency stop (air conditioner)
- 15-A fuel tank container with AC
- Cabin heater
- Auto monitoring for auto stop (L1C)
- 2-speed mode
- Working light - Cat left side
- Working light - Rear right side
- Working light - Cat right side
- Cat access step
- Oil sump pump
- Cat hood lift pad
- Cat hood lift monitor
- Cat hood pad
- Tire protection
- Cabnet
- Safety warning light
- Tire alert
- Working mode
- Air cleaner (dust detector)
- Tire temperature sensor
- Fuel cut
- Track guard, slip and self
- DME Package

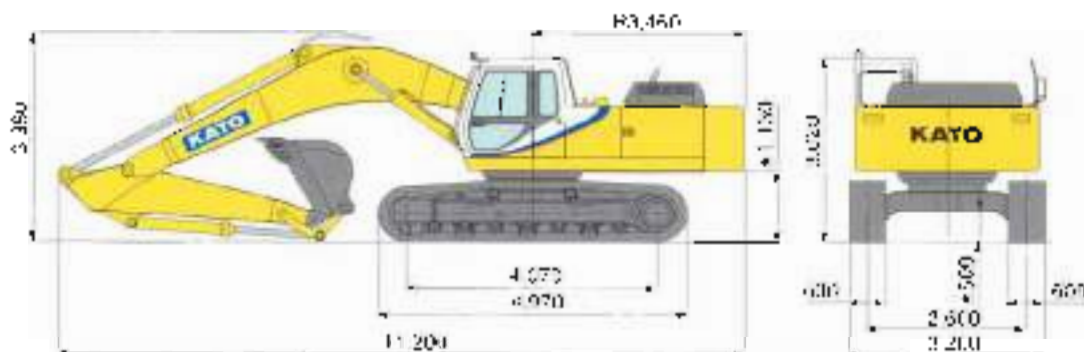
Dimensions

HD1430 III

Unit: mm



HD1430 III-LC



*L220 g14201 001

Additional images to

NOTE: Illustrations may not reflect special features of KATO products and their features are subject to improvement and design without notice.



KATO WORKS CO., LTD.

Specifications subject to change without notice

(1300 65 8888)

Website: www.btequipment.com.au

BT
EQUIPMENT
BT Equipment Pty Ltd
ABN 89 094 476 141

BRISBANE
SYDNEY
MELBOURNE
ADELAIDE
PERTH

10/14 Ansoner Road, Rocker QLD 4106
11 Ferngrove Place, South Granville NSW 2142
40/46 Frankston-Dandenong Road, Dandenong VIC 3175
906 Main North Road, Mewsun Lakes SA 5005
50 Great Eastern Highway, South Guildford WA 6055

Phone	Fax
(07) 0372 6400	(07) 3876 1660
(02) 9740 7200	(02) 8780 7200
(03) 9554 0000	(08) 8654 0398
(08) 8292 0292	(08) 0260 3020
(08) 9476 0600	(08) 9479 0689