

# **WARRANTY CONDITIONS**

## **Warranty Coverage :**

LS Mtron Tractor Division, herein referred to as LS Mtron, undertakes to replace or repair any part of a LS Mower where damage has been proven to be caused by defects in material or workmanship.

This Warranty is valid for a period of 1 year from the date of the original retail sale. Parts replaced or repaired under the terms of this Warranty are guaranteed only until the original warranty expires. Warranty only applies to the original purchaser.

It is further understood and agreed that the defect should be immediately reported to the Selling Dealer. The Selling Dealer will generally perform Warranty repairs or replacements and the Purchaser shall deliver the LS Mtron Mower to the Dealer's place of business or repair.

The obligation of LS Mtron to the Purchaser under this Warranty is limited to the repair or replacement of defective parts by an authorized LS Mtron dealer. Repair or replacement in accordance with this Warranty shall constitute fulfillment of all liabilities of LS Mtron and the Selling Dealer in respect to LS Mtron Mowers.

There are no warranties beyond those which expressly appear herein. Any implied warranty of merchantability or fitness for a particular purpose is specifically excluded here from.

## **Warranty Provisions :**

LS Mtron's liability under this warranty is subject to the observance by the Purchaser of the following provisions:

- ▶ The purchaser shall at all times in the operation of any LS Mtron Product, use those brands and grades of lubricating oils, lubricants or fuel and spare parts officially approved by LS Mtron.
- ▶ The LS Mtron Mowers shall have been used in accordance with the procedures specified in the Operator's Manual. This Warranty does not extend to damage resulting from misapplication, abuse, misuse, failure to perform maintenance, negligence, fire, accidents or changes or faulty mounting carried out by the Purchaser. When making a Warranty exchange of parts, the Purchaser shall compensate LS Mtron for the time that the parts have been used if they have been exposed to extreme wear.
- ▶ Compensation is not paid for physical harm, deadlock, resulting damages or other losses.
- ▶ To obtain warranty service, the Purchaser must (1) report the product defect to an authorized LS Mtron dealer and request repair within the applicable warranty term and (2) present evidence of purchase.
- ▶ The Warranty shall be void if the LS Mtron Mower has been altered or repaired outside of a LS Mtron dealership or travel of dealer personnel to customer location for Warranty repair. The customer shall also pay any premium for overtime labor requested by the customer.
- ▶ Temporary repairs or additional costs due to the work being performed after normal working hours will not be compensated.
- ▶ The above warranty is in lieu of all other warranties on LS Mtron's behalf and neither party assumes any other liability in connection with LS Mtron's Products.

## **Right To Make Design and Product Changes :**

LS Mtron reserves the right to make changes in the design and other changes in its LS Mtron Products at any time without incurring any obligation with respect to any product previously ordered, sold or shipped.

## **PLEASE NOTE :**

Make sure all potential operators of the this equipment review this manual and all safety messages contained within



This safety symbol indicates important safety messages in this manual. When you see this symbol, carefully read the message that follows and be alert to the possibility of personal injury or death.

# **Table of Contents**

■ Safety Precautions	-----	4
■ Safety Decals	-----	6
■ Mower Specification	-----	8
■ Introduction	-----	9
■ Lubrication and Maintenance	-----	10
■ Blade Replacement	-----	12
■ Spare Parts	-----	13
■ Torque Tightening Chart	-----	14
■ Parts Illustrations	-----	15
General Information	-----	15
Finish Mower Assembly	-----	16
Gear Box Assembly	-----	20
Blade Assembly	-----	22
Wheel Assembly	-----	23
Decals	-----	24
■ Mower Set-Up	-----	25

# **SAFETY PRECAUTIONS**

Most tractor and/or Mower equipment accidents can be avoided by following simple safety precautions. The safety information given in this manual does not replace safety codes, insurance requirements, federal, state, and local laws. Make sure your machine has the correct equipment required by your local laws and regulations. Understand that your safety and the safety of other persons are measured by how you service and operate this Mower.

Know the position and operations of all controls before you try to operate. Make sure you check all controls in a safe area before starting.

Read this manual completely and thoroughly and make sure you understand all controls. All equipment has a limit. Make sure you are aware of the stability and Mowing characteristics of this Mower before you begin operation.



This safety alert symbol indicates important safety messages in this manual. When you see this symbol, carefully read the message that follows and be alert to the possibility of personal injury or death.



## **SAFETY PRECAUTIONS**



### **CHECKS BEFORE USE**

- ▶ LS Mtron grooming mower described in this manual have been designed to mow lawn only.
- ▶ LS Mtron grooming mower is designed to be combined with 2HP~40HP tractors equipped with a category-1 3point link system a 540-rpm clockwise PTO.

### **ADDING OIL AND INJECTING GREASE**

- ▶ When adding the oil, please stop the tractor's engine.
- ▶ Often injecting grease at BLADE ASSMBLY #1, #2, #3 part and WHEEL ASSEMBLY part.

### **CHECKS BEFORE MOVE FORWARD & BACKWARD**

- ▶ Stay clear when the mower is running.
- ▶ Never step on the machine while it is driving and during transport.
- ▶ Move backward at slow speed. Inspect backward and under the mower.

### **TRANSPORT**

- ▶ Always disengage the PTO for transport. Avoid that the mower touches the tractor when raised and that the tractor lower arms are stabilized and do not touch the inside of the tires.
- ▶ Check that the PTO does not touch the front of the mower deck in the raised position.
- ▶ Travel at a safe speed, especially on rough ground. Allow adequate room for vehicles to pass when traveling on the road.

### **CLOTHES & PROTECTIVE EQUIPMENT**

- ▶ The operator must wear the suitable clothing and personal protective equipment at while working on the mower or running it.
- ▶ Use safety gloves & safety glasses or masks, to protect the operator's eyes and face. Wear safety shoes.

### **CHECKS BEFORE START-UP**

- ▶ Make sure that the mower and the tractor are certainly connected.
- ▶ Check the gearbox oil and grease state.
- ▶ Belt tension : Maintain to be just tight enough to prevent slipping.
- ▶ Without using proper hinge pins & related lynch pins.

# **SAFETY PRECAUTIONS**



## **SAFETY PRECAUTIONS**



### **INSPECTION ITEMS**

- ▶ Before replacing the blades, turn the tractor engine off, pull the parking brake, disengage the power take off, rise the mower using the tractor lift, and install supports to prevent accidental dropping of the machine.
- ▶ Hooking up to the tractor
  - Nobody is standing between the tractor and the mower.
  - Make sure that the engine is off, the power take off disengaged and the handbrake engaged when carrying out when connecting the mower to the tractor.
  - Make sure that the tractor drawbar does not interfere with either hooking up the mower or running the PTO. The tractor top link needs to be easily adjustable in length. Position the mower behind tractor on a level surface. Make sure all lift pins and related lynch pins are in place.
  - Make sure that the tractor PTO shaft and the mower input shaft are connected.
- ▶ Safety operation
  - Do not place your hands, inside the machine when it is running.
  - Do not use the mower to transport people or objects when it is running or during transport.
  - When rising the mower, slow down PTO speed 20% of normal and only raise as much as is needed to have the proper clearance. Increases the life of the PTO.
  - Mower clogged. Remove material. If it is too wet, wait for grass or mud to dry.
  - Do not remove safety cover & safety equipment. If you want to remove or clean it, turn the tractor engine off first.
  - Keep hands, feet and clothing away from attachment when mower is running.
  - Do not use the mower to transport a load.
  - When the mower is running and working, stay at a safe distance from mower.

### **MOWING**

- ▶ Clear the mowing area of debris BEFORE mowing, especially objects that may be thrown and cause harm. Dry lawn cuts easier, requires less power and is likely to bunch and plug the mower. If the lawn is taller than about 8", consider mowing twice proper adjustments.
- ▶ Proper operating, service and adjustment is the key to machine performance and long life. Inspect frequently for loose bolts, proper belt tension, blade sharpness, ect.
- ▶ All hardware & guides in place and tight, especially that the blade bolts are tight.
- ▶ Lower mower and start the PTO. Lower to the ground and increase the PTO rpm.
- ▶ Move forward at slow speed. Inspect the work and consider marking mowing height adjustments by moving the washers on top of the wheels.
- ▶ For height adjustment, stop the PTO completely, cut off the engine, remove the lynch pins in the wheel
- ▶ Belt tension :
  - Maintain to be just tight enough to prevent slipping.
  - To adjust, turn bolt in front of the gearbox. Belts that too height will lead to premature failure and may cause a safety hazard.

### **GENERAL NORMS.**

- ▶ Before starting, running or servicing the machine, do not drink alcoholic beverages, take drugs or any other substances which may effect the operator or service person's ability.
- ▶ Do not operate the mower if all the safety requirements are not in place.
- ▶ Do not clean, lubricate, repair or adjust any components when the engine is running or the equipment is
- ▶ Wear work clothes or other comfortable apparel. Avoid baggy clothes or clothes with long sleeves to prevent being grabbed by turning or mowing components.

# **SAFETY DECALS**

## Safety Decal Locations

### Care of Safety Decals.

- ▶ Keep safety decals clean and free of obstructing material.
- ▶ Clean safety decals with soap and water and dry with a soft cloth.
- ▶ Replace damaged or missing safety decals with new decals from your LS Mtron Dealer.
- ▶ If a component with a safety decal(s) affixed is replaced with a new part, make sure new safety decal(s) are attached in the same location(s) as the replaced components.
- ▶ Mount new safety decals by applying on a clean dry surface and pressing air bubbles to outside edges.



3101E-00111



3102E-00018



3102E-00006



3102E-00022



3102E-00019



3102E-00013



3102E-00020

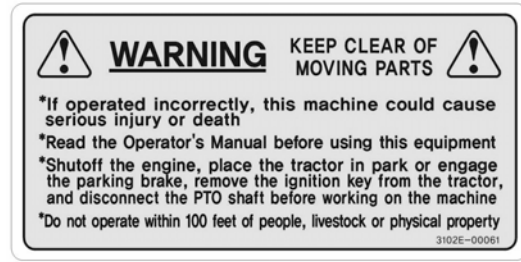


3102E-00063

# **SAFETY DECALS**



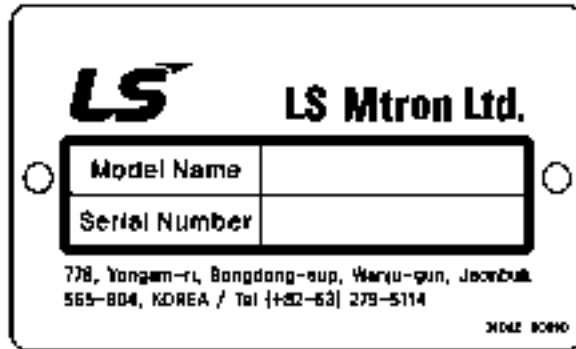
3102E-00021



3102E-00061

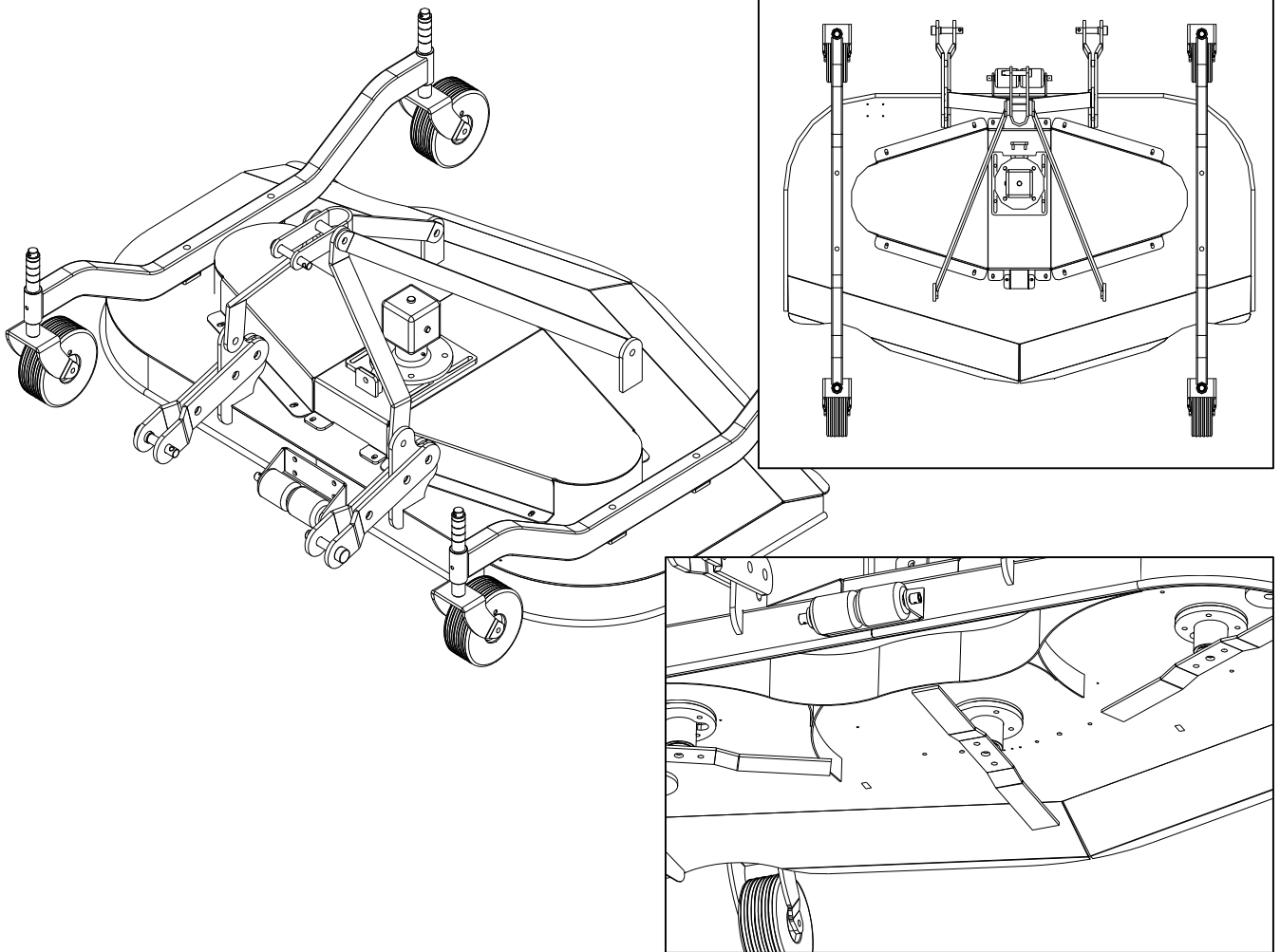
# **GREASE**

3102E-00062



3104E-00010

# **MOWER SPECIFICATION**



Mower Model	KTFM-84S
Cutting width	84"
Overall Width	86"
Discharge	Rear discharge
Weight, Machine	728 Lbs
Max. PTO-hp	Not to exceed 60 HP
Min. PTO-hp	25hp
Cutting Height	3/4" – 4 3/4"
Deck Material	3/8"
Blades Sizes	2 3/8" x 1/4" x 28 3/4"
Blade Overlap	1 3/16"
Blade RPM	2,160
Hitch	Cat-1



# **INTRODUCTION**

The purpose of this manual is to assist you in maintaining and operating your Mower. Read it carefully, it furnishes information and instructions that will help you achieve years of dependable performance.

Some information may be general in nature due to unknown and varying conditions. However, through experience and these instructions, you should be able to develop operating procedures suitable to your particular situation.

"Right" and "Left" as used throughout this manual are determined by facing the direction the machine will travel when in use.

The photos, illustrations and data used in this manual are current at the time of printing, but due to possible in-line production changes, your machine may vary slightly in detail. The manufacturer reserves the right to redesign the machine as may be necessary without

## **► Important**

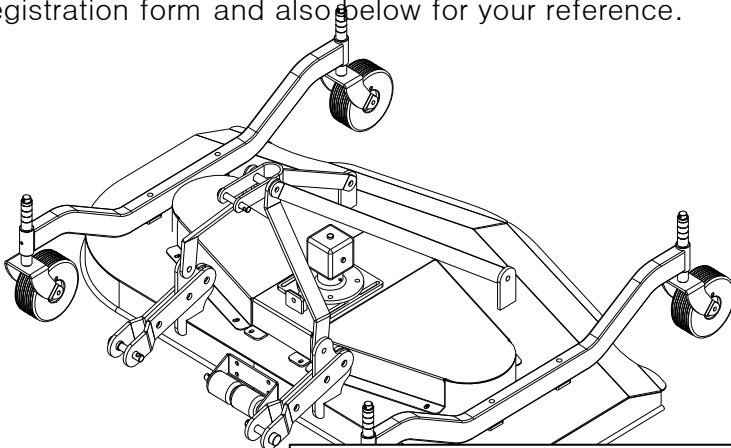
Illustrations used in this manual may not show all safety equipment that is recommended to ensure safe operation of tractor and Mower. Refer to the Safety Precautions section of this manual for information concerning safety. consult your dealer for further information.

## **► Warranty Registration**

The Delivery and Warranty Registration forms must be filled out and signed to validate your warranty protection. The items on the form under "I hereby Acknowledge" should be read and understood. The terms and conditions of the warranty on this machine are specified in the front

## **► Serial Number and Location**

The serial number is important information about the machine and it may be necessary to know it before obtaining the correct replacement part. The serial number plate is located on the LH(left hand) inside of front area of boom. The serial number should be recorded on the Delivery and Registration form and also below for your reference.



### **Finish mower Serial Number Information**

FINISH MOWER SERIAL NUMBER \_\_\_\_\_

DATE PURCHASED \_\_\_\_\_

DEALER NAME \_\_\_\_\_

AND TELEPHONE NUMBER \_\_\_\_\_

# **LUBRICATION AND MAINTENANCE**



## **CAUTION**

- Do not perform and service or maintenance Operations with mower raised off the ground.

### **► Important**

Lower the mower to the ground to performing any service or maintenance operations on the tractor.



## **WARNING**

- Do not operate the Mower if the fittings are leaking or if the hoses are damaged.  
A sudden line burst could cause the mower to drop suddenly, causing damage to the tractor or Mower or injury to personnel.
- Operate the Mower from the tractor seat only.
- Do not stand under a raised Mower.  
Accidental movement of control lever or leak in hydraulic system could cause mower to drop, causing severe injury.

**Check the tractor hydraulic system as outlined in the Tractor Operator's Manual.**

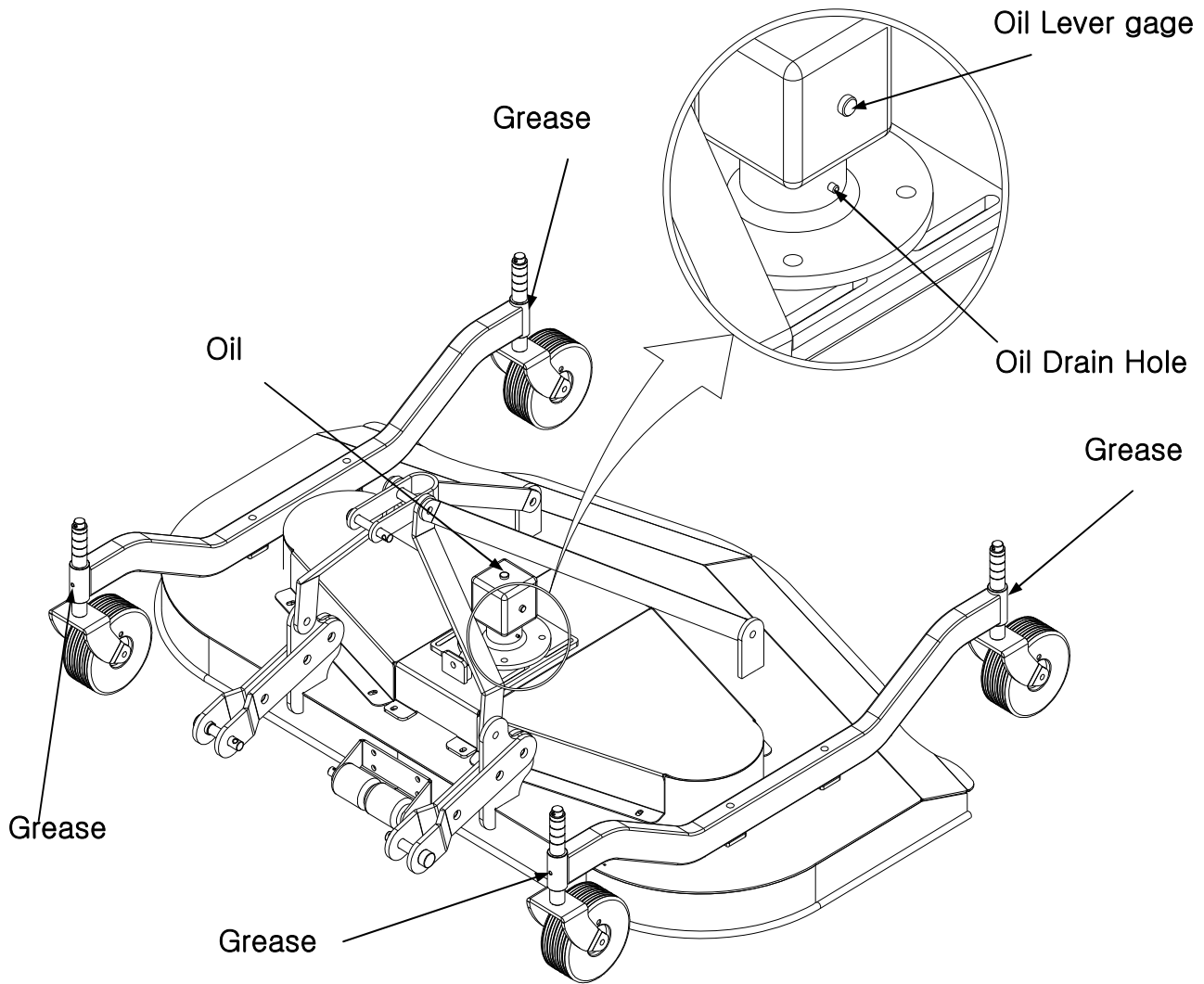
## **※NOTE**

- When checking Gear box oil level, the mower should be on the ground horizontaly.
- Grease all "GREASE" points daily(10 hours). Refer to Tractor Operator's Manual for lubricant recommendations.

## **Gear box Oil**

- After the first 50 working hours and, later, every 800 working hours, replace the oil in the gear box.  
Use oil SAE EP 80W90

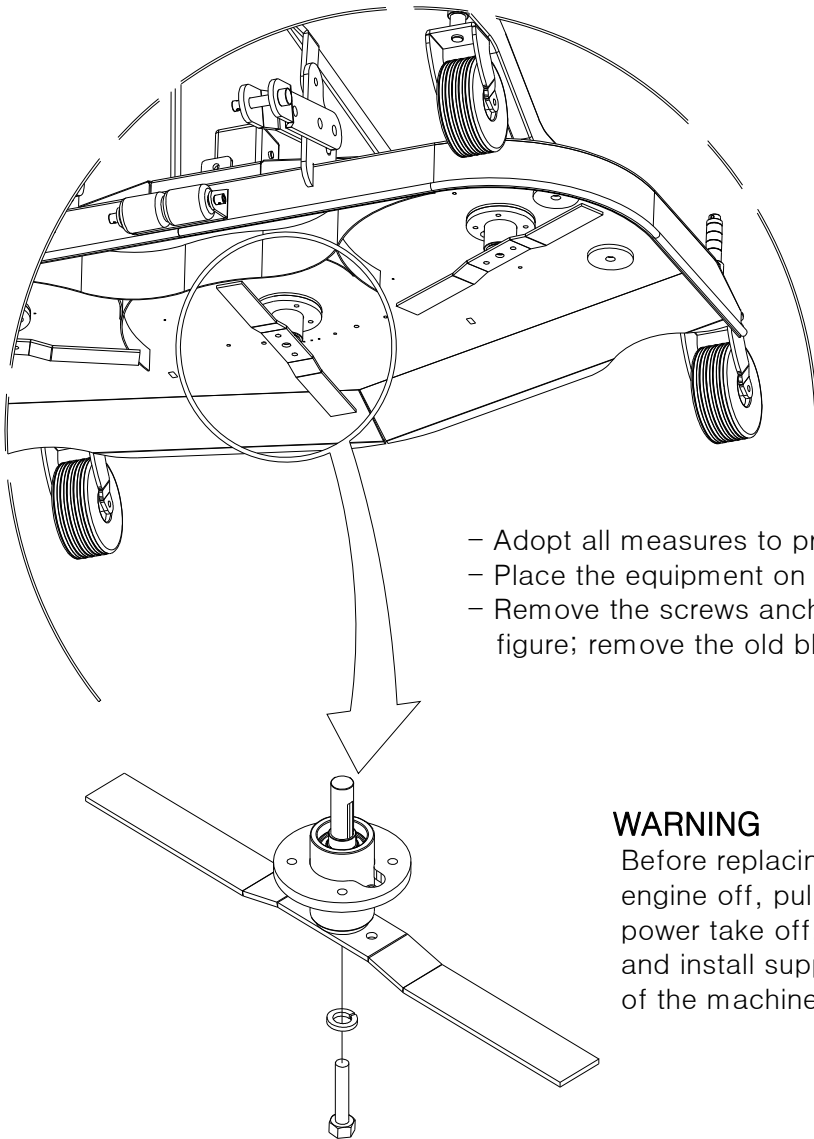
# **LUBRICATION AND MAINTENANCE**



ITEM	SERVICE	SERVICE INTERVAL
Gear box Oil Level	Check	Daily/10 hours
Gear box Oil	Lubricate	Daily/10 hours
Pulley Ass'y	Lubricate	Daily/10 hours
Tire hinge	Check	Daily/10 hours
Belt tension	Check	Daily/10 hours
All the hardwares	Check visually and Re-Torque	Daily/10 hours

# **BLADE REPLACEMENT**

For proper mower operation, frequently check the lawn mower blades: make sure that they are sharp and perfectly anchored by means of the bolts. Follow the procedure below to replace the blades.



- Adopt all measures to prevent accidental machine start up.
- Place the equipment on sturdy supports.
- Remove the screws anchoring the blades as shown in figure; remove the old blades and install the new ones.

## **WARNING**

Before replacing the blades, turn the tractor engine off, pull the parking brake, disengage the power take off, raise the mower using the tractor lift, and install supports to prevent accidental dropping of the machine.

# **SPARE PARTS**

Always use original LS Mtron spare parts for the best lawn mower performance.

For spare parts requests please refer to the Part Illustrations.

The spare parts can be ordered from your LS Mtron dealer. The following data must always be specified:

- Equipment type and width.
- Part number of the requested component.
- Description of the part and requested quantity.
- Requested type of transport. Should this information not be provided, your LS Mtron dealer shall not be responsible for delays caused by circumstances beyond their control. The owner shall be responsible for any transport charges.

# TORQUE TIGHTENING CHART

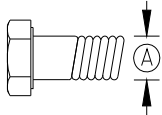
## MINIMUM HARDWARE TIGHTENING TORQUES IN FOOT POUNDS (NEWTON-METERS) FOR NORMAL ASSEMBLY APPLICATIONS

Always tighten hardware to these values unless a different torque value or tightening procedure is listed for a specific application.

Fasteners must always be replaced with the same grade as specified in the manual parts list.

Always use the proper tool for tightening hardware : SAE or SAE hardware and Metric for metric hardware. Make sure fastener threads are clean and you start thread engagement properly.

### INCH HARDWARE



SAE SERIES  
TORQUE  
CHART



SAE Bolt Head  
Identification  
SAE Grade 2  
(No Dashes)



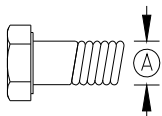
SAE Grade 5  
(3 Radial Dashes)



SAE Grade 8  
(6 radial Dashes)

Diameter (Inches)	Wrench Size	MARKING ON HEAD					
		SAE 2		SAE 5		SAE 8	
		lbs-ft	N-m	lbs-ft	N-m	lbs-ft	N-m
1/4"	7/16"	6	8	10	13	14	18
5/16"	1/2"	12	17	19	26	27	37
3/8"	9/16"	23	31	35	47	49	67
7/16"	5/8"	36	48	55	75	78	106
1/2"	3/4"	55	75	85	115	120	163
9/16"	13/16"	78	106	121	164	171	232
5/8"	15/16"	110	149	170	230	240	325
3/4"	1-1/8"	192	261	297	403	420	569
7/8"	1-5/16"	306	416	474	642	669	907
1"	1-1/2"	467	634	722	979	1020	1383

### METRIC HARDWARE



METRIC SERIES  
TORQUE  
CHART



Metric Bolt Head  
Identification  
Metric  
Grade 8.8



Metric Grade 10.9

Diameter & Thread Pitch (Millimeters)	Wrench Size	COARSE THREAD				FINE THREAD				Diameter & Thread Pitch (Millimeters)
		MARKING ON HEAD				MARKING ON HEAD				
		Metric 8.8		Metric 10.9		Metric 8.8		Metric 10.9		
		N-m	lbs-ft	N-m	lbs-ft	N-m	lbs-ft	N-m	lbs-ft	
6 x 1.0	10mm	8	6	11	8	8	6	11	8	6 x 1.0
8 x 1.25	13mm	20	15	27	20	21	16	29	22	8 x 1.0
10 x 1.5	16mm	39	29	54	40	41	30	57	42	10 x 1.25
12 x 1.75	18mm	68	50	94	70	75	55	103	76	12 x 1.25
14 x 2.0	21mm	109	80	151	111	116	87	163	120	14 x 1.5
16 x 2.0	24mm	169	125	234	173	181	133	250	184	16 x 1.5
18 x 2.5	27mm	234	172	323	239	263	194	363	268	18 x 1.5
20 x 2.5	30mm	330	244	457	337	367	270	507	374	20 x 1.5
22 x 2.5	34mm	451	332	623	460	495	365	684	505	22 x 1.5
24 x 3.0	36mm	571	421	790	583	623	459	861	635	24 x 2.0
30 x 3.0	46mm	1175	867	1626	1199	1258	928	1740	1283	30 x 2.0

# **PART ILLUSTRATIONS**

## GENERAL INFORMATION

### Illustrations

The individual parts in their normal relationship to each other. Reference numbers are used in the illustrations. These numbers correspond to those in the "Number" column and are followed by the quantity required and description.

### Directional Reference

"Right hand" and "left hand" sides are determined by standing at the rear of the unit and facing in the direction of forward travel.

### Part Order

Orders must give the complete description, correct part number, the total amount required, the product model, all the necessary serial numbers, the method of shipment and the shipping address.

### Instructions

#### ▶ GROUP NAME

: Detail classification name for parts.

#### ▶ SECTION NAME

: Classification name for parts.

#### ▶ COMPONENTS




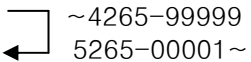
: The components of an assembly are identified by a bracket.

#### ▶ NO.

: Reference numbers are assigned to parts in the figure.

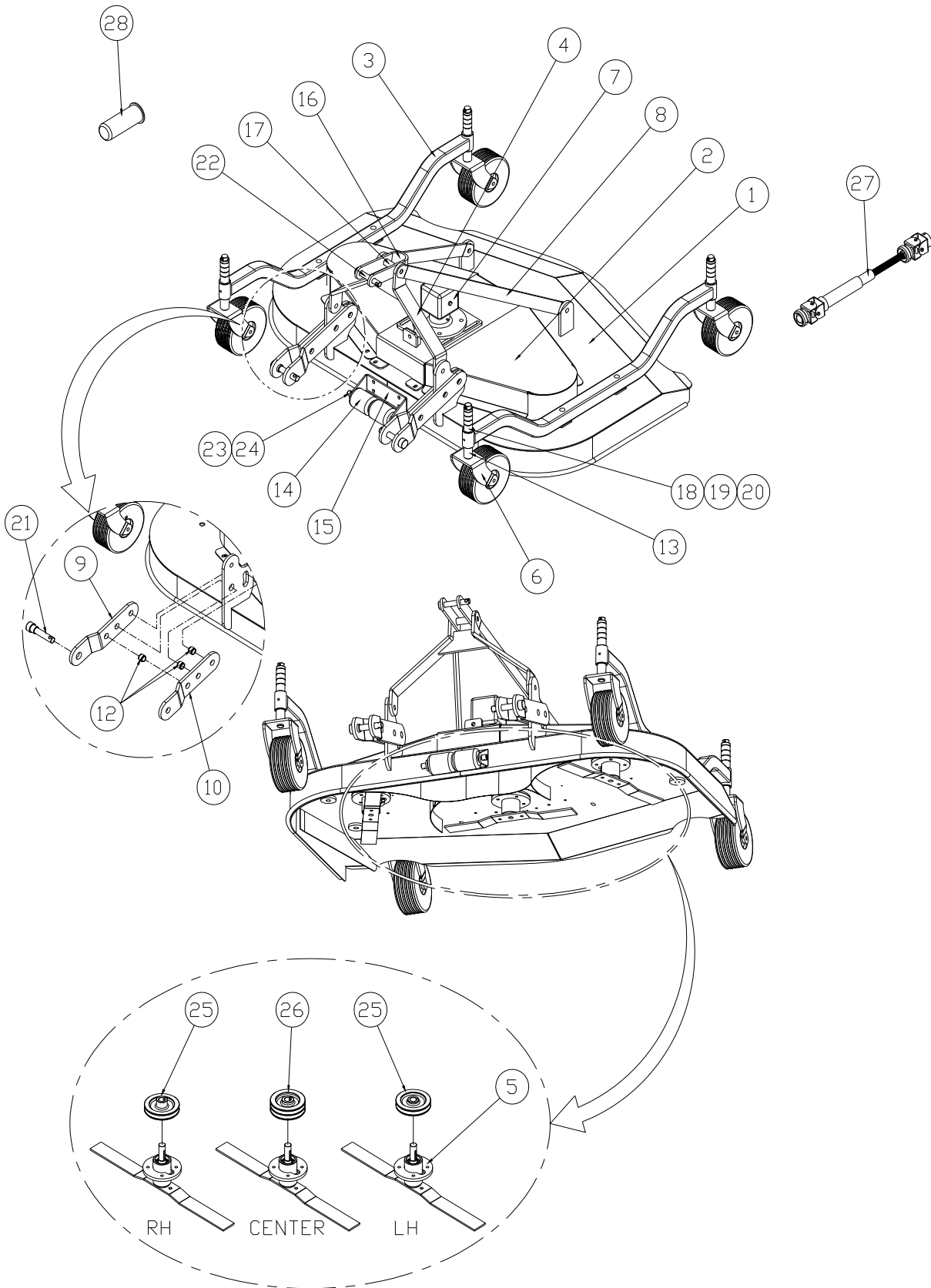
## INTERCHANGEABILITY

: Indicates the interchangeability of parts due to design change

	<p>Indicates that a new part can be used instead of an old part when you order this part, please order new part.</p>
	<p>indicates that either parts can be used.</p>
	<p>indicates that either parts can not be used.</p>
	<p>indicates that a part has a serial number break. When you order this part, please order a part according to the serial number of the Loader.</p>

★ Due to our policy of continuously improving products, The information contained herein is subject to change without notice

# **FINISH MOWER ASSEMBLY**

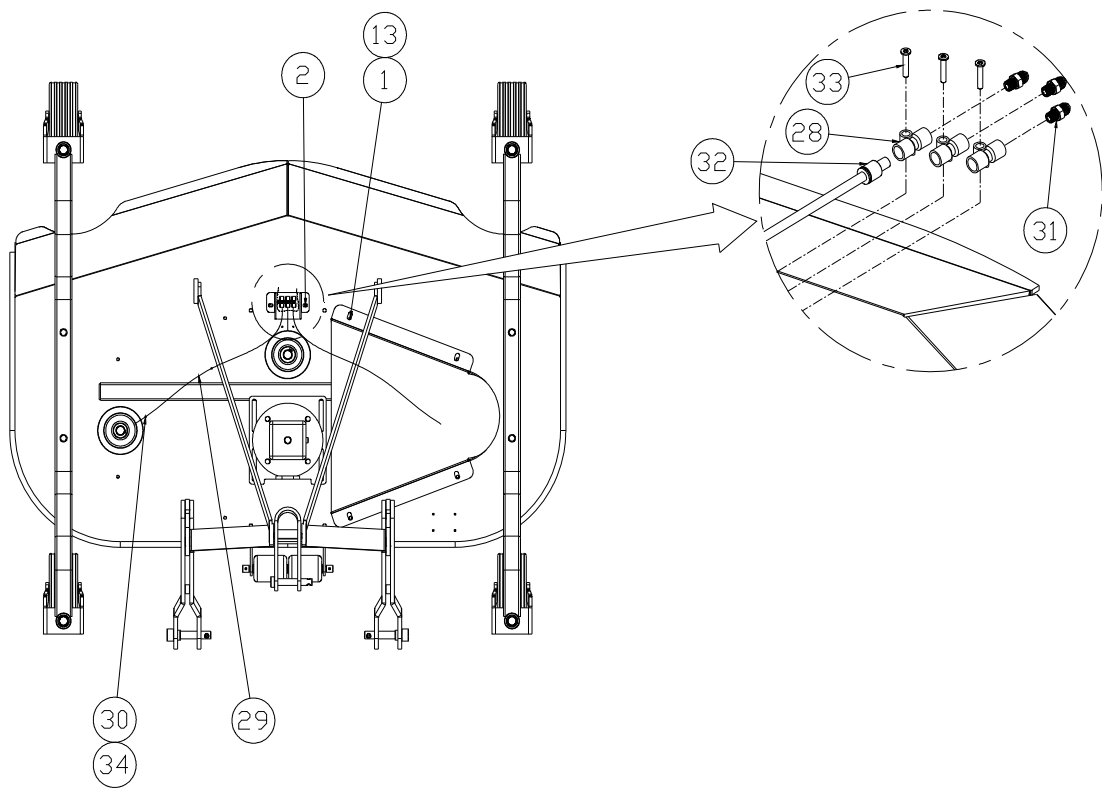
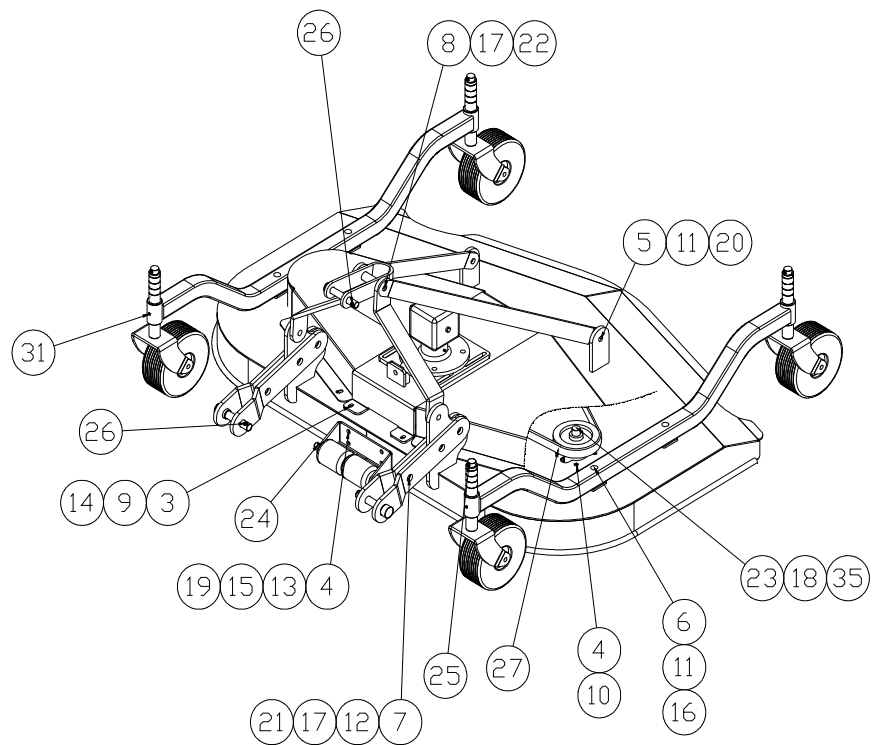




# FINISH MOWER ASSEMBLY

REF.NO	LS PART.NO	PART.NO	DESCRIPTION	QTY	I.C	SERIAL OR DATE
1	40284510	FMN84-00100-01	84" Main deck W.A.	1	☐	
2	40287447	FMN84-00200-02	84" Main cover W.A.	2	←	2013.02.22~
		FMN84-00200-01	84" Main cover W.A.	2		
3	40284512	FMN84-CP300 FMN84-00300	Tire frame W.A.	2		121114081~121114120
4	40284513	FMN84-00400	Upper front arm W.A.	1		
5	40284514	FMN84-01000-02	Spindle Ass'y	3	☐	
	40287448	FMN84-01000-04	Spindle Ass'y	3	←	2013.02.22~
6	40284516	FMN84-02000	Wheel Ass'y	4	☐	
	40287450	FMN84-02000-01	Wheel Ass'y	4	←	2013.02.22~
7	40284517	FMN84-03000-02	Gear box Ass'y	1	☐	
	40287452	FMN84-03000-04	Gear box Ass'y	1	←	2013.02.22~
8	40284504	FMN84-00001	Upper rear arm	2		
9	40284505	FMN84-00002	Low arm L/H	2		
10	40284506	FMN84-00003	Low arm R/H	2		
11	40284507	FMN84-00004	Grease terminal cover	1		
12	40284508	FMN84-00005	Low arm boss, ø25	6		
13	40284549	FMT84-02002	boss, ø34	4		
14	40255447	TM430-Z0001	Roller	2		
15	40284532	FMT84-00004-01	Roller bracket	1		
16	40284509	FMN84-00007	Top link	1		
17	40284534	FMT84-00007	Top link boss	1		
18	40284535	FMT84-00008	Height boss 30	4		
19	40284536	FMT84-00009	Height boss 20	12		
20	40284537	FMT84-00010	Height boss 10	4		
21	40284538	FMT84-00011-01	Low hitch pin	2		
22	40284539	FMT84-00012	Top link pin	1		
23	40284540	FMT84-00013	Roller shaft	1		
24	40284541	FMT84-00014	Roller shaft socket	2		
25	40284542	FMT84-00015-01	Single pulley	2	☐	
	40287454	FMT84-00015-02	Single pulley	2	←	2013.02.22~
26	40284543	FMT84-00016-01	Double pulley	1	☐	
	40287455	FMT84-00016-02	Double pulley	1	←	2013.02.22~
27	40284545	FMT84-00018	Drive shaft	1		
28	40284522	FMNCD-00001	PTO Cap	1		

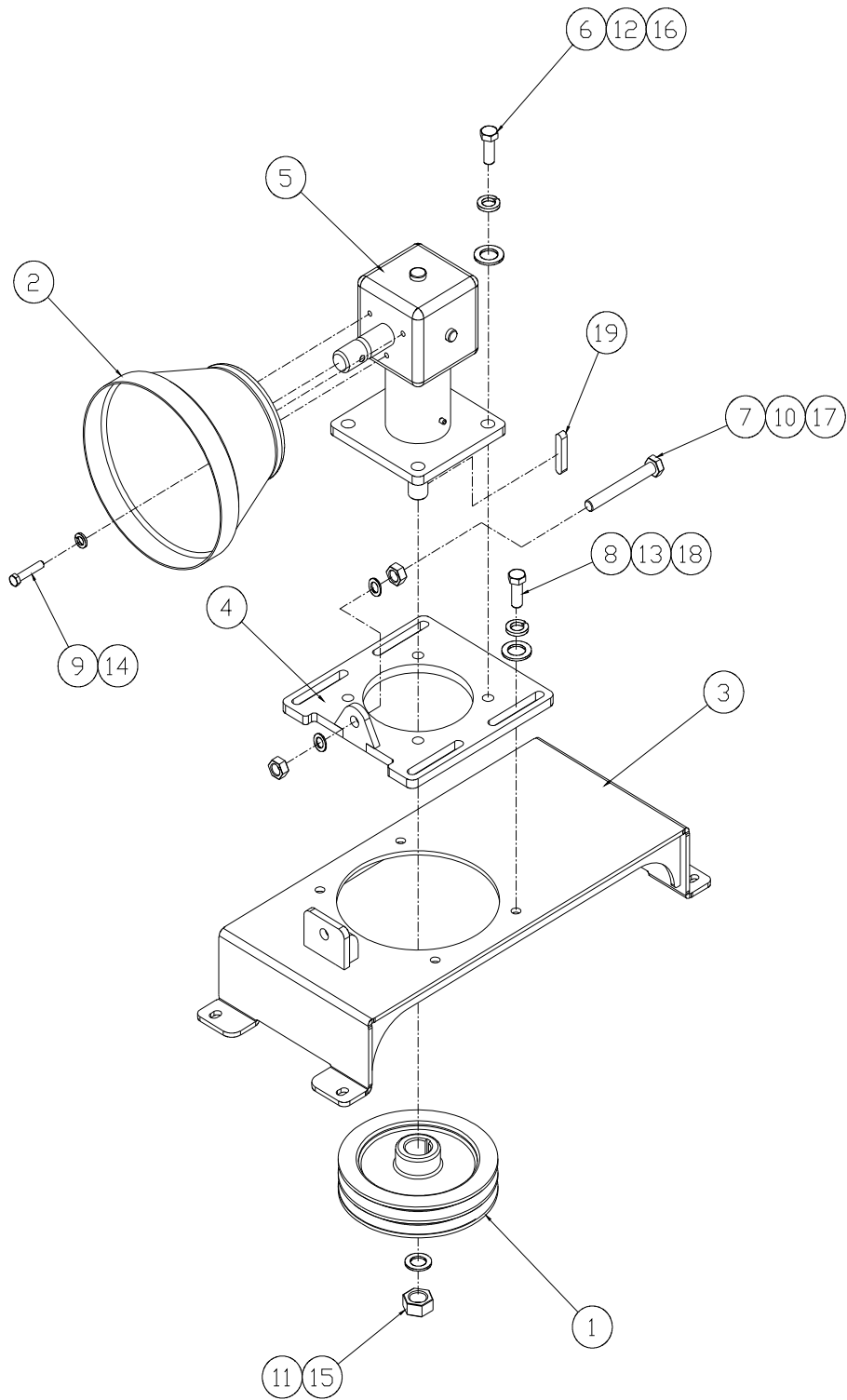
# FINISH MOWER ASSEMBLY



# FINISH MOWER ASSEMBLY

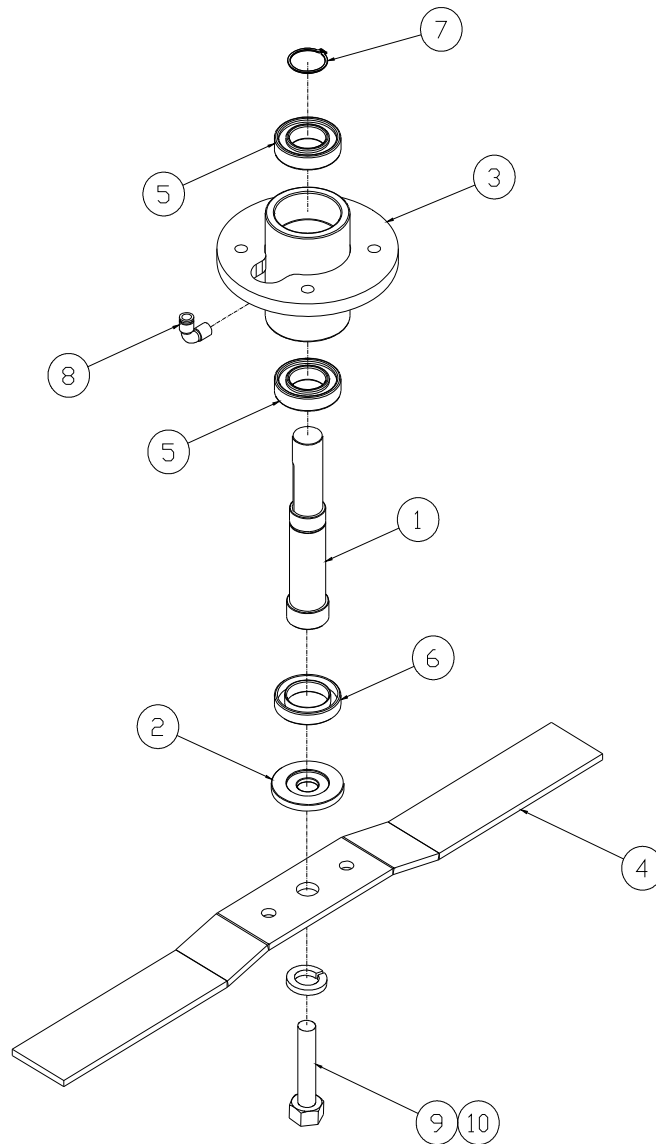
REF.NO	LS PART.NO	PART.NO	DESCRIPTION	QTY	I.C	SERIAL OR DATE
1	40248354	1012N-M0803-20	Wing screw, M8-P1.25-20L	8		
2	40230889	1012S-M0803-25	Sem's Bolt-HT, M8-1.25-25L	2		
3	40283967	10191-M1004-25	Hex. Bolt-HT, M10-P1.5-25L	4		
4	40230892	10191-M1205-30	Hex. Bolt-HT, M12-P1.75-30L	16		
5	40283970	10191-M1606-45	Hex. Bolt-HT, M16-P2.0-45L	4		
6	40283971	10191-M1606-C0	Hex. Bolt-HT, M16-P2.0-120L	4		
7	40283972	10191-M1807-70	Hex. Bolt-HT, M18-P2.5-70L	6		
8	40283973	10191-M1807-G0	Hex. Bolt-HT, M18-P2.5-160L	1		
9	40228641	10316-M1000	Washer-Spring, M10	4		
10	40228642	10316-M1200	Washer-Spring, M12	16		
11	40228644	10316-M1600	Washer-Spring, M16	8		
12	40230613	10316-M1800	Washer-Spring, M18	6		
13	40228646	10321-M0800	Washer-Plain, M8	8		
14	40228647	10321-M1000	Washer-Plain, M10	4		
15	40228648	10321-M1200	Washer-Plain, M12	8		
16	40228650	10321-M1600	Washer-Plain, M16	4		
17	40283976	10321-M1800	Washer-Plain, M18	14		
18	40284257	10321-M2500	Washer-Plain, M25	3		
19	40228635	1021N-M1205	Nut-Self Locking, M12-P1.75	4		
20	40228638	10261-M1606	Hex. Nut, M16-P2.0	4		
21	40283975	10261-M1807	Hex. Nut, M18-P2.5	6		
22	40283974	1021N-M1807	Nut-Self Locking, M18-P2.5	1		
23	40230611	1021N-M2404	Nut-Self Locking, M24-P1.5	3		
24	40255422	14041-03040	Cotter pin, ø3-40L	2		
25	40255421	14021-06000	Pin-Ring, ø6	4		
26	40283977	14051-10070	Pin-Ring, ø10	3		
27	40284529	FMT0Z-0B084	V-Belt, B-Type 84"	2		
28	40284524	FMT0Z-00003	Grease terminal, PT 1/8"	3		
29	40284525	FMT0Z-00004	Hose-grease, 1/8" 1.8m	1		
30	40284526	FMT0Z-00005	Hose tie	6		
31	40228707	802G0-T1900	Nipple-Grease, PT 1/8"	7		
32	40283988	802G0-T1901-00	Nipple-Grease, PT 1/8"	3		
33	40283964	1012P-00400-25	Screw, ø4.2-25L	3		
34	40283963	1012P-00400-07	Screw, ø4.2-7L	6		
35	40284544	FMT84-00017	Key	3		

# **GEAR BOX ASSEMBLY**



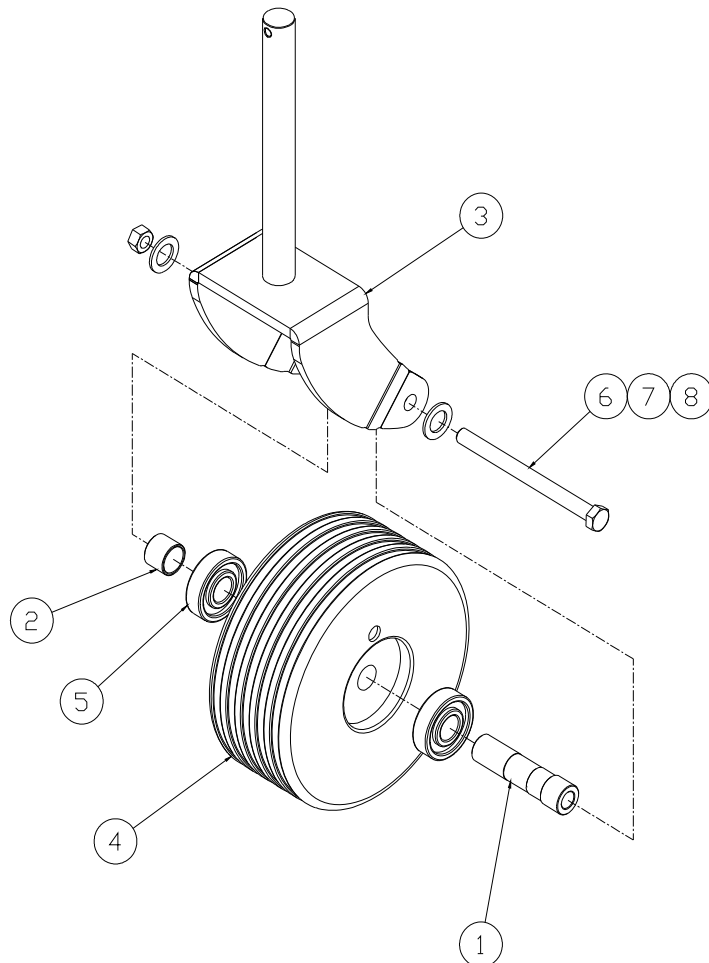


# **BLADE ASSEMBLY**



REF.NO	LS PART.NO	PART.NO	DESCRIPTION	QTY	I.C	SERIAL OR DATE
1	40284546	FMT84-01001-01	Spindle shaft	1	□	
	40287457	FMT84-01001-02	Spindle shaft	1	←	2013.02.22~
2	40284547	FMT84-01002	Bearing housing cover	1		
3	40284515	FMN84-01002-01	Bearing housing	1	□	
	40287449	FMN84-01002-02	Bearing housing	1	←	2013.02.22~
4	40284531	FMT84-00001-01	84" Blade	1		
5	40283990	81112-30062-16	Bearing, 6206ZZ	2		
6	40283991	81210-35062-10	Oil seal, TC 35-62-10	1		
7	40255418	1301C-03000	Snap ring, STW30	1		
8	40283989	802G0-T1901-03	Nipple-Grease, 1/8" 90°	1		
9	40255413	1019N-M1804-50	Hex. Bolt-HT, M18-P1.5-50L	1		
10	40230613	10316-M1800	Washer-Spring, M18	1		

# WHEEL ASSEMBLY



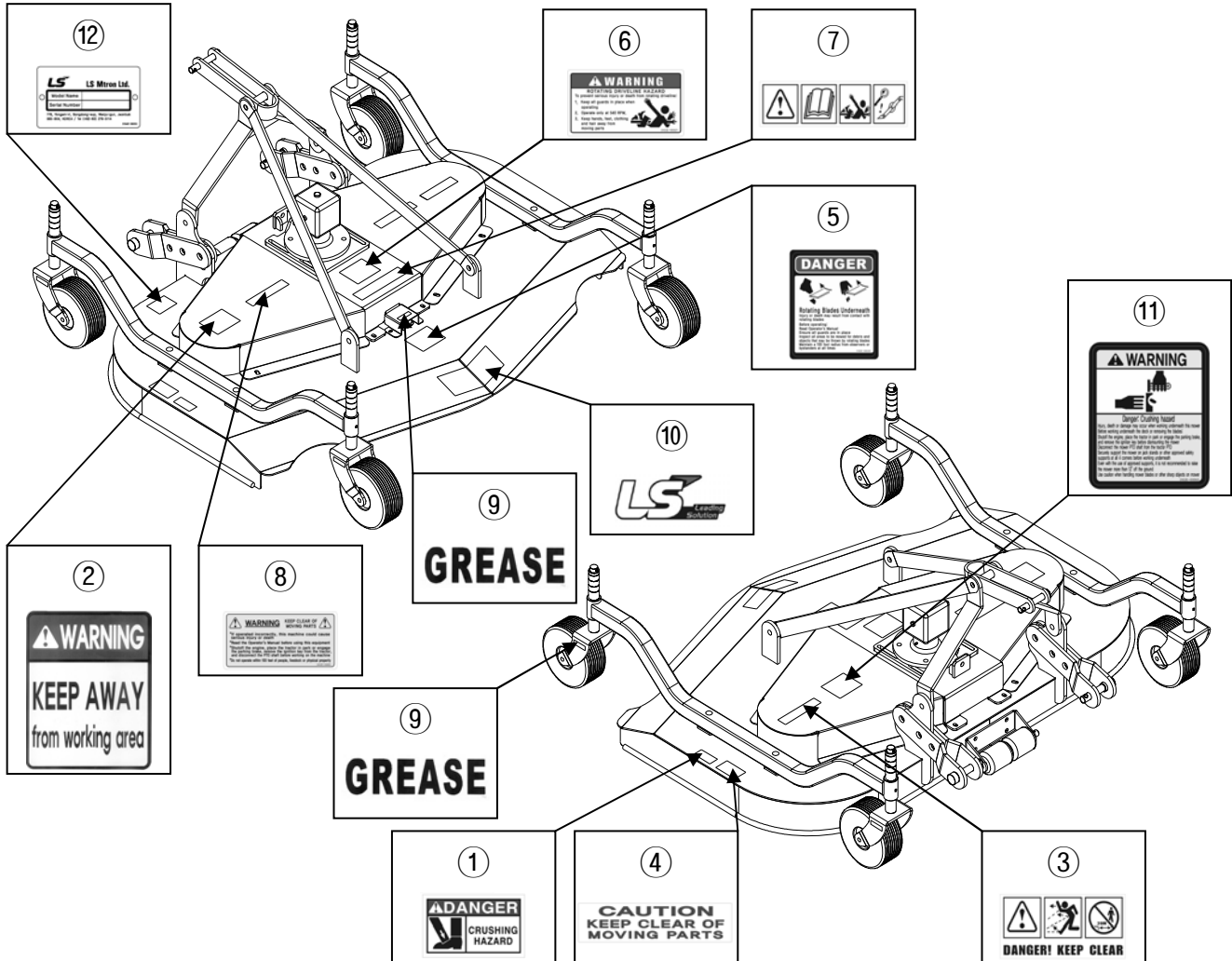
REF.NO	LS PART.NO	PART.NO	DESCRIPTION	QTY	I.C	SERIAL OR DATE
1	40283979	14512-11087-01	Wheel boss	1	<input type="checkbox"/>	
	40287422	14512-11087-02	Wheel boss	1	<input checked="" type="checkbox"/>	2013.02.22~
2	40284548	FMT84-02001	Wheel spacer	2	<input type="checkbox"/>	
	40287458	FMT84-02001-01	Wheel spacer	2	<input checked="" type="checkbox"/>	2013.02.22~
3	40283999	FMN60-02100	Wheel bracket W.A.	1		
4	40284551	TM430-Z5001	Wheel, FMW208	1		
5	40283987	6304ZZ	Bearing, 6304ZZ	2		
6	40283968	10191-M1205-00	Hex. Bolt-HT, M12-P1.75-130L	1		
7	40228648	10321-M1200	Washer-Plain, M12	2		
8	40228635	1021N-M1205	Nut-Self Locking, M12-P1.75	1		

# DECALS



## CAUTION :

Read and refer to the Tractor Operation Manual or Decals on the Tractor and Mower Decals on as shown.



Refer to category "Safety decals"

REF. NO	LS PART. NO	PART. NO	DESCRIPTION	QTY	I. C	SERIAL OR DATE
1	40255430	3102E-00006	DANGER DECAL	2		
2	40283980	3102E-00013	WARNING DECAL	1		
3	40283981	3102E-00018	DANGER KEEP CLEAR DECAL	1		
4	40255431	3102E-00019	CAUTION DECAL	2		
5	40255432	3102E-00020	DANGER DECAL	1		
6	40283982	3102E-00021	WARNING DECAL	1		
7	40283983	3102E-00022	DANGER DECAL	1		
8	40283984	3102E-00061	WARNING DECAL	1		
9	40283985	3102E-00062	GREASE DECAL	5		
10	40230646	3101E-00111	LS Mtron DECAL	1		
11	40283986	3102E-00063	WARNING DECAL	1		
12	40230653	3104E-00010	NAME PLATE	1		



# MOWER SET-UP



CAUTION: See your Mower Operator's manual for Safety Precautions.

## STEP 1.

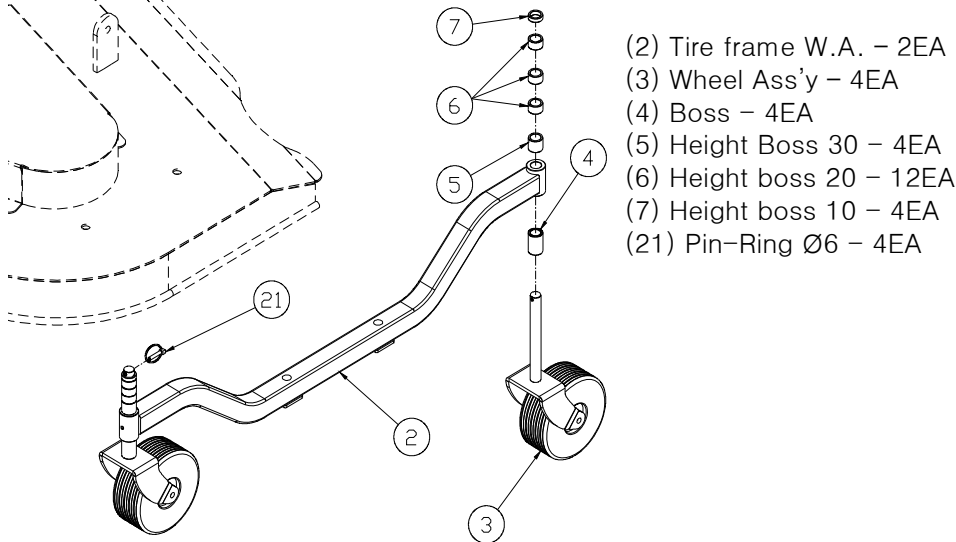
Position tractor on hard level surface.

## STEP 2.

Release mower, tire frame, mount kits and box from pallet.

## STEP 3.

Install Wheel Ass'y(3) to Tire frame W.A.(2) with height bosses(4, 5, 6) and Pin-Ring(21).



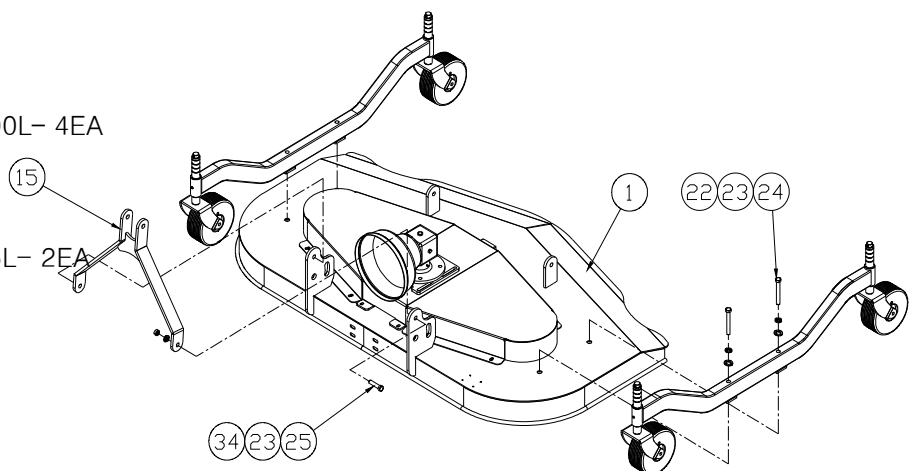
## STEP 4.

Install Tire frame W.A.(2) to Main deck(1) and secure with Bolts(22) and Washers(23, 24).

## STEP 5.

Install Upper front arm W.A.(15) to Main dack(1) and secure with Bolts(15), Washers(23) and Nuts(34).

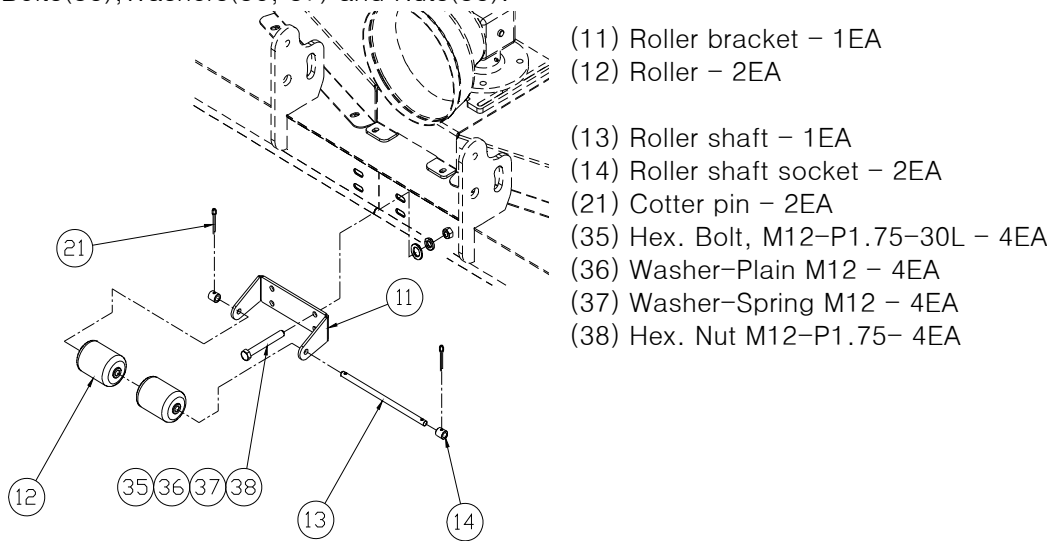
- (1) Main deck Ass'y - 1EA
- (15) Upper front arm W.A.- 1EA
- (22) Hex. Bolt-HT, M16-P2.0-100L- 4EA
- (23) Washer-Spring M16- 6EA
- (24) Washer-Plain M16- 4EA
- (25) Hex. Bolt-HT, M16-P2.0-45L- 2EA
- (34) Hex. Nut, M18-P2.0- 2EA



# **MOWER SET-UP**

## **STEP 6.**

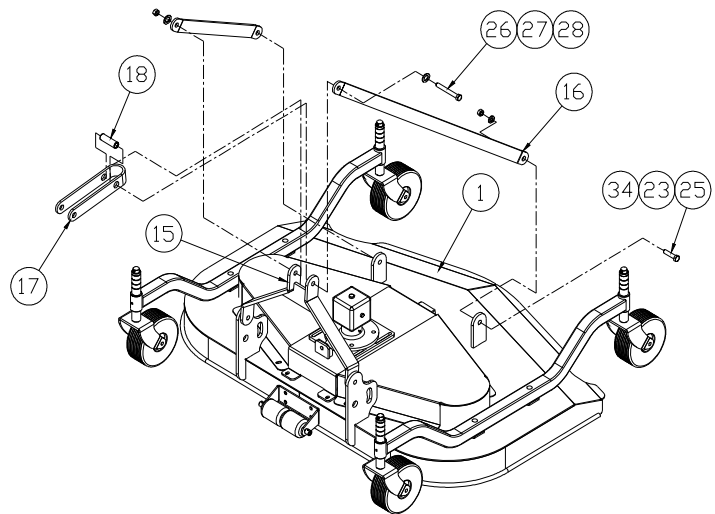
Install Roller bracket(11), Roller shaft(13), Roller shaft sockets(14), Cotter pin(21) and Rollers(12). Secure with Bolts(35), Washers(36, 37) and Nuts(38).



## **STEP 7.**

Install Upper rear arm(16) to Main deck(1) and install Top link(17) and Top link boss(18) to Upper arms(15, 16). Secure with Bolts(25, 26), Washers(23, 27) and Nuts(28, 34).

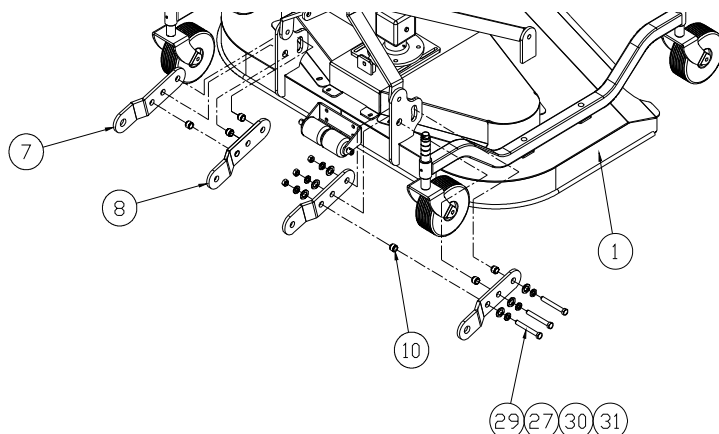
- (17) Top link– 1EA
- (18) Top link boss– 1EA
- (23) Washer-Spring M16 – 2EA
- (25) Hex. Bolt-HT, M16-P2.0-45L – 2EA
- (26) Hex. Bolt-HT, M18-P2.5-160L – 1EA
- (27) Washer-Plain M18 – 2EA
- (28) Hex. Nut-Self locking M18-P2.5- 1EA
- (34) Hex. Nut, M16-P2.0 – 2EA



## **STEP 8.**

Install Low arm outer (7), Low arm inner (8) and Low arm boss (10) to Main deck (1) and secure with Bolts(29), Washers(27, 30) and Nuts(31)

- (7) Low arm L/H – 2EA
- (8) Low arm R/H – 2EA
- (10) Low arm boss – 6EA
- (21) Pin-Ring – 2EA
- (27) Washer-Plain M18 – 2EA
- (29) Hex. Bolt-HT, M18-P2.5-70L – 6EA
- (30) Washer-Spring M18 – 6EA
- (31) Hex. Nut, M18-P2.5 – 6EA

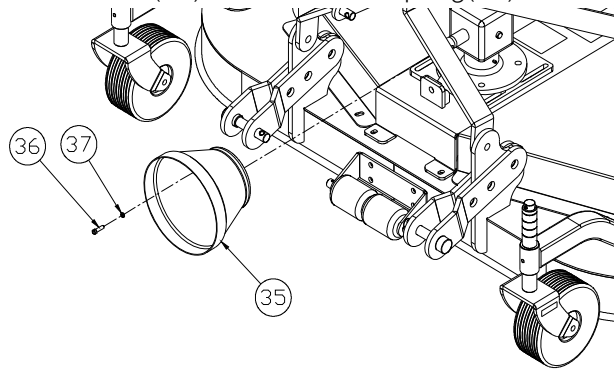


# **MOWER SET-UP**

## **STEP 9.**

Install Drive shaft cover(35) and secure with Wrench bolts(36) and Washers-Spring(37).

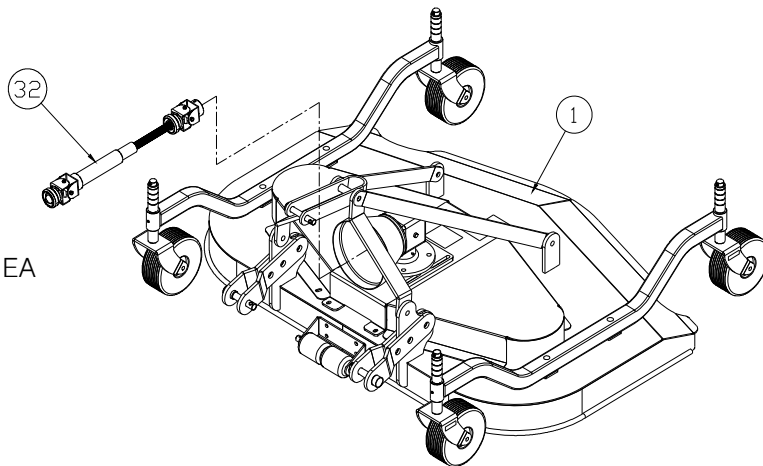
- (35) Drive shaft cover- 1EA
- (36) Wrench Bolt, M8-P1.26-15L - 4EA
- (37) Washer-Spring(Black) M8 - 4EA



## **STEP 10.**

Install Drive shaft(32) to spline shaft on Main deck(1).

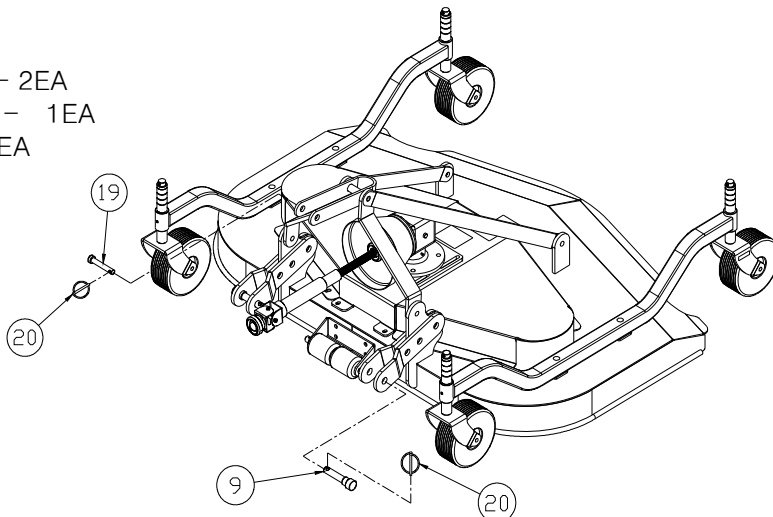
- (40) Drive shaft - 1EA



## **STEP 11.**

Fit the Mower to 3-point hitch of tractor with Low arm pins(9), Top link pin(19) and Pins-Ring(20).

- (9) Low arm pins - 2EA
- (19) Top link pin - 1EA
- (20) Pins-Ring - 3EA



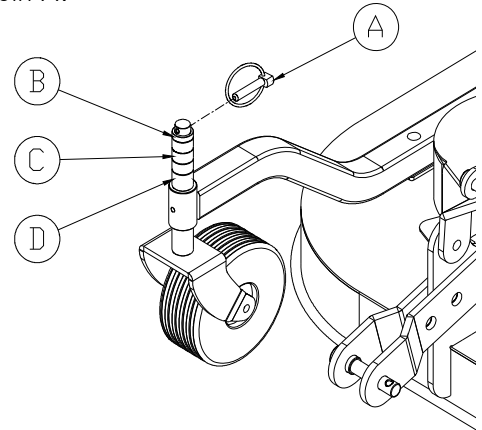
# **MOWER SET-UP**

## **CUTTING HEIGHT ADJUSTMENT**

The cutting height of the equipment depends on the position of the wheels.

If the wheels are raised, the cutting height increases; if the wheels are lowered, the cutting height decreases. Make sure that the wheels are set at the same height on both sides.

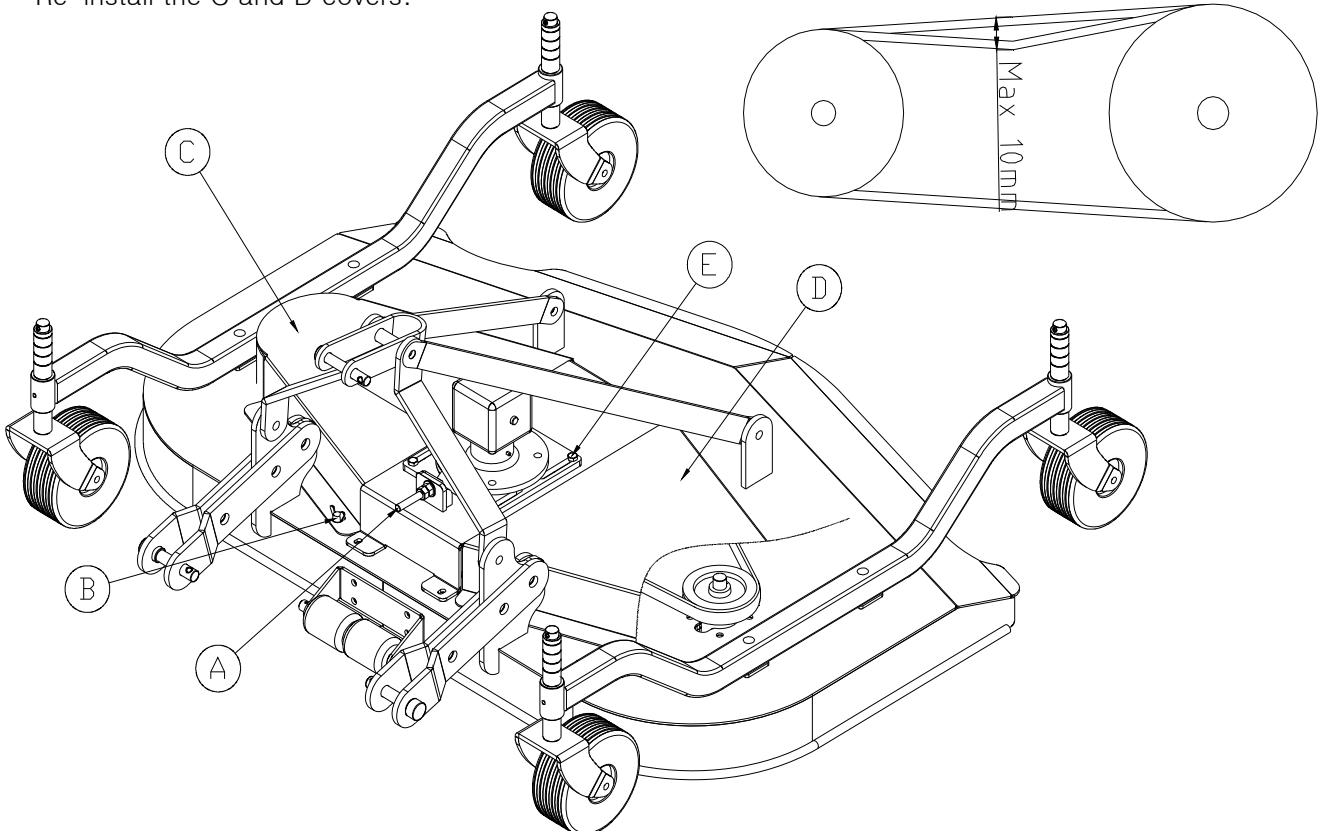
To adjust the cutting height on the mowers loosen and remove pin A and adjust the wheel height according to the bushing B, C, D. When adjustment is completed, reinsert the pin A.



## **BELTS ADJUSTMENT**

In the LS Mtron mowers it is possible to adjust the tension of the belt; the right belts tensioning insures that the machine works in the right way and decreases the wear of rotating parts. To adjust the belts tension:

- Unscrew the Wing screw B and remove cover RH/LH C and D.
- Loosen the Bolts E, screw or Unscrew the Nut A to adjust the tension of the belts; if turn the screw in clockwise direction the belts are tensioned, while turning it counterclockwise they are loosened; when the belt is correctly tensioned it can be lowered in the middle part not more than 10mm.
- Re-torque the bolts E according to the torque tightening chart (Page. 14)
- Re-install the C and D covers.



# **MOWER SET-UP**

## **START UP**

After carrying out mower, the equipment is ready for use.

Start the engine, engage the PTO, and ensure correct operation of mower before continuing.

## **SHUT DOWN**

The following activities are recommended if the tiller will not be used for a long period of time:

- Clean and dry the equipment.
- Inspect the equipment and replace the damaged or worn parts if necessary.
- Tighten all hardwares, according to the torque tightening chart (Page. 14)

Lubricate and cover the machine with a tarpaulin and store it in a dry place.